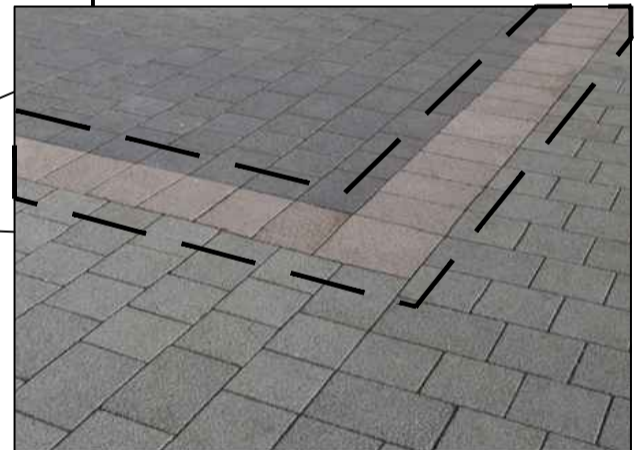
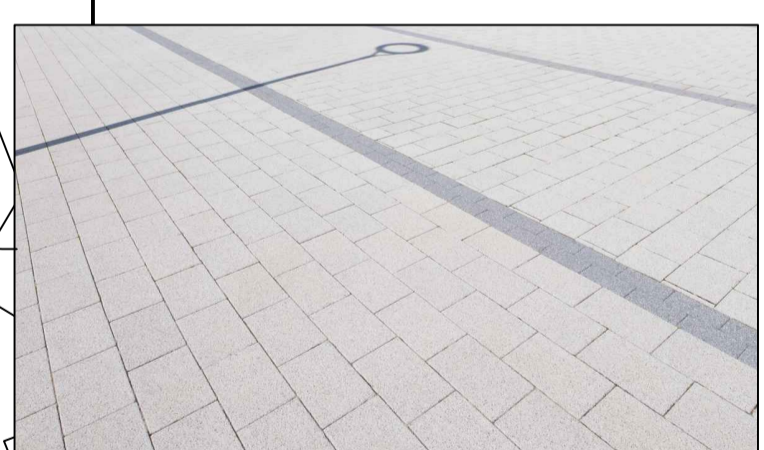


Country kerb PCC granite aggregate kerb (125x255x915mm) (Tobermore or equal approved)



Fusion granite textured PCC blocks (300x300x60mm); Rose finish (Tobermore or equal approved)



Fusion granite textured PCC blocks (600x300x60mm); Silver finish with Graphite trim (Tobermore or equal approved)



City-pave Vs5 granite blocks to parking bays (150x100x100mm); 75% dark grey - 25% mid grey (Tobermore or equal approved)



City-pave Vs5 granite aggregate blocks (150x100x100mm); dark grey & sandstone to crossing (Tobermore or equal approved)



Escofet Carmel tree grille 1200mm² (Marshalls or equal approved)

PRELIMINARY

Rev	Amendment	Date
HARTLEPOOL BOROUGH COUNCIL		
REGENERATION AND NEIGHBOURHOODS DEPARTMENT		
DIRECTOR: Denise Ogden		
NEIGHBOURHOODS DIVISION		
Colin Bolton Building Design & Construction Manager Hartlepool TS24 8AY TEL: 01429 266522 FAX: 01429 523899		
Client		
Project		
Church Street & Church Square Improvements Schemes		
Title		
Church Street Draft masterplan Sheet 1 Tower Street - Church Square Link		
Drawn SW	Scale 1:150 at A1	Date March 2016
Drawing No. 300/75F L009		Rev.
DWG. LAST UPDATED		DATE: 02/06/2016
		TIME: 11:02

THE CONTRACTOR IS RESPONSIBLE FOR CHECKING ALL DIMENSIONS AND DETAILS ON SITE PRIOR TO ERECTION, MANUFACTURE AND INSTALLATION. WHERE PCC TYPES ARE SPECIFIED BY PROPRIETARY NAME AND THE PHRASE 'OR EQUAL APPROVED' IS NOT INCLUDED, IT IS DEEMED TO BE INCLUDED.

© HARTLEPOOL BOROUGH COUNCIL 2014. REPRODUCED FROM THE ORDNANCE SURVEY MAP WITH THE PERMISSION OF THE CONTROLLER OF HER MAJESTY'S STATIONERY OFFICE © CROWN COPYRIGHT RESERVED LICENCE No. LA09057. ALL TIMBER AND WOOD-DERIVED PRODUCTS SHOULD BE PURCHASED FROM INDEPENDENTLY VERIFIABLE, LEGAL AND SUSTAINABLE SOURCES.