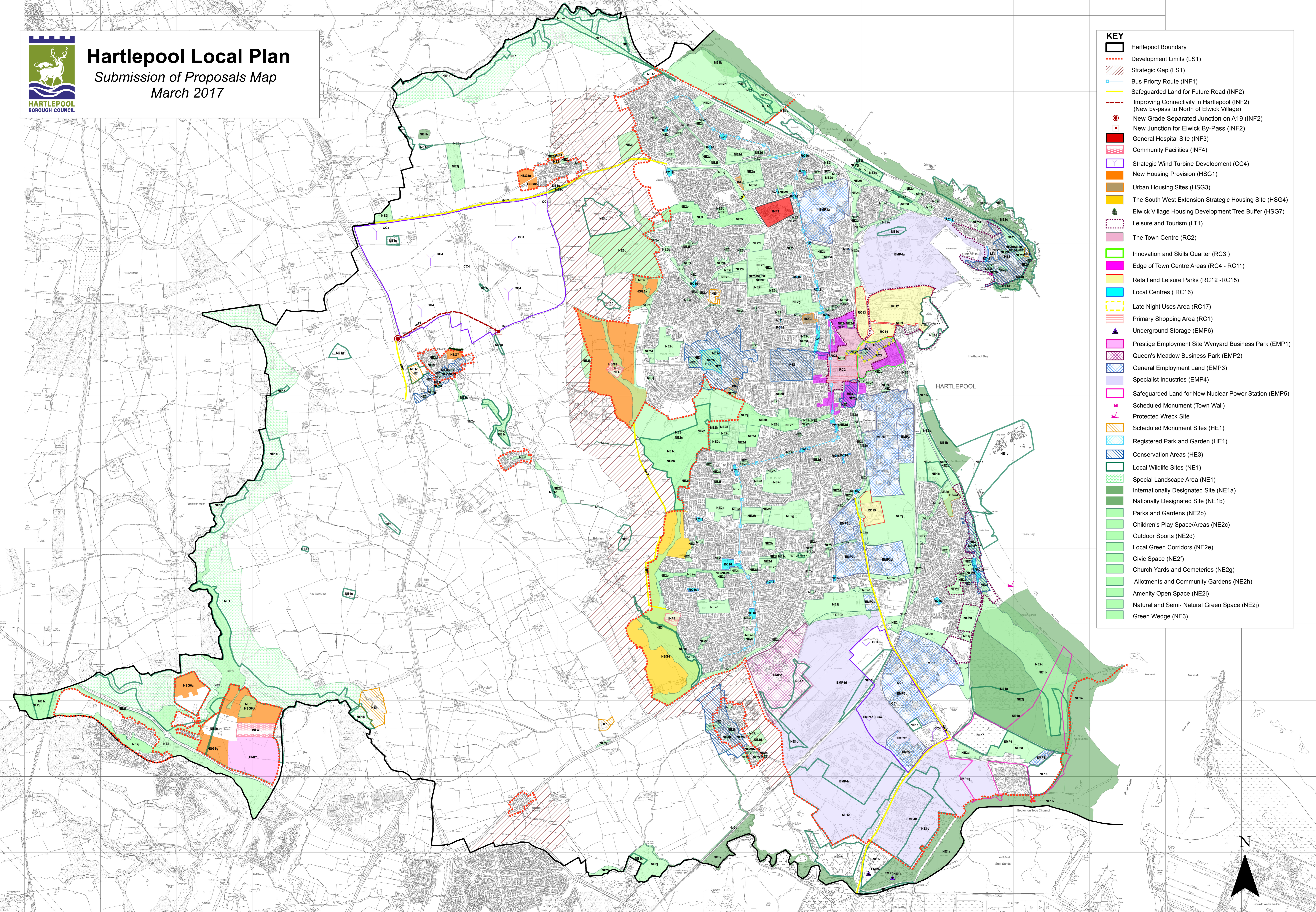




Hartlepool Local Plan

Submission of Proposals Map

March 2017



- KEY**
- Hartlepool Boundary
 - Development Limits (LS1)
 - Strategic Gap (LS1)
 - Bus Priority Route (INF1)
 - Safeguarded Land for Future Road (INF2)
 - Improving Connectivity in Hartlepool (INF2) (New by-pass to North of Elwick Village)
 - New Grade Separated Junction on A19 (INF2)
 - New Junction for Elwick By-Pass (INF2)
 - General Hospital Site (INF3)
 - Community Facilities (INF4)
 - Strategic Wind Turbine Development (CC4)
 - New Housing Provision (HSG1)
 - Urban Housing Sites (HSG3)
 - The South West Extension Strategic Housing Site (HSG4)
 - Elwick Village Housing Development Tree Buffer (HSG7)
 - Leisure and Tourism (LT1)
 - The Town Centre (RC2)
 - Innovation and Skills Quarter (RC3)
 - Edge of Town Centre Areas (RC4 - RC11)
 - Retail and Leisure Parks (RC12 - RC15)
 - Local Centres (RC16)
 - Late Night Uses Area (RC17)
 - Primary Shopping Area (RC1)
 - Underground Storage (EMP6)
 - Prestige Employment Site Wynyard Business Park (EMP1)
 - Queen's Meadow Business Park (EMP2)
 - General Employment Land (EMP3)
 - Specialist Industries (EMP4)
 - Safeguarded Land for New Nuclear Power Station (EMP5)
 - Scheduled Monument (Town Wall)
 - Protected Wreck Site
 - Scheduled Monument Sites (HE1)
 - Registered Park and Garden (HE1)
 - Conservation Areas (HE3)
 - Local Wildlife Sites (NE1)
 - Special Landscape Area (NE1)
 - Internationally Designated Site (NE1a)
 - Nationally Designated Site (NE1b)
 - Parks and Gardens (NE2b)
 - Children's Play Space/Areas (NE2c)
 - Outdoor Sports (NE2g)
 - Local Green Corridors (NE2e)
 - Civic Space (NE2f)
 - Church Yards and Cemeteries (NE2g)
 - Allotments and Community Gardens (NE2h)
 - Amenity Open Space (NE2i)
 - Natural and Semi- Natural Green Space (NE2j)
 - Green Wedge (NE3)

