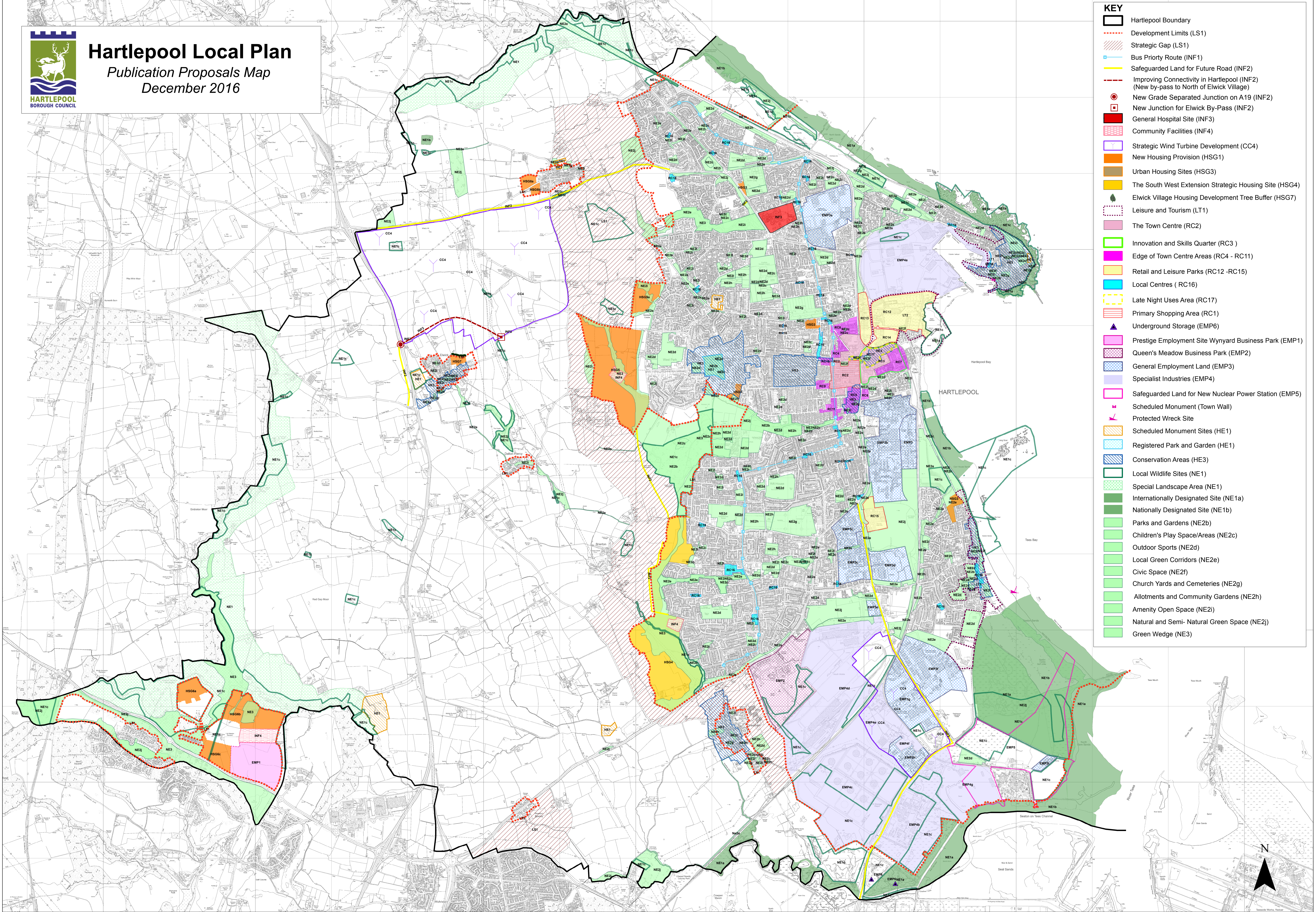




# Hartlepool Local Plan

Publication Proposals Map  
December 2016



- KEY**
- Hartlepool Boundary
  - Development Limits (LS1)
  - Strategic Gap (LS1)
  - Bus Priority Route (INF1)
  - Safeguarded Land for Future Road (INF2)
  - Improving Connectivity in Hartlepool (INF2) (New by-pass to North of Elwick Village)
  - New Grade Separated Junction on A19 (INF2)
  - New Junction for Elwick By-Pass (INF2)
  - General Hospital Site (INF3)
  - Community Facilities (INF4)
  - Strategic Wind Turbine Development (CC4)
  - New Housing Provision (HSG1)
  - Urban Housing Sites (HSG3)
  - The South West Extension Strategic Housing Site (HSG4)
  - Elwick Village Housing Development Tree Buffer (HSG7)
  - Leisure and Tourism (LT1)
  - The Town Centre (RC2)
  - Innovation and Skills Quarter (RC3)
  - Edge of Town Centre Areas (RC4 - RC11)
  - Retail and Leisure Parks (RC12 - RC15)
  - Local Centres (RC16)
  - Late Night Uses Area (RC17)
  - Primary Shopping Area (RC1)
  - Underground Storage (EMP6)
  - Prestige Employment Site Wynyard Business Park (EMP1)
  - Queen's Meadow Business Park (EMP2)
  - General Employment Land (EMP3)
  - Specialist Industries (EMP4)
  - Safeguarded Land for New Nuclear Power Station (EMP5)
  - Scheduled Monument (Town Wall)
  - Protected Wreck Site
  - Scheduled Monument Sites (HE1)
  - Registered Park and Garden (HE1)
  - Conservation Areas (HE3)
  - Local Wildlife Sites (NE1)
  - Special Landscape Area (NE1)
  - Internationally Designated Site (NE1a)
  - Nationally Designated Site (NE1b)
  - Parks and Gardens (NE2b)
  - Children's Play Space/Areas (NE2c)
  - Outdoor Sports (NE2d)
  - Local Green Corridors (NE2e)
  - Civic Space (NE2f)
  - Church Yards and Cemeteries (NE2g)
  - Allotments and Community Gardens (NE2h)
  - Amenity Open Space (NE2i)
  - Natural and Semi-Natural Green Space (NE2j)
  - Green Wedge (NE3)