



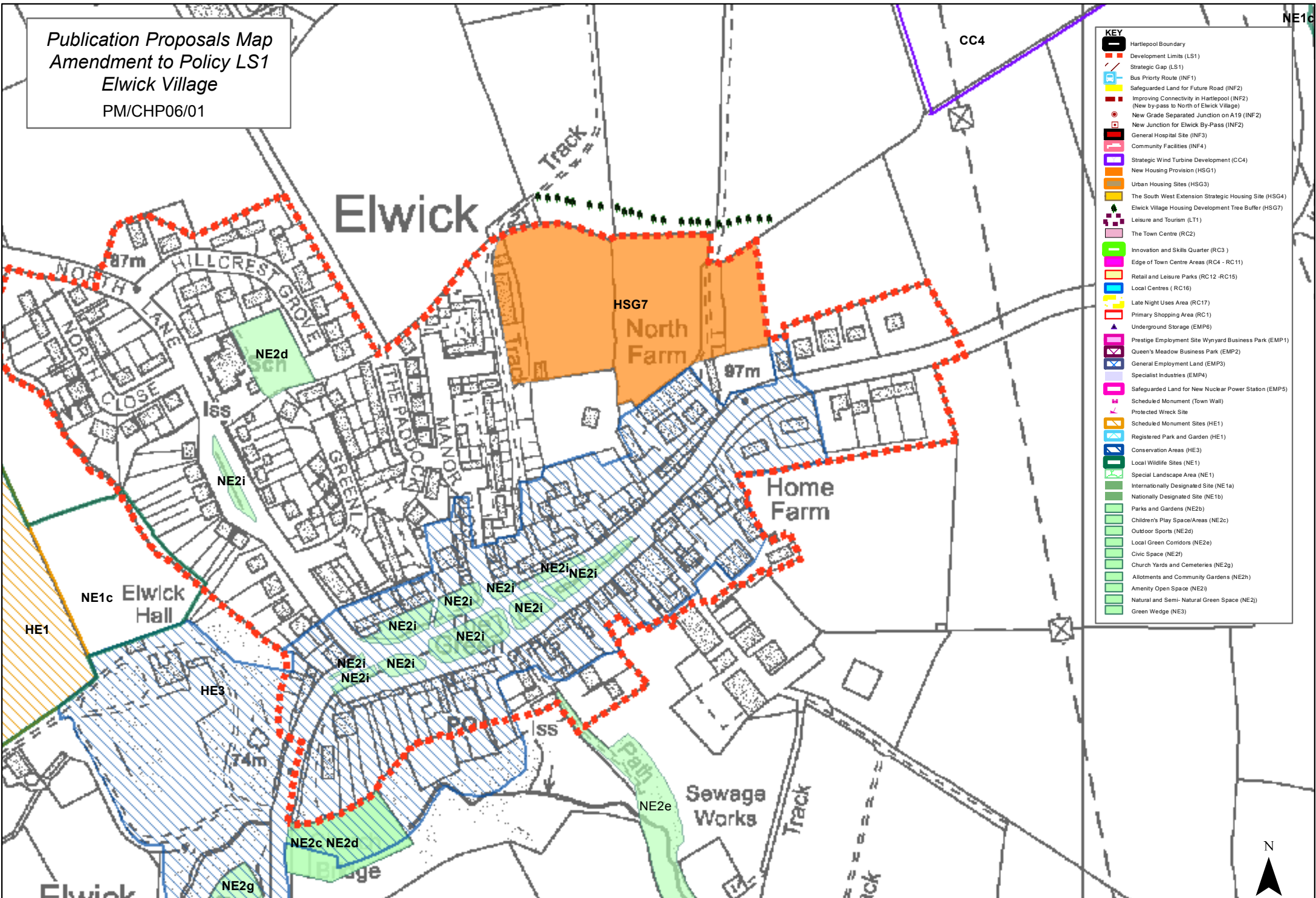
# Hartlepool Local Plan

## Proposals Map



*Amendments and suggested  
changes to the  
Publication Proposals Map*

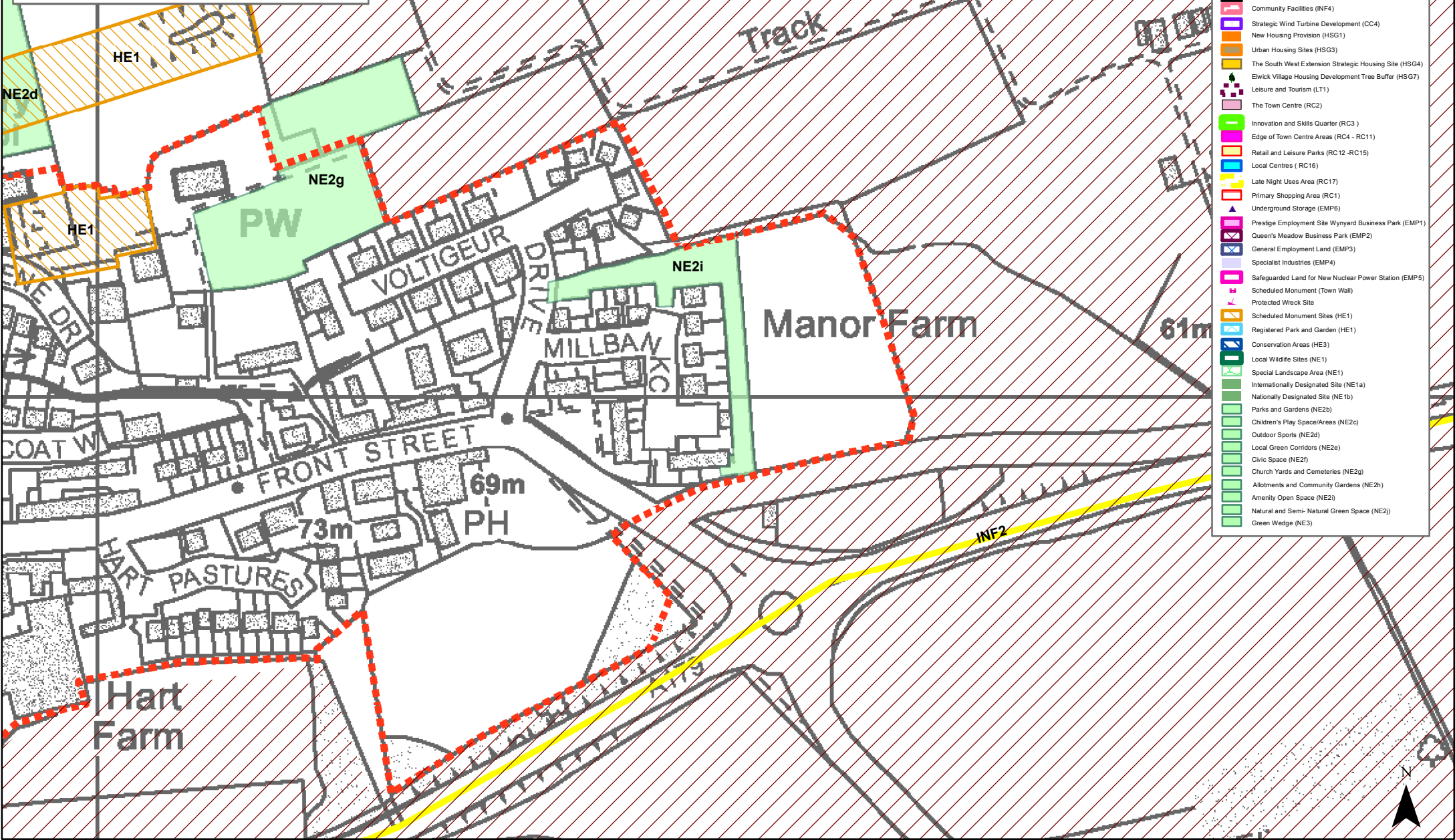
Publication Proposals Map  
 Amendment to Policy LS1  
 Elwick Village  
 PM/CHP06/01



- KEY**
- Hartlepool Boundary
  - Development Limits (LS1)
  - Strategic Gap (LS1)
  - Bus Priority Route (INF1)
  - Safeguarded Land for Future Road (INF2)
  - Improving Connectivity in Hartlepool (INF2) (New by-pass to North of Elwick Village)
  - New Grade Separated Junction on A19 (INF2)
  - New Junction for Elwick By-Pass (INF2)
  - General Hospital Site (INF3)
  - Community Facilities (INF4)
  - Strategic Wind Turbine Development (CC4)
  - New Housing Provision (HSG1)
  - Urban Housing Sites (HSG3)
  - The South West Extension Strategic Housing Site (HSG4)
  - Elwick Village Housing Development Tree Buffer (HSG7)
  - Leisure and Tourism (LT1)
  - The Town Centre (RC2)
  - Innovation and Skills Quarter (RC3)
  - Edge of Town Centre Areas (RC4 - RC11)
  - Retail and Leisure Parks (RC12 - RC15)
  - Local Centres (RC16)
  - Late Night Uses Area (RC17)
  - Primary Shopping Area (RC1)
  - Underground Storage (EMP6)
  - Prestige Employment Site Wynyard Business Park (EMP1)
  - Queen's Meadow Business Park (EMP2)
  - General Employment Land (EMP3)
  - Specialist Industries (EMP4)
  - Safeguarded Land for New Nuclear Power Station (EMP5)
  - Scheduled Monument (Town Wall)
  - Protected Wreck Site
  - Scheduled Monument Sites (HE1)
  - Registered Park and Garden (HE1)
  - Conservation Areas (HE3)
  - Local Wildlife Sites (NE1)
  - Special Landscape Area (NE1)
  - Internationally Designated Site (NE1a)
  - Nationally Designated Site (NE1b)
  - Parks and Gardens (NE2b)
  - Children's Play Space/Areas (NE2c)
  - Outdoor Sports (NE2d)
  - Local Green Corridors (NE2e)
  - Civic Space (NE2f)
  - Church Yards and Cemeteries (NE2g)
  - Allotments and Community Gardens (NE2h)
  - Amenity Open Space (NE2i)
  - Natural and Semi-Natural Green Space (NE2j)
  - Green Wedge (NE3)

Publication Proposals Map  
Amendment to Policy LS1  
Millbank Close, Hart Village

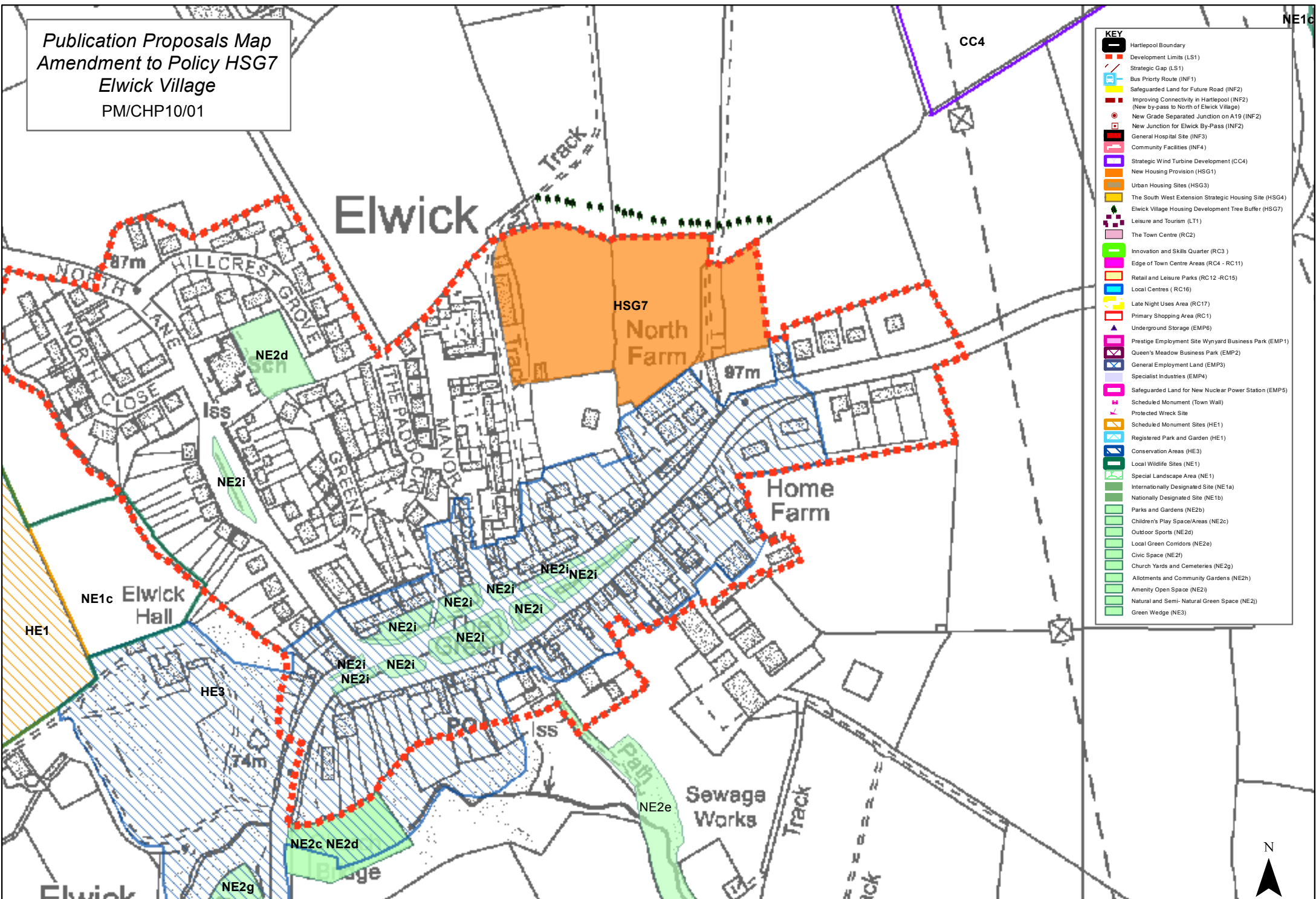
PM/CHP/06/02



KEY	
	Hartlepool Boundary
	Development Limits (LS1)
	Strategic Gap (LS1)
	Bus Priority Route (INF1)
	Safeguarded Land for Future Road (INF2)
	Improving Connectivity in Hartlepool (INF2) (New by-pass to North of Elwick Village)
	New Grade Separated Junction on A19 (INF2)
	New Junction for Elwick By-Pass (INF2)
	General Hospital Site (INF3)
	Community Facilities (INF4)
	Strategic Wind Turbine Development (CC4)
	New Housing Provision (HSG1)
	Urban Housing Sites (HSG3)
	The South West Extension Strategic Housing Site (HSG4)
	Elwick Village Housing Development Tree Buffer (HSG7)
	Leisure and Tourism (LT1)
	The Town Centre (RC2)
	Innovation and Skills Quarter (RC3)
	Edge of Town Centre Areas (RC4 - RC11)
	Retail and Leisure Parks (RC12 - RC15)
	Local Centres ( RC16)
	Late Night Uses Area (RC17)
	Primary Shopping Area (RC1)
	Underground Storage (EMP6)
	Prestige Employment Site Wynyard Business Park (EMP1)
	Queen's Meadow Business Park (EMP2)
	General Employment Land (EMP3)
	Specialist Industries (EMP4)
	Safeguarded Land for New Nuclear Power Station (EMP5)
	Scheduled Monument (Town Wall)
	Protected Wreck Site
	Scheduled Monument Sites (HE1)
	Registered Park and Garden (HE1)
	Conservation Areas (HE3)
	Local Wildlife Sites (NE1)
	Special Landscape Area (NE1)
	Internationally Designated Site (NE1a)
	Nationally Designated Site (NE1b)
	Parks and Gardens (NE2b)
	Children's Play Space/Areas (NE2c)
	Outdoor Sports (NE2a)
	Local Green Corridors (NE2e)
	Civic Space (NE2f)
	Church Yards and Cemeteries (NE2g)
	Allotments and Community Gardens (NE2h)
	Amenity Open Space (NE2i)
	Natural and Semi- Natural Green Space (NE2j)
	Green Wedge (NE3)

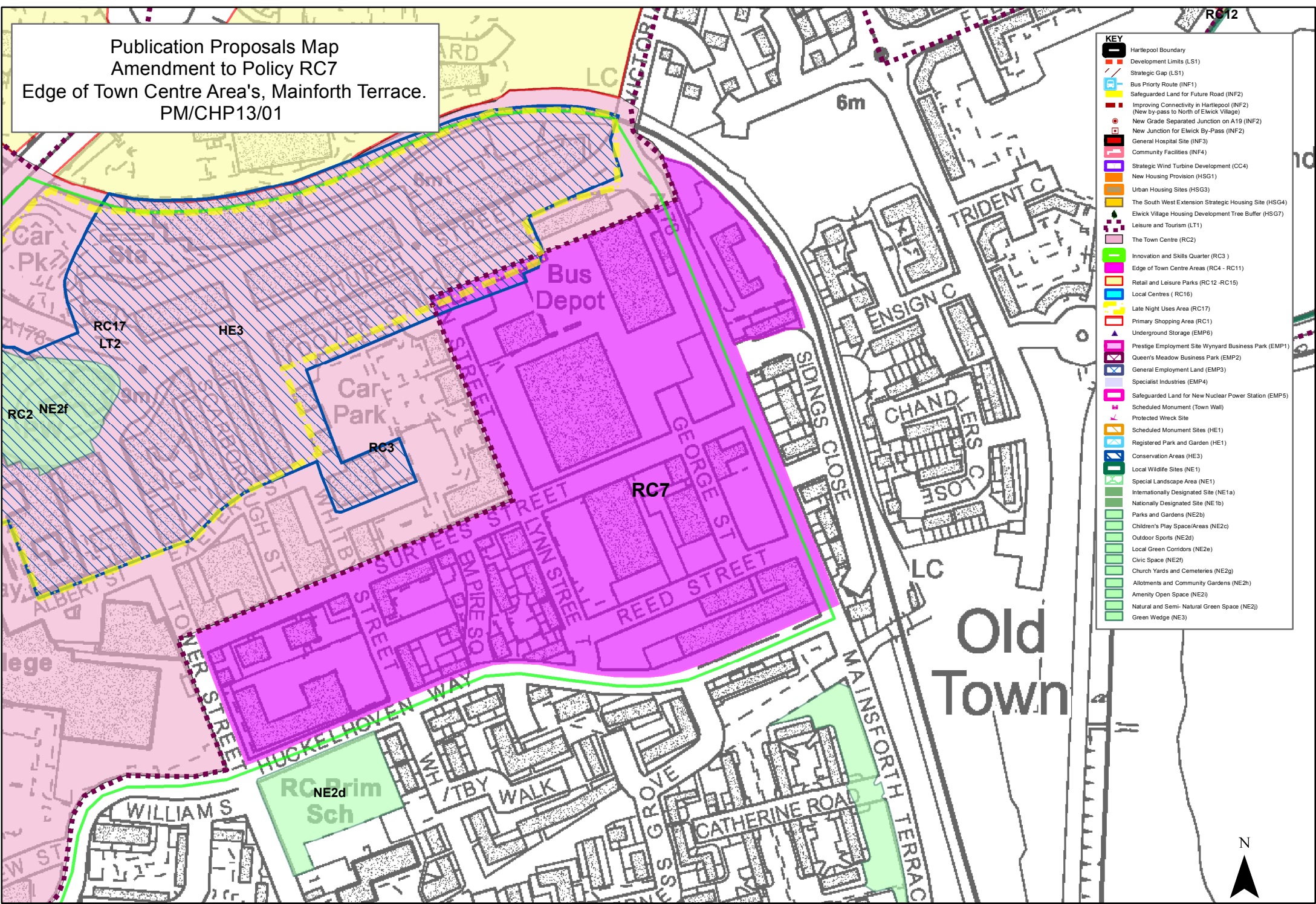
Publication Proposals Map  
 Amendment to Policy HSG7  
 Elwick Village  
 PM/CHP10/01

NE1c



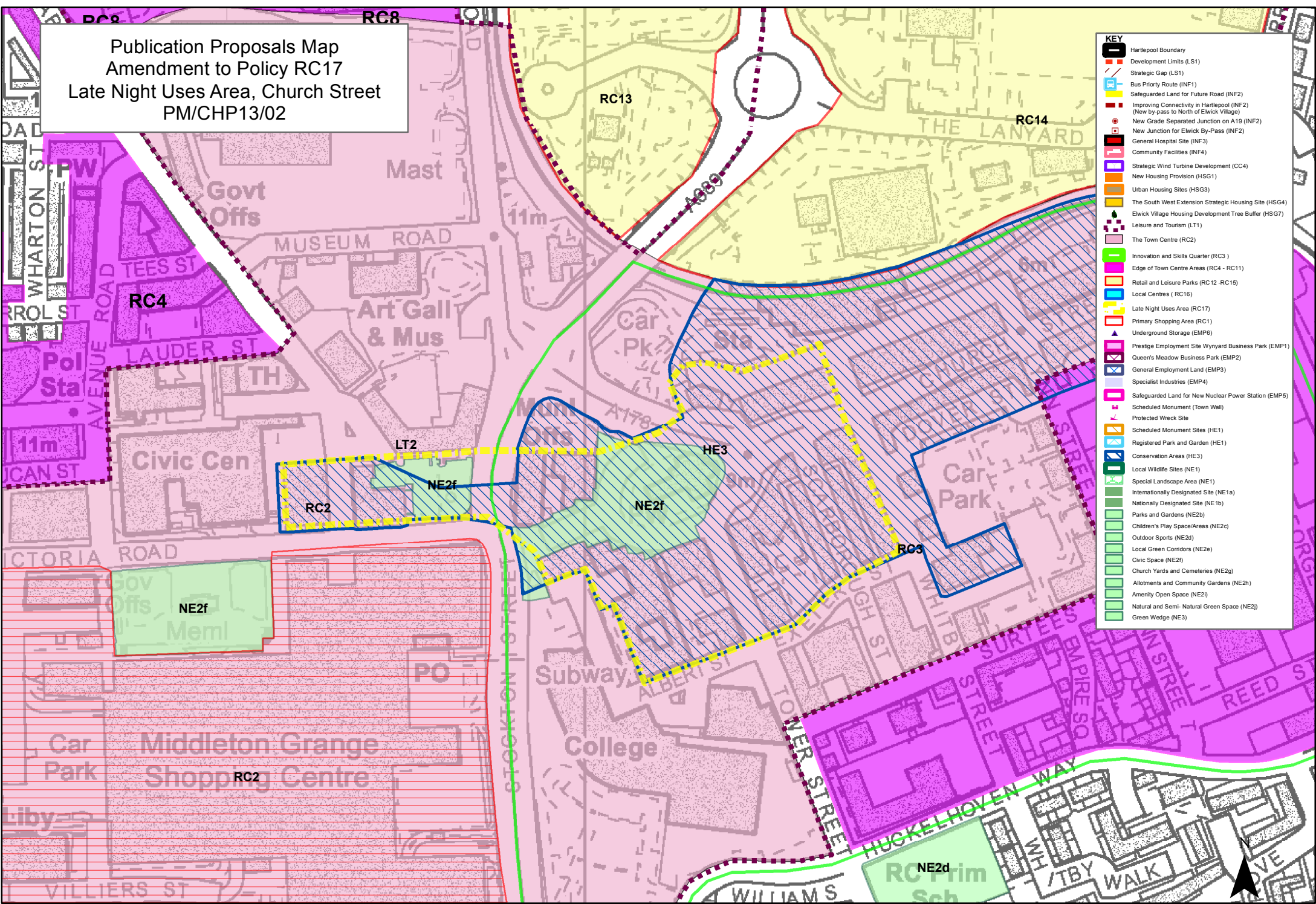
- KEY**
- Hartlepool Boundary
  - Development Limits (LS1)
  - Strategic Gap (LS1)
  - Bus Priority Route (INF1)
  - Safeguarded Land for Future Road (INF2)
  - Improving Connectivity in Hartlepool (INF2) (New by-pass to North of Elwick Village)
  - New Grade Separated Junction on A19 (INF2)
  - New Junction for Elwick By-Pass (INF2)
  - General Hospital Site (INF3)
  - Community Facilities (INF4)
  - Strategic Wind Turbine Development (CC4)
  - New Housing Provision (HSG1)
  - Urban Housing Sites (HSG3)
  - The South West Extension Strategic Housing Site (HSG4)
  - Elwick Village Housing Development Tree Buffer (HSG7)
  - Leisure and Tourism (LT1)
  - The Town Centre (RC2)
  - Innovation and Skills Quarter (RC3)
  - Edge of Town Centre Areas (RC4 - RC11)
  - Retail and Leisure Parks (RC12 - RC15)
  - Local Centres (RC16)
  - Late Night Uses Area (RC17)
  - Primary Shopping Area (RC1)
  - Underground Storage (EMP6)
  - Prestige Employment Site Wynyard Business Park (EMP1)
  - Queen's Meadow Business Park (EMP2)
  - General Employment Land (EMP3)
  - Specialist Industries (EMP4)
  - Safeguarded Land for New Nuclear Power Station (EMP5)
  - Scheduled Monument (Town Wall)
  - Protected Wreck Site
  - Scheduled Monument Sites (HE1)
  - Registered Park and Garden (HE1)
  - Conservation Areas (HE3)
  - Local Wildlife Sites (NE1)
  - Special Landscape Area (NE1)
  - Internationally Designated Site (NE1a)
  - Nationally Designated Site (NE1b)
  - Parks and Gardens (NE2b)
  - Children's Play Space/Areas (NE2c)
  - Outdoor Sports (NE2d)
  - Local Green Corridors (NE2e)
  - Civic Space (NE2f)
  - Church Yards and Cemeteries (NE2g)
  - Allotments and Community Gardens (NE2h)
  - Amenity Open Space (NE2i)
  - Natural and Semi-Natural Green Space (NE2j)
  - Green Wedge (NE3)

Publication Proposals Map  
 Amendment to Policy RC7  
 Edge of Town Centre Area's, Mainforth Terrace.  
 PM/CHP13/01



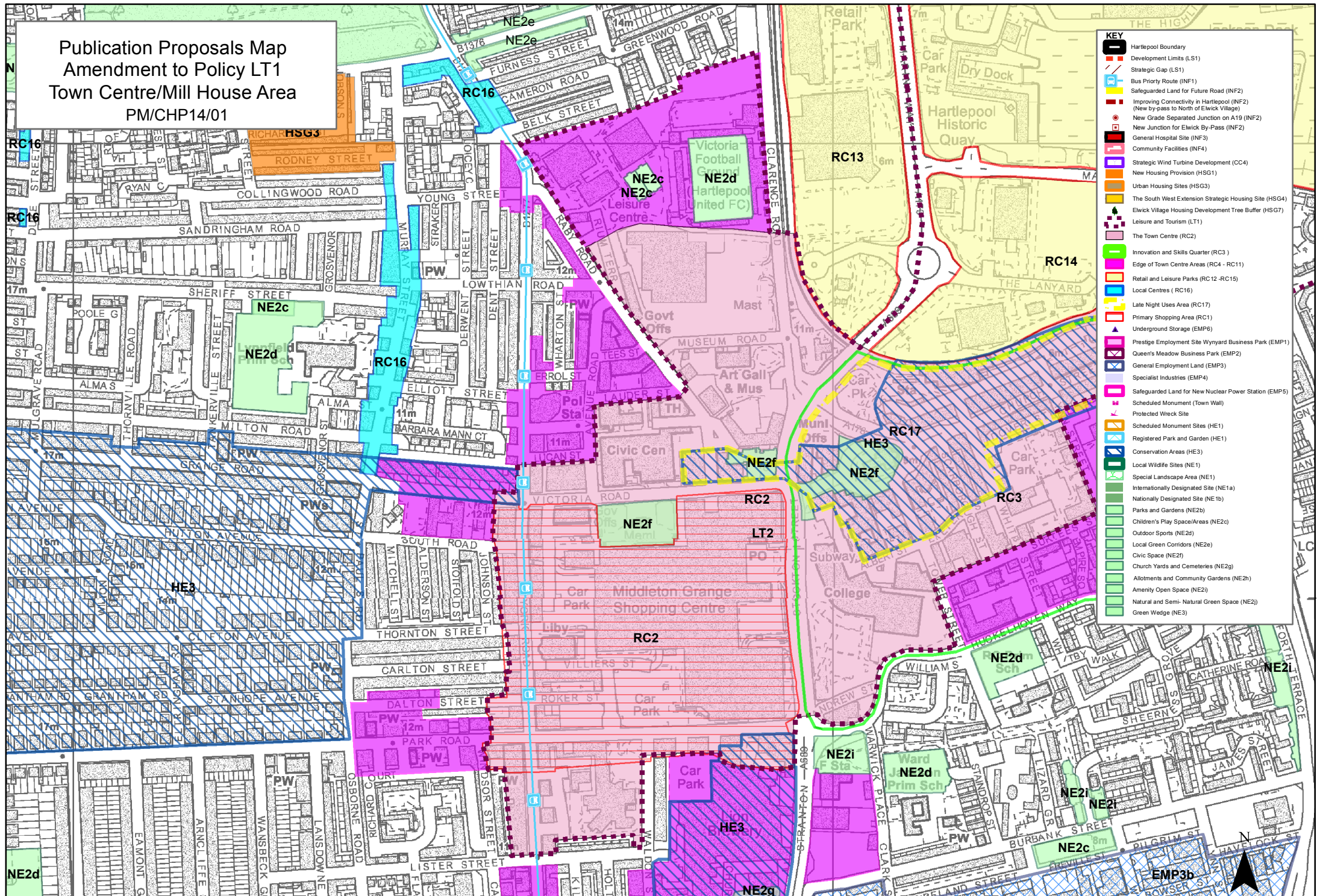
- KEY**
- Hartlepool Boundary
  - Development Limits (LS1)
  - Strategic Gap (LS1)
  - Bus Priority Route (INF1)
  - Safeguarded Land for Future Road (INF2)
  - Improving Connectivity in Hartlepool (INF2) (New by-pass to North of Elwick Village)
  - New Grade Separated Junction on A19 (INF2)
  - New Junction for Elwick By-Pass (INF2)
  - General Hospital Site (INF3)
  - Community Facilities (INF4)
  - Strategic Wind Turbine Development (CC4)
  - New Housing Provision (HSG1)
  - Urban Housing Sites (HSG3)
  - The South West Extension Strategic Housing Site (HSG4)
  - Elwick Village Housing Development Tree Buffer (HSG7)
  - Leisure and Tourism (LT1)
  - The Town Centre (RC2)
  - Innovation and Skills Quarter (RC3)
  - Edge of Town Centre Areas (RC4 - RC11)
  - Retail and Leisure Parks (RC12-RC15)
  - Local Centres (RC16)
  - Late Night Uses Area (RC17)
  - Primary Shopping Area (RC1)
  - Underground Storage (EMP6)
  - Prestige Employment Site Wynyard Business Park (EMP1)
  - Queen's Meadow Business Park (EMP2)
  - General Employment Land (EMP3)
  - Specialist Industries (EMP4)
  - Safeguarded Land for New Nuclear Power Station (EMP5)
  - Scheduled Monument (Town Wall)
  - Protected Wreck Site
  - Scheduled Monument Sites (HE1)
  - Registered Park and Garden (HE1)
  - Conservation Areas (HE3)
  - Local Wildlife Sites (NE1)
  - Special Landscape Area (NE1)
  - Internationally Designated Site (NE1a)
  - Nationally Designated Site (NE1b)
  - Parks and Gardens (NE2b)
  - Children's Play Space/Areas (NE2c)
  - Outdoor Sports (NE2a)
  - Local Green Corridors (NE2e)
  - Civic Space (NE2f)
  - Church Yards and Cemeteries (NE2g)
  - Allotments and Community Gardens (NE2h)
  - Amenity Open Space (NE2i)
  - Natural and Semi-Natural Green Space (NE2j)
  - Green Wedge (NE3)

Publication Proposals Map  
 Amendment to Policy RC17  
 Late Night Uses Area, Church Street  
 PM/CHP13/02



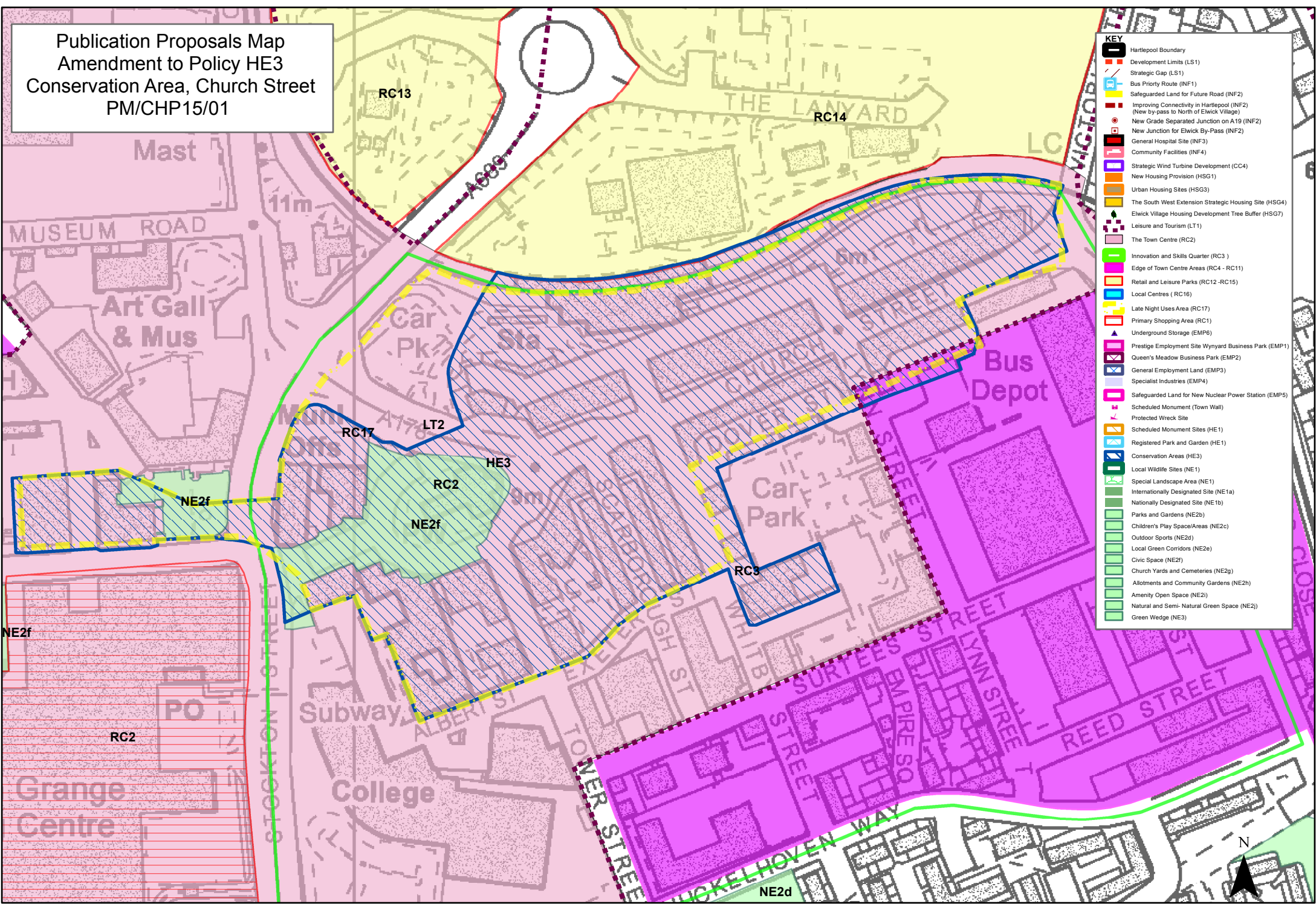
KEY	
	Hartlepool Boundary
	Development Limits (LS1)
	Strategic Gap (LS1)
	Bus Priority Route (INF1)
	Safeguarded Land for Future Road (INF2)
	Improving Connectivity in Hartlepool (INF2) (New by-pass to North of Elwick Village)
	New Grade Separated Junction on A19 (INF2)
	New Junction for Elwick By-Pass (INF2)
	General Hospital Site (INF3)
	Community Facilities (INF4)
	Strategic Wind Turbine Development (CC4)
	New Housing Provision (HSG1)
	Urban Housing Sites (HSG3)
	The South West Extension Strategic Housing Site (HSG4)
	Elwick Village Housing Development Tree Buffer (HSG7)
	Leisure and Tourism (LT1)
	The Town Centre (RC2)
	Innovation and Skills Quarter (RC3)
	Edge of Town Centre Areas (RC4 - RC11)
	Retail and Leisure Parks (RC12 - RC15)
	Local Centres (RC16)
	Late Night Uses Area (RC17)
	Primary Shopping Area (RC1)
	Underground Storage (EMP6)
	Prestige Employment Site Wynyard Business Park (EMP1)
	Queen's Meadow Business Park (EMP2)
	General Employment Land (EMP3)
	Specialist Industries (EMP4)
	Safeguarded Land for New Nuclear Power Station (EMP5)
	Scheduled Monument (Town Wall)
	Protected Wreck Site
	Scheduled Monument Sites (HE1)
	Registered Park and Garden (HE1)
	Conservation Areas (HE3)
	Local Wildlife Sites (NE1)
	Special Landscape Area (NE1)
	Internationally Designated Site (NE1a)
	Nationally Designated Site (NE1b)
	Parks and Gardens (NE2b)
	Children's Play Space/Areas (NE2c)
	Outdoor Sports (NE2d)
	Local Green Corridors (NE2e)
	Civic Space (NE2f)
	Church Yards and Cemeteries (NE2g)
	Allotments and Community Gardens (NE2h)
	Amenity Open Space (NE2i)
	Natural and Semi-Natural Green Space (NE2j)
	Green Wedge (NE3)

Publication Proposals Map  
Amendment to Policy LT1  
Town Centre/Mill House Area  
PM/CHP14/01



- KEY**
- Hartlepool Boundary
  - Development Limits (LS1)
  - Strategic Gap (LS1)
  - Bus Priority Route (INF1)
  - Safeguarded Land for Future Road (INF2)
  - Improving Connectivity in Hartlepool (INF2)
  - New by-pass to North of Elwick Village (INF2)
  - New Grade Separated Junction on A19 (INF2)
  - New Junction for Elwick By-Pass (INF2)
  - General Hospital Site (INF3)
  - Community Facilities (INF4)
  - Strategic Wind Turbine Development (CC4)
  - New Housing Provision (HSG1)
  - Urban Housing Sites (HSG3)
  - The South West Extension Strategic Housing Site (HSG4)
  - Elwick Village Housing Development Tree Buffer (HSG7)
  - Leisure and Tourism (LT1)
  - The Town Centre (RC2)
  - Innovation and Skills Quarter (RC3)
  - Edge of Town Centre Areas (RC4 - RC11)
  - Retail and Leisure Parks (RC12-RC15)
  - Local Centres (RC16)
  - Late Night Uses Area (RC17)
  - Primary Shopping Area (RC1)
  - Underground Storage (EMP6)
  - Prestige Employment Site Wynyard Business Park (EMP1)
  - Queen's Meadow Business Park (EMP2)
  - General Employment Land (EMP3)
  - Specialist Industries (EMP4)
  - Safeguarded Land for New Nuclear Power Station (EMP5)
  - Scheduled Monument (Town Wall)
  - Protected Wreck Site
  - Scheduled Monument Sites (HE1)
  - Registered Park and Garden (HE1)
  - Conservation Areas (HE3)
  - Local Wildlife Sites (NE1)
  - Special Landscape Area (NE1)
  - Internationally Designated Site (NE1a)
  - Nationally Designated Site (NE1b)
  - Parks and Gardens (NE2b)
  - Children's Play Space/Areas (NE2c)
  - Outdoor Sports (NE2a)
  - Local Green Corridors (NE2e)
  - Civic Space (NE2f)
  - Church Yards and Cemeteries (NE2g)
  - Allotments and Community Gardens (NE2h)
  - Amenity Open Space (NE2i)
  - Natural and Semi-Natural Green Space (NE2j)
  - Green Wedge (NE3)

Publication Proposals Map  
 Amendment to Policy HE3  
 Conservation Area, Church Street  
 PM/CHP15/01

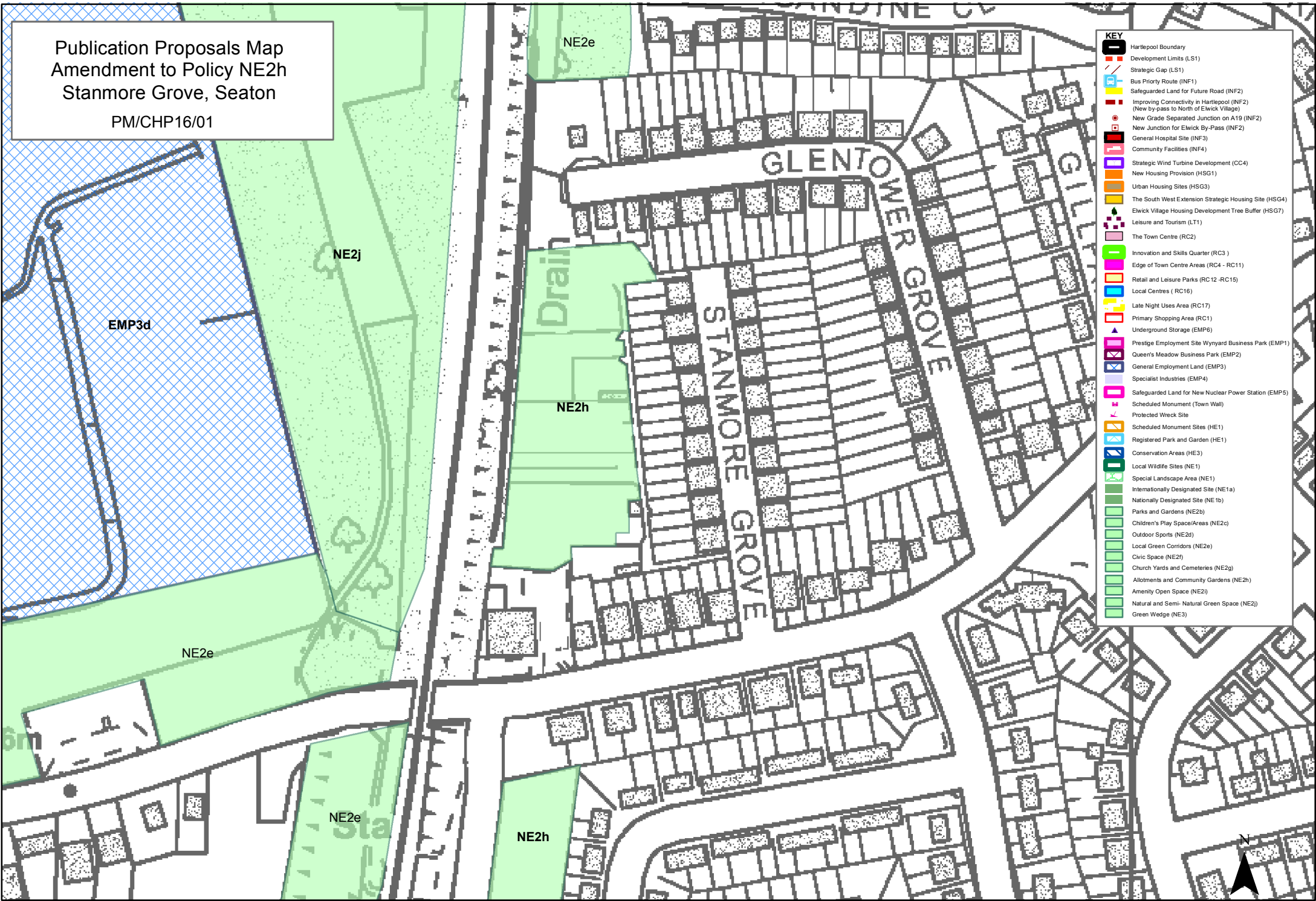


- KEY**
- Hartlepool Boundary
  - Development Limits (LS1)
  - Strategic Gap (LS1)
  - Bus Priority Route (INF1)
  - Safeguarded Land for Future Road (INF2)
  - Improving Connectivity in Hartlepool (INF2)
  - New by-pass to North of Elwick Village (INF2)
  - New Grade Separated Junction on A19 (INF2)
  - New Junction for Elwick By-Pass (INF2)
  - General Hospital Site (INF3)
  - Community Facilities (INF4)
  - Strategic Wind Turbine Development (CC4)
  - New Housing Provision (HSG1)
  - Urban Housing Sites (HSG3)
  - The South West Extension Strategic Housing Site (HSG4)
  - Elwick Village Housing Development Tree Buffer (HSG7)
  - Leisure and Tourism (LT1)
  - The Town Centre (RC2)
  - Innovation and Skills Quarter (RC3)
  - Edge of Town Centre Areas (RC4 - RC11)
  - Retail and Leisure Parks (RC12-RC15)
  - Local Centres (RC16)
  - Late Night Uses Area (RC17)
  - Primary Shopping Area (RC1)
  - Underground Storage (EMP6)
  - Prestige Employment Site Wynyard Business Park (EMP1)
  - Queen's Meadow Business Park (EMP2)
  - General Employment Land (EMP3)
  - Specialist Industries (EMP4)
  - Safeguarded Land for New Nuclear Power Station (EMP5)
  - Scheduled Monument (Town Wall)
  - Protected Wreck Site
  - Scheduled Monument Sites (HE1)
  - Registered Park and Garden (HE1)
  - Conservation Areas (HE3)
  - Local Wildlife Sites (NE1)
  - Special Landscape Area (NE1)
  - Internationally Designated Site (NE1a)
  - Nationally Designated Site (NE1b)
  - Parks and Gardens (NE2b)
  - Children's Play Space/Areas (NE2c)
  - Outdoor Sports (NE2d)
  - Local Green Corridors (NE2e)
  - Civic Space (NE2f)
  - Church Yards and Cemeteries (NE2g)
  - Allotments and Community Gardens (NE2h)
  - Amenity Open Space (NE2i)
  - Natural and Semi-Natural Green Space (NE2j)
  - Green Wedge (NE3)



Publication Proposals Map  
Amendment to Policy NE2h  
Stanmore Grove, Seaton

PM/CHP16/01



KEY	
	Hartlepool Boundary
	Development Limits (LS1)
	Strategic Gap (LS1)
	Bus Priority Route (INF1)
	Safeguarded Land for Future Road (INF2)
	Improving Connectivity in Hartlepool (INF2)
	New by-pass to North of Elwick Village (INF2)
	New Grade Separated Junction on A19 (INF2)
	New Junction for Elwick By-Pass (INF2)
	General Hospital Site (INF3)
	Community Facilities (INF4)
	Strategic Wind Turbine Development (CC4)
	New Housing Provision (HSG1)
	Urban Housing Sites (HSG3)
	The South West Extension Strategic Housing Site (HSG4)
	Elwick Village Housing Development Tree Buffer (HSG7)
	Leisure and Tourism (LT1)
	The Town Centre (RC2)
	Innovation and Skills Quarter (RC3)
	Edge of Town Centre Areas (RC4 - RC11)
	Retail and Leisure Parks (RC12-RC15)
	Local Centres (RC16)
	Late Night Uses Area (RC17)
	Primary Shopping Area (RC1)
	Underground Storage (EMP6)
	Prestige Employment Site Wynyard Business Park (EMP1)
	Queen's Meadow Business Park (EMP2)
	General Employment Land (EMP3)
	Specialist Industries (EMP4)
	Safeguarded Land for New Nuclear Power Station (EMP5)
	Scheduled Monument (Town Wall)
	Protected Wreck Site
	Scheduled Monument Sites (HE1)
	Registered Park and Garden (HE1)
	Conservation Areas (HE3)
	Local Wildlife Sites (NE1)
	Special Landscape Area (NE1)
	Internationally Designated Site (NE1a)
	Nationally Designated Site (NE1b)
	Parks and Gardens (NE2b)
	Children's Play Space/Areas (NE2c)
	Outdoor Sports (NE2d)
	Local Green Corridors (NE2e)
	Civic Space (NE2f)
	Church Yards and Cemeteries (NE2g)
	Allotments and Community Gardens (NE2h)
	Amenity Open Space (NE2i)
	Natural and Semi-Natural Green Space (NE2j)
	Green Wedge (NE3)

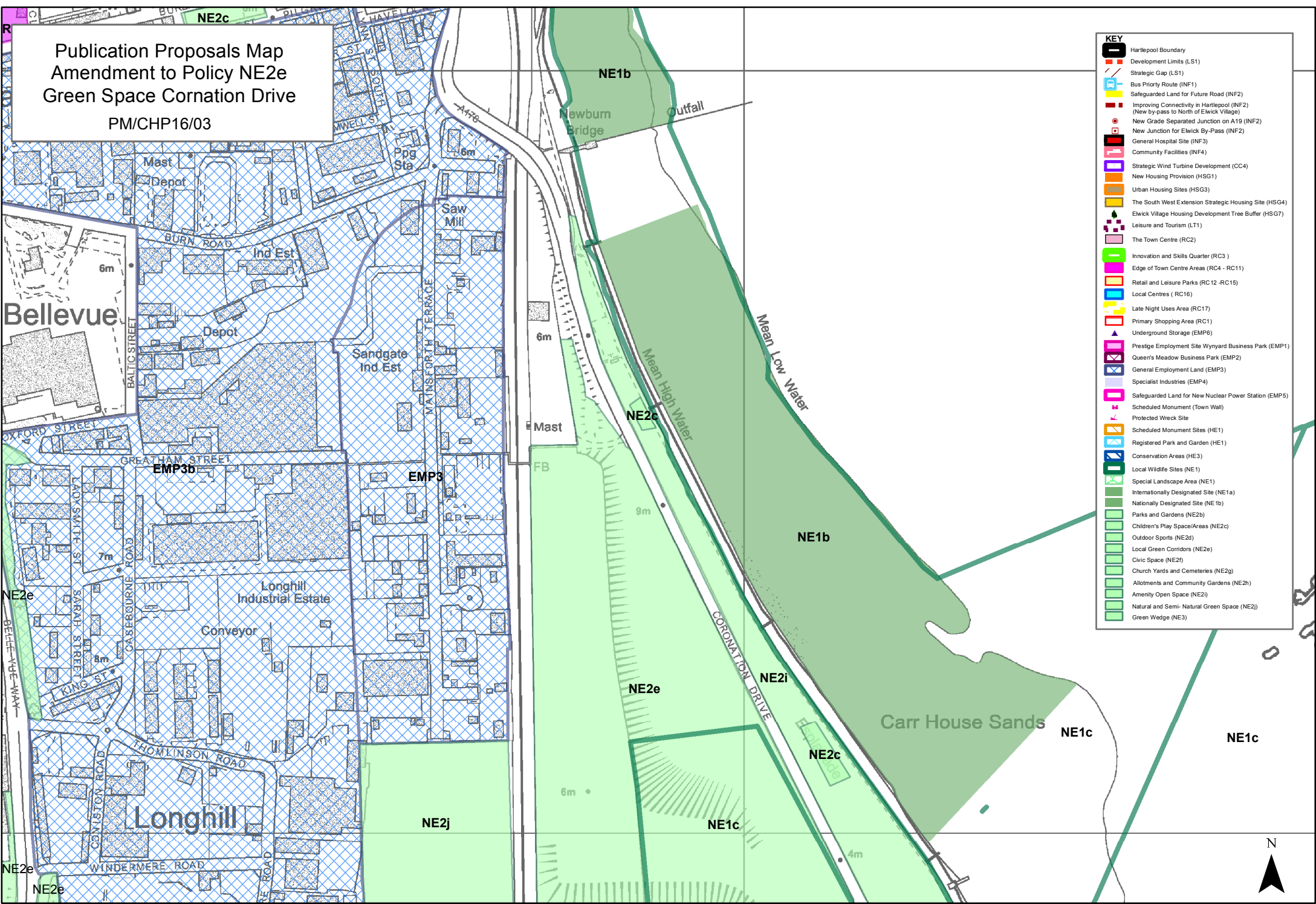
Publication Proposals Map  
Amendment to Policy NE2j  
Dehaviland Way/Tees Road

PM/CHP16/02



- KEY**
- Hartlepool Boundary
  - Development Limits (LS1)
  - Strategic Gap (LS1)
  - Bus Priority Route (INF1)
  - Safeguarded Land for Future Road (INF2)
  - Improving Connectivity in Hartlepool (INF2) (New by-pass to North of Elwick Village)
  - New Grade Separated Junction on A19 (INF2)
  - New Junction for Elwick By-Pass (INF2)
  - General Hospital Site (INF3)
  - Community Facilities (INF4)
  - Strategic Wind Turbine Development (CC4)
  - New Housing Provision (HSG1)
  - Urban Housing Sites (HSG3)
  - The South West Extension Strategic Housing Site (HSG4)
  - Elwick Village Housing Development Tree Buffer (HSG7)
  - Leisure and Tourism (LT1)
  - The Town Centre (RC2)
  - Innovation and Skills Quarter (RC3)
  - Edge of Town Centre Areas (RC4 - RC11)
  - Retail and Leisure Parks (RC12 - RC15)
  - Local Centres (RC16)
  - Late Night Uses Area (RC17)
  - Primary Shopping Area (RC1)
  - Underground Storage (EMP6)
  - Prestige Employment Site Wynyard Business Park (EMP1)
  - Queen's Meadow Business Park (EMP2)
  - General Employment Land (EMP3)
  - Specialist Industries (EMP4)
  - Safeguarded Land for New Nuclear Power Station (EMP5)
  - Scheduled Monument (Town Wall)
  - Protected Wreck Site
  - Scheduled Monument Sites (HE1)
  - Registered Park and Garden (HE1)
  - Conservation Areas (HE3)
  - Local Wildlife Sites (NE1)
  - Special Landscape Area (NE1)
  - Internationally Designated Site (NE1a)
  - Nationally Designated Site (NE1b)
  - Parks and Gardens (NE2b)
  - Children's Play Space/Areas (NE2c)
  - Outdoor Sports (NE2d)
  - Local Green Corridors (NE2e)
  - Civic Space (NE2f)
  - Church Yards and Cemeteries (NE2g)
  - Allotments and Community Gardens (NE2h)
  - Amenity Open Space (NE2i)
  - Natural and Semi-Natural Green Space (NE2j)
  - Green Wedge (NE3)

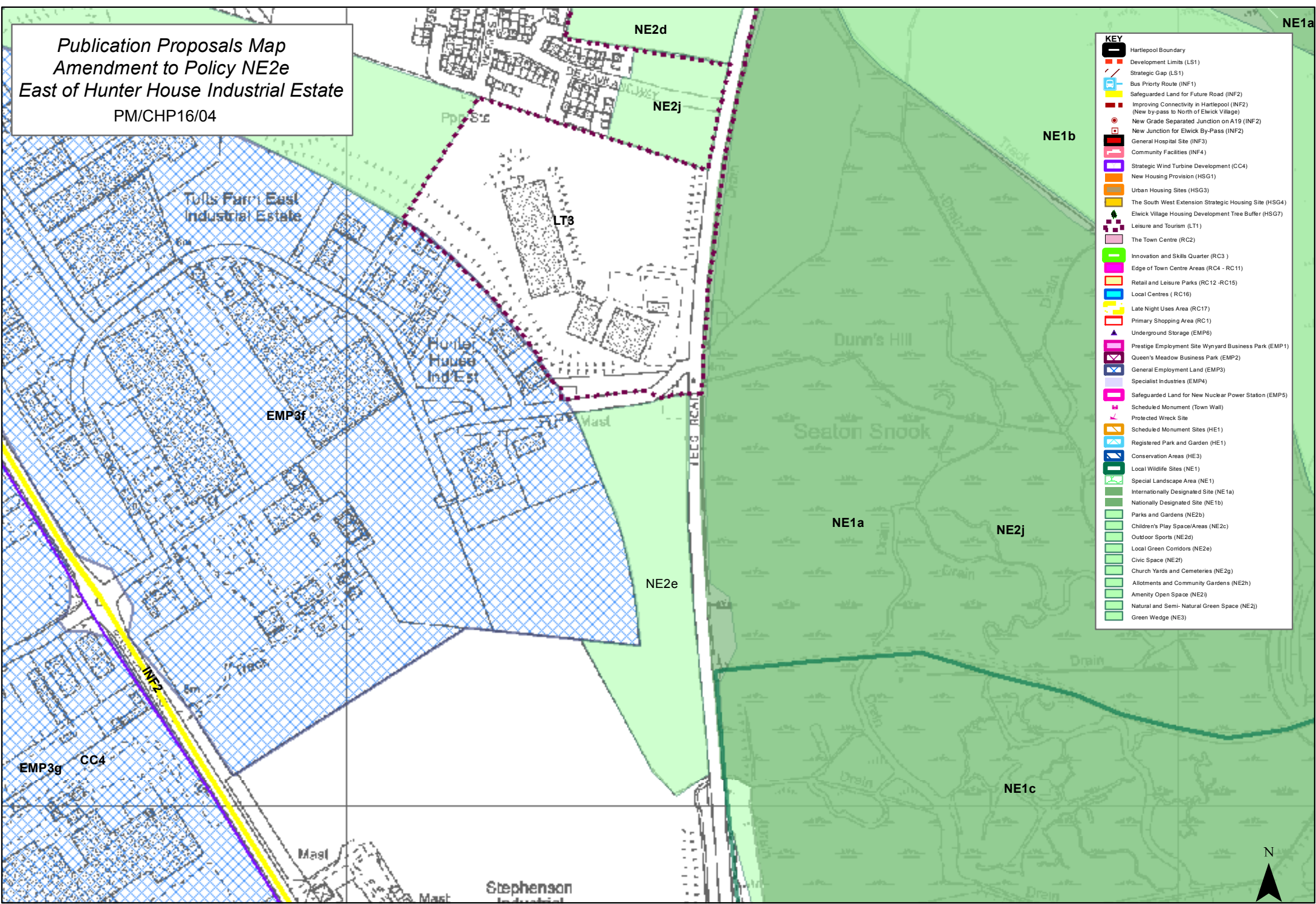
Publication Proposals Map  
 Amendment to Policy NE2e  
 Green Space Coronation Drive  
 PM/CHP16/03



**KEY**

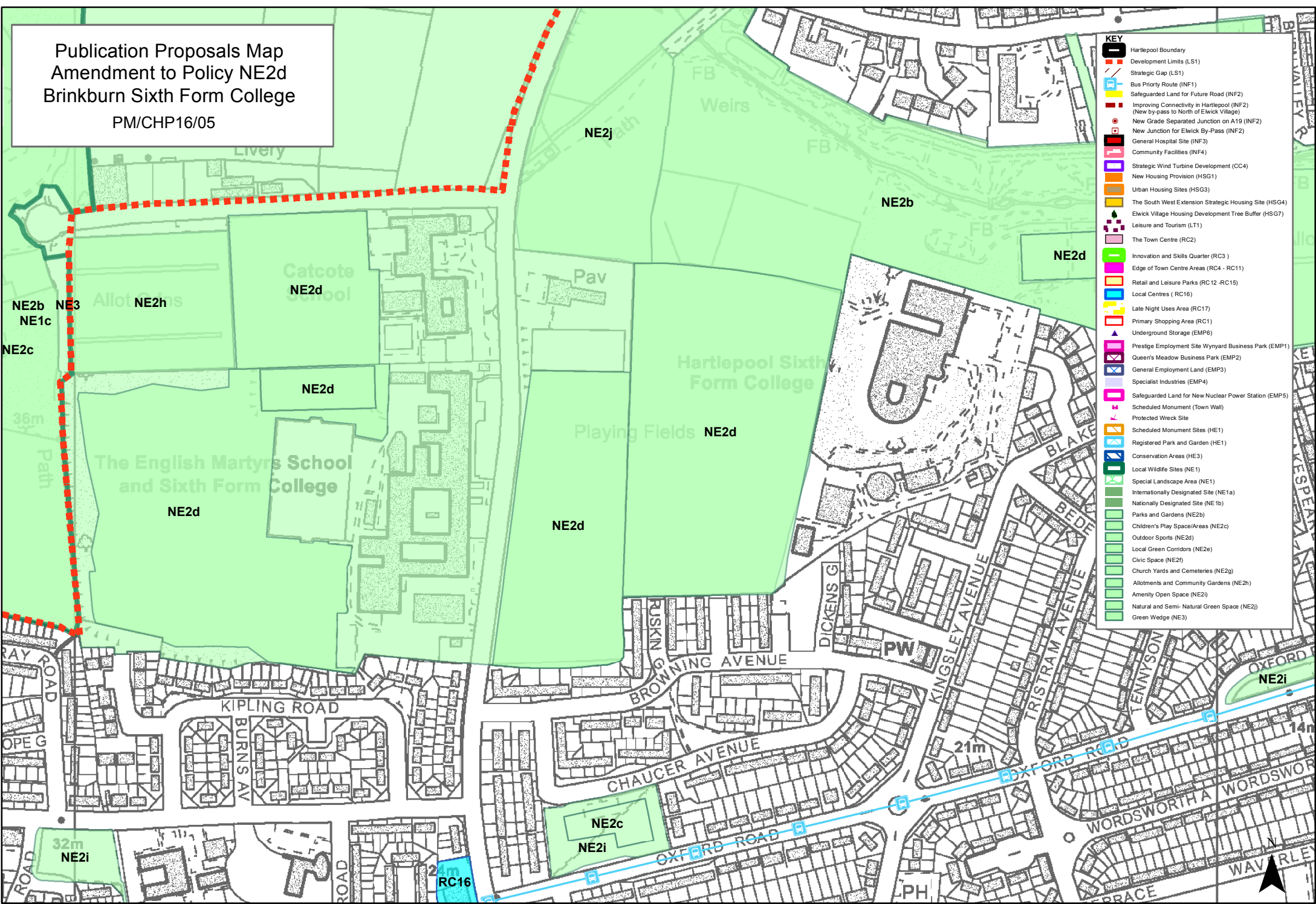
- Hartlepool Boundary
- Development Limits (LS1)
- Strategic Gap (LS1)
- Bus Priority Route (INF1)
- Safeguarded Land for Future Road (INF2)
- Improving Connectivity in Hartlepool (INF2) (New by-pass to North of Elwick Village)
- New Grade Separated Junction on A19 (INF2)
- New Junction for Elwick By-Pass (INF2)
- General Hospital Site (INF3)
- Community Facilities (INF4)
- Strategic Wind Turbine Development (CC4)
- New Housing Provision (HSG1)
- Urban Housing Sites (HSG3)
- The South West Extension Strategic Housing Site (HSG4)
- Elwick Village Housing Development Tree Buffer (HSG7)
- Leisure and Tourism (LT1)
- The Town Centre (RC2)
- Innovation and Skills Quarter (RC3)
- Edge of Town Centre Areas (RC4 - RC11)
- Retail and Leisure Parks (RC12 - RC15)
- Local Centres (RC16)
- Late Night Uses Area (RC17)
- Primary Shopping Area (RC1)
- Underground Storage (EMP6)
- Prestige Employment Site Wynyard Business Park (EMP1)
- Queen's Meadow Business Park (EMP2)
- General Employment Land (EMP3)
- Specialist Industries (EMP4)
- Safeguarded Land for New Nuclear Power Station (EMP5)
- Scheduled Monument (Town Wall)
- Protected Wreck Site
- Scheduled Monument Sites (HE1)
- Registered Park and Garden (HE1)
- Conservation Areas (HE3)
- Local Wildlife Sites (NE1)
- Special Landscape Area (NE1)
- Internationally Designated Site (NE1a)
- Nationally Designated Site (NE1b)
- Parks and Gardens (NE2b)
- Children's Play Space/Areas (NE2c)
- Outdoor Sports (NE2d)
- Local Green Corridors (NE2e)
- Civic Space (NE2f)
- Church Yards and Cemeteries (NE2g)
- Allotments and Community Gardens (NE2h)
- Amenity Open Space (NE2i)
- Natural and Semi-Natural Green Space (NE2j)
- Green Wedge (NE3)

*Publication Proposals Map  
Amendment to Policy NE2e  
East of Hunter House Industrial Estate*  
PM/CHP16/04



- KEY**
- Hartlepool Boundary
  - Development Limits (LS1)
  - Strategic Gap (LS1)
  - Bus Priority Route (INF1)
  - Safeguarded Land for Future Road (INF2)
  - Improving Connectivity in Hartlepool (INF2) (New by-pass to North of Elwick Village)
  - New Grade Separated Junction on A19 (INF2)
  - New Junction for Elwick By-Pass (INF2)
  - General Hospital Site (INF3)
  - Community Facilities (INF4)
  - Strategic Wind Turbine Development (CC4)
  - New Housing Provision (HSG1)
  - Urban Housing Sites (HSG3)
  - The South West Extension Strategic Housing Site (HSG4)
  - Elwick Village Housing Development Tree Buffer (HSG7)
  - Leisure and Tourism (LT1)
  - The Town Centre (RC2)
  - Innovation and Skills Quarter (RC3)
  - Edge of Town Centre Areas (RC4 - RC11)
  - Retail and Leisure Parks (RC12 - RC15)
  - Local Centres (RC16)
  - Late Night Uses Area (RC17)
  - Primary Shopping Area (RC1)
  - Underground Storage (EMP6)
  - Prestige Employment Site Wynyard Business Park (EMP1)
  - Queen's Meadow Business Park (EMP2)
  - General Employment Land (EMP3)
  - Specialist Industries (EMP4)
  - Safeguarded Land for New Nuclear Power Station (EMP5)
  - Scheduled Monument (Town Wall)
  - Protected Wreck Site
  - Scheduled Monument Sites (HE1)
  - Registered Park and Garden (HE1)
  - Conservation Areas (HE3)
  - Local Wildlife Sites (NE1)
  - Special Landscape Area (NE1)
  - Internationally Designated Site (NE1a)
  - Nationally Designated Site (NE1b)
  - Parks and Gardens (NE2b)
  - Children's Play Space/Areas (NE2c)
  - Outdoor Sports (NE2d)
  - Local Green Corridors (NE2e)
  - Civic Space (NE2f)
  - Church Yards and Cemeteries (NE2g)
  - Allotments and Community Gardens (NE2h)
  - Amenity Open Space (NE2i)
  - Natural and Semi-Natural Green Space (NE2j)
  - Green Wedge (NE3)

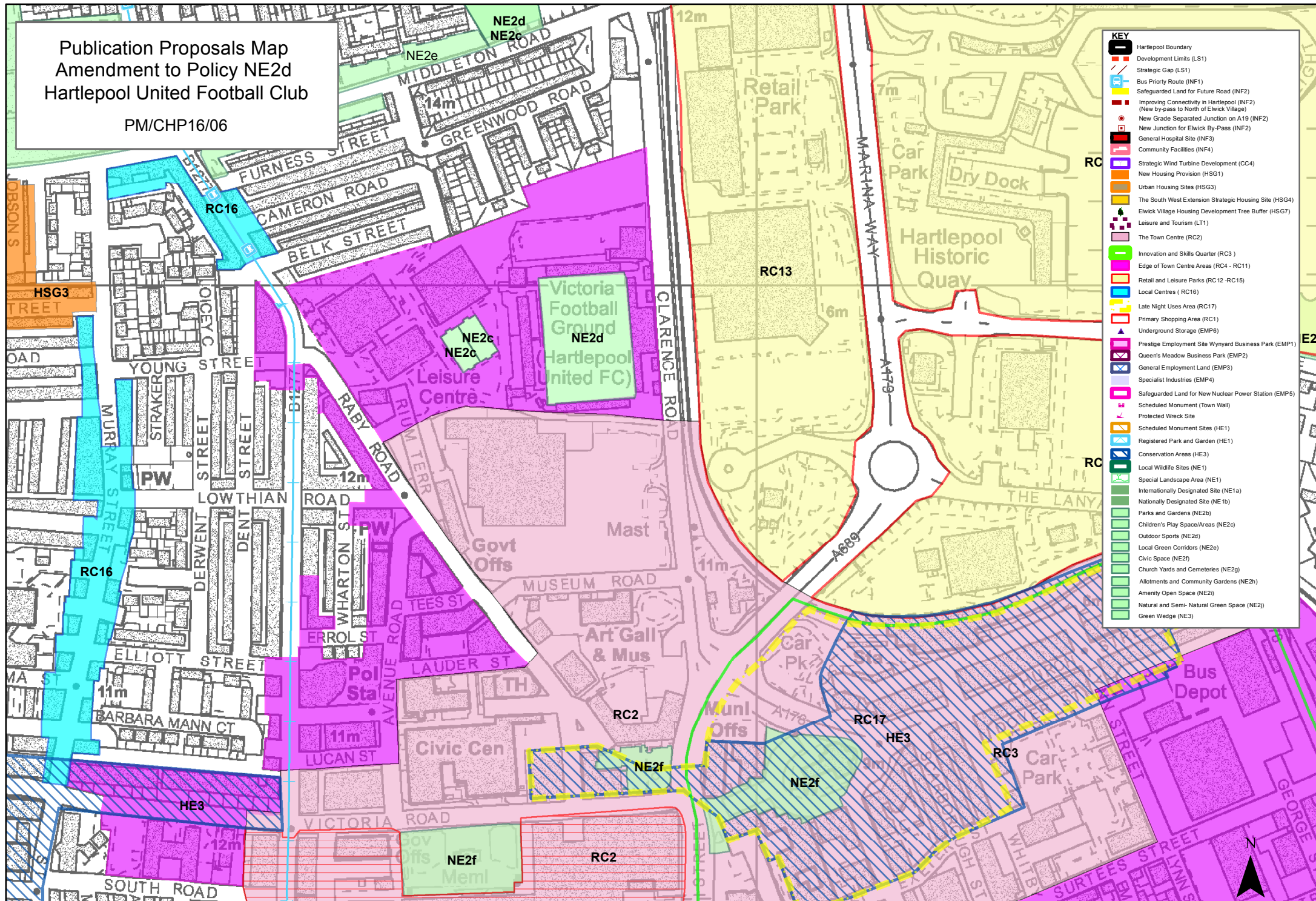
Publication Proposals Map  
 Amendment to Policy NE2d  
 Brinkburn Sixth Form College  
 PM/CHP16/05



- KEY**
- Hartlepool Boundary
  - Development Limits (LS1)
  - Strategic Gap (LS1)
  - Bus Priority Route (INF1)
  - Safeguarded Land for Future Road (INF2)
  - Improving Connectivity in Hartlepool (INF2) (New by-pass to North of Elwick Village)
  - New Grade Separated Junction on A19 (INF2)
  - New Junction for Elwick By-Pass (INF2)
  - General Hospital Site (INF3)
  - Community Facilities (INF4)
  - Strategic Wind Turbine Development (CC4)
  - New Housing Provision (HSG1)
  - Urban Housing Sites (HSG3)
  - The South West Extension Strategic Housing Site (HSG4)
  - Elwick Village Housing Development Tree Buffer (HSG7)
  - Leisure and Tourism (LT1)
  - The Town Centre (RC2)
  - Innovation and Skills Quarter (RC3)
  - Edge of Town Centre Areas (RC4 - RC11)
  - Retail and Leisure Parks (RC12-RC15)
  - Local Centres (RC16)
  - Late Night Uses Area (RC17)
  - Primary Shopping Area (RC1)
  - Underground Storage (EMP6)
  - Prestige Employment Site Wynyard Business Park (EMP1)
  - Queen's Meadow Business Park (EMP2)
  - General Employment Land (EMP3)
  - Specialist Industries (EMP4)
  - Safeguarded Land for New Nuclear Power Station (EMP5)
  - Scheduled Monument (Town Wall)
  - Protected Wreck Site
  - Scheduled Monument Sites (HE1)
  - Registered Park and Garden (HE1)
  - Conservation Areas (HE3)
  - Local Wildlife Sites (NE1)
  - Special Landscape Area (NE1)
  - Internationally Designated Site (NE1a)
  - Nationally Designated Site (NE1b)
  - Parks and Gardens (NE2b)
  - Children's Play Space/Areas (NE2c)
  - Outdoor Sports (NE2a)
  - Local Green Corridors (NE2e)
  - Civic Space (NE2f)
  - Church Yards and Cemeteries (NE2g)
  - Allotments and Community Gardens (NE2h)
  - Amenity Open Space (NE2i)
  - Natural and Semi-Natural Green Space (NE2j)
  - Green Wedge (NE3)

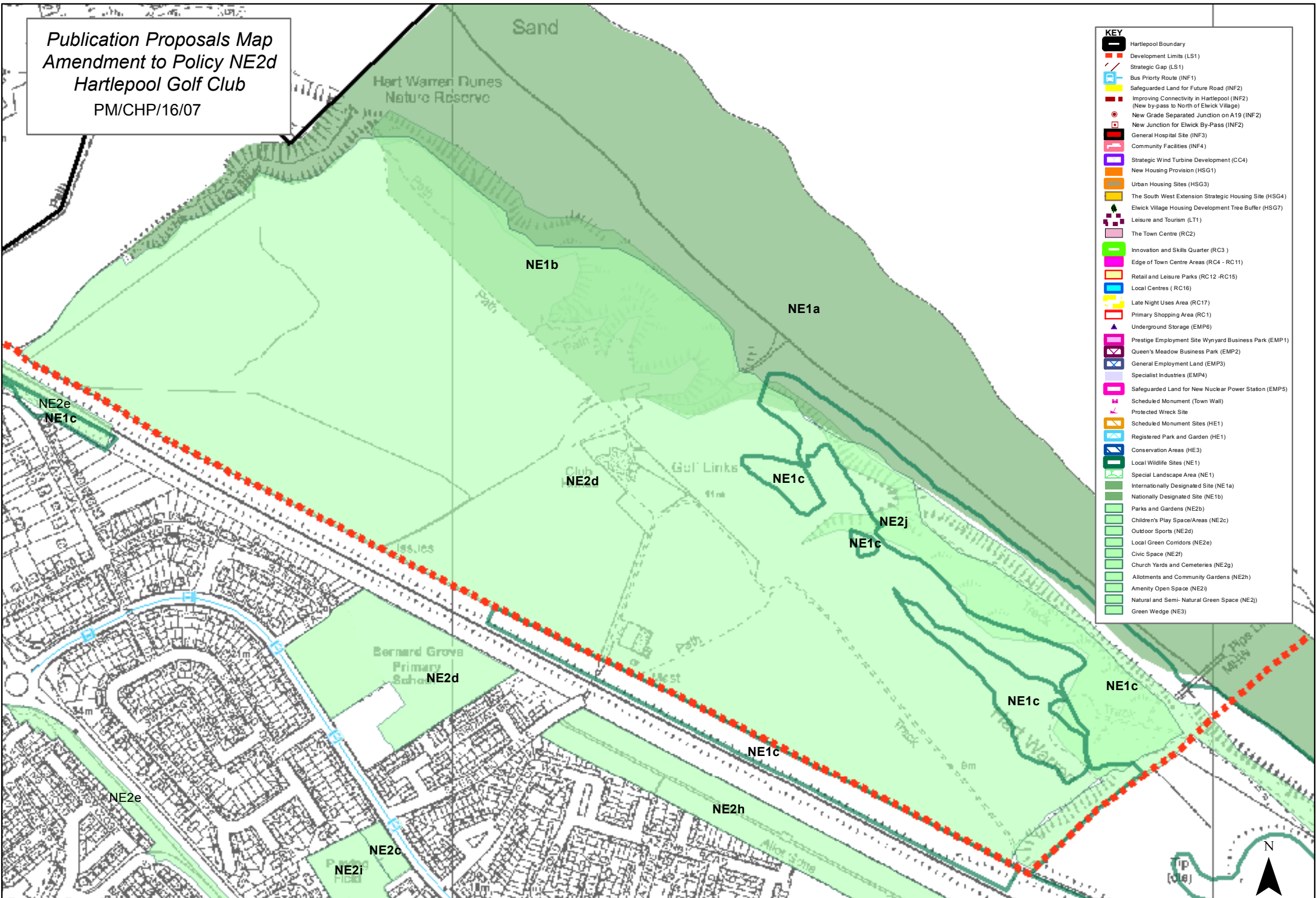
Publication Proposals Map  
Amendment to Policy NE2d  
Hartlepool United Football Club

PM/CHP16/06



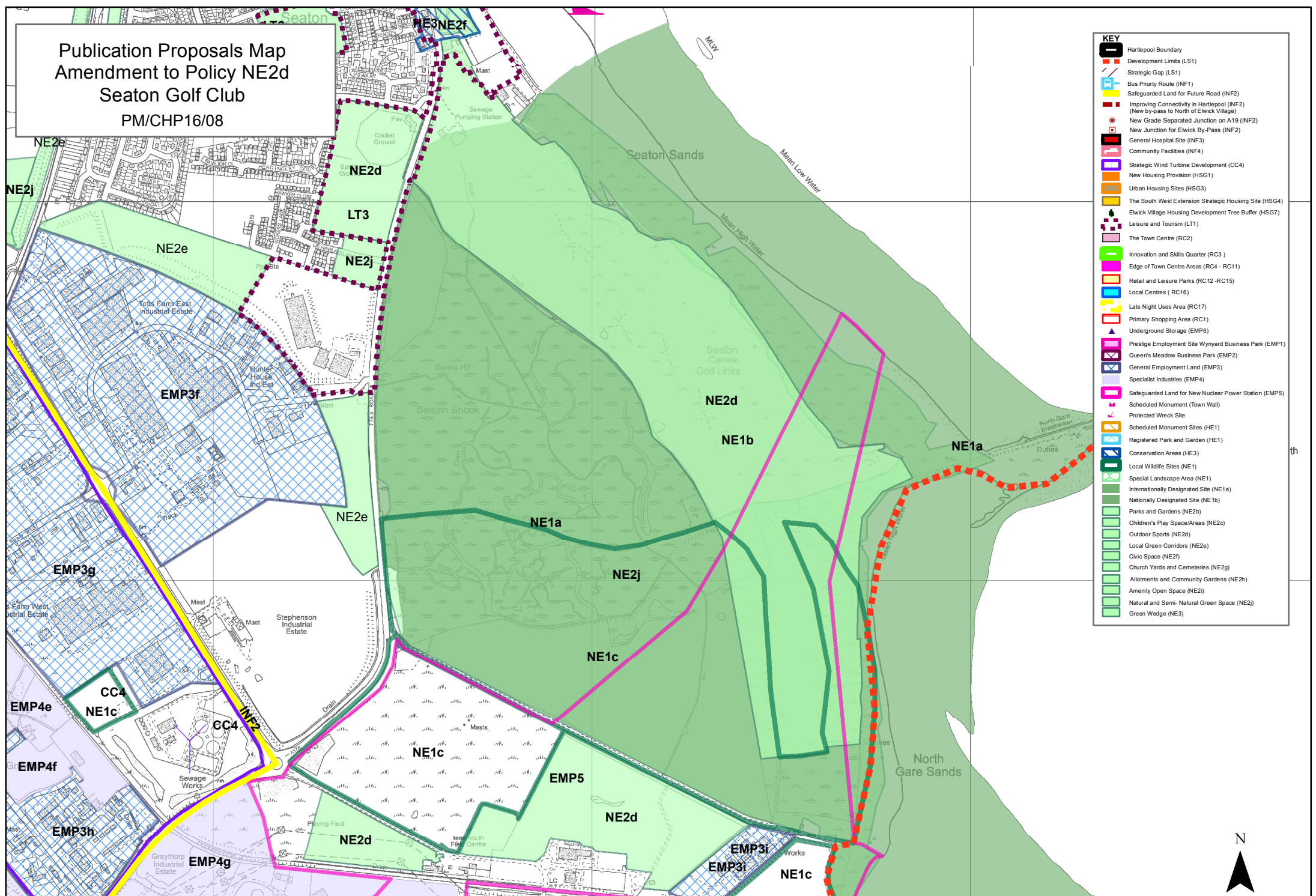
KEY	Description
[Red dashed line]	Hartlepool Boundary
[Red solid line]	Development Limits (LS1)
[Red dashed line]	Strategic Gap (LS1)
[Blue line with 'B']	Bus Priority Route (INF1)
[Yellow line]	Safeguarded Land for Future Road (INF2)
[Red dashed line]	Improving Connectivity in Hartlepool (INF2)
[Red dashed line]	(New by-pass to North of Elwick Village)
[Red dashed line]	New Grade Separated Junction on A19 (INF2)
[Red dashed line]	New Junction for Elwick By-Pass (INF2)
[Red dashed line]	General Hospital Site (INF3)
[Red dashed line]	Community Facilities (INF4)
[Red dashed line]	Strategic Wind Turbine Development (CC4)
[Red dashed line]	New Housing Provision (HSG1)
[Orange square]	Urban Housing Sites (HSG3)
[Green square]	The South West Extension Strategic Housing Site (HSG4)
[Green square]	Elwick Village Housing Development Tree Buffer (HSG7)
[Green square]	Leisure and Tourism (LT1)
[Green square]	The Town Centre (RC2)
[Green square]	Innovation and Skills Quarter (RC3)
[Green square]	Edge of Town Centre Areas (RC4 - RC11)
[Green square]	Retail and Leisure Parks (RC12-RC15)
[Green square]	Local Centres (RC16)
[Green square]	Late Night Uses Area (RC17)
[Green square]	Primary Shopping Area (RC1)
[Green square]	Underground Storage (EMP6)
[Green square]	Prestige Employment Site Wynyard Business Park (EMP1)
[Green square]	Queen's Meadow Business Park (EMP2)
[Green square]	General Employment Land (EMP3)
[Green square]	Specialist Industries (EMP4)
[Green square]	Safeguarded Land for New Nuclear Power Station (EMP5)
[Green square]	Scheduled Monument (Town Wall)
[Green square]	Protected Wreck Site
[Green square]	Scheduled Monument Sites (HE1)
[Green square]	Registered Park and Garden (HE1)
[Green square]	Conservation Areas (HE3)
[Green square]	Local Wildlife Sites (NE1)
[Green square]	Special Landscape Area (NE1)
[Green square]	Internationally Designated Site (NE1a)
[Green square]	Nationally Designated Site (NE1b)
[Green square]	Parks and Gardens (NE2b)
[Green square]	Children's Play Space/Areas (NE2c)
[Green square]	Outdoor Sports (NE2d)
[Green square]	Local Green Corridors (NE2e)
[Green square]	Civic Space (NE2f)
[Green square]	Church Yards and Cemeteries (NE2g)
[Green square]	Allotments and Community Gardens (NE2h)
[Green square]	Amenity Open Space (NE2i)
[Green square]	Natural and Semi-Natural Green Space (NE2j)
[Green square]	Green Wedge (NE3)

*Publication Proposals Map  
Amendment to Policy NE2d  
Hartlepool Golf Club  
PM/CHP/16/07*



- KEY**
- Hartlepool Boundary
  - Development Limits (LS1)
  - Strategic Gap (LS1)
  - Bus Priority Route (INF1)
  - Safeguarded Land for Future Road (INF2)
  - Improving Connectivity in Hartlepool (INF2) (New by-pass to North of Elwick Village)
  - New Grade Separated Junction on A19 (INF2)
  - New Junction for Elwick By-Pass (INF2)
  - General Hospital Site (INF3)
  - Community Facilities (INF4)
  - Strategic Wind Turbine Development (CC4)
  - New Housing Provision (HSG1)
  - Urban Housing Sites (HSG3)
  - The South West Extension Strategic Housing Site (HSG4)
  - Elwick Village Housing Development Tree Buffer (HSG7)
  - Leisure and Tourism (LT1)
  - The Town Centre (RC2)
  - Innovation and Skills Quarter (RC3)
  - Edge of Town Centre Areas (RC4 - RC11)
  - Retail and Leisure Parks (RC12-RC15)
  - Local Centres (RC16)
  - Late Night Uses Area (RC17)
  - Primary Shopping Area (RC1)
  - Underground Storage (EMP6)
  - Prestige Employment Site Wynyard Business Park (EMP1)
  - Queen's Meadow Business Park (EMP2)
  - General Employment Land (EMP3)
  - Specialist Industries (EMP4)
  - Safeguarded Land for New Nuclear Power Station (EMP5)
  - Scheduled Monument (Town Wall)
  - Protected Wreck Site
  - Scheduled Monument Sites (HE1)
  - Registered Park and Garden (HE1)
  - Conservation Areas (HE3)
  - Local Wildlife Sites (NE1)
  - Special Landscape Area (NE1)
  - Internationally Designated Site (NE1a)
  - Nationally Designated Site (NE1b)
  - Parks and Gardens (NE2b)
  - Children's Play Space/Areas (NE2c)
  - Outdoor Sports (NE2d)
  - Local Green Corridors (NE2e)
  - Civic Space (NE2f)
  - Church Yards and Cemeteries (NE2g)
  - Allotments and Community Gardens (NE2h)
  - Amenity Open Space (NE2i)
  - Natural and Semi-Natural Green Space (NE2j)
  - Green Wedge (NE3)

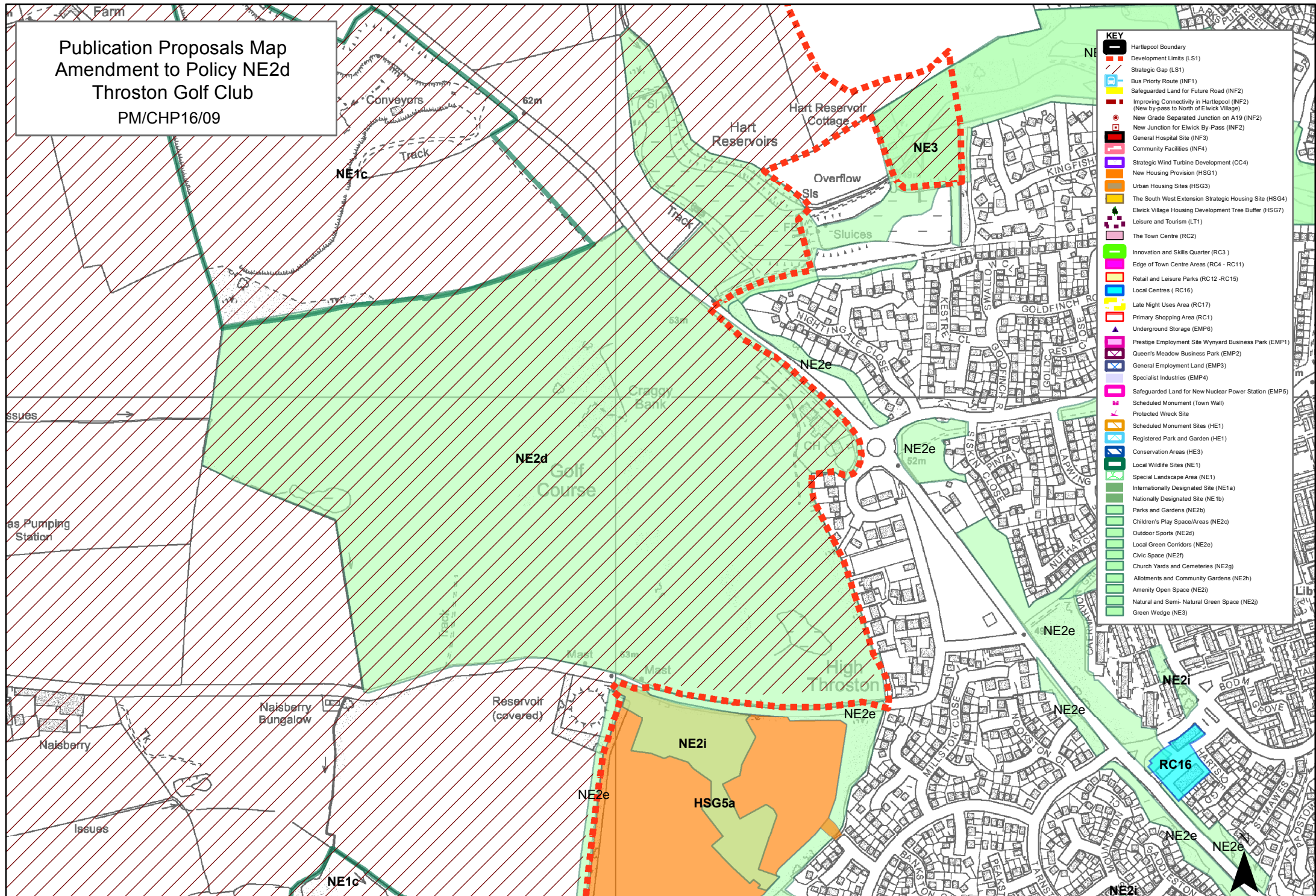
Publication Proposals Map  
Amendment to Policy NE2d  
Seaton Golf Club  
PM/CHP16/08



- KEY**
- Hartlepool Boundary
  - Development Limits (LS1)
  - Strategic Gap (LS1)
  - Bus Priority Route (INF1)
  - Safeguarded Land for Future Road (INF2)
  - Improving Connectivity in Hartlepool (INF2) (New by-pass to North of Elwick Village)
  - New Grade Separated Junction on A19 (INF2)
  - New Junction for Elwick By-Pass (INF2)
  - General Hospital Site (INF3)
  - Community Facilities (INF4)
  - Strategic Wind Turbine Development (CC4)
  - New Housing Provision (HSG1)
  - Urban Housing Sites (HSG3)
  - The South West Extension Strategic Housing Site (HSG4)
  - Elwick Village Housing Development Tree Buffer (HSG7)
  - Leisure and Tourism (LT1)
  - The Town Centre (RC2)
  - Innovation and Skills Quarter (RC3)
  - Edge of Town Centre Areas (RC4 - RC11)
  - Retail and Leisure Parks (RC12 - RC15)
  - Local Centres (RC16)
  - Late Night Uses Area (RC17)
  - Primary Shopping Area (RC1)
  - Underground Storage (EMP6)
  - Prestige Employment Site Wynyard Business Park (EMP1)
  - Queen's Meadow Business Park (EMP2)
  - General Employment Land (EMP3)
  - Specialist Industries (EMP4)
  - Safeguarded Land for New Nuclear Power Station (EMP5)
  - Scheduled Monument (Town Wall)
  - Protected Wreck Site
  - Scheduled Monument Sites (HE1)
  - Registered Park and Garden (HE1)
  - Conservation Areas (HE3)
  - Local Wildlife Sites (NE1)
  - Special Landscape Area (NE1)
  - Internationally Designated Site (NE1a)
  - Nationally Designated Site (NE1b)
  - Parks and Gardens (NE2b)
  - Children's Play Space/Areas (NE2c)
  - Outdoor Sports (NE2d)
  - Local Green Corridors (NE2e)
  - Civic Space (NE2f)
  - Church Yards and Cemeteries (NE2g)
  - Allotments and Community Gardens (NE2h)
  - Amenity Open Space (NE2i)
  - Natural and Semi-Natural Green Space (NE2j)
  - Green Wedge (NE3)

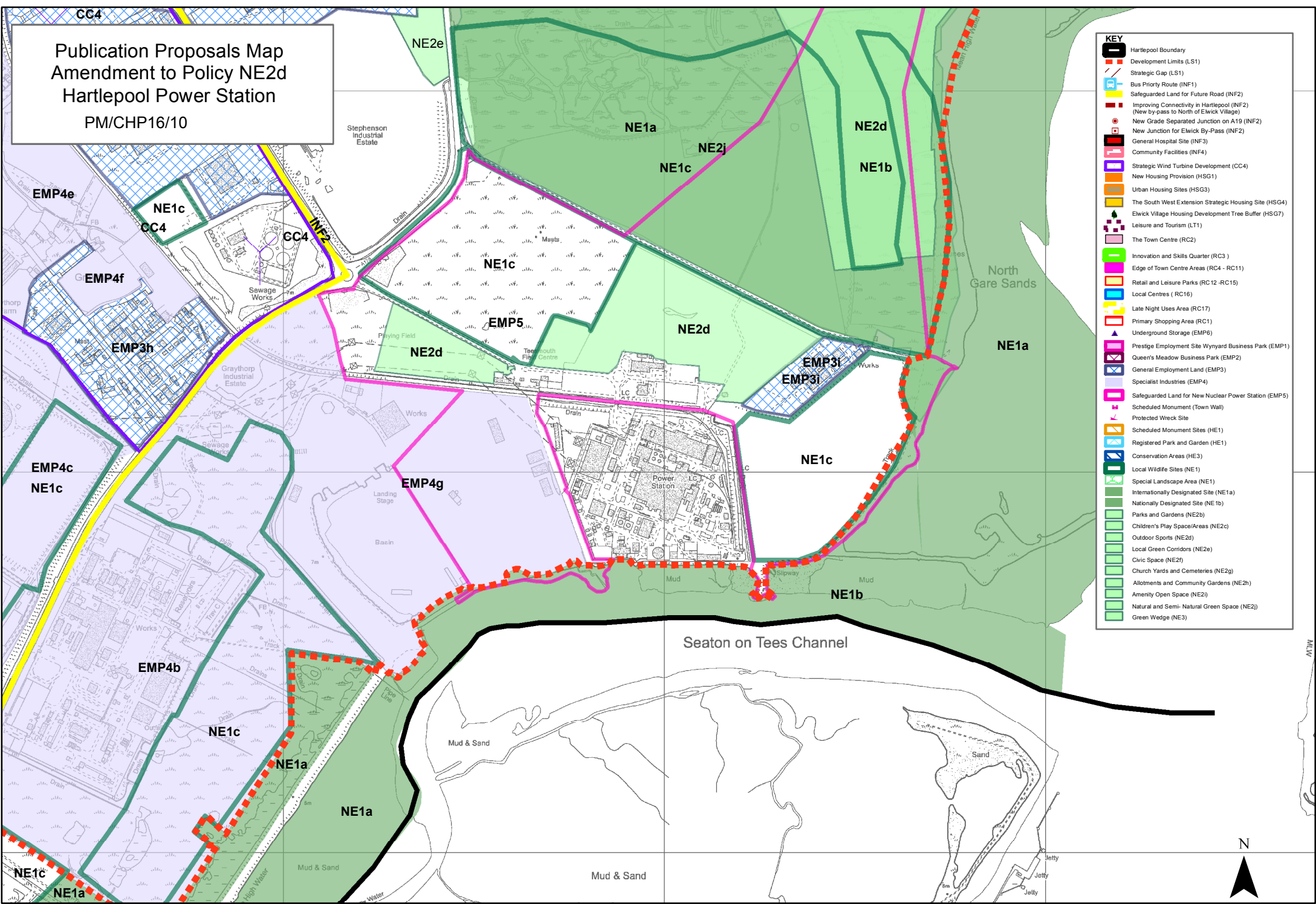


Publication Proposals Map  
Amendment to Policy NE2d  
Throston Golf Club  
PM/CHP16/09



- KEY**
- Hartlepool Boundary
  - Development Limits (LS1)
  - Strategic Gap (LS1)
  - Bus Priority Route (INF1)
  - Safeguarded Land for Future Road (INF2)
  - Improving Connectivity in Hartlepool (INF2) (New by-pass to North of Elwick Village)
  - New Grade Separated Junction on A19 (INF2)
  - New Junction for Elwick By-Pass (INF2)
  - General Hospital Site (INF3)
  - Community Facilities (INF4)
  - Strategic Wind Turbine Development (CC4)
  - New Housing Provision (HSG1)
  - Urban Housing Sites (HSG3)
  - The South West Extension Strategic Housing Site (HSG4)
  - Elwick Village Housing Development Tree Buffer (HSG7)
  - Leisure and Tourism (LT1)
  - The Town Centre (RC2)
  - Innovation and Skills Quarter (RC3)
  - Edge of Town Centre Areas (RC4 - RC11)
  - Retail and Leisure Parks (RC12 - RC15)
  - Local Centres (RC16)
  - Late Night Uses Area (RC17)
  - Primary Shopping Area (RC1)
  - Underground Storage (EMP6)
  - Prestige Employment Site Wynyard Business Park (EMP1)
  - Queen's Meadow Business Park (EMP2)
  - General Employment Land (EMP3)
  - Specialist Industries (EMP4)
  - Safeguarded Land for New Nuclear Power Station (EMP5)
  - Scheduled Monument (Town Wall)
  - Protected Wreck Site
  - Scheduled Monument Sites (HE1)
  - Registered Park and Garden (HE1)
  - Conservation Areas (HE3)
  - Local Wildlife Sites (NE1)
  - Special Landscape Area (NE1)
  - Internationally Designated Site (NE1a)
  - Nationally Designated Site (NE1b)
  - Parks and Gardens (NE2b)
  - Children's Play Space/Areas (NE2c)
  - Outdoor Sports (NE2d)
  - Local Green Corridors (NE2e)
  - Civic Space (NE2f)
  - Church Yards and Cemeteries (NE2g)
  - Allotments and Community Gardens (NE2h)
  - Amenity Open Space (NE2i)
  - Natural and Semi-Natural Green Space (NE2j)
  - Green Wedge (NE3)

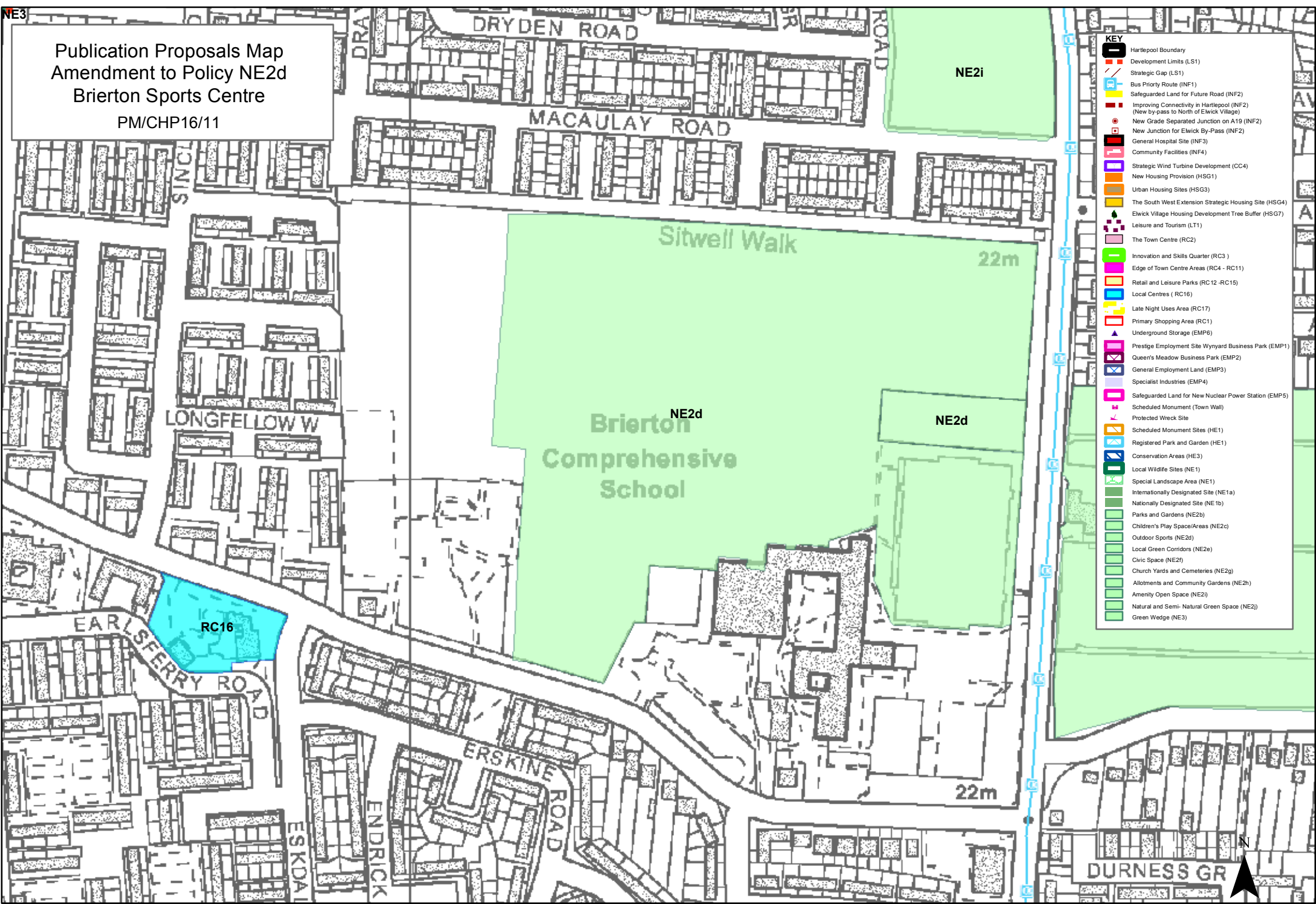
Publication Proposals Map  
Amendment to Policy NE2d  
Hartlepool Power Station  
PM/CHP16/10



KEY	
	Hartlepool Boundary
	Development Limits (LS1)
	Strategic Gap (LS1)
	Bus Priority Route (INF1)
	Safeguarded Land for Future Road (INF2)
	Improving Connectivity in Hartlepool (INF2) (New by-pass to North of Elwick Village)
	New Grade Separated Junction on A19 (INF2)
	New Junction for Elwick By-Pass (INF2)
	General Hospital Site (INF3)
	Community Facilities (INF4)
	Strategic Wind Turbine Development (CC4)
	New Housing Provision (HSG1)
	Urban Housing Sites (HSG3)
	The South West Extension Strategic Housing Site (HSG4)
	Elwick Village Housing Development Tree Buffer (HSG7)
	Leisure and Tourism (LT1)
	The Town Centre (RC2)
	Innovation and Skills Quarter (RC3)
	Edge of Town Centre Areas (RC4 - RC11)
	Retail and Leisure Parks (RC12 - RC15)
	Local Centres (RC16)
	Late Night Uses Area (RC17)
	Primary Shopping Area (RC1)
	Underground Storage (EMP6)
	Prestige Employment Site Wynyard Business Park (EMP1)
	Queen's Meadow Business Park (EMP2)
	General Employment Land (EMP3)
	Specialist Industries (EMP4)
	Safeguarded Land for New Nuclear Power Station (EMP5)
	Scheduled Monument (Town Wall)
	Protected Wreck Site
	Scheduled Monument Sites (HE1)
	Registered Park and Garden (HE1)
	Conservation Areas (HE3)
	Local Wildlife Sites (NE1)
	Special Landscape Area (NE1)
	Internationally Designated Site (NE1a)
	Nationally Designated Site (NE1b)
	Parks and Gardens (NE2b)
	Children's Play Space/Areas (NE2c)
	Outdoor Sports (NE2a)
	Local Green Corridors (NE2e)
	Civic Space (NE2f)
	Church Yards and Cemeteries (NE2g)
	Allotments and Community Gardens (NE2h)
	Amenity Open Space (NE2i)
	Natural and Semi-Natural Green Space (NE2j)
	Green Wedge (NE3)

NE3

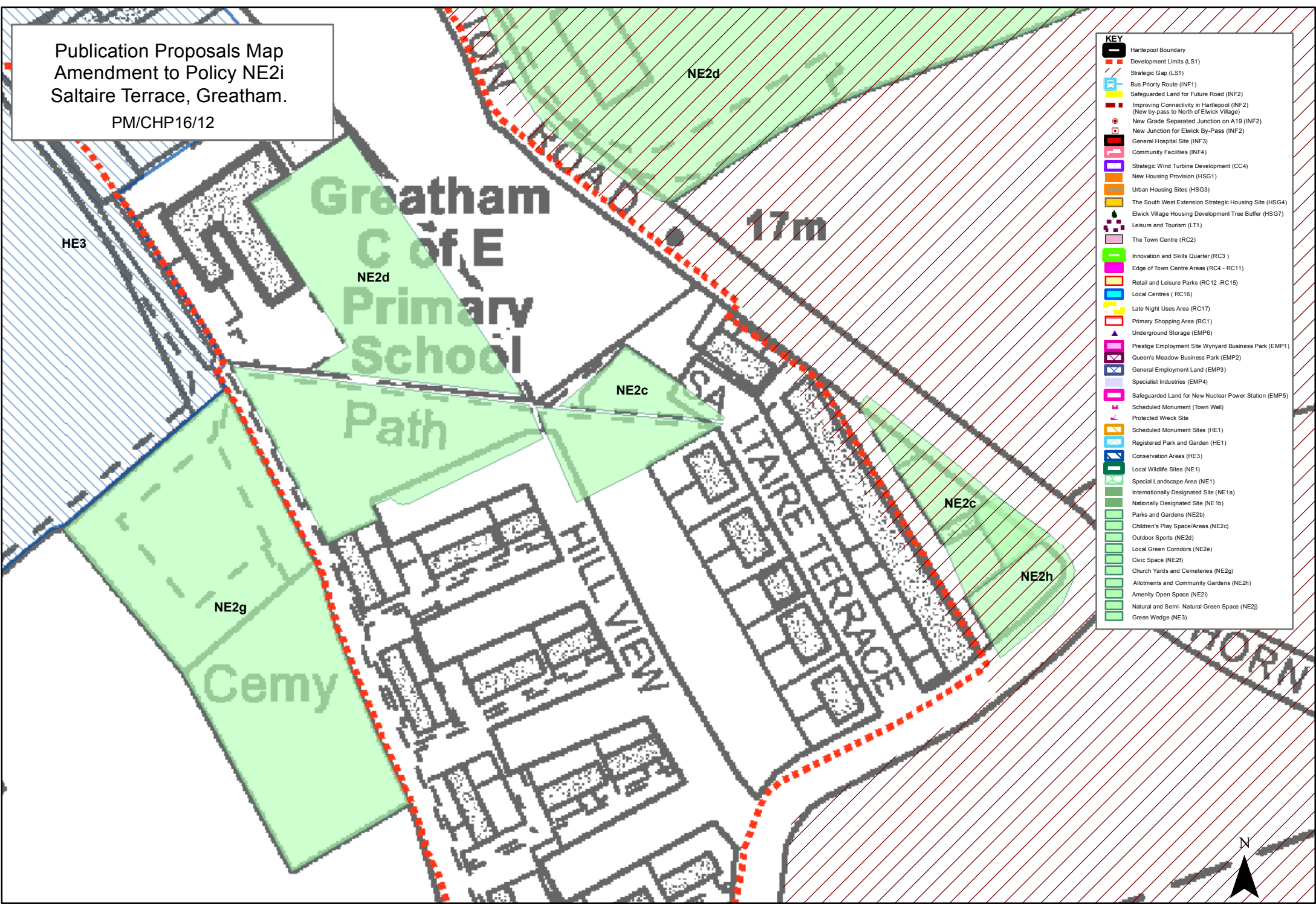
Publication Proposals Map  
 Amendment to Policy NE2d  
 Brierton Sports Centre  
 PM/CHP16/11



- KEY**
- Hartlepool Boundary
  - Development Limits (LS1)
  - Strategic Gap (LS1)
  - Bus Priority Route (INF1)
  - Safeguarded Land for Future Road (INF2)
  - Improving Connectivity in Hartlepool (INF2)
  - New by-pass to North of Elwick Village (INF2)
  - New Grade Separated Junction on A19 (INF2)
  - New Junction for Elwick By-Pass (INF2)
  - General Hospital Site (INF3)
  - Community Facilities (INF4)
  - Strategic Wind Turbine Development (CC4)
  - New Housing Provision (HSG1)
  - Urban Housing Sites (HSG3)
  - The South West Extension Strategic Housing Site (HSG4)
  - Elwick Village Housing Development Tree Buffer (HSG7)
  - Leisure and Tourism (LT1)
  - The Town Centre (RC2)
  - Innovation and Skills Quarter (RC3)
  - Edge of Town Centre Areas (RC4 - RC11)
  - Retail and Leisure Parks (RC12 - RC15)
  - Local Centres ( RC16)
  - Late Night Uses Area (RC17)
  - Primary Shopping Area (RC1)
  - Underground Storage (EMP6)
  - Prestige Employment Site Wynyard Business Park (EMP1)
  - Queen's Meadow Business Park (EMP2)
  - General Employment Land (EMP3)
  - Specialist Industries (EMP4)
  - Safeguarded Land for New Nuclear Power Station (EMP5)
  - Scheduled Monument (Town Wall)
  - Protected Wreck Site
  - Scheduled Monument Sites (HE1)
  - Registered Park and Garden (HE1)
  - Conservation Areas (HE3)
  - Local Wildlife Sites (NE1)
  - Special Landscape Area (NE1)
  - Internationally Designated Site (NE1a)
  - Nationally Designated Site (NE1b)
  - Parks and Gardens (NE2b)
  - Children's Play Space/Areas (NE2c)
  - Outdoor Sports (NE2d)
  - Local Green Corridors (NE2e)
  - Civic Space (NE2f)
  - Church Yards and Cemeteries (NE2g)
  - Allotments and Community Gardens (NE2h)
  - Amenity Open Space (NE2i)
  - Natural and Semi- Natural Green Space (NE2j)
  - Green Wedge (NE3)

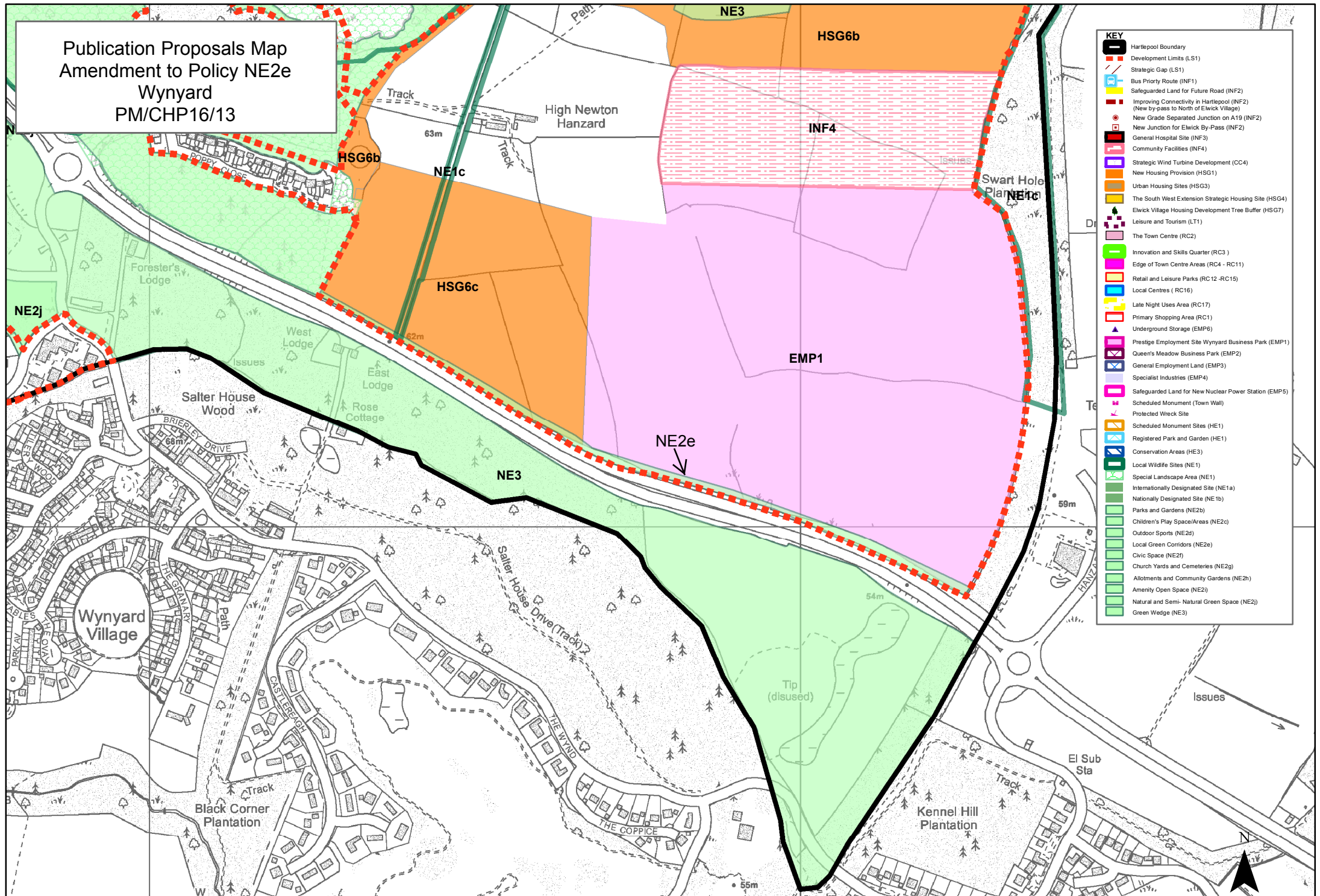
Publication Proposals Map  
Amendment to Policy NE2i  
Saltaire Terrace, Greatham.

PM/CHP16/12



KEY	
	Hartlepool Boundary
	Development Limits (LS1)
	Strategic Gap (LS1)
	Bus Priority Route (INF1)
	Safeguarded Land for Future Road (INF2)
	Improving Connectivity in Hartlepool (INF2) (New by-pass to North of Elwick Village)
	New Grade Separated Junction on A19 (INF2)
	New Junction for Elwick By-Pass (INF2)
	General Hospital Site (INF3)
	Community Facilities (INF4)
	Strategic Wind Turbine Development (CC4)
	New Housing Provision (HSG1)
	Urban Housing Sites (HSG3)
	The South West Extension Strategic Housing Site (HSG4)
	Elwick Village Housing Development Tree Buffer (HSG7)
	Leisure and Tourism (LT1)
	The Town Centre (RC2)
	Innovation and Skills Quarter (RC3)
	Edge of Town Centre Areas (RC4 - RC11)
	Retail and Leisure Parks (RC12 - RC15)
	Local Centres (RC16)
	Late Night Uses Area (RC17)
	Primary Shopping Area (RC1)
	Underground Storage (EMP6)
	Prestige Employment Site Wynyard Business Park (EMP1)
	Queen's Meadow Business Park (EMP2)
	General Employment Land (EMP3)
	Specialist Industries (EMP4)
	Safeguarded Land for New Nuclear Power Station (EMP5)
	Scheduled Monument (Town Wall)
	Protected Wreck Site
	Scheduled Monument Sites (HE1)
	Registered Park and Garden (HE1)
	Conservation Areas (HE3)
	Local Wildlife Sites (NE1)
	Special Landscape Area (NE1)
	Internationally Designated Site (NE1a)
	Nationally Designated Site (NE1b)
	Parks and Gardens (NE2b)
	Children's Play Space/Areas (NE2c)
	Outdoor Sports (NE2d)
	Local Green Corridors (NE2e)
	Civic Space (NE2f)
	Church Yards and Cemeteries (NE2g)
	Allotments and Community Gardens (NE2h)
	Amenity Open Space (NE2i)
	Natural and Semi-Natural Green Space (NE2j)
	Green Wedge (NE3)

Publication Proposals Map  
Amendment to Policy NE2e  
Wynyard  
PM/CHP16/13



KEY	
	Hartlepool Boundary
	Development Limits (LS1)
	Strategic Gap (LS1)
	Bus Priority Route (INF1)
	Safeguarded Land for Future Road (INF2)
	Improving Connectivity in Hartlepool (INF2) (New by-pass to North of Elwick Village)
	New Gated Separated Junction on A19 (INF2)
	New Junction for Elwick By-Pass (INF2)
	General Hospital Site (INF3)
	Community Facilities (INF4)
	Strategic Wind Turbine Development (CC4)
	New Housing Provision (HSG1)
	Urban Housing Sites (HSG3)
	The South West Extension Strategic Housing Site (HSG4)
	Elwick Village Housing Development Tree Buffer (HSG7)
	Leisure and Tourism (LT1)
	The Town Centre (RC2)
	Innovation and Skills Quarter (RC3)
	Edge of Town Centre Areas (RC4 - RC11)
	Retail and Leisure Parks (RC12 - RC15)
	Local Centres (RC16)
	Late Night Uses Area (RC17)
	Primary Shopping Area (RC1)
	Underground Storage (EMP6)
	Prestige Employment Site Wynyard Business Park (EMP1)
	Queen's Meadow Business Park (EMP2)
	General Employment Land (EMP3)
	Specialist Industries (EMP4)
	Safeguarded Land for New Nuclear Power Station (EMP5)
	Scheduled Monument (Town Wall)
	Protected Wreck Site
	Scheduled Monument Sites (HE1)
	Registered Park and Garden (HE1)
	Conservation Areas (HE3)
	Local Wildlife Sites (NE1)
	Special Landscape Area (NE1)
	Internationally Designated Site (NE1a)
	Nationally Designated Site (NE1b)
	Parks and Gardens (NE2b)
	Children's Play Space/Areas (NE2c)
	Outdoor Sports (NE2d)
	Local Green Corridors (NE2e)
	Civic Space (NE2f)
	Church Yards and Cemeteries (NE2g)
	Allotments and Community Gardens (NE2h)
	Amenity Open Space (NE2i)
	Natural and Semi-Natural Green Space (NE2j)
	Green Wedge (NE3)