



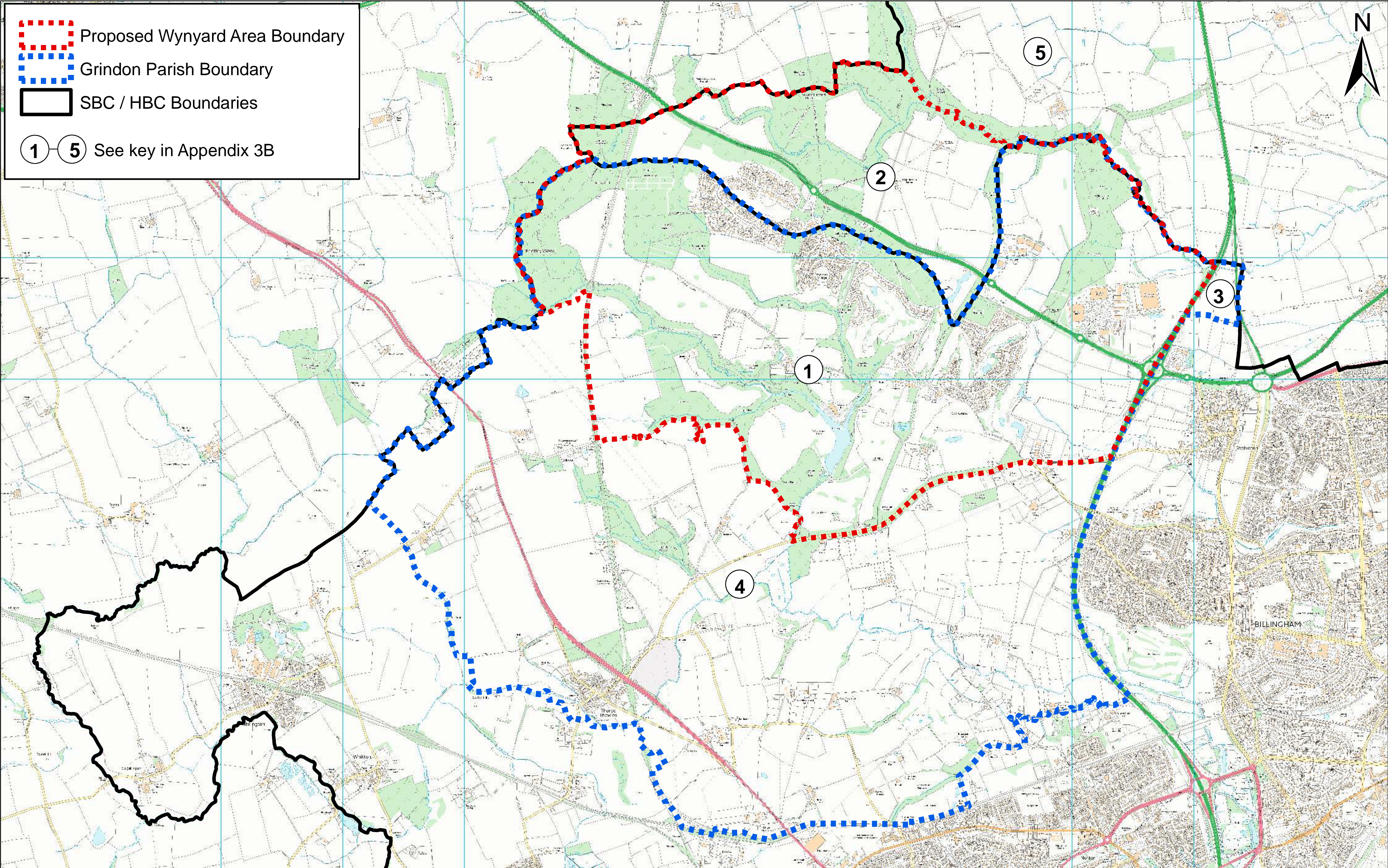
 Proposed Wynyard Area Boundary  
 Grindon Parish Boundary  
 SBC / HBC Boundaries  
  See key in Appendix 3B



  
**Stockton-on-Tees**  
 BOROUGH COUNCIL

Development & Neighbourhood Services  
 Corporate Director: P Dobson  
 Head of Planning: C Straughan  
 Gloucester House, Church Road,  
 Stockton on Tees. TS18 1TW, Telephone: (01642) 393939

This map is reproduced from Ordnance Survey material with the permission of Ordnance Survey on behalf of the Controller of Her Majesty's Stationery Office. © Crown copyright.

Unauthorised reproduction infringes Crown copyright and may lead to prosecution or civil proceedings.  
 Stockton-on-Tees Borough Council 100023297 2010

Date:  
 August 2013

Scale:  
 Not to scale

Title and Reference Number: **Appendix 3a : Explanatory Map - Wynyard Neighbourhood Area Boundary in the context of Grindon & Elwick Parishes & the Borough boundaries.**