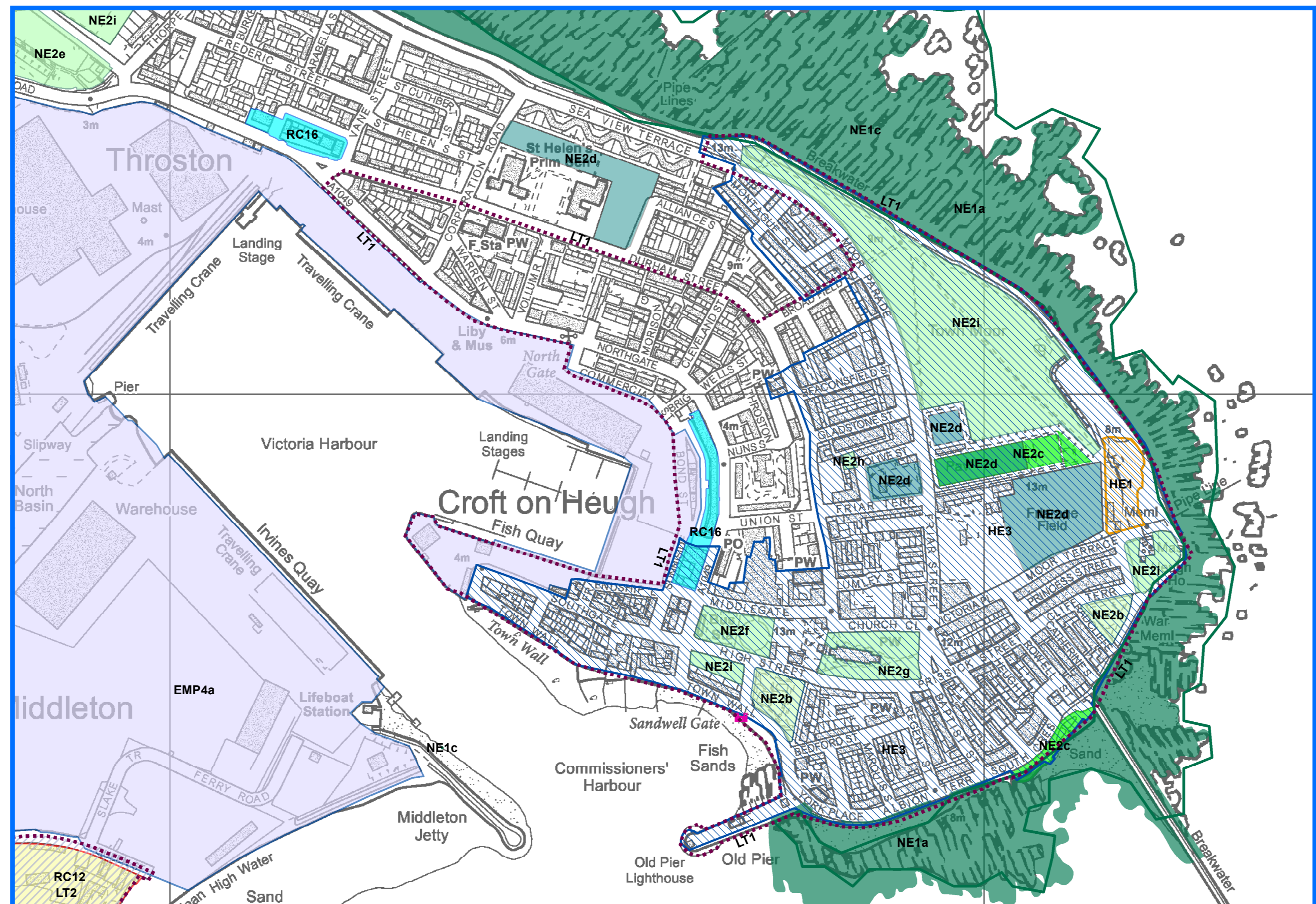
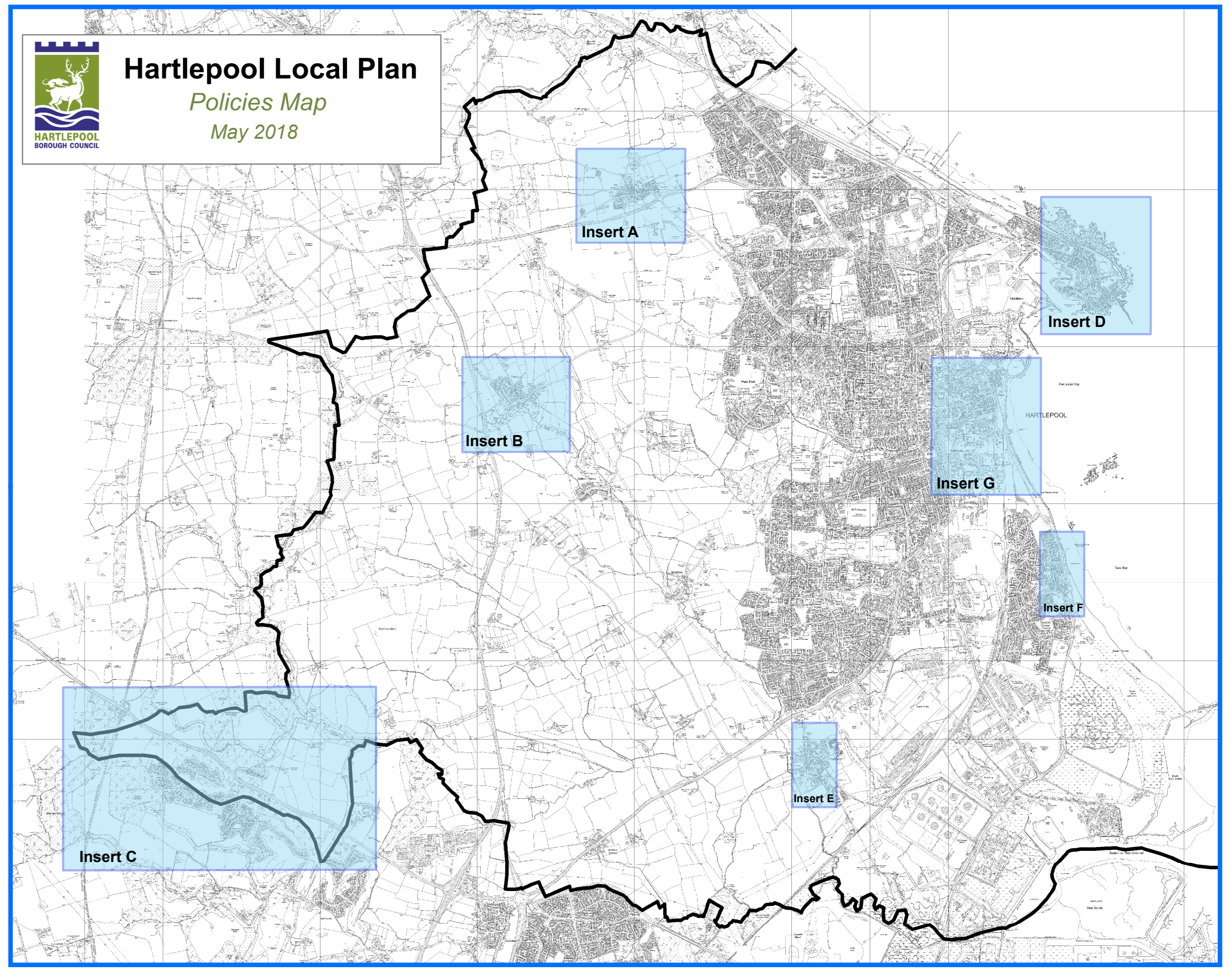


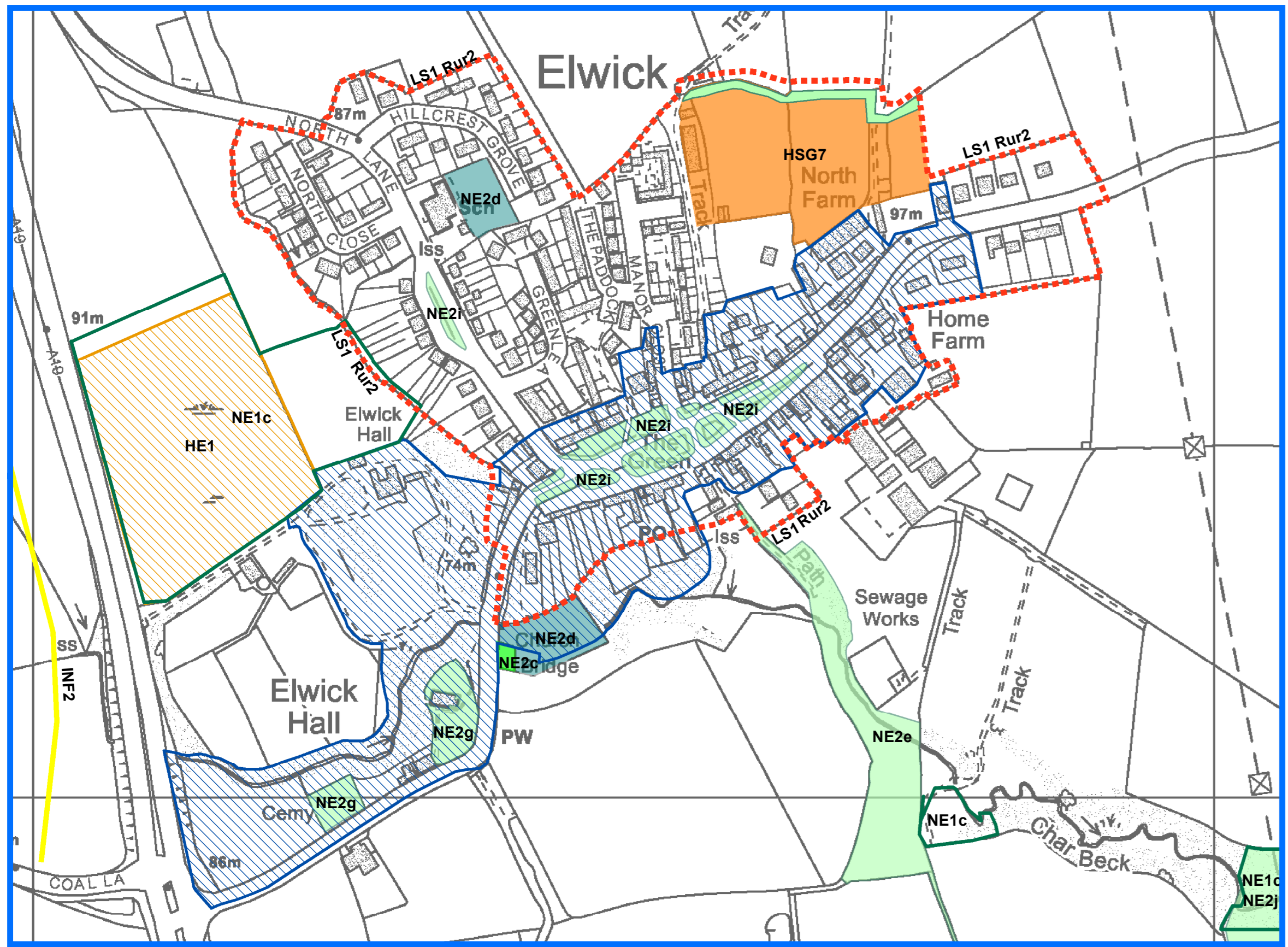
Insert A Hart Village - Scale 1:3,500



Insert D Headland - Scale 1:4,000



Insert Map Scale 1:40,000



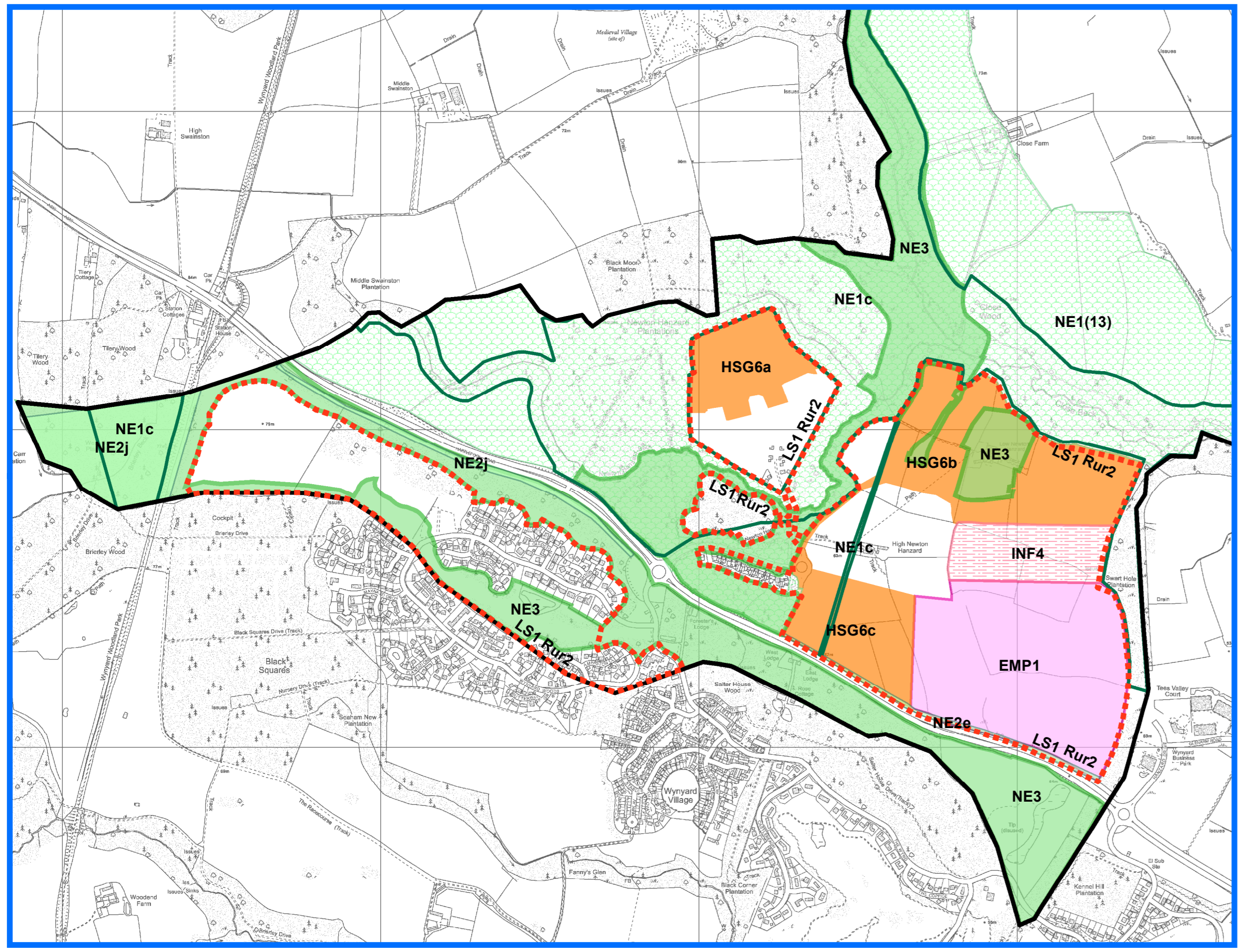
Insert B Elwick Village - Scale 1:3,500

- KEY**
- Hartlepool Boundary
 - Development Limits (LS1) (Rur2)
 - Strategic Gap (LS1)
 - Bus Priority Route (INF1)
 - Safeguarded Land for Future Road Schemes (INF2)
 - Improving Connectivity in Hartlepool (INF2) (New by-pass to North of Elwick Village)
 - New Grade Separated Junction on A19 (INF2)
 - New Junction for Elwick By-Pass (INF2)
 - General Hospital Site (INF3)
 - Community Facilities (INF4)
 - Strategic Wind Turbine Development (CC4)

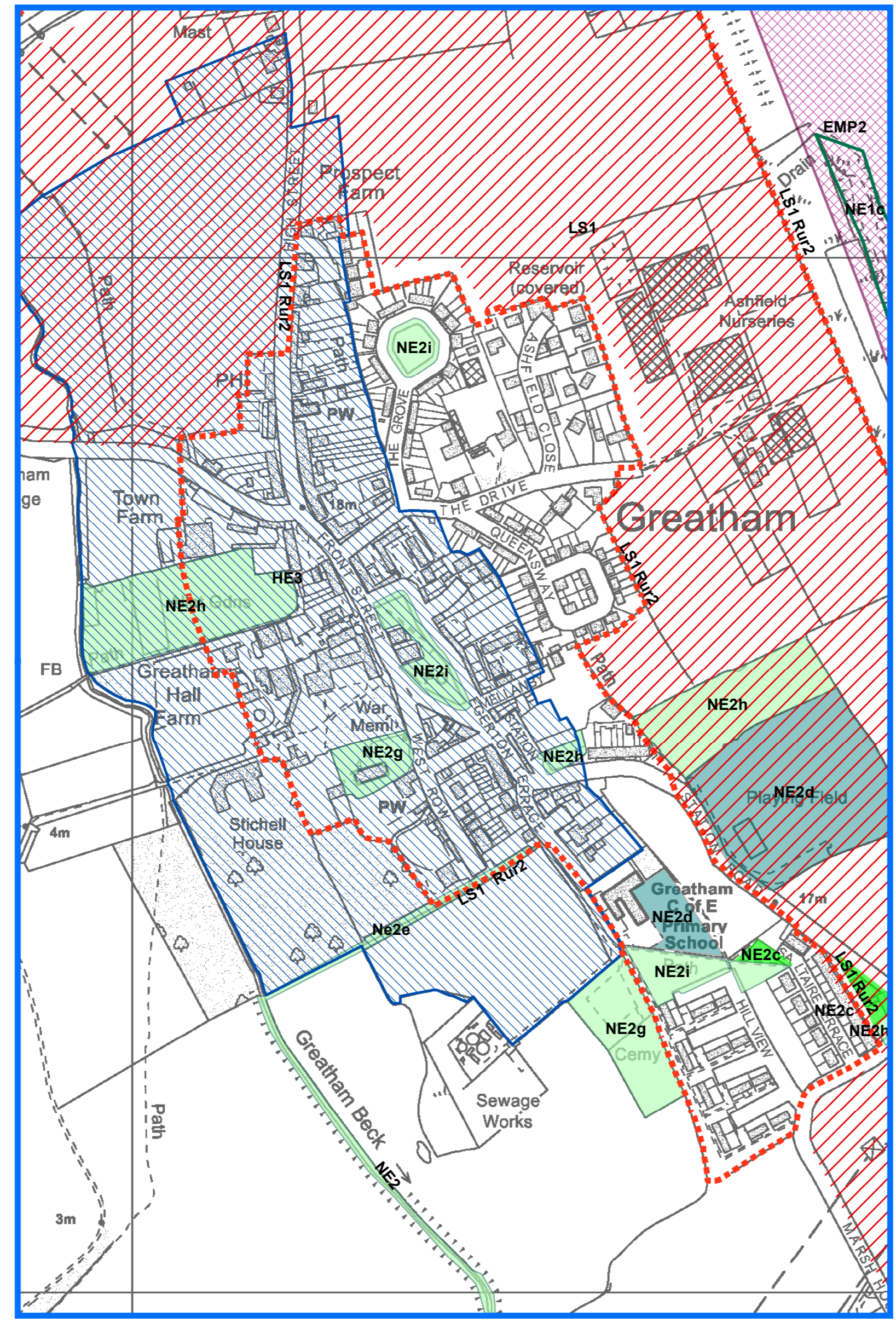
- New Housing Provision (HSG5-8)
- Urban Housing Sites (HSG3)
- The South West Extension Strategic Housing Site (HSG4)
- Leisure and Tourism (LT1- LT3)
- Leisure and Tourism (LT2)
- The Town Centre (RC2)
- Innovation and Skills Quarter (RC3)
- Edge of Town Centre Areas (RC4 - RC11)
- Retail and Leisure Parks (RC12 -RC15)
- Local Centres (RC16)
- Late Night Uses Area (RC17)
- Primary Shopping Area

- Underground Storage (EMP6)
- Access Road Underground Storage (EMP6)
- Prestige Employment Site Wynyard Business Park (EMP1)
- Queen's Meadow Business Park (EMP2)
- General Employment Land (EMP3)
- Specialist Industries (EMP4)
- Safeguarded Land for New Nuclear Power Station (EMP5)
- Scheduled Monument (Town Wall)
- Protected Wreck Site
- Scheduled Monument Sites (HE1)
- Registered Park and Garden (HE1)
- Conservation Areas (HE3)

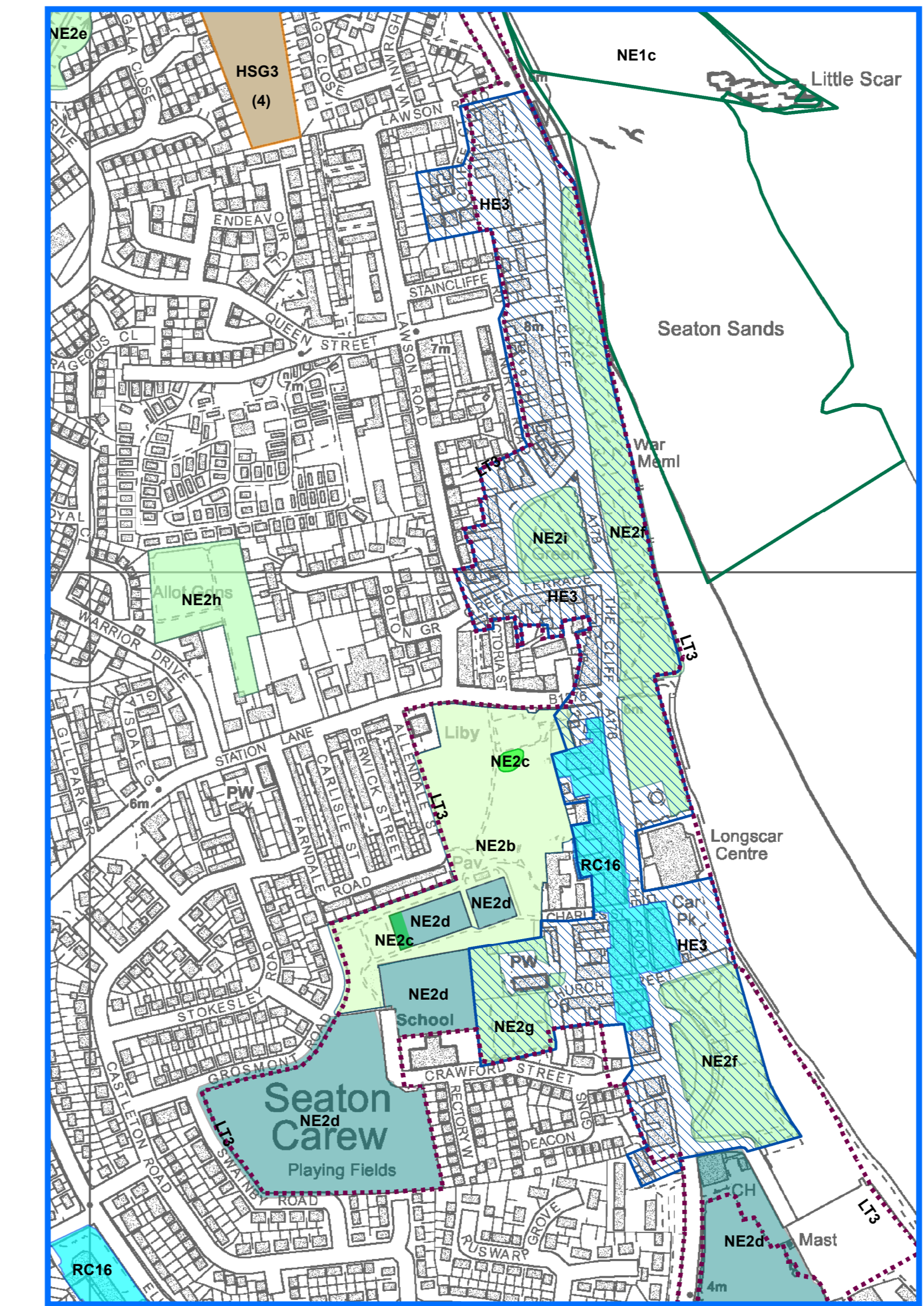
- Special Landscape Area (NE1) (13)
- Internationally Designated Site (NE1a)
- Nationally Designated Site (NE1b)
- Local Wildlife Sites (NE1c)
- Parks and Gardens (NE2b)
- Children's Play Space/Areas (NE2c)
- Outdoor Sports (NE2d)
- Local Green Corridors (NE2e)
- Civic Space (NE2f)
- Church Yards and Cemeteries (NE2g)
- Allotments and Community Gardens (NE2h)
- Amenity Open Space (NE2i)
- Natural and Semi- Natural Green Space (NE2j)
- Green Wedge (NE3)



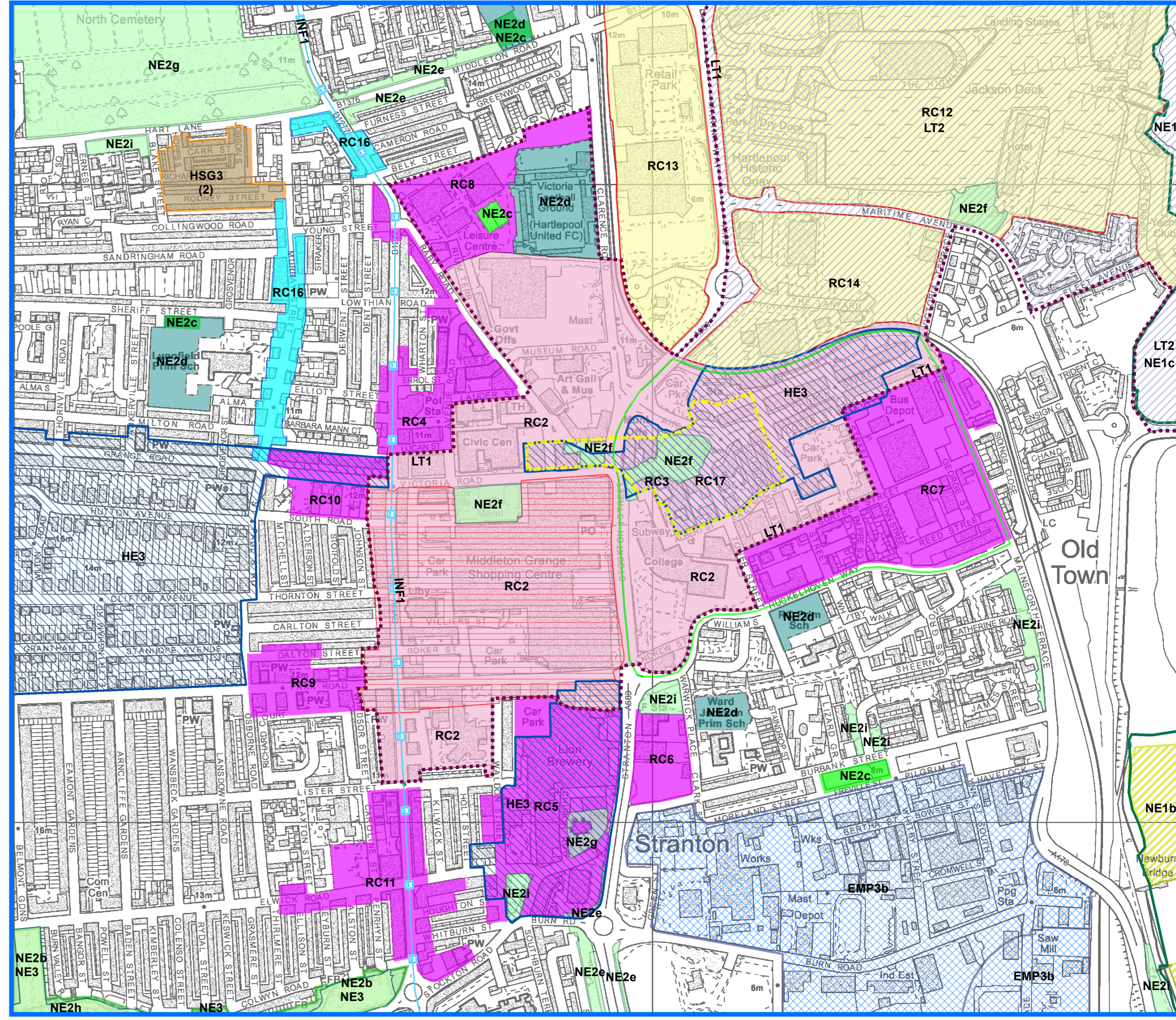
Insert C Wynyard - Scale 1:12,500



Insert E Greatham Village - Scale 1:4,000



Insert F Seaton Carew - Scale 1:4,000



Insert G Town Centre - Scale 1:5,000