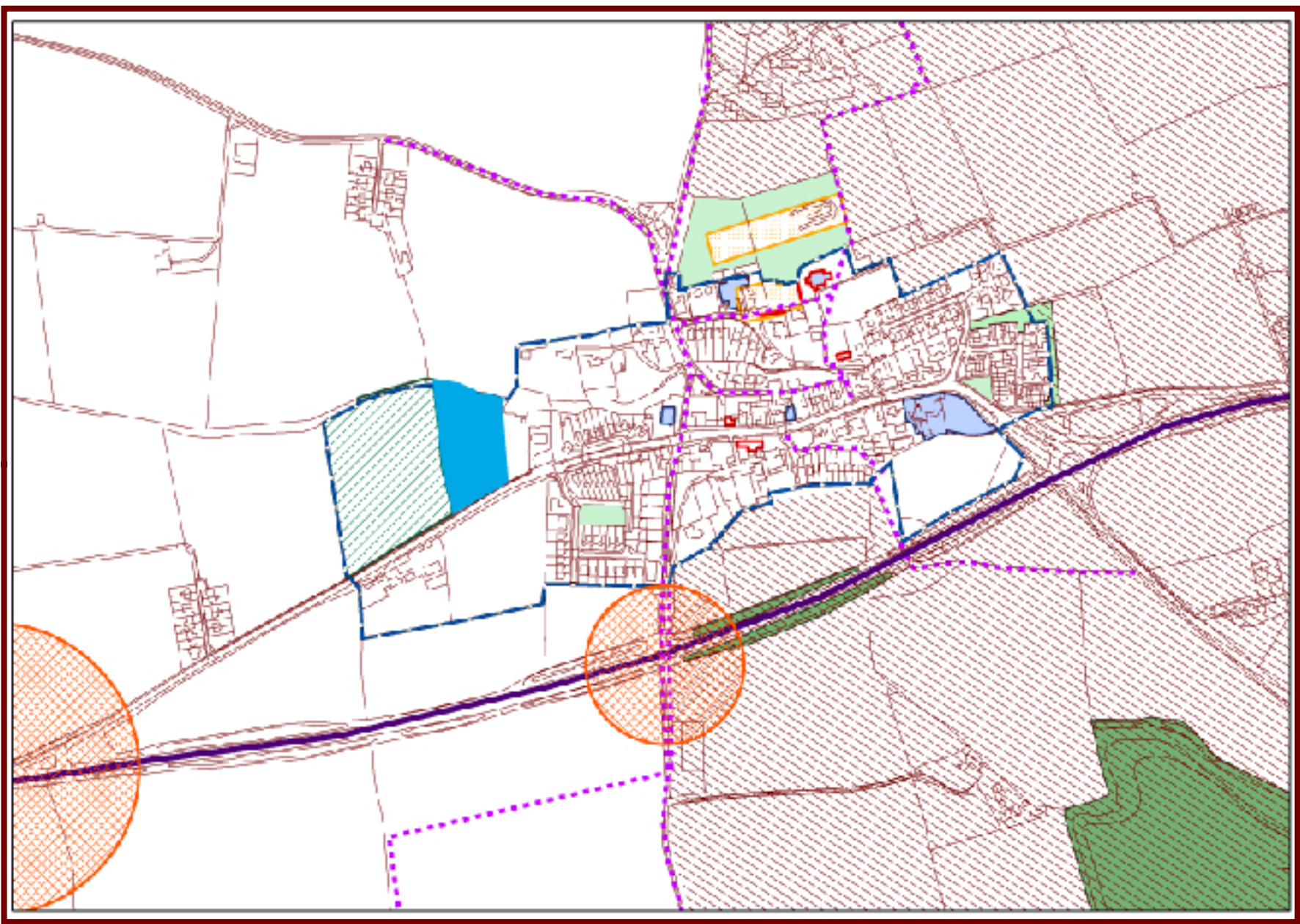
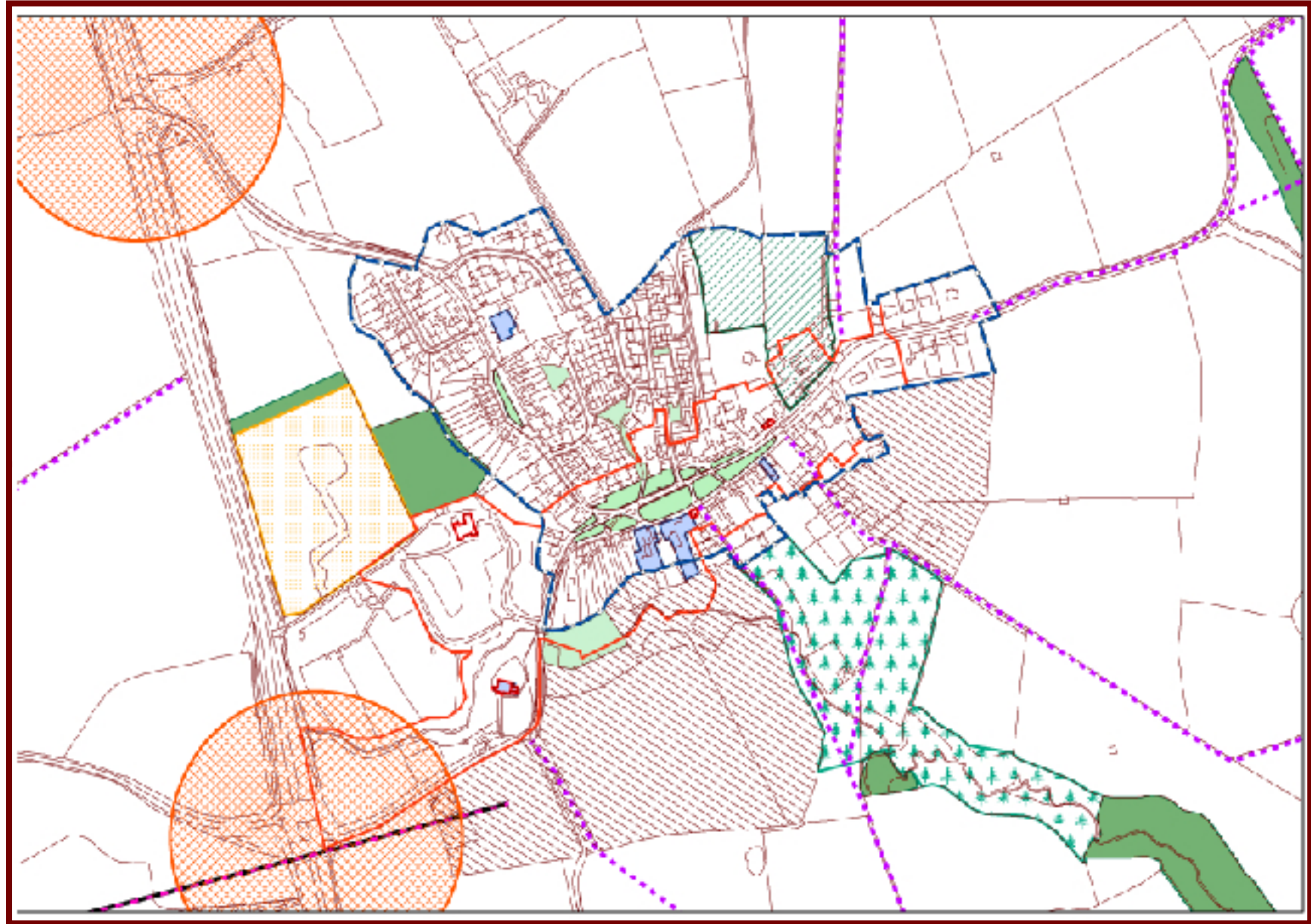


**Hartlepool Rural
Neighbourhood Plan
Made/Adopted December 2018**

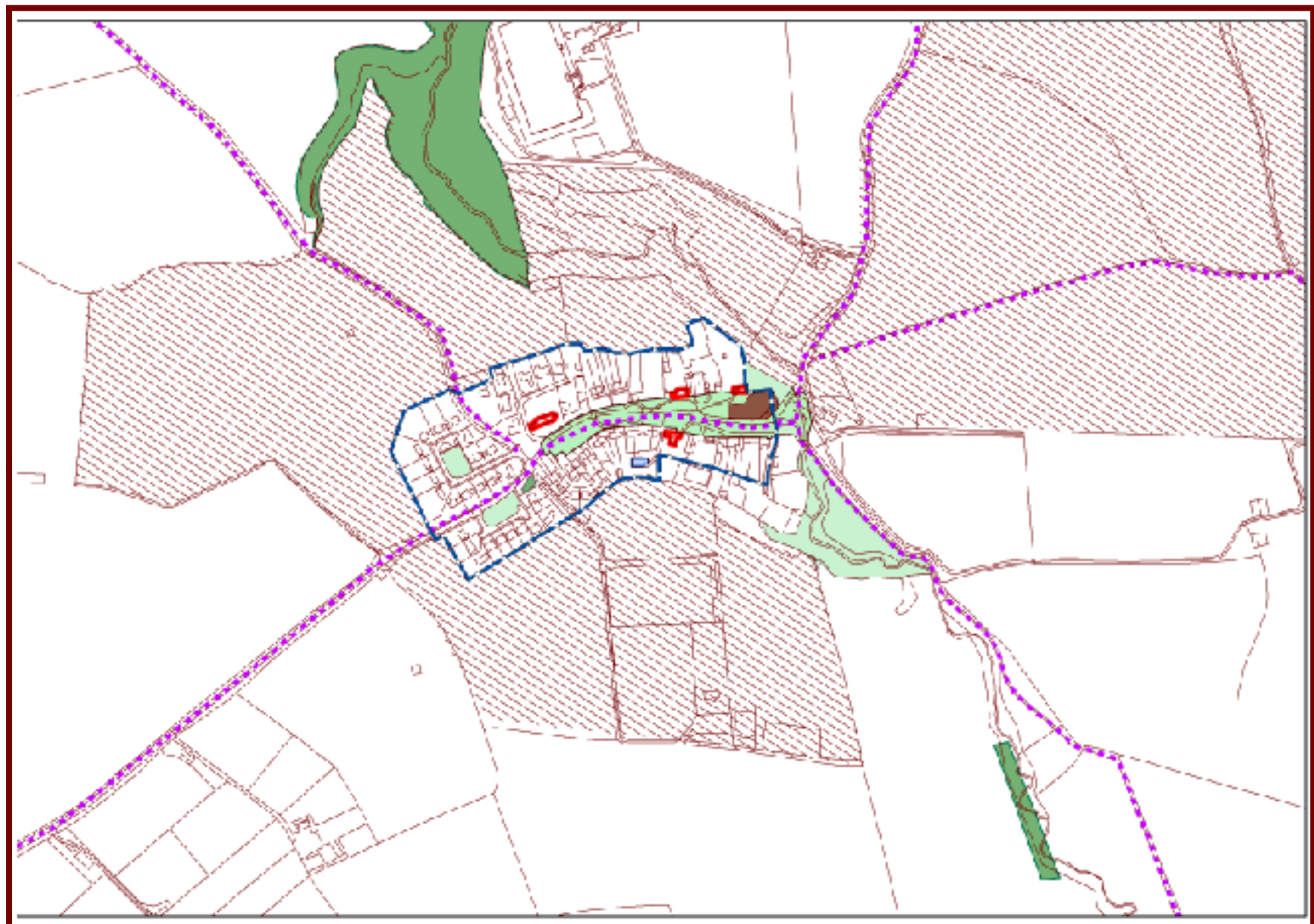
KEY	
	Rural Area
	Policy T2 Priority Footways and Cycle Ways
	Development Limits
	Conservation Area
	Policy T2 New Bridges and Light Controlled Crossing
	Highway Aspirational Road Improvement
	Listed Buildings
	Rural Plan Housing
	Scheduled Monuments
	Community Buildings
	Accessible Green Spaces
	Local Wildlife Sites
	South West Extension Housing Areas
	RHM Site
	Greatham Railway Station
	Green Gaps
	Local Green Space
	New Multi - Purpose Community Open Space at Hart
	Junction Improvement Areas
	A19 Service Station
	Wind Turbine
	Solar Farm
	Allotments



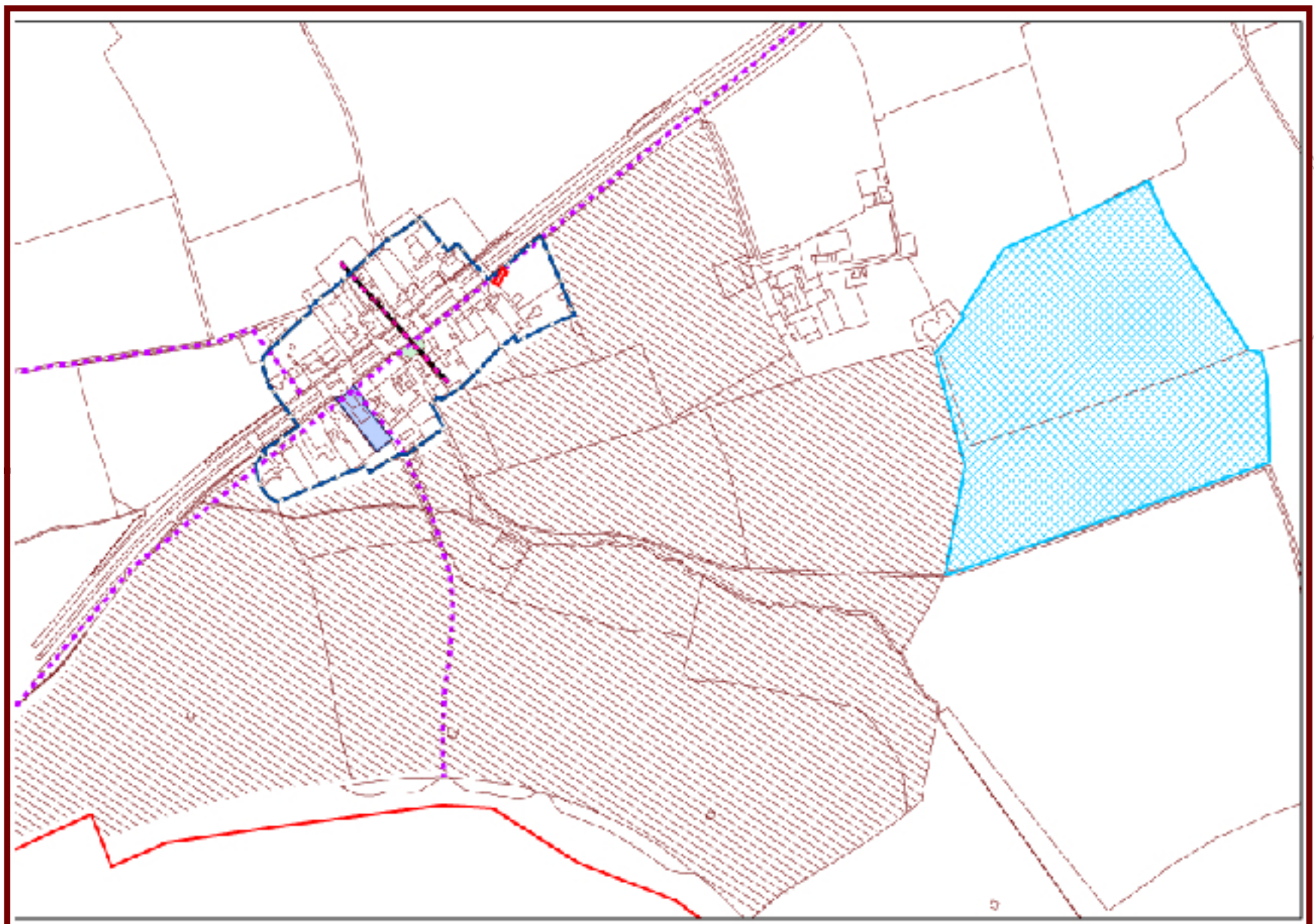
Hart Village



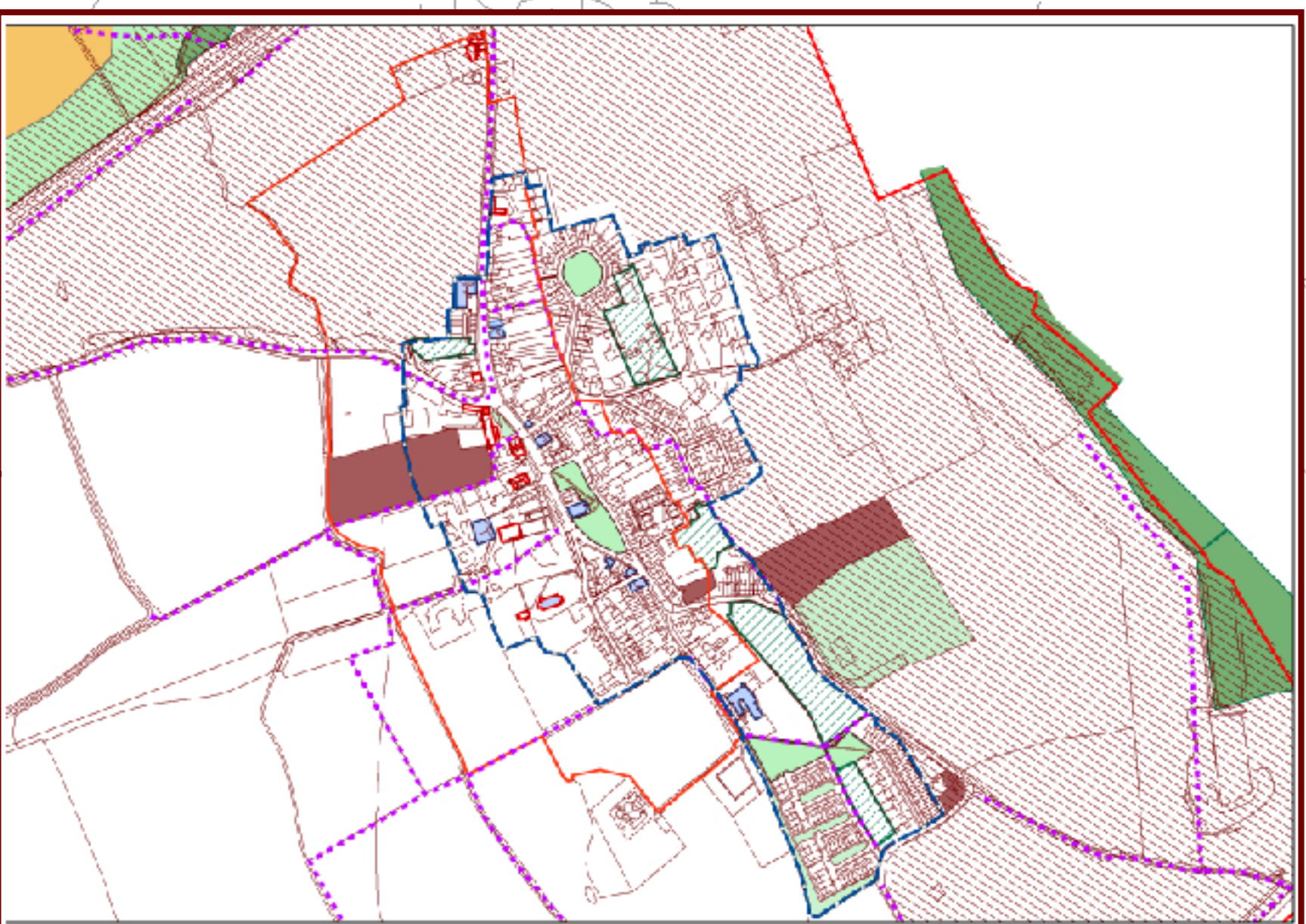
Elwick Village



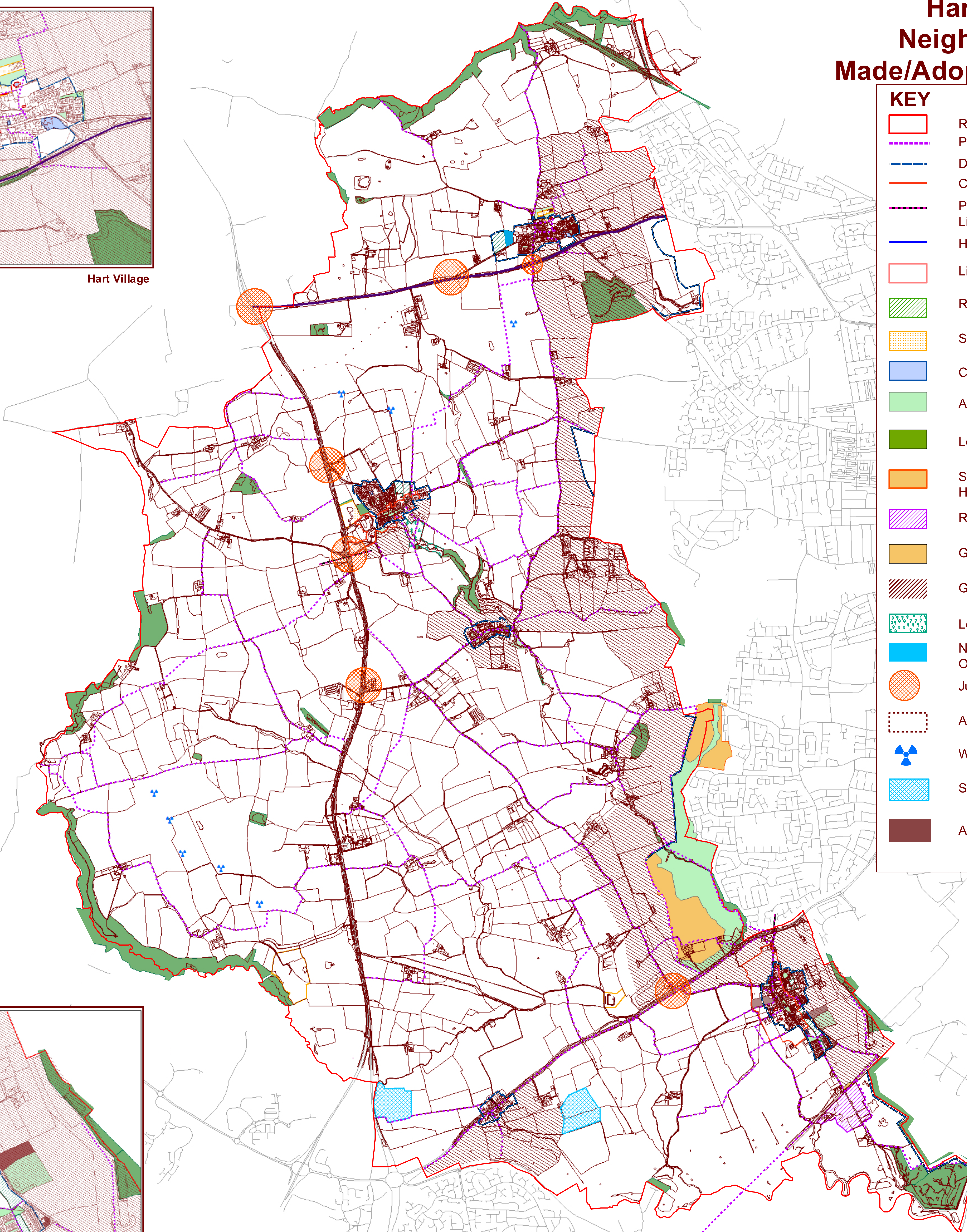
Dalton Village



Newton Bewley Village



Greatham Village



N

