



A new Special School for  
the Tees Valley

---

Sponsor engagement event July 2019

Can you see a bright future for our young people here?

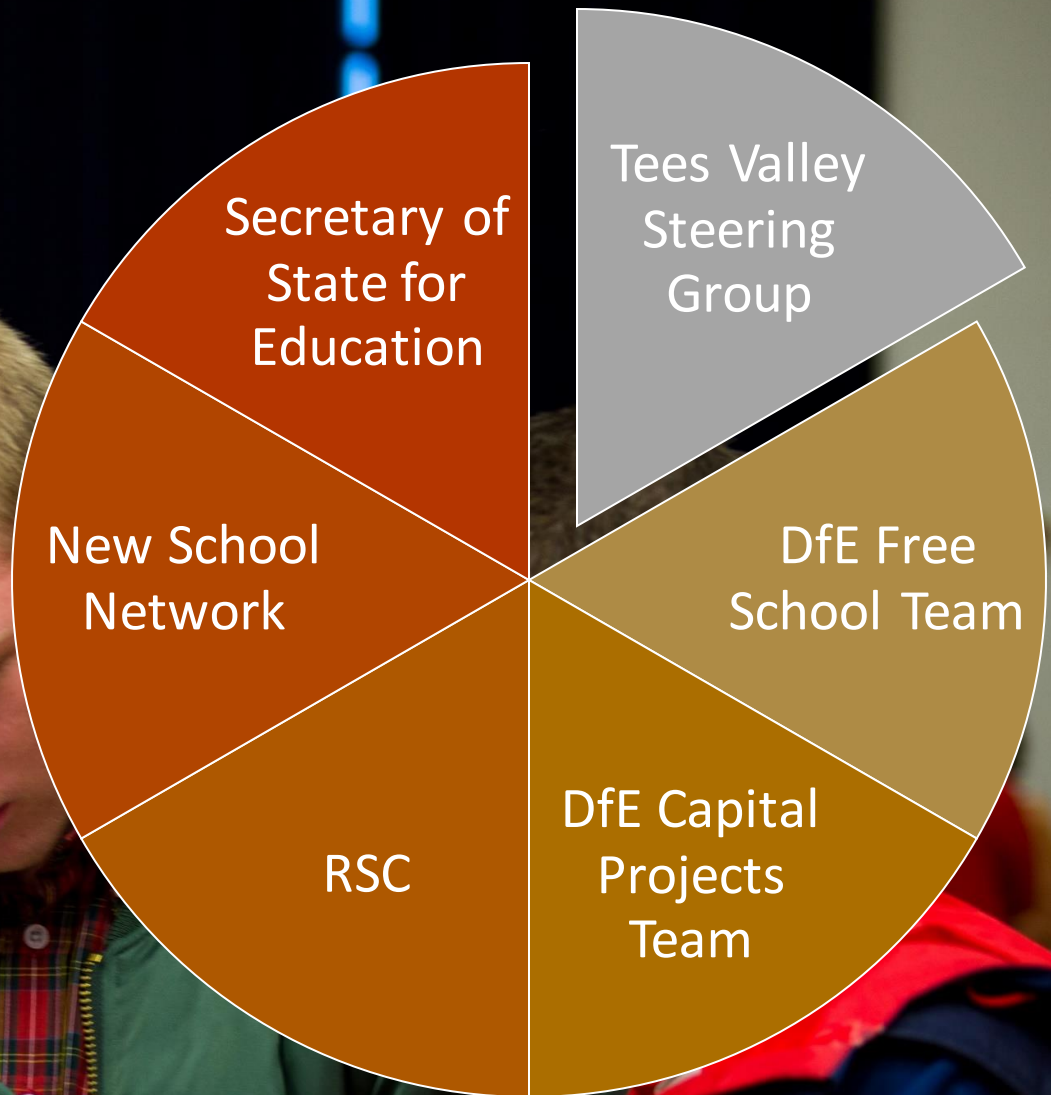
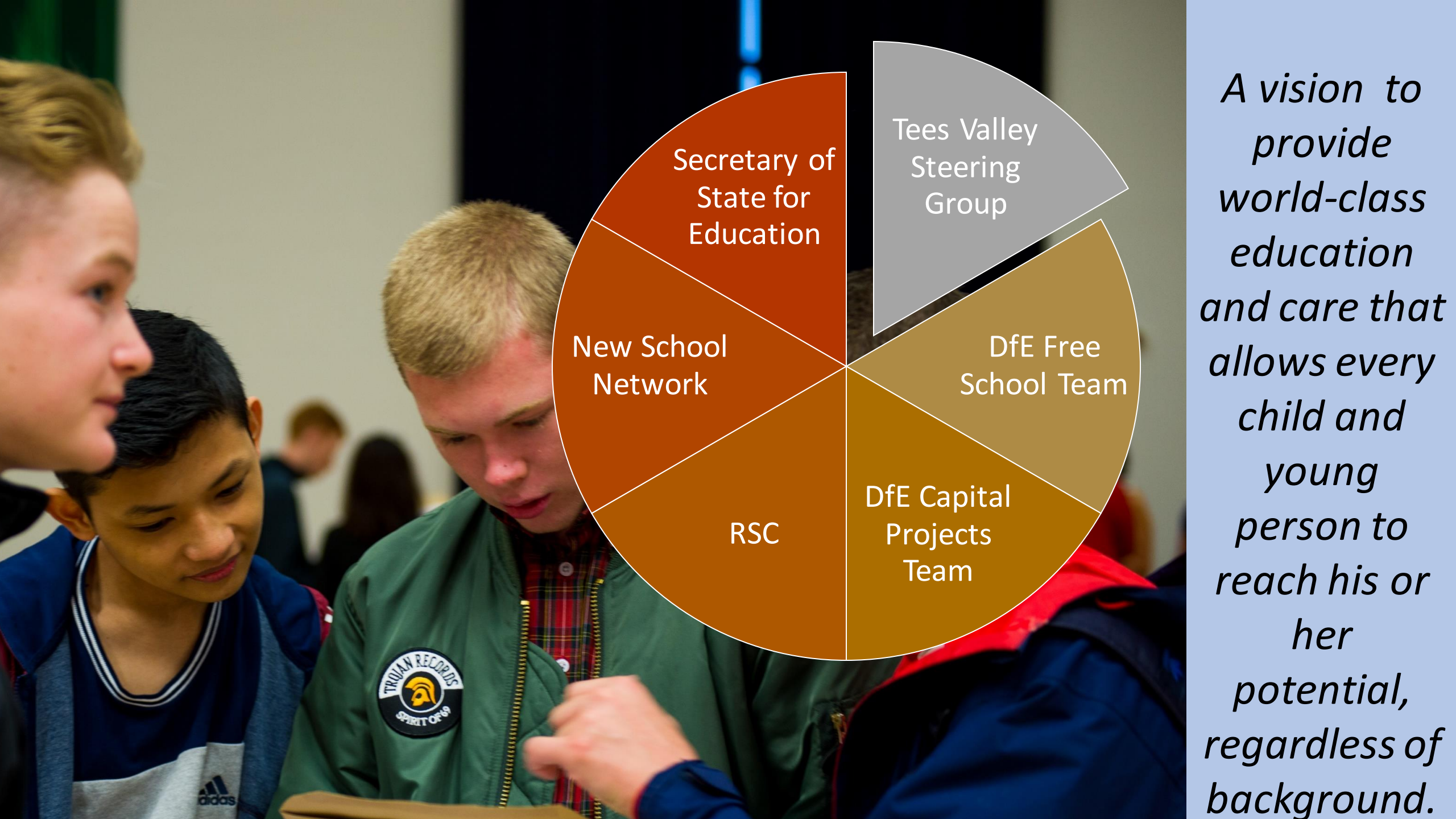




Who are we?  
What we will achieve?  
Are you the partner for the challenge?

---

Next steps



*A vision to provide world-class education and care that allows every child and young person to reach his or her potential, regardless of background.*

Submission by Tees Valley Partner LAs – Oct 2018



Approval by Secretary of State to take bid forward – March 2019



Tees Valley Steering Group refining specification



Finding the right site – DfE with R&C May/June 2019



Engagement events with partners – submissions by Sept 30<sup>th</sup> 2019



Applications approved Dec 2019



Building of school commences Jan 2020 – DfE with provider

# Supporting learners in Darlington, Middlesbrough, Redcar & Cleveland and Stockton on Tees



Darlington Local Area Strategy for Special Educational Needs and/or Disability (SEND)  
2019 - 2022



**"THE BEST START IN LIFE"**

OUR STRATEGY FOR IMPROVING OUTCOMES ACHIEVED BY CHILDREN AND YOUNG PEOPLE AGED 0-25 WITH SEND  
"Keeping Children and Young People at the centre of all we do, by providing services built around the child, their family and the community"

Special Educational Needs and Disability Strategy  
2018 - 2020



Special Educational Needs and Disabilities Strategy

2017 - 2020



Redcar & Cleveland Borough Council

Published September 2017

## SEN Support


Guidance for mainstream schools  
Including: Academies, PRUs, Early Years, Post-16 Providers

The provision the Local Authority expects to be made available at SEN Support (without an Education, Health and Care Plan)



Big plans for the young people of our Borough

*"Bringing together four local authorities to provide the best possible opportunities, support and education for our young people."*



*Stockton on Tees is a great place to grow up, where children and young people are protected from harm and supported to be the best they can be in life.*

***Middlesbrough - Fairer, Safer, Stronger supporting families to keep children safe, improve their well-being and help them achieve their full potential.***

*Darlington - the right support and opportunities at the right time to become resilient, happy and successful adults*

**In Redcar & Cleveland we believe that children, young people and families should be at the heart of the system**





The landscape across the four authorities

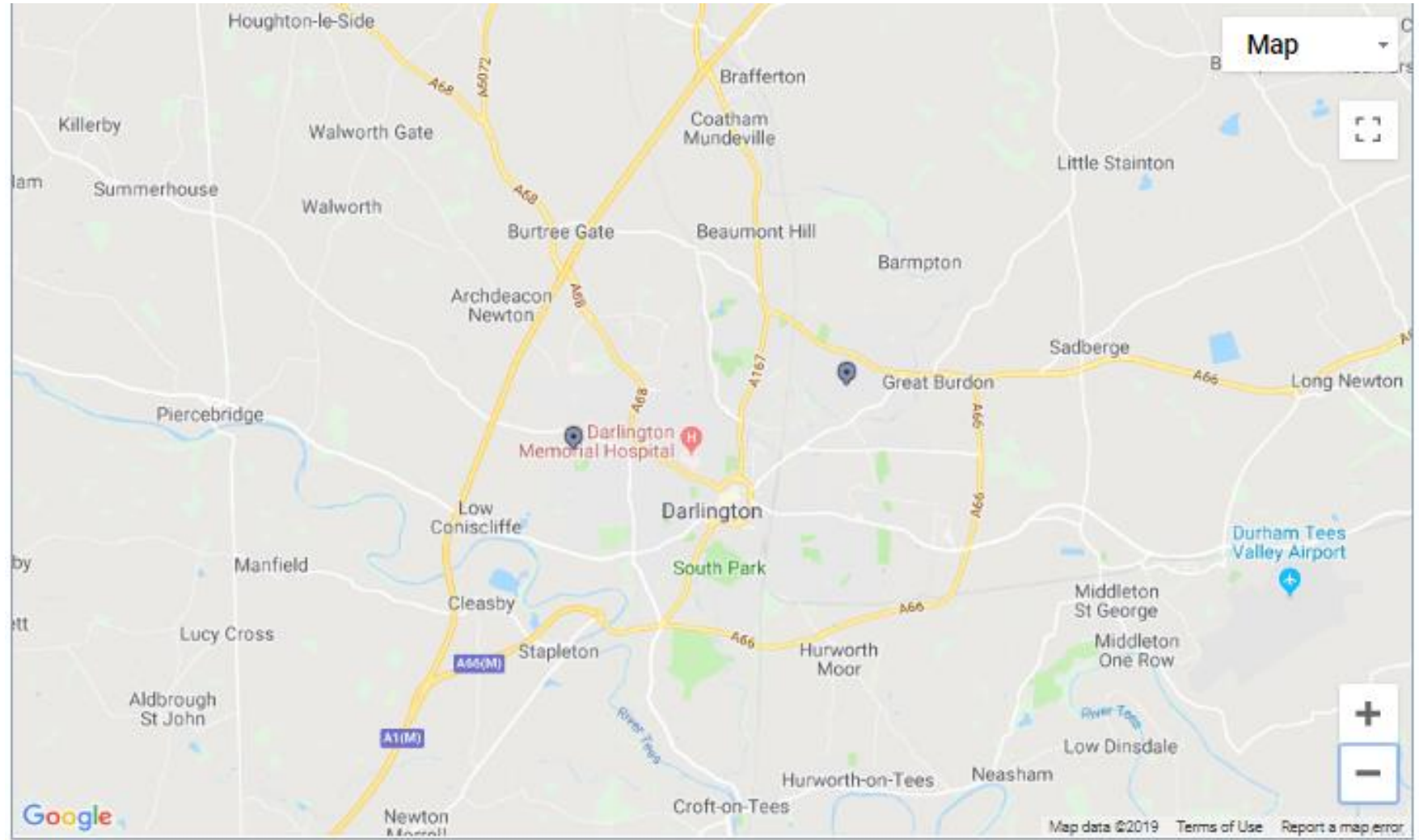
Special Schools and Independent from Get Information about Schools

<https://get-information-schools.service.gov.uk/Establishments/Search?tok=8TOUKQHi>





- [Beaumont Hill 2-19 – GOOD 2018](#) The Education Village Academy Trust
- [Marchbank Free School – GOOD 2015](#) The Education Village Academy Trust
- Pear Tree School
- Priory Hurworth Academy
- Oakwood Learning Centre



■ Outstanding ■ Good ■ Requires Improvement ■ Inadequate

Last updated on 18/06/2019 1PM



*“We believe that by coming together as Councils we shall promote collaborative working with key partners to improve quality, efficiency and to drive forward integrated working for more effective service delivery.”*

**Specification document**

	EHCP	SEMH	ASD
	E=562	K= 412	K=111
		E=112	E=156
<b>SEN SUPPORT K</b>	<b>2031</b>		

# Middlesbrough

moving forward

- [River Tees Middle Academy- GOOD 2019](#)
- [Beverley School GOOD 2017](#)
- [Priory Woods School OUTSTANDING 2018](#)
- [Holmwood School GOOD 2017](#)
- Hollis Academy – not yet inspected Horizons Specialist Academy Trust
- Discovery Special Academy – not yet inspected Tees Valley Education



■ Outstanding ■ Good ■ Requires Improvement ■ Inadequate

Map data ©2019 Terms of Use Report a map error  
Last updated on 18/06/2019 1PM



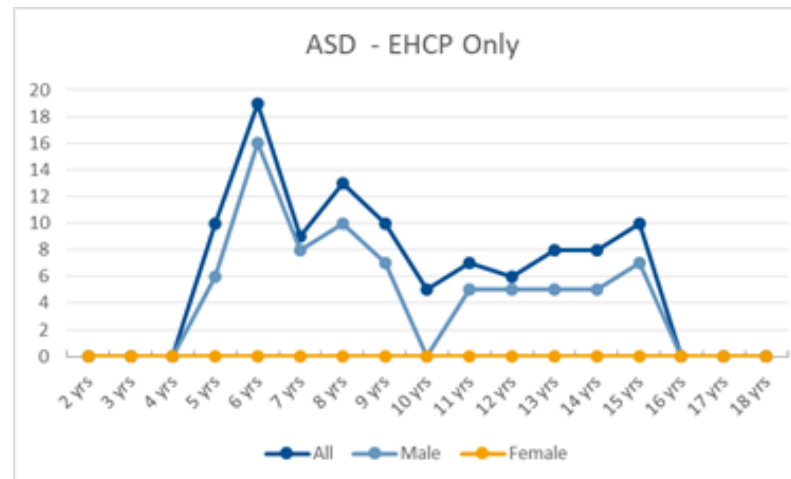
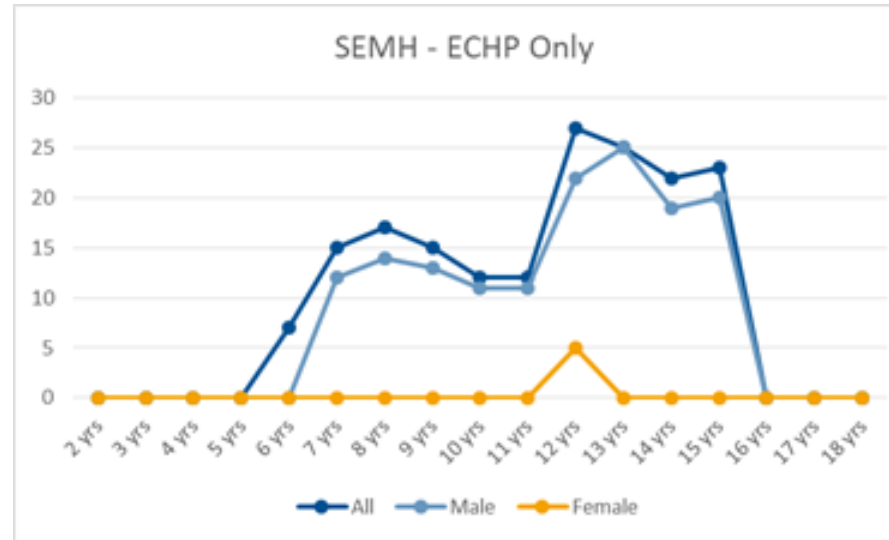
“Young people and families have additional anxieties about lack of more local educational placement opportunities as well as more challenges in terms of becoming part of a local community peer group.”

**Specification document**

	% of SEND Pupils
Autistic Spectrum Disorder	4.17%
Hearing Impairment	3.02%
Moderate Learning Difficulty	31.85%
Multi-Sensory Impairment	0.23%
SEND Support but no specialist assessment of type of need	4.20%
Other Difficulty/Disability	6.20%
Physical Disability	2.81%
Profound & Multiple Learning Difficulty	0.71%
Severe Learning Difficulty	16.54%
Social, Emotional and Mental Health	14.14%
Specific Learning Difficulty	3.78%
Speech, Language and Communication Needs	10.75%
Visual Impairment	1.59%

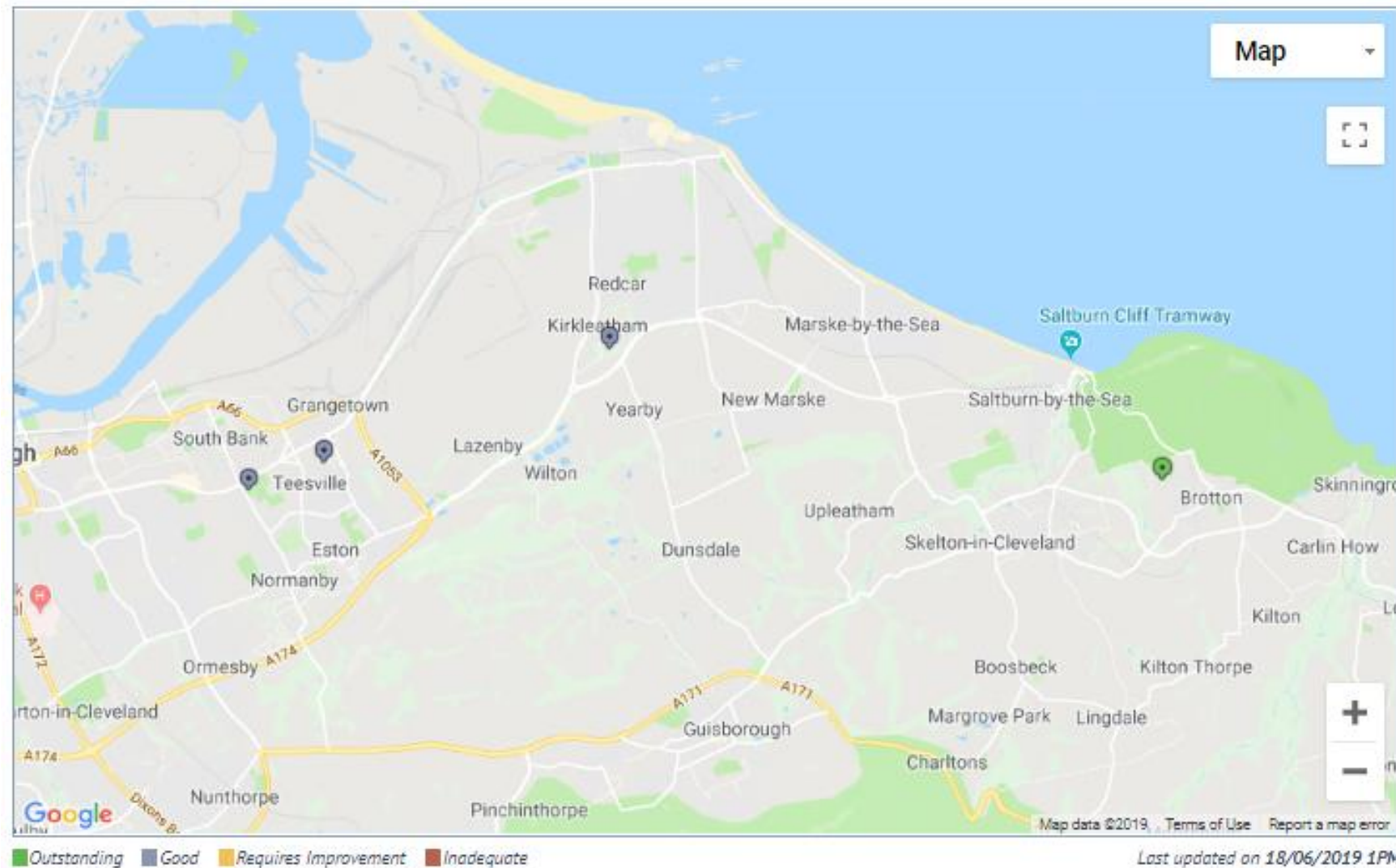
“Young people and families have additional anxieties about lack of more local educational placement opportunities as well as more challenges in terms of becoming part of a local community peer group.”

**Specification document**





- [Kirkleatham Hall School](#)  
[GOOD 2018](#)
- [KTS Academy](#)  
[OUTSTANDING 2015](#)
- [Mo Mowlam Academy](#) –  
not yet inspected  
Horizons Specialist  
Academy Trust





*“Our new Tees Valley Free School provides the opportunity to have appropriate training for aspiring teachers through the specialist initial teacher training programme which will be developed at the school. This will build capacity and expertise across the Tees Valley area and link as appropriate with existing teacher training provision. The school will be a Beacon of Excellence.”*

	EHCP	SEMH	ASD
	773	151	211
<b>SEN SUPPORT</b>	<b>2705</b>		



# Stockton-on-Tees

BOROUGH COUNCIL

- [Abbey Hill Academy GOOD 2015](#) Horizons Specialist Academy Trust
- [Ash Trees Academy GOOD 2017](#) Ascent Academies Trust
- [Green Gates Academy RI 2017](#) Horizons Specialist Academy Trust
- Hartwell School Witherslack group
- King Edwin School
- [Westlands Academy GOOD 2016](#) Horizons Specialist Academy Trust



■ Outstanding ■ Good ■ Requires Improvement ■ Inadequate

Last updated on 18/06/2019 1PM





**Stockton-on-Tees**  
BOROUGH COUNCIL

*“Each young person who will attend the school will be undergoing an EHC assessment or already have been issued with an EHCP. A small number of places will be offered on an ‘assessment’ basis to ensure children and young people have their needs correctly identified and supported swiftly and appropriately by professionals in a suitable environment.”*

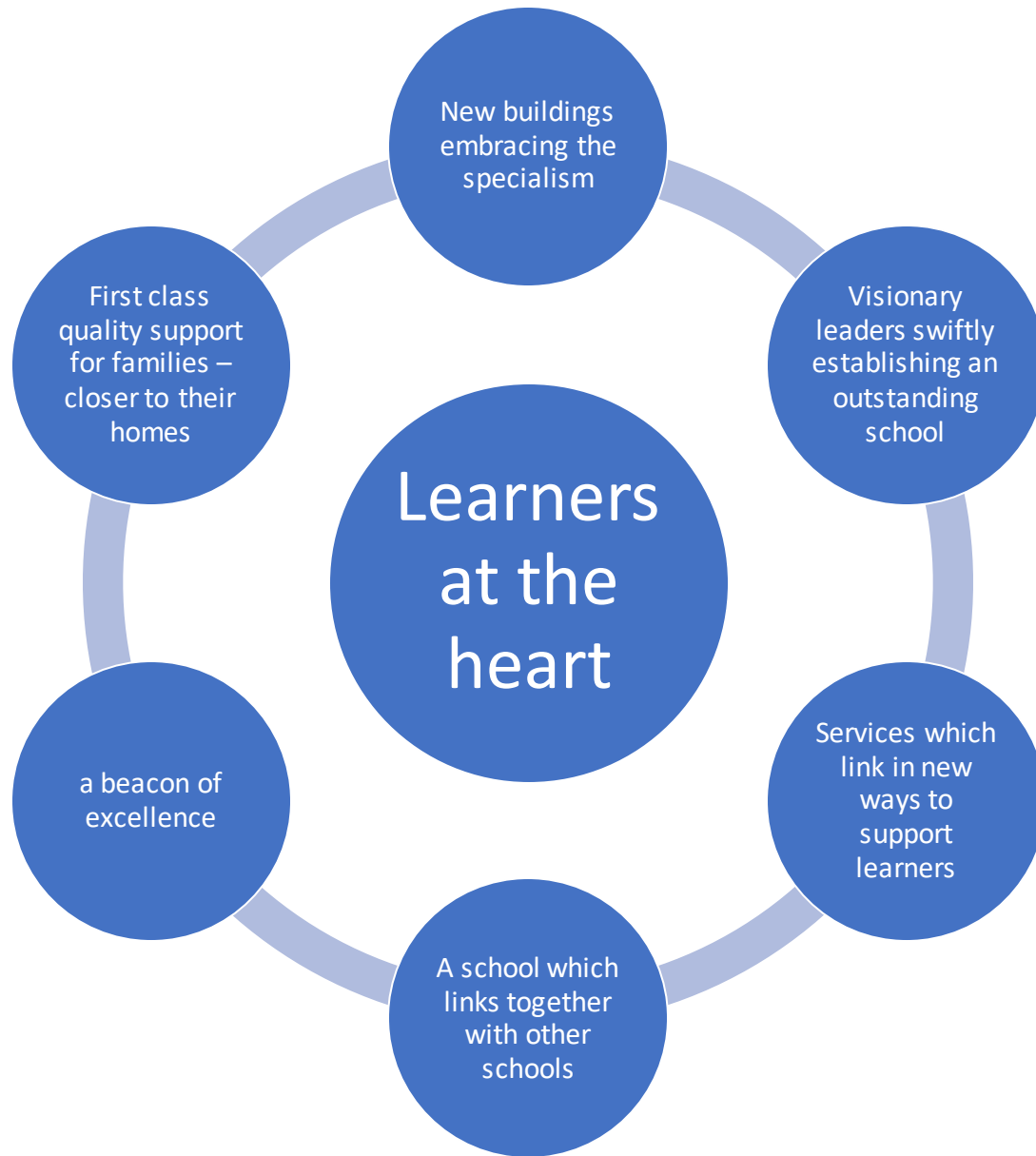
**Specification Document**

	<b>EHCP</b>	<b>SEMH</b>	<b>ASD</b>
	1501	267 (17.7%)	280 (18.6%)
<b>SEN SUPPORT</b>	<b>4077</b>	<b>725 (17.8%)</b>	<b>230 (5.6%)</b>

Partners already working across the four authorities include:



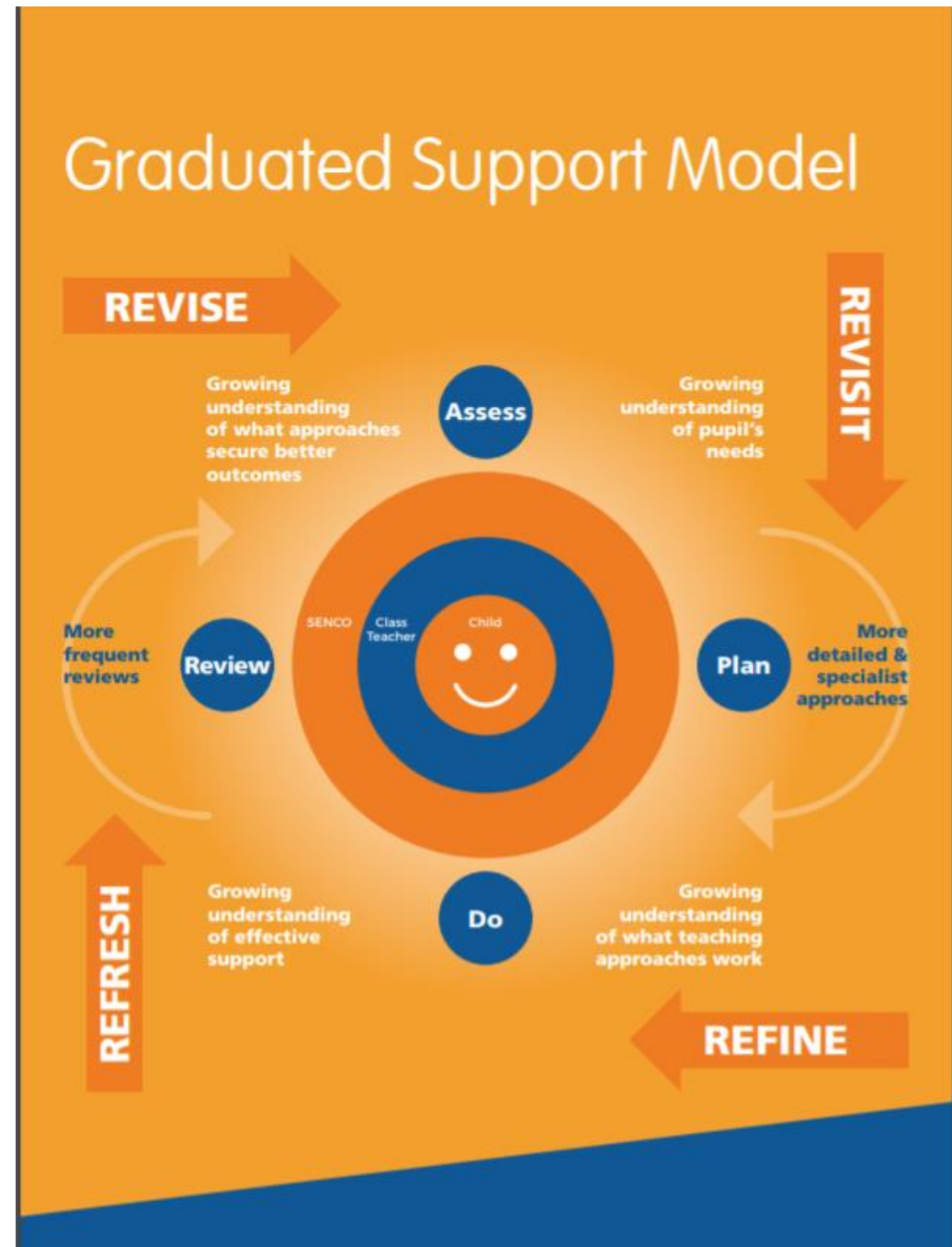
- THE EDUCATION VILLAGE ACADEMY TRUST
- HORIZONS SPECIALIST ACADEMY TRUST
- TEES VALLEY EDUCATION
- KILTON THORPE SPECIALIST ACADEMY
- WITHERSLACK GROUP
- THE ASCENT ACADEMIES' TRUST

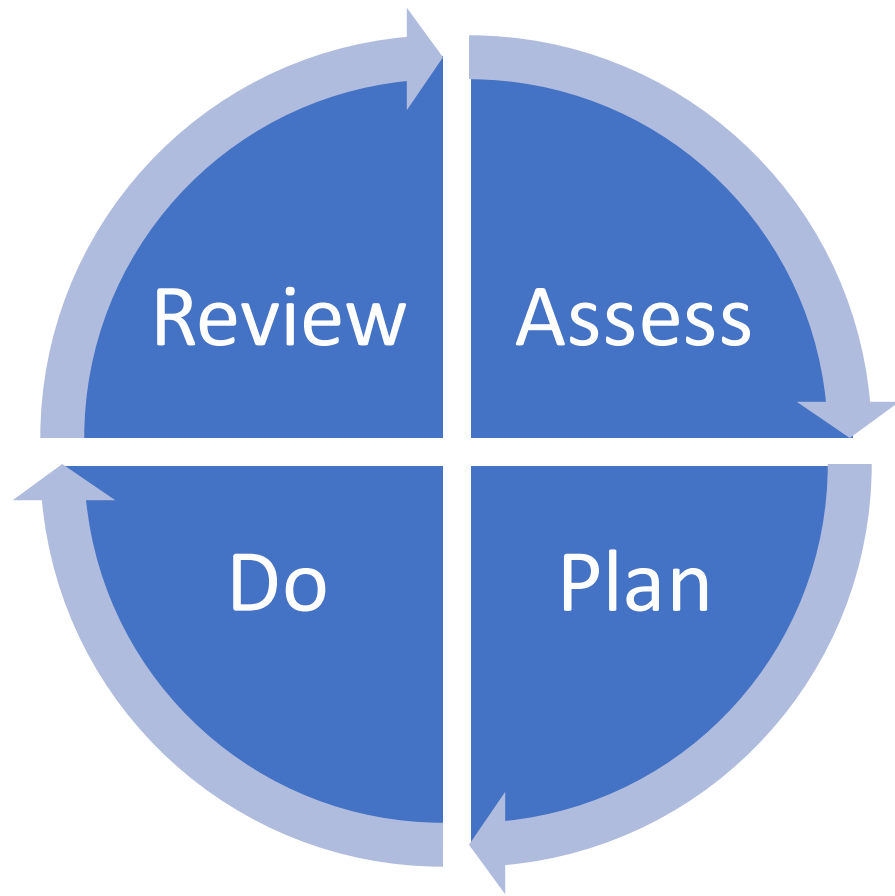


*The new school will take a lead in transforming the quality of provision not only within the school itself but beyond in helping to enrich and improve the education workforce.*

# How do we work with our schools?

*Our bid is based on our development of a graduated response that we have been working on with our schools.*







Can you see a bright future for our young people in this image?



*A unique opportunity  
to work alongside  
four local authorities  
to transform lives*



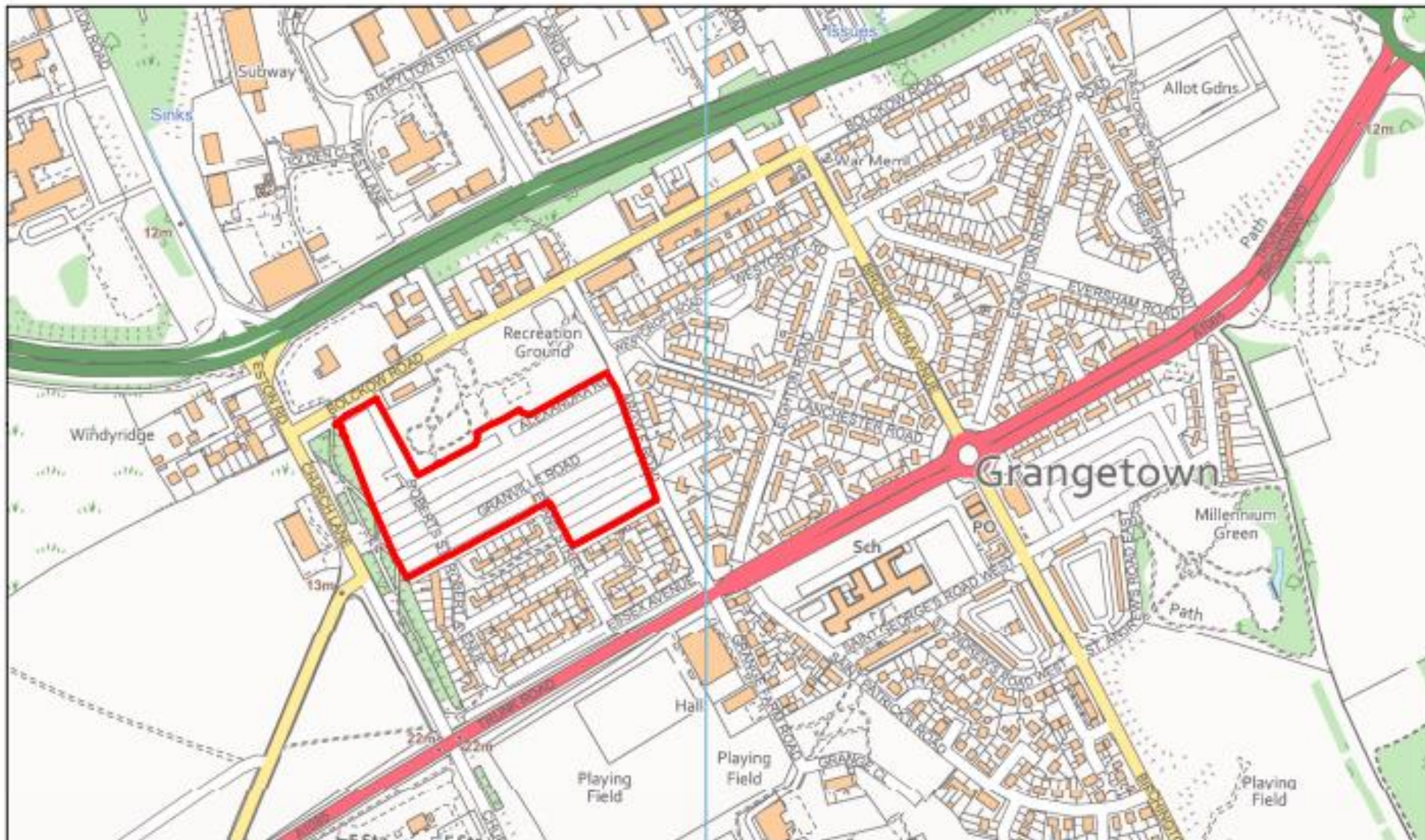


*A unique opportunity  
to work alongside  
four local authorities  
to transform lives*





*A unique opportunity to work alongside four local authorities to transform lives*



Contains Ordnance Survey data © Crown Copyright and database rights 2019 (300019983)



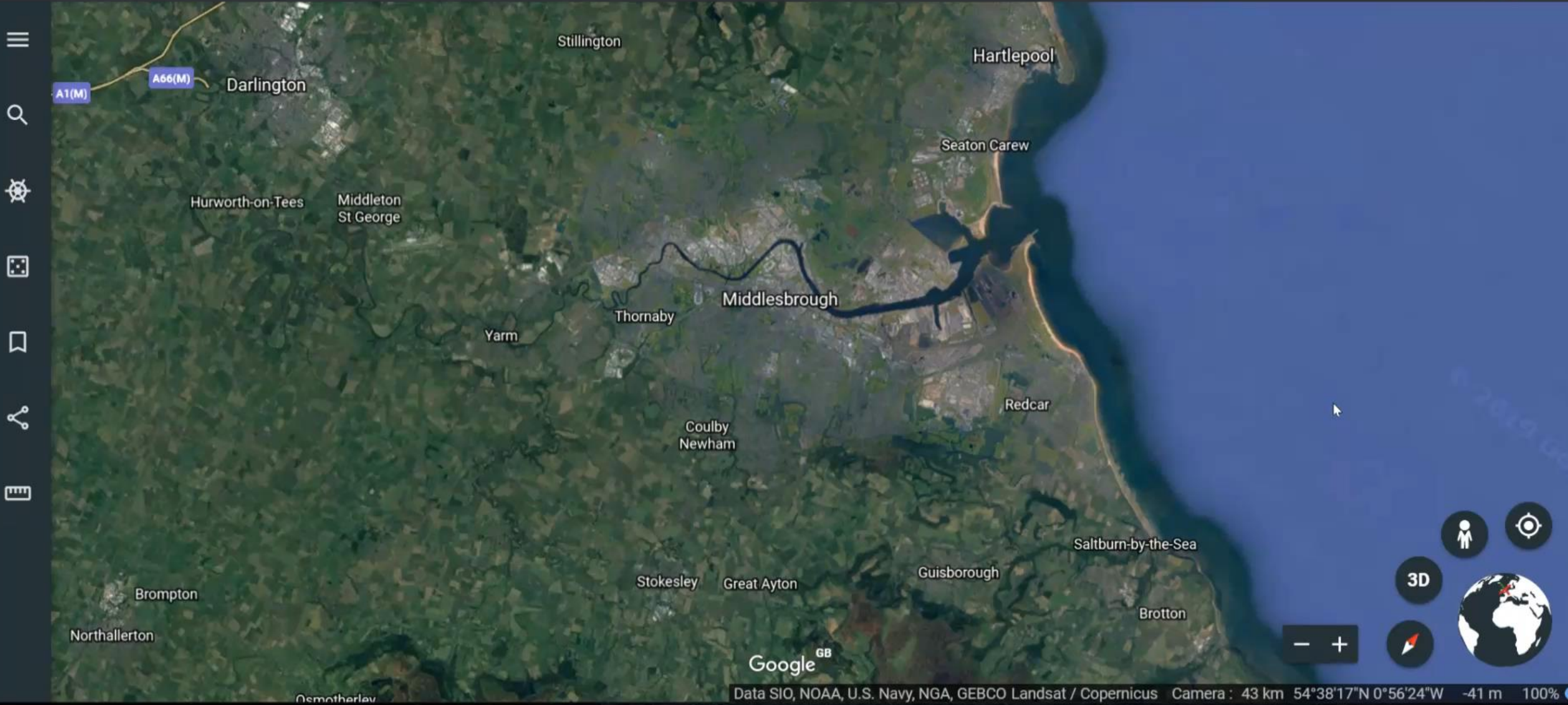
## Proposed site for Tees Valley Special Free School



Date: 20/06/2019  
 Drawn by: DM  
 Scale = 1:5,000  
 DWG No: RGN298

# Tees Valley Special School





# Questions?





# Key contacts

## Lead Authority

**Name:** Diane McConnell

**Job title:** Interim Chief Education Officer

**Email:** [diane.mcconnell@redcar-cleveland.gov.uk](mailto:diane.mcconnell@redcar-cleveland.gov.uk)

**Tel:** 01642 444342

**Name:** Sue Beevers

**Job title:** Capital Projects & Place Planning Lead

**Email:** [Susan.Beevers@redcar-cleveland.gov.uk](mailto:Susan.Beevers@redcar-cleveland.gov.uk)

**Tel:** 01642 837752

If you would like any further information or would like to discuss the site, please contact:

**Name:** Ian Dunn

**Job title:** Schools Capital Officer

**Email:** [Ian.Dunn@redcar-cleveland.gov.uk](mailto:Ian.Dunn@redcar-cleveland.gov.uk)

**Tel:** 01642 771162

## *Tees Valley Special School Steering Group Members*

### **Darlington**

[Paul.Richardson@darlington.gov.uk](mailto:Paul.Richardson@darlington.gov.uk)

### **Middlesbrough**

[Caroline.Cannon@middlesbrough.gov.uk](mailto:Caroline.Cannon@middlesbrough.gov.uk)

[David.Ball@middlesbrough.gov.uk](mailto:David.Ball@middlesbrough.gov.uk)

### **Redcar and Cleveland**

[Joanne.Levie@redcar-cleveland.gov.uk](mailto:Joanne.Levie@redcar-cleveland.gov.uk)

### **Stockton**

[Clare.Mahoney@stockton.gov.uk](mailto:Clare.Mahoney@stockton.gov.uk)

# Engagement Event 2 on 9<sup>th</sup> July – 11.00 am

Location:

*Inspire to Learn*

*Normanby Road*

*Redcar and Cleveland*

*TS6 9AE*

Telephone: 01642 467138

- An opportunity for further questions with the Steering Group
- Visit to the site
- Responses to key questions raised at Engagement Day 1