

Hartlepool Ward Profiles

Introduction

In 2019 the Electoral Commission carried out a boundary review of the wards in Hartlepool resulting in the introduction of a new ward. This report provides a set of ward profiles for the new wards covering factors such as population, employment and deprivation levels. Some of the data is not yet available at ward level because the changed boundaries mean that the data needs to be recalculated. This report will be updated as more data becomes available at ward level.

The figures provided are the most up to date available (in some cases this may be from the 2011 Census as the 2021 Census data has not yet been published).

About the area

Hartlepool is a Unitary in the North East region with a population of [93,663](#) in 2019. The area is made up of 12 wards. The ward with the largest population is Victoria, representing 9.17% of the total resident population of the area, or [8,586](#) residents. The population density across Hartlepool is [9.99 persons per hectare](#).

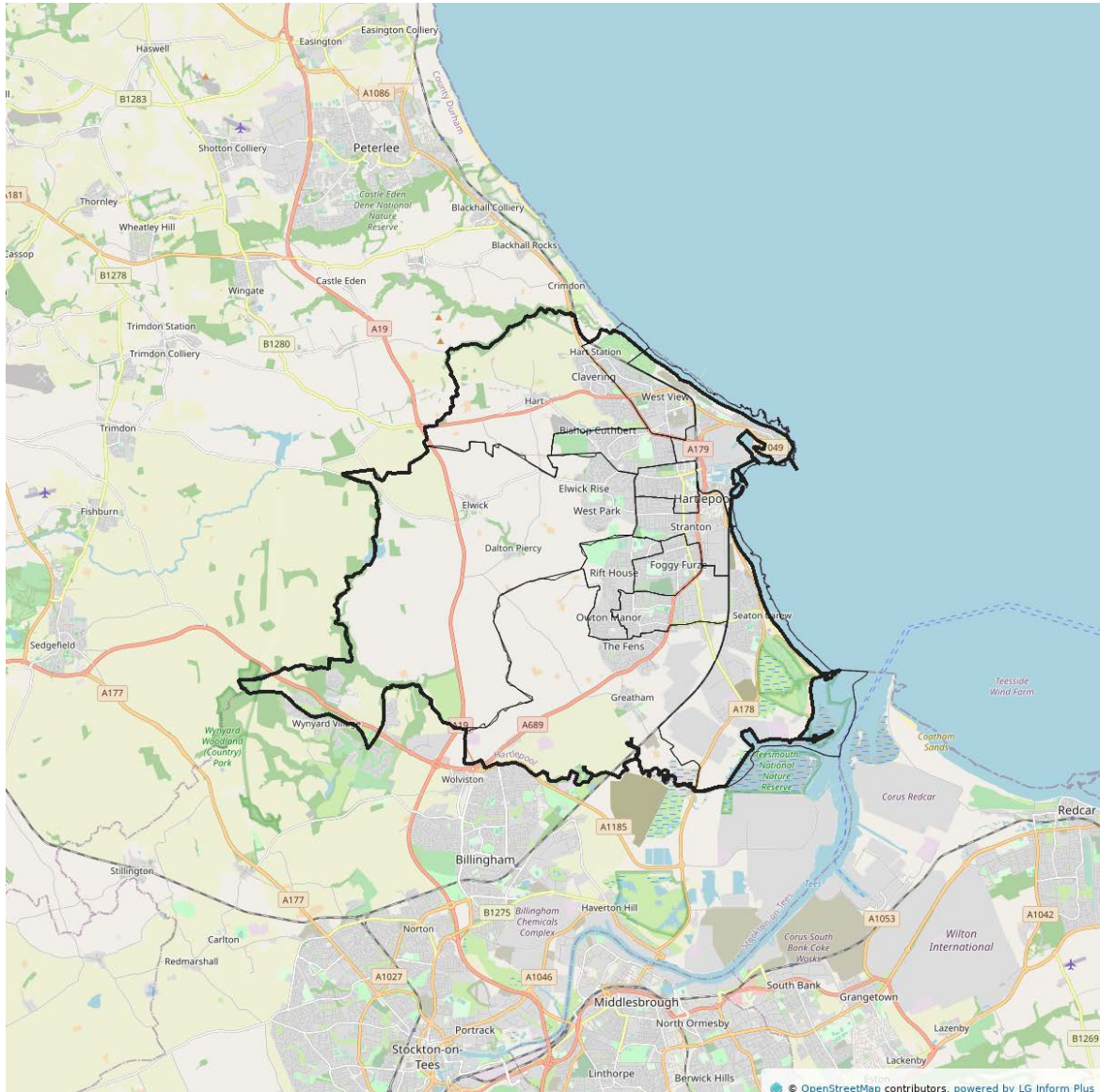
The mean age of the population was [40](#) years in 2011, the latest date for which mean age is available. This compares with a mean age of [40](#) years for the North East region, and [39](#) years for England.

2.3% of the population was from a black or minority ethnic (BME) population in 2011, the latest data on ethnicity. This compares with a BME population of 4.7% for the North East region, and 14.6% for England.

The life expectancy at birth for people living in Hartlepool is [77.2 years](#) for males, and [81.4 years](#) for females. This compares with the England life expectancy at birth for males of [79.1 years](#) and [83.0 years](#) for females, for the period 2010-2014.

Ward Boundary Map

Map showing the new ward boundaries.



Population

This section describes the population of Hartlepool through factors such as age, ethnicity and dependent children.

Population by ward

The total resident population of Hartlepool in 2019 was [93,663](#). By 2039 the population in Hartlepool is projected to be [96,537](#). The ward with the largest population is Manor House, representing 9.17% of the total population of all wards in Hartlepool.

This table gives a broad age breakdown by ward in Hartlepool. Manor House ward has

the highest proportion of the population who are in the 0-15 age group, which represents 10.42% of the total population within the ward.

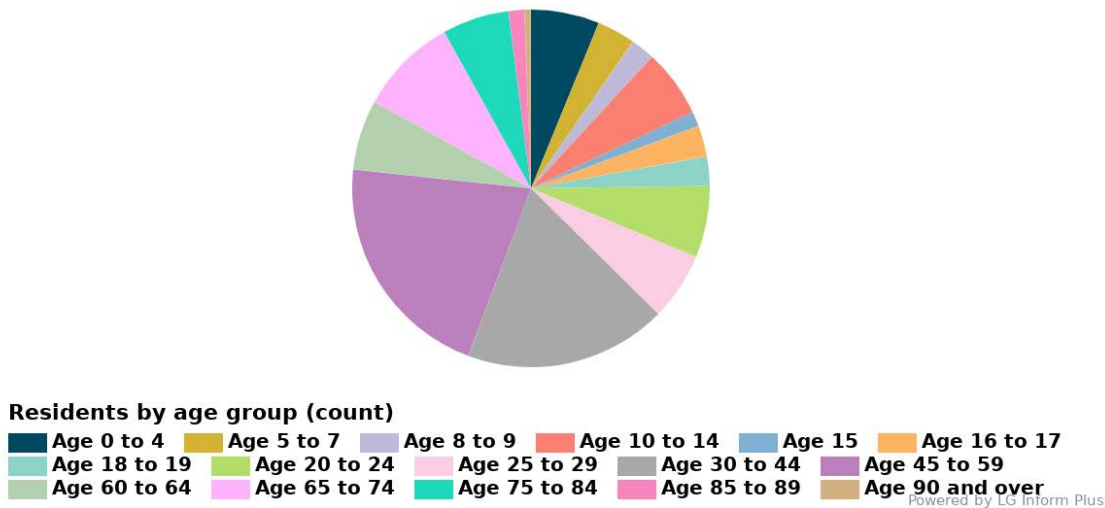
Fens & Greatham ward has the highest number of people aged 65 and over representing 12.89% of the total population of the Ward.

	Population aged 0-15	Population aged 16-64	Population aged 65 and over (count)	Total population
	2019	2019	2019	2019
	People	People	People	People
Burn Valley	1,517	5,147	1,590	8,254
De Bruce	1,799	4,927	1,539	8,265
Fens & Greatham	830	3,514	1,919	6,263
Foggy Furze	1,539	5,234	1,747	8,520
Hart	1,598	4,942	1,253	7,793
Headland & Harbour	1,534	5,431	1,517	8,482
Manor House	2,040	5,188	1,358	8,586
Rossmere	1,661	4,655	1,358	7,674
Rural West	1,027	3,858	1,657	6,542
Seaton	1,244	4,237	1,683	7,164
Throston	1,547	4,762	1,302	7,611
Victoria	1,659	5,575	1,275	8,509
Hartlepool	17,995	57,470	18,198	93,663

Age structure within Hartlepool

For Hartlepool as a whole, the largest proportion of residents are aged between 30 and 59.

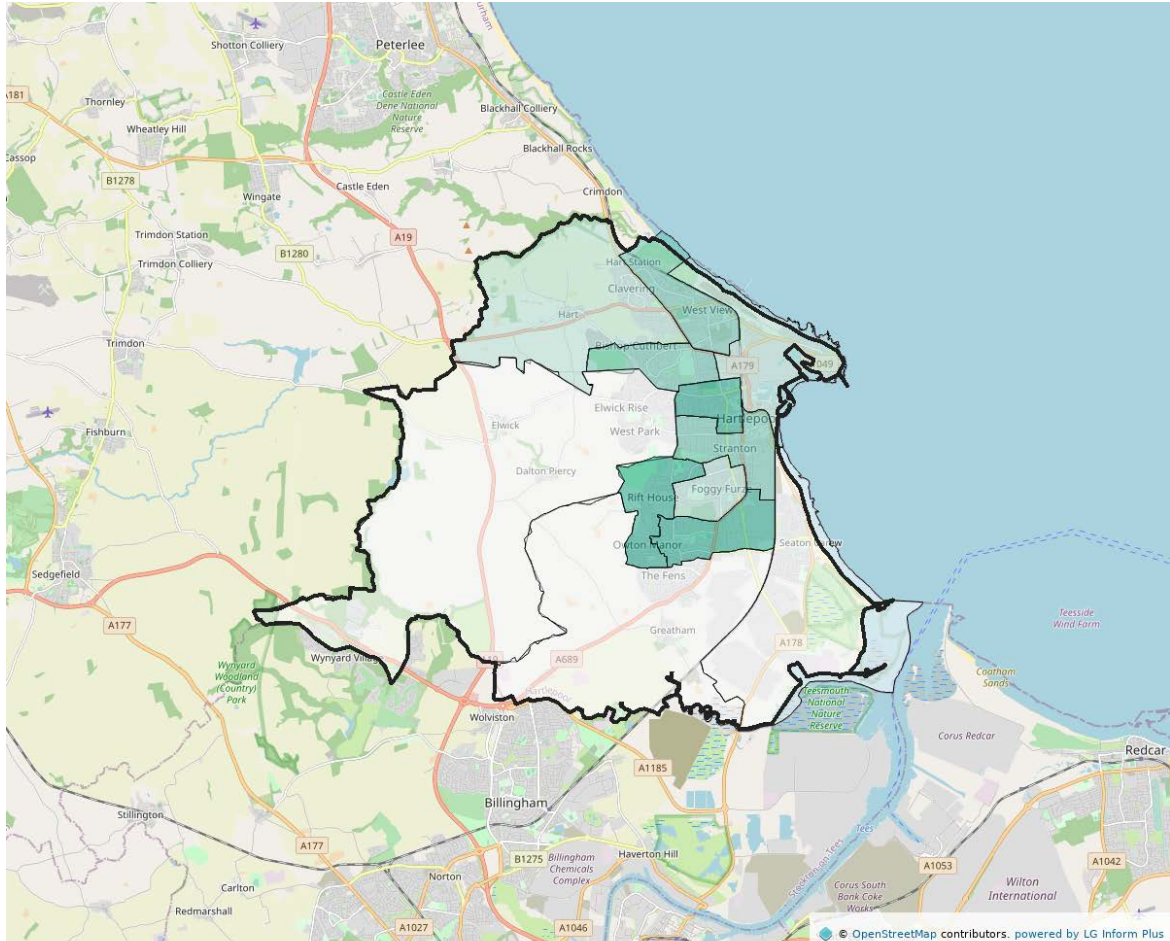
Residents by age group (count) (ONS population count) for Hartlepool



Households with Dependent Children

This map shows numbers of households with dependent children for all Wards in Hartlepool.

Manor House is the ward with the highest number of households ([1,232](#)) with dependent children in the unitary and Fens & Greatham is the ward with the lowest number of households with dependent children ([701](#)).



Dependent children: All ages (2011)

- $\geq 1,116 \leq 1,232$
- $\geq 1,084 < 1,116$
- $\geq 906 < 1,084$
- $\geq 701 < 906$

Ethnicity

This table shows the ethnic mix of each ward in Hartlepool.

Victoria ward has the highest number of Asian / Asian British residents and Black / African / Caribbean /Black British residents in Hartlepool.

	Resi- dents who are White	Residents who are Mixed/multi- ple ethnic groups	Residents who are Asian/Asian British	Residents who are Black/African/ Caribbean/Black British	Residents who are Other ethnic group
	2011	2011	2011	2011	2011
	People	People	People	People	People
Burn Val- ley	8,168	61	234	22	14
De Bruce	7,833	39	40	16	4
Fens & Greatham	6,576	20	18	2	3
Foggy Furze	8,353	41	40	10	15
Hart	6,382	46	93	6	4
Headland & Har- bour	8,153	70	115	13	7
Manor House	8,270	50	87	1	7
Ross- mere	7,693	44	50	1	5
Rural West	5,972	32	133	15	7
Seaton	6,792	35	25	6	7
Throston	7,488	47	101	10	7
Victoria	8,219	65	368	68	25
Hartle- pool	89,899	550	1,304	170	105

Ethnicity and language in Hartlepool

In 2011, the latest period for which data is currently available, Hartlepool had a black and minority ethnic population of [2,129](#) people. This was [2.3%](#) of the total population, and compares with [14.6%](#) for England, and [4.7%](#) for the North East region.

Overall [3.3%](#) of residents in Hartlepool describe themselves as from a non white UK population. This compares with a non white UK population of [6.4%](#) for the the North East region, and [20.3%](#) for England. This is the population who do not describe themselves as being white English, Welsh, Scottish, Northern Irish or British. In Hartlepool the non white UK population includes [3,104](#) people.

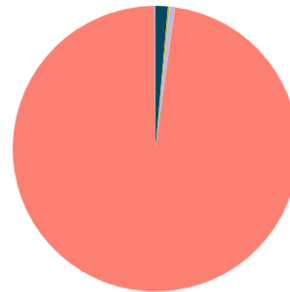
[0.4%](#) of the population in Hartlepool report that they cannot speak English well or at all. This is [370](#) people. This compares with [1.7%](#) for England, and [0.6%](#) for the North East region.

Victoria has the largest black and minority ethnic (BME) population in Hartlepool totalling [526 people](#), and Victoria has the largest population describing themselves as non White UK totalling [709 people](#).

Housing

This section describes the housing situation in each ward in Hartlepool including factors such as tenure and overcrowding.

Residents by ethnicity (count) (Count) for Hartlepool



Residents by ethnicity (count)

Residents who are Asian/Asian British
Residents who are Black/African/Caribbean/Black British
Residents who are Mixed/multiple ethnic groups
Residents who are White
Residents who are Other ethnic group

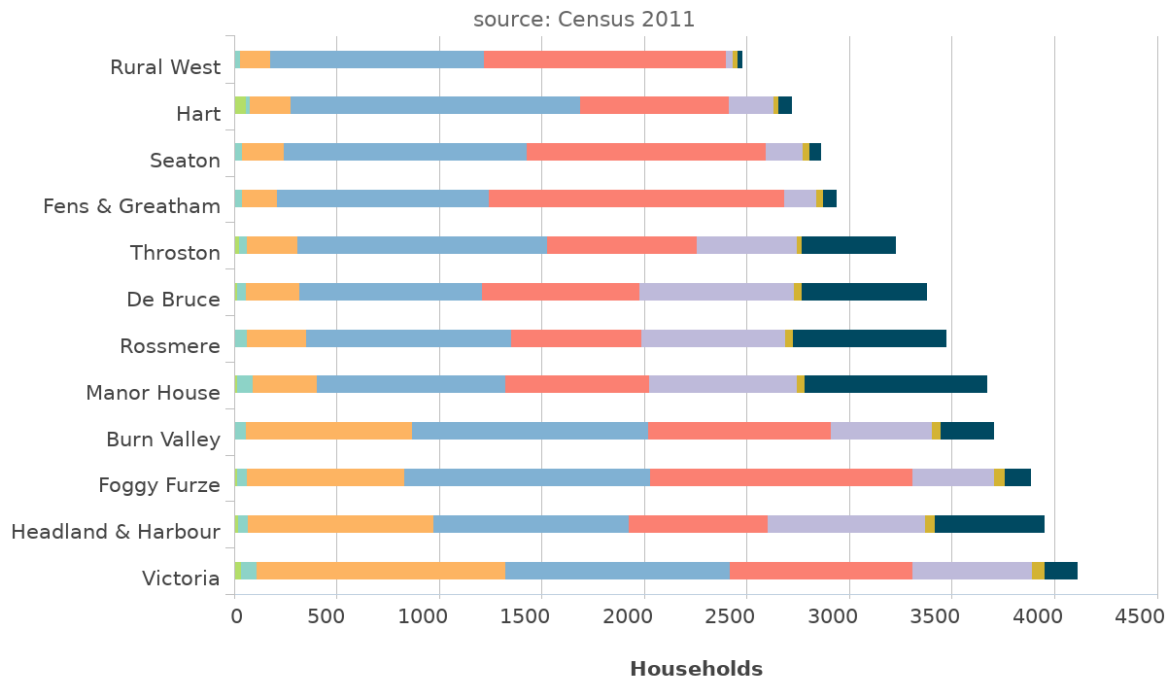
Powered by LG Inform Plus

Housing

In 2011 there were [40,434](#) households in Hartlepool and this chart shows the households of each ward in Hartlepool broken down by tenure. Manor House ward has [894](#) households rented from the council, which is the highest number for any ward in Hartlepool.

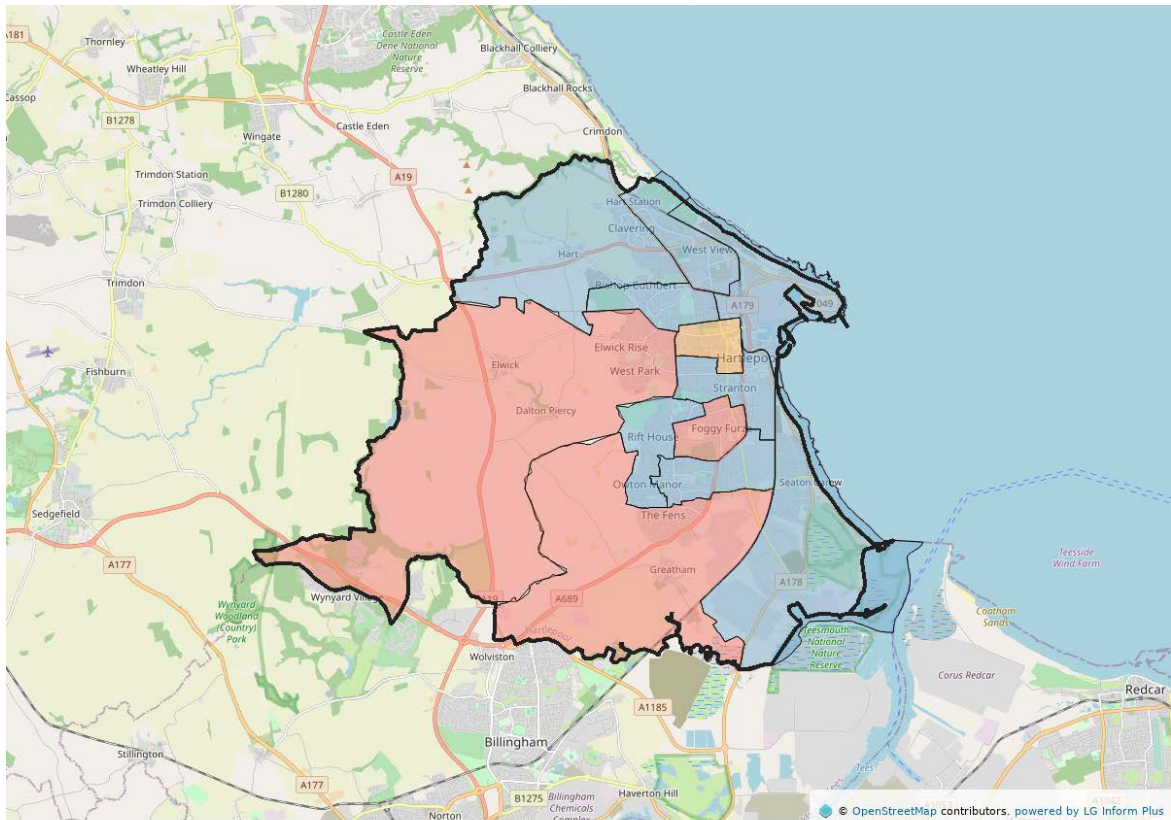
Headland & Harbour ward has [770](#) households of other types of social renting, which is the highest number for any ward in Hartlepool.

Households by tenure (count) (Count) (2011) for Wards of Hartlepool (Unitary)



Powered by LG Inform Plus

This map highlights the predominant tenure of housing in each ward.



2011

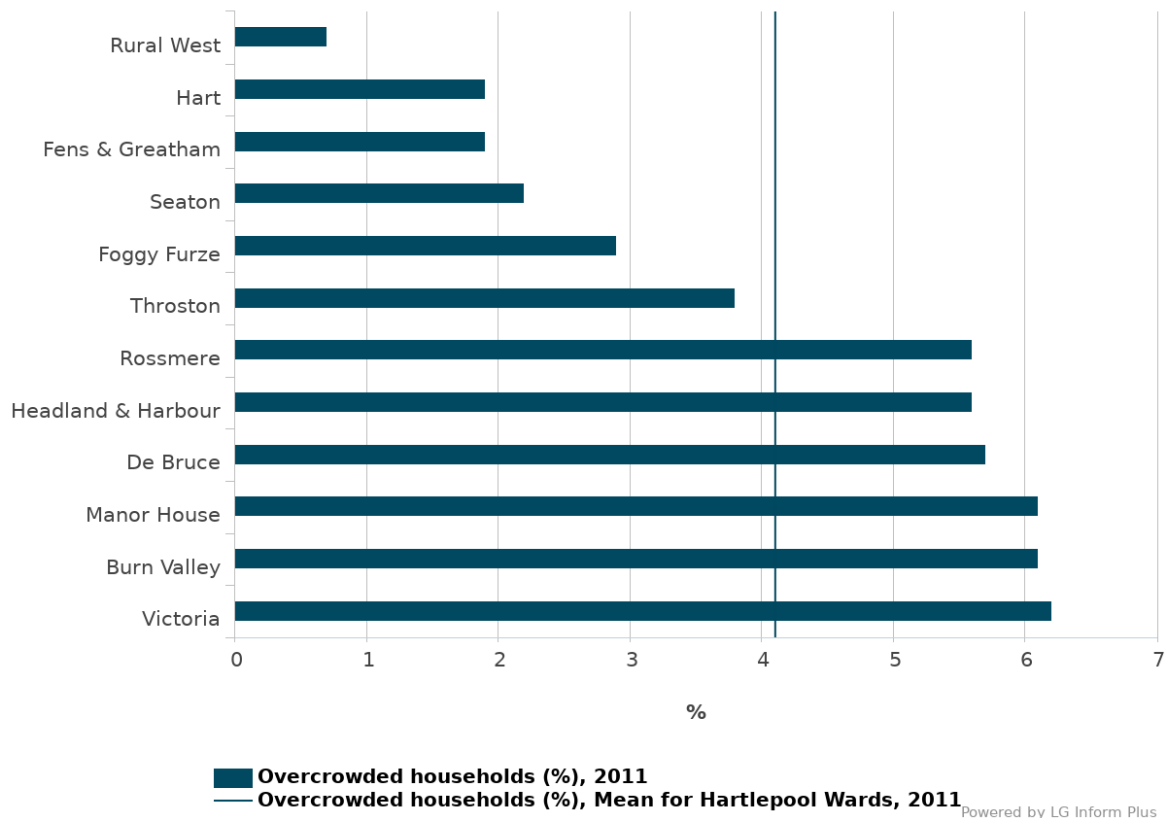
- Households owned outright (%)
- Households owned with a mortgage or loan (%)
- Households rented from private landlord or letting agency (%)

Overcrowding

This indicator shows the percentage of households that are deemed to be overcrowded. This is defined as having at least 1 room too few for the size of the household. Within Hartlepool [4.3%](#) of households are overcrowded, or [1,744](#) households. This compares with [5.1%](#) for the North East region, and [8.7%](#) for England.

Within Hartlepool, Rural West has the lowest proportion of overcrowded households at [0.7%](#) ([17 households](#)). Victoria has the highest proportion at [6.2%](#) ([256 households](#)).

Overcrowding - percentage of households with 1 or more rooms too few (%) (2011) for Wards of Hartlepool (Unitary)
source: Census 2011



Economy

This section looks at the economic picture in Hartlepool, including factors like educational attainment and unemployment.

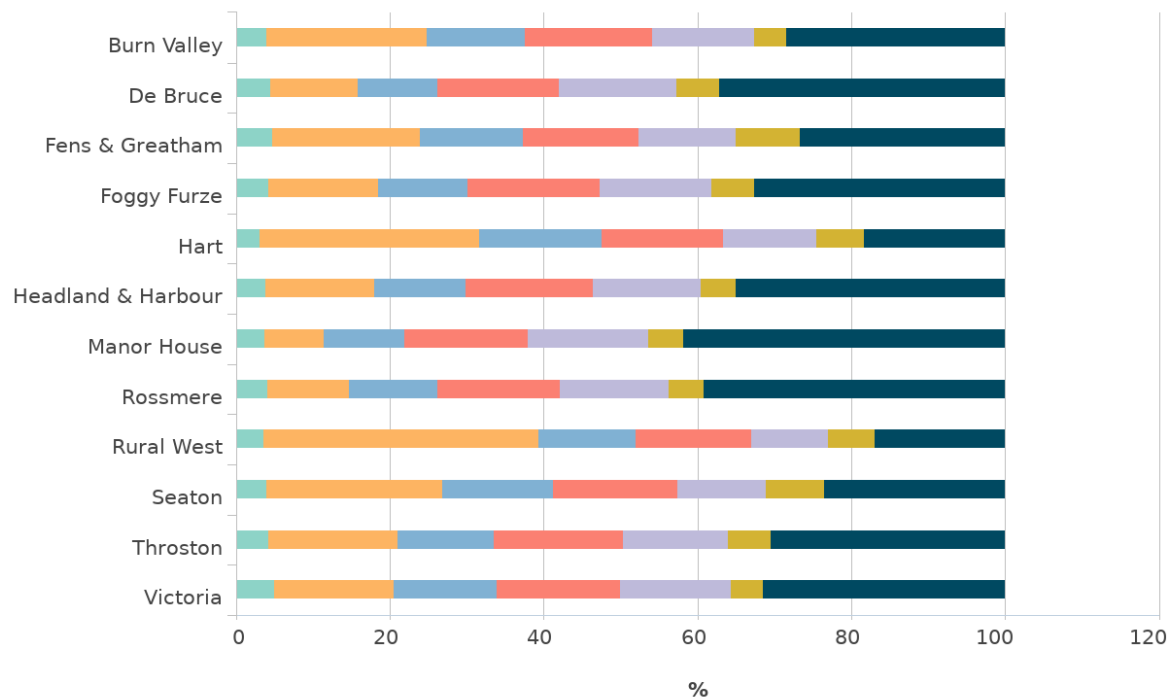
Education

The 2011 Census recorded the educational achievement of residents; this chart shows the proportion of residents with each level of qualification split by each ward.

Manor House ward has the highest percentage of residents in Hartlepool who have no qualifications ([41.88%](#)) compared to [30.66%](#) for Hartlepool as a whole. Rural West ward has the highest percentage of residents with a Level 4 or above qualification (35.83%).

**Residents by educational qualifications (%) (Percentage of ONS population count) (2011)
for Wards of Hartlepool (Unitary)**

source: Census 2011

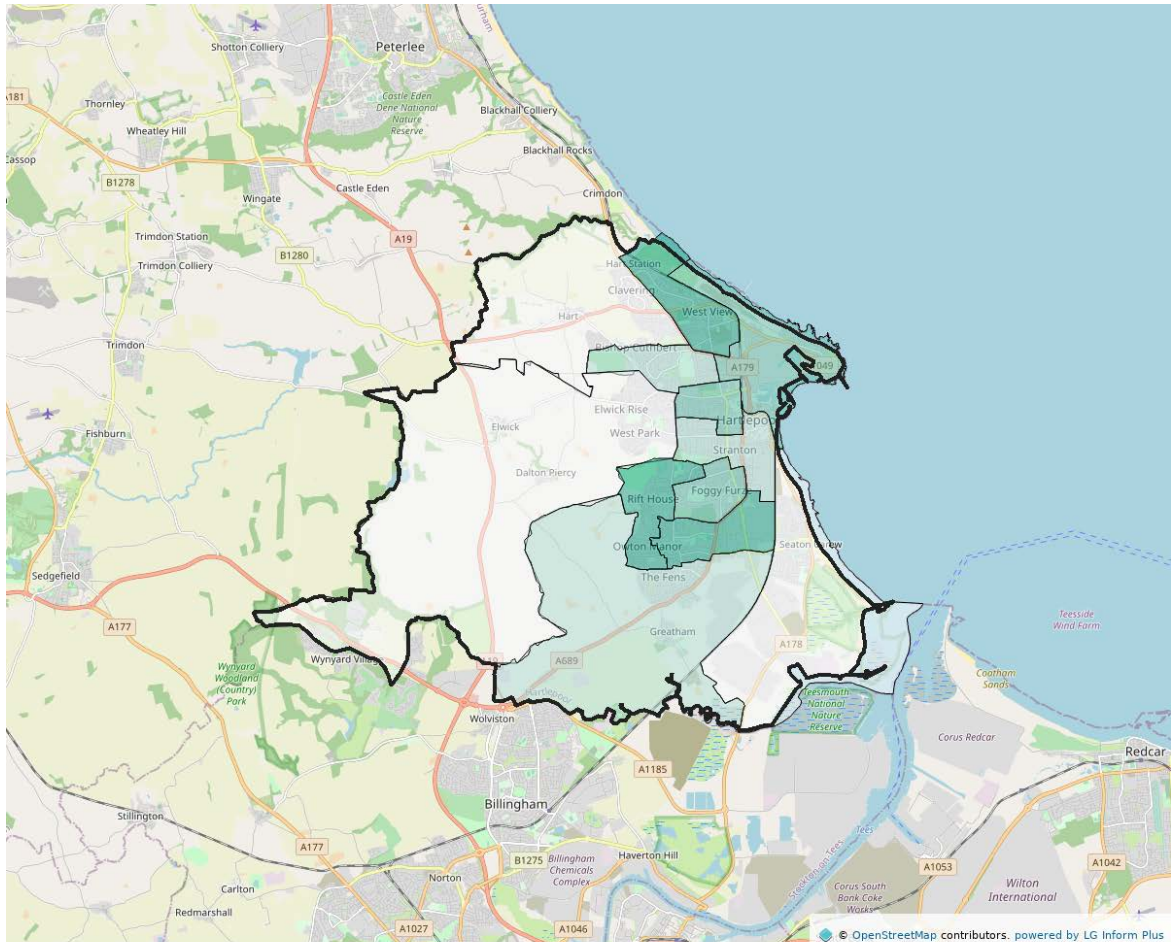


■ No qualifications (%), 2011
 ■ Apprenticeship (%), 2011
 ■ Level 1 qualifications (%), 2011
 ■ Level 2 qualifications (%), 2011
 ■ Level 3 qualifications (%), 2011
 ■ Level 4 qualifications and above (%), 2011
 ■ Other qualifications (%), 2011

Powered by LG Inform Plus

Percentage of residents with no qualifications

The map shows a breakdown of the proportion of residents with no qualifications living in each ward. The darker the shade, the higher the proportion of residents in that area.



No qualifications (%) (2011)

- $\geq 35.52 \leq 41.88$ %
- $\geq 30.95 < 35.52$ %
- $\geq 25.87 < 30.95$ %
- $\geq 16.94 < 25.87$ %

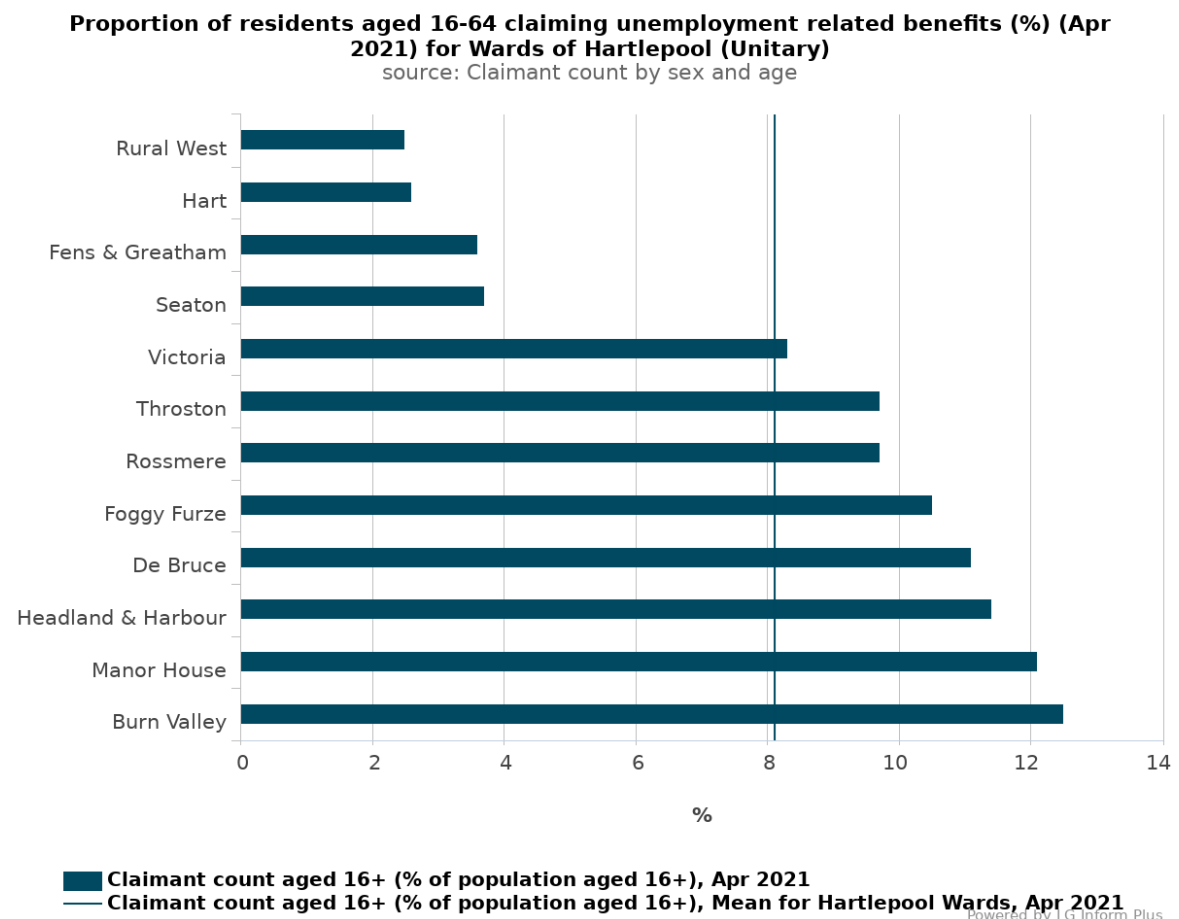
Unemployment by ward

There is strong evidence to suggest that work is generally good for physical and mental health and wellbeing, taking into account the nature and quality of the work and its social context, and that worklessness is associated with poorer physical and mental health. This metric is the proportion of residents aged 16-64 claiming unemployment benefits principally for the reason of being unemployed.

The Overall employment rate (aged 16-64) in Hartlepool was [67.1%](#) in 2020 Q4 (12 months ending) compared to [71.5%](#) in North East and [75.7%](#) in England.

Burn Valley ward has the highest percentage of residents in Hartlepool who are claiming unemployment benefit.

The bar chart below shows the percentage claiming unemployment benefit for each ward against the average for Hartlepool.



Poverty and Deprivation

This section will look at deprivation in Hartlepool. It uses data from the Index of Multiple Deprivation along with poverty datasets such as the number of children and old people living in poverty, households which do not have central heating and households living in fuel poverty.

Index of Multiple Deprivation

The Index of Multiple Deprivation IMD is the official measure of deprivation in small areas in England. It shows how deprived an area is compared to other areas (relative deprivation). It uses data from a range of sources to calculate an overall score and rank for different deprivation factors (called domains). These domains include things like how much people earn, what level of education they have, what level of services they have access to and how much crime takes place in their neighbourhood. How deprived somewhere is, therefore, depends on multiple factors not just the levels of income of the residents.

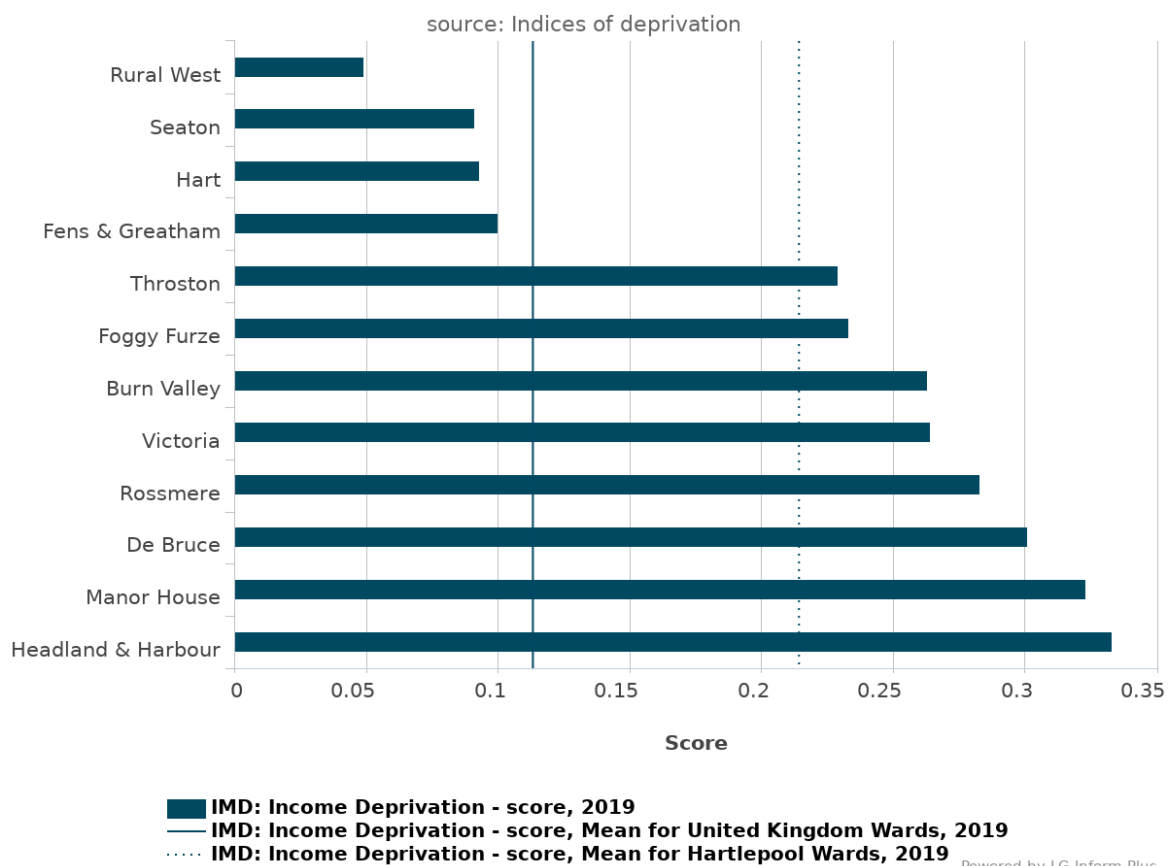
We have produced a series of factsheets about the IMD and what it tells us about Hartlepool which can be accessed from the intranet at <http://hbcintranet/Pages/Information-research-and-intelligence.aspx>.

Deprivation in Hartlepool - Income deprivation

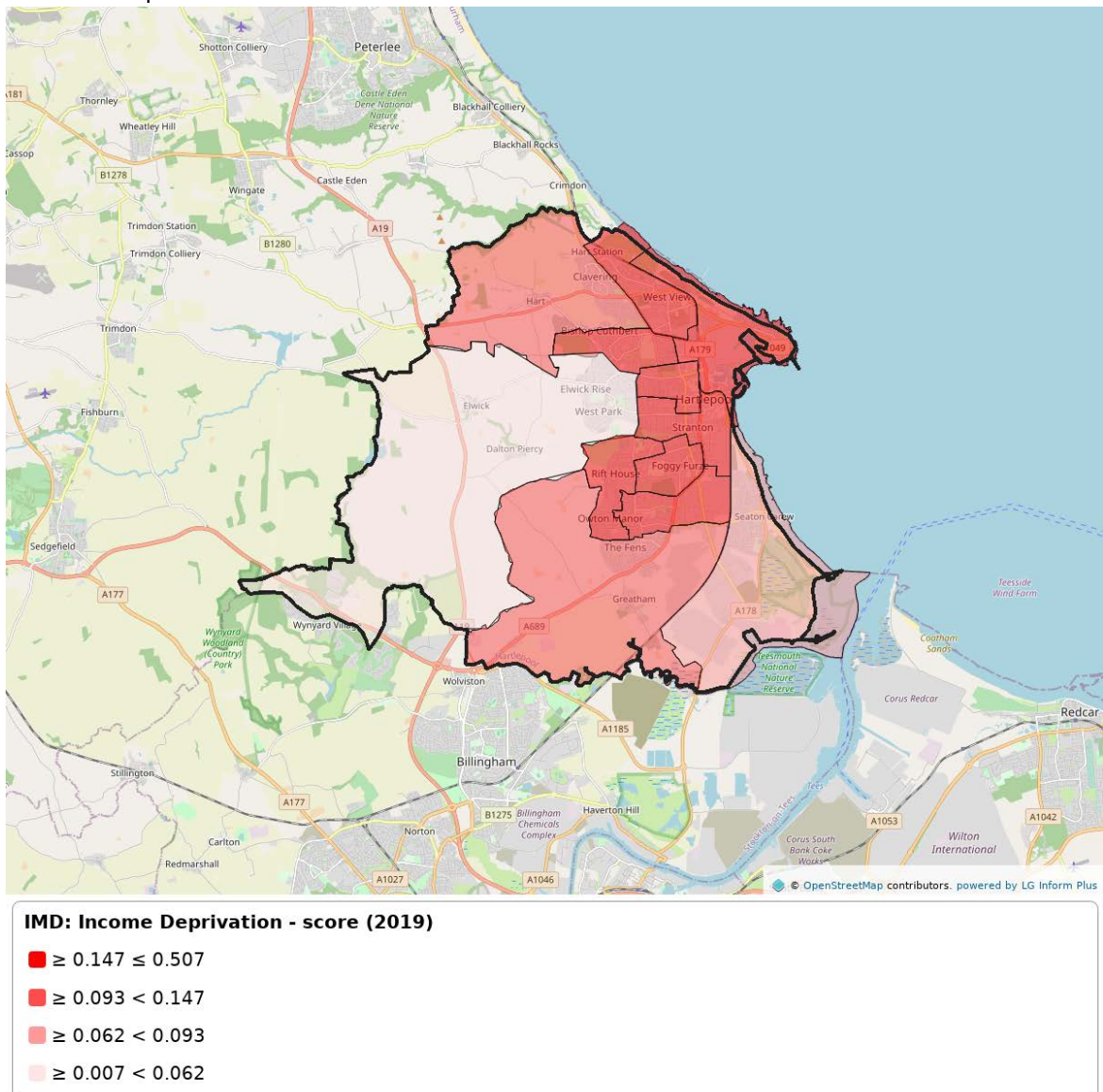
The Income Deprivation Domain of the Indices of Multiple Deprivation (IMD) 2019, measures the proportion of the population experiencing deprivation relating to low income. The definition of low income used includes both those people that are out-of-work, and those that are in work but who have low earnings (and who satisfy the respective means tests). The difference in deprivation between areas is a major determinant of health inequality in the UK. Many studies and analyses have demonstrated the association of increasingly poor health with increasing deprivation. For instance, all-cause mortality, smoking prevalence, self-reported long standing illness are all correlated with deprivation. If deprivation inequalities decrease, health inequalities are likely to decrease also.

The Income Deprivation Domain score for Hartlepool is [0.228](#). Within Hartlepool this varies from 0.049 in Rural West to 0.333 in Headland & Harbour. The mean for all wards in England is 0.113. The higher the score, the more deprived an area is relative to other areas in England.

IMD - Income Deprivation - score (score) (2019) for Wards of Hartlepool (Unitary)



This map shows the IMD Income Deprivation score (2019) for wards in Hartlepool, relative to all other areas across England. A higher score (darker colour) signifies higher levels of deprivation.



Children and older people living in poverty

The next chart shows the Income Deprivation Affecting Children Index (IDACI, 2019). This represents the percentage of children aged 0-15 living in families that are income deprived. This includes those in receipt of income support, income based jobseeker's allowance or pension credit, or those not in receipt of these benefits but in receipt of Child Tax Credit with an equivalised income (excluding housing benefits) below 60% of the national median before housing costs. The IDACI score for Hartlepool overall is [0.283](#). Within Hartlepool this varies from 0.053 in Rural West to 0.413 in Headland & Harbour. The average for all English wards is 0.144.

The second chart shows the Income Deprivation Affecting Older People Index (IDAOPI,

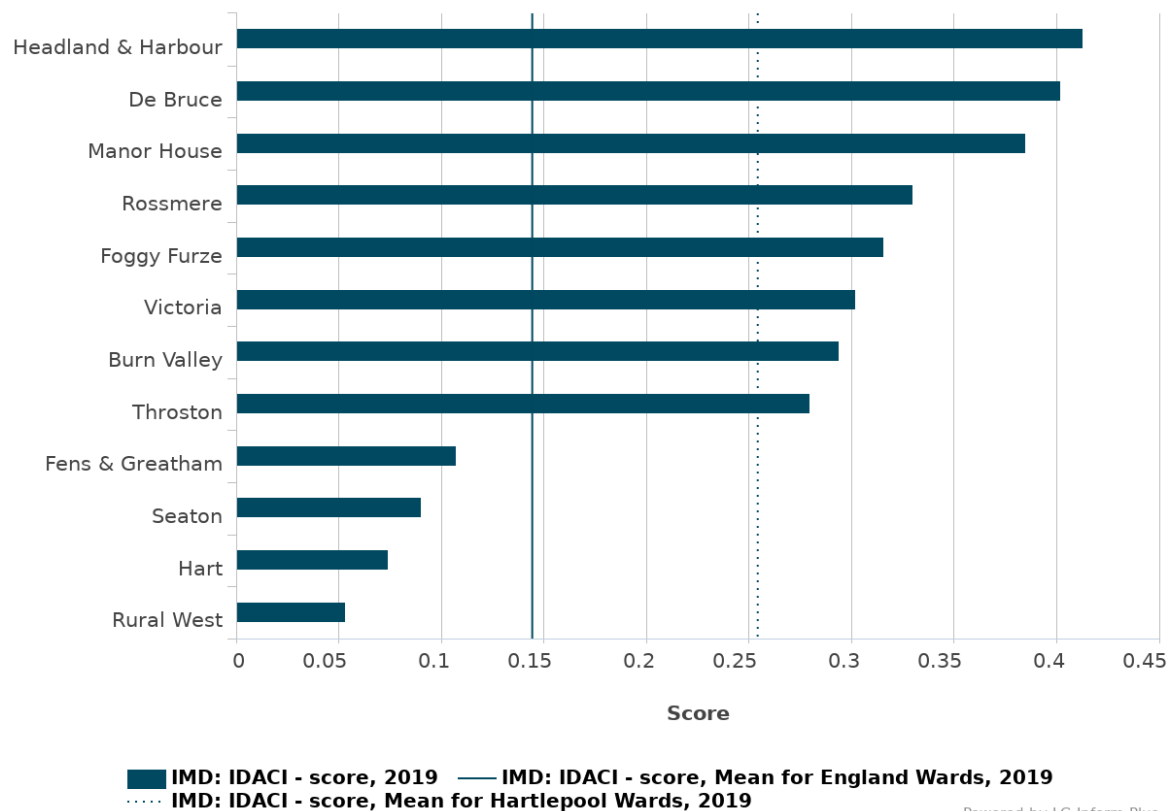
2019). This is based on the percentage of the population aged 60 and over who receive income support, income based job seekers allowance, pension credit or child tax credit. Hartlepool has an IDAOPI score of [0.228](#). Within the area, this varies from 0.070 in Rural West to 0.344 in Headland & Harbour. The average for all English wards is 0.137.

Again, the higher the score, the more deprived an area is relative to the rest of England.

Proportion of children living in poverty

IMD - Income Deprivation Affecting Children Index (IDACI) - score (score) (2019) for Wards of Hartlepool (Unitary)

source: Indices of deprivation

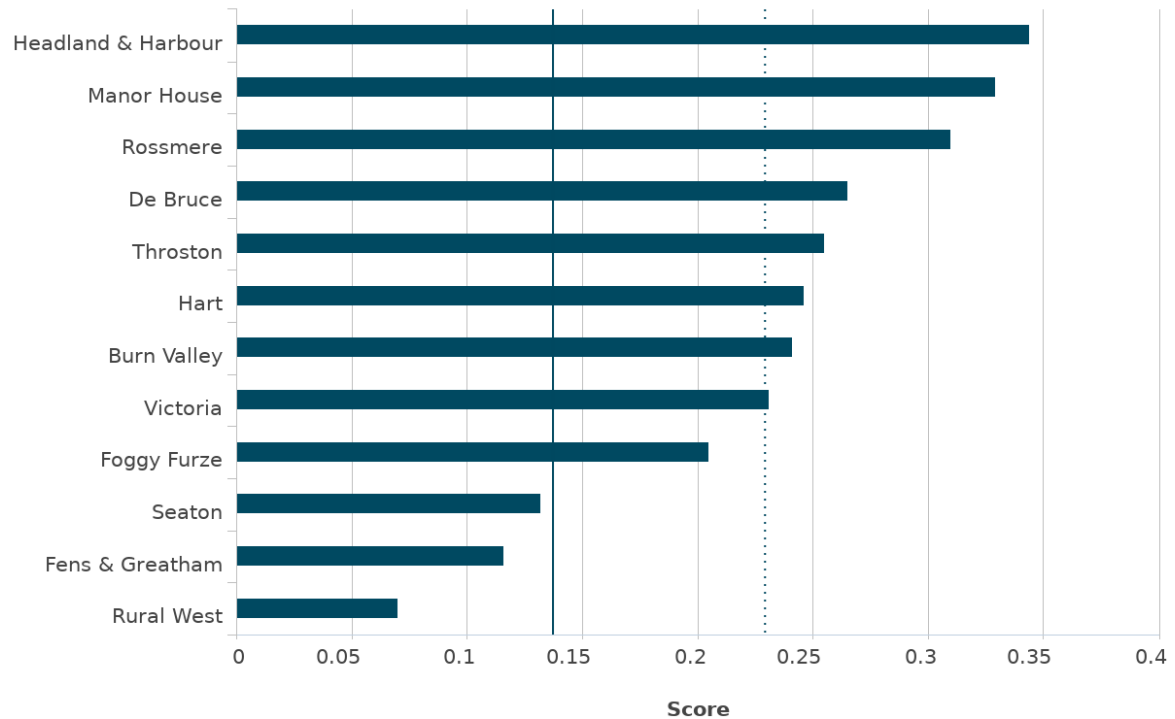


Powered by LG Inform Plus

Proportion of older people living in poverty

IMD - Income Deprivation Affecting Older People Index (IDAOPI) - score (score) (2019) for Wards of Hartlepool (Unitary)

source: Indices of deprivation



■ IMD: IDAOPI - score, 2019
 — IMD: IDAOPI - score, Mean for England Wards, 2019
⋯ IMD: IDAOPI - score, Mean for Hartlepool Wards, 2019

Powered by LG Inform Plus

Pensioners who live alone

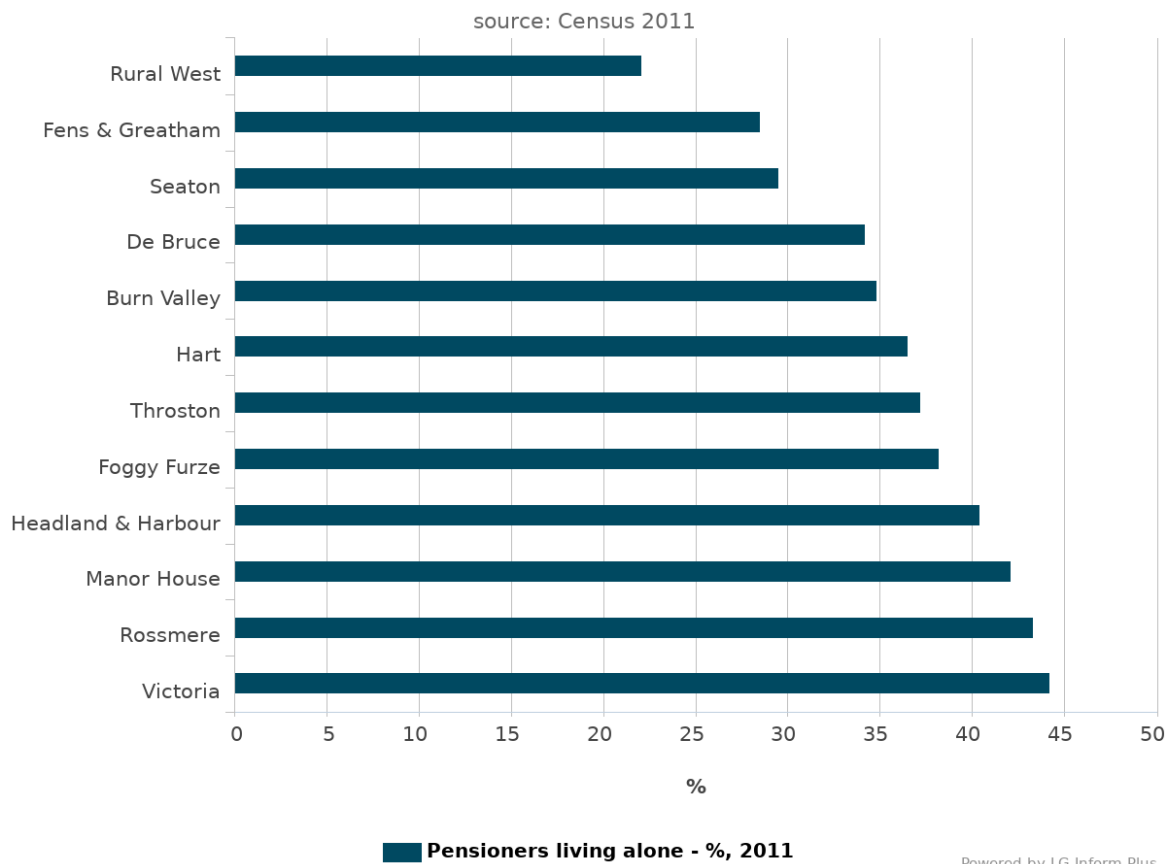
This indicator is the percentage of pensioners who live alone. Social isolation, loneliness and higher levels of deprivation are all linked to pensioners who live alone.

Within Hartlepool [35.5%](#) of pensioners live alone, or [5,544](#) people. This compares with [33.9%](#) for the North East region, and [31.5%](#) for England.

Broken down by ward, Rural West has the lowest proportion of pensioners living alone at [22.1%](#). Victoria has the highest proportion at [44.2%](#).

In terms of actual numbers, Rural West has the lowest number of pensioners living alone at [300 households](#). Manor House has the highest at [582 households](#).

% of pensioners who live alone (%) (2011) for Wards of Hartlepool (Unitary)



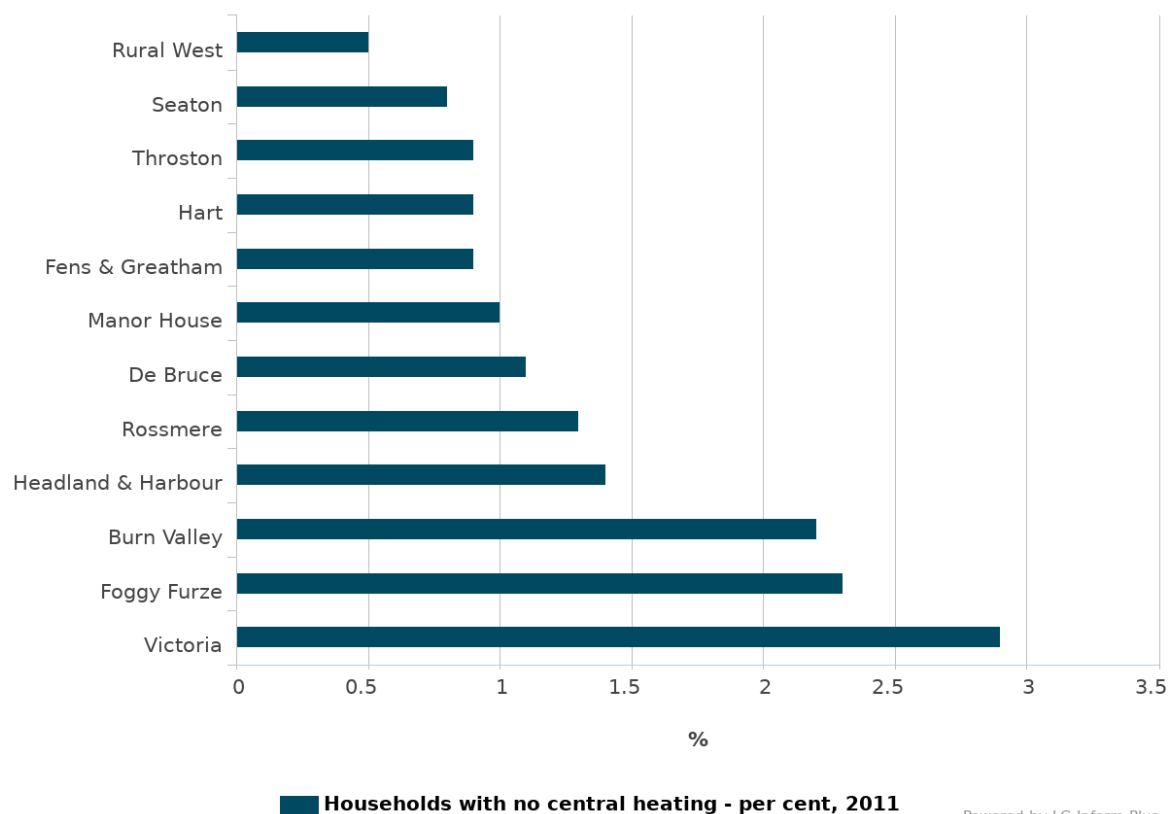
Households with no central heating

[1.4%](#) or [580](#) households are without central heating in Hartlepool. This compares with [1.2%](#) for the North East region, and [2.7%](#) for England.

Within Hartlepool, Rural West has the lowest proportion of households without central heating at [0.5%](#) ([12 households](#)). Victoria has the highest proportion at [2.9%](#) ([120 households](#)).

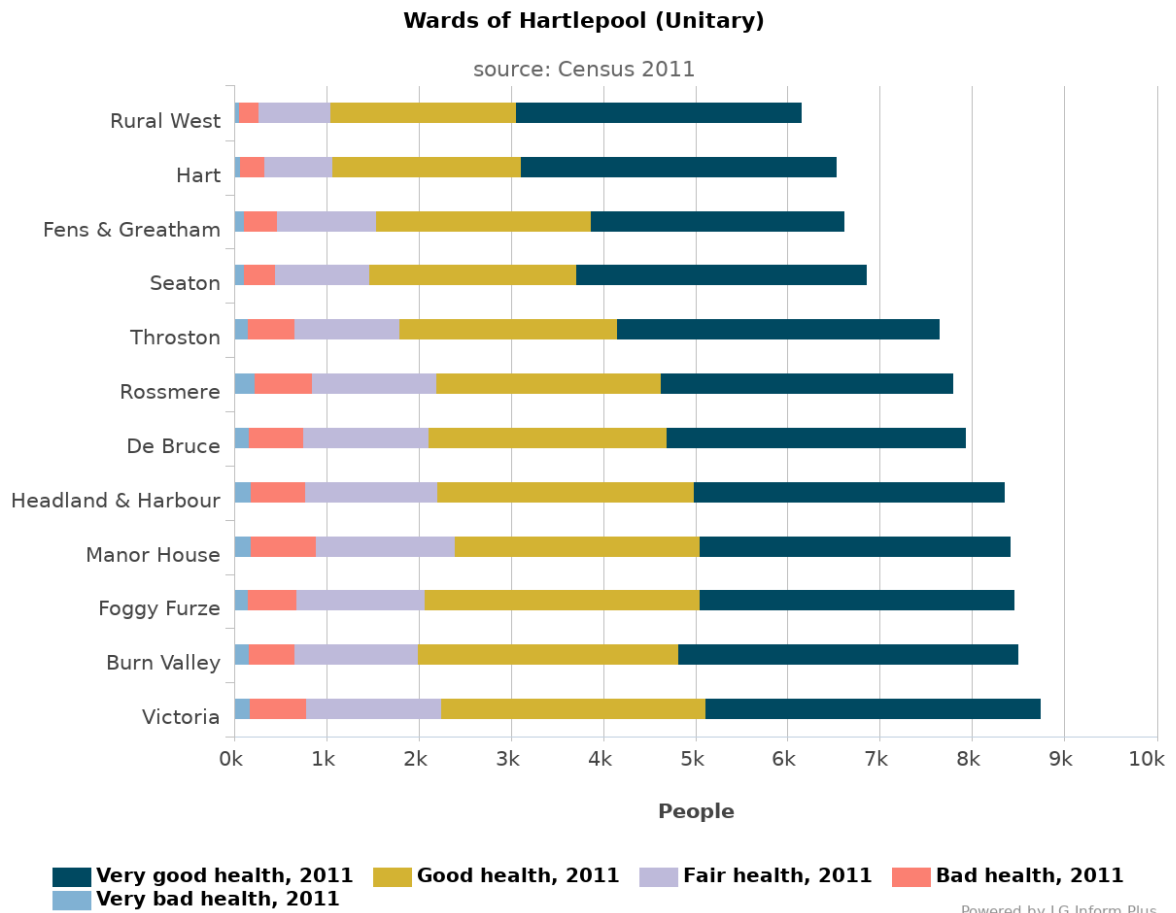
Household rooms and heating - Does not have central heating - percentage of ONS household count (%) (2011) for Wards of Hartlepool (Unitary)

source: Census 2011



Health

This chart shows the general health of residents by each ward in Hartlepool, as self-reported in the last Census. Rossmere ward has the highest percentage of residents in Hartlepool who report they are in very bad health ([2.9%](#)).



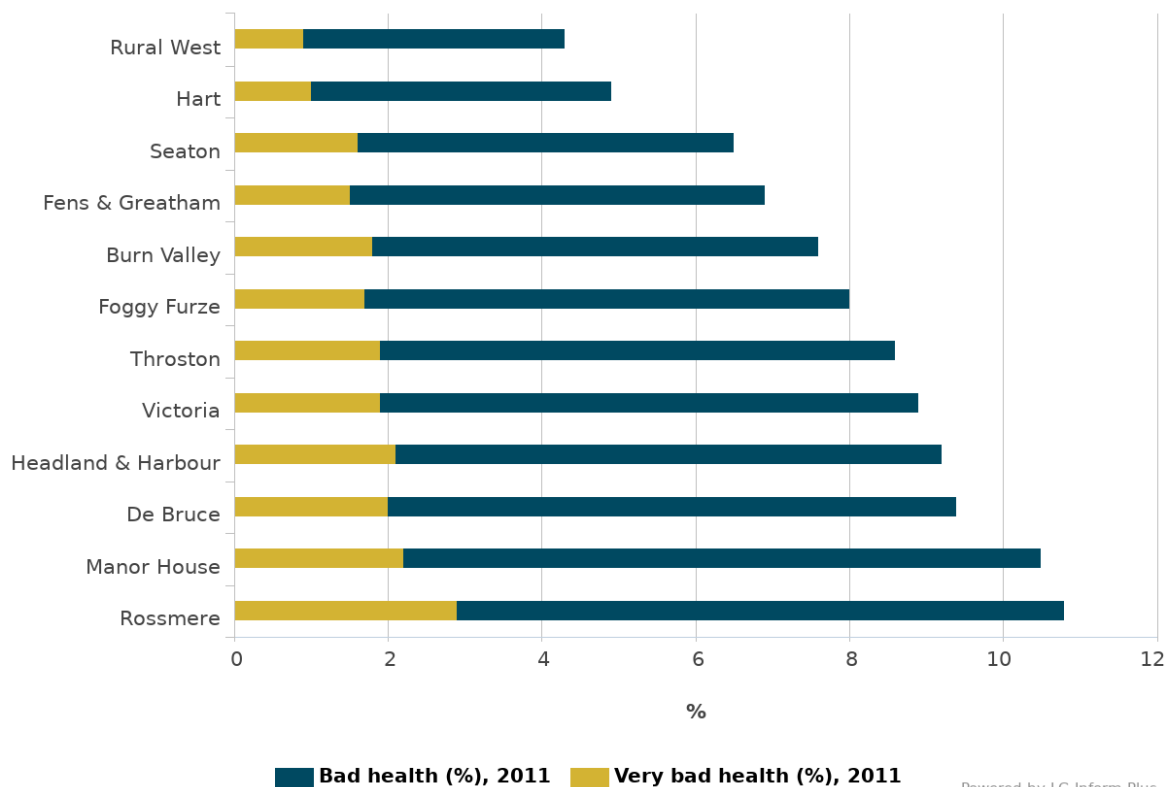
Percentage of population living with bad or very bad health

This chart shows the percentage of people in each ward who reported their general health as bad or very bad. The percentage of people in Hartlepool reporting their health as bad or very bad is [8.1%](#), or [7,488](#) people. This includes [5,789](#) people ([6.3%](#)) who report their health as bad, and [1,699](#) people ([1.9%](#)) who report their health as very bad.

This compares with [7.4%](#) for the North East region, and [5.5%](#) for England reporting their general health as bad or very bad.

Within Hartlepool, Rural West has the lowest percentage of residents reporting their health as bad or very bad at [4.3%](#). Rossmere has the highest percentage of residents reporting their health as bad or very bad at [10.8%](#).

Health of the population - Bad health - percentage of ONS population count (%) (2011) and Health of the population - Very bad health - percentage of ONS population count (%) (2011) for Wards of Hartlepool (Unitary)



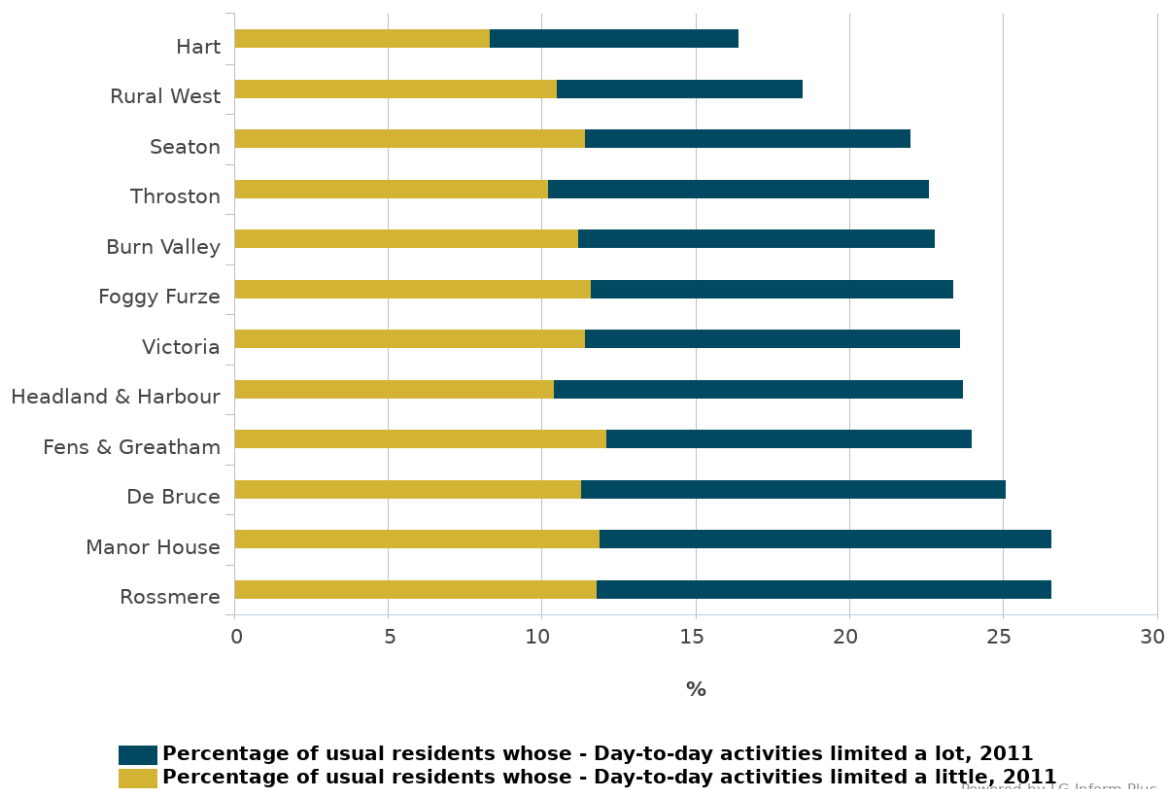
Percentage of the population whose day to day activities are limited by long term illness or disability

This shows the percentage of people in each ward who reported that their day to day activities are limited by a long term illness or disability. The percentage of people in Hartlepool reporting their day to day activities as limited a lot is [12.1%](#) ([11,137](#) people). In addition, [11.1%](#) ([10,178](#) people) reported that their activities were limited a little.

This means [23.2](#) per cent of the population of Hartlepool say that their day to day activities are limited due to their health, affecting [21,315](#) people. This compares with [21.6%](#) for the North East region, and [17.6%](#) for England reporting their day to day activities are limited a little or a lot by their health.

Within Hartlepool, Hart has the lowest percentage of residents reporting that their day to day activities are limited a little or a lot by their health at [16.4%](#). Manor House has the highest percentage of residents reporting that their activities are limited at [26.7%](#).

Percentage of usual residents whose - Day-to-day activities limited a lot (%) (2011) and Percentage of usual residents whose - Day-to-day activities limited a little (%) (2011) for Wards of Hartlepool (Unitary)



References

This report was generated using data from:

[Ministry of Housing, Communities & Local Government; Indices of deprivation](#)

[Nomis; Annual Population Survey](#)

[Nomis; Claimant count by sex and age](#)

[Office for National Statistics; Census 2011](#)

[Office for National Statistics; Mid-year estimates](#)

[Office for National Statistics; Population projections: 2014-based projections](#)

[Public Health England; Local Health](#)