

# Hartbeat

August 2021



**Inside:**

COVID-19: Play your part

£25 million Town Deal approved

Shop Hartlepool

Hartlepool Waterfront Festival

[www.hartlepool.gov.uk](http://www.hartlepool.gov.uk)

 [hartlepoolcouncil](https://www.facebook.com/hartlepoolcouncil)

 [@HpoolCouncil](https://twitter.com/HpoolCouncil)

 [hartlepool\\_council](https://www.instagram.com/hartlepool_council)

 **HARTLEPOOL  
BOROUGH COUNCIL**



It's #NotTooMuchToMask

# Let's stop the virus from spreading

We can help to stop coronavirus from spreading out of control by making choices that reduce the risk of illness to ourselves and those around us.

## Join the campaign

Pledge to keep yourself and others safe by:

01

wearing a face mask to protect yourself and others

02



cleaning your hands regularly

03



getting both doses of the vaccine and encouraging friends and family to do the same

04



keeping indoor spaces well ventilated and meeting outdoors if you can

05



testing regularly, supporting contact-tracing measures, and self-isolating when required

## It's #NotTooMuchToMask

Share the campaign through social media

For more information, visit

[www.nhsconfed.org/not-too-much-to-mask](http://www.nhsconfed.org/not-too-much-to-mask)



@NHSConfed

# Welcome to the August edition of Hartbeat

It was recently announced Hartlepool – along with the rest of the North East – has been identified as an Enhanced Response Area following a surge in Coronavirus cases.

Enhanced Response Areas are aimed at slowing down the rate of infections and allowing time for more people to get both vaccinations.

As this edition of Hartbeat went to print, the detail of the Government's support package was still being worked on but it will certainly include assistance to roll out more localised vaccine delivery.

Hartlepool becoming an Enhanced Response Area is a clear reminder the virus is still very much with us and reminds us just how important it is that we all continue to exercise caution and protect those that we love.

You can find out more about how you can help stop the spread on pages four and five.

It's been good to see that – despite the lifting of requirements – many people across Hartlepool are continuing to wear a face covering in busy indoor spaces and on public transport as we know these provide effective protection.

Continuing to wash and sanitise your hands regularly and allowing fresh air to circulate indoors will also help to reduce infections.

We want to close by again saying thank you for the significant sacrifices people across Hartlepool have made since the onset of the Coronavirus pandemic. We know it hasn't been easy and we are truly grateful for the significant steps people have taken to protect both themselves and the people they love.



**Councillor Shane Moore**  
Leader of the Council



**Denise McGuckin**  
Managing Director

## Not yet been vaccinated?

Vaccination is the best way to protect yourself and those you love against COVID.

Look out for walk-in vaccination clinics in Hartlepool. See the Council's social media or visit [www.hartlepool.gov.uk](http://www.hartlepool.gov.uk) for updates.



**BEACH SAFETY | 06**



**£25 MILLION TOWN DEAL | 07**



**HUFC | 09**



**SUMMER EVENTS | 10**



**YOUTH HUB | 14**



# Coronavirus: please stay safe and help prevent the spread

As COVID-19 restrictions are lifted, it is important that we all use personal judgement to manage our own risk. All of us can play our part by exercising common sense and considering the risks. While no situation is risk free, there are actions we can take to protect ourselves

and others around us. Following this guidance will help you stay safe and protect others by controlling the spread. Every action to help reduce the spread will reduce any further resurgence of the virus in the coming months.

## Get your jabs

Anyone who gets COVID can become seriously ill or have long-term effects - long COVID - including young people.

The COVID vaccines are the best way to protect yourself and others, so please get your jabs.

They reduce your risk of getting seriously ill or dying from COVID, cut your risk of catching or spreading it and help protect you against variants. You need to get both doses for maximum protection.

All adults aged 18 or over can get vaccinated - you don't need to wait to be contacted.

It's especially important for young people to get their jabs - nationally, infection rates among those in their 20s have been running at very high levels.

Book your jab at [www.nhs.uk/coronavirus-vaccination](http://www.nhs.uk/coronavirus-vaccination) or call 119.

## Look out for walk-in vaccination clinics too

If you haven't yet been vaccinated, watch out for walk-in vaccination clinics running in Hartlepool.

Keep an eye on the Council's social media or check the news section at [www.hartlepool.gov.uk](http://www.hartlepool.gov.uk) for updates.



## Your vaccine questions answered

### Will it affect my fertility?

The Royal College of Obstetricians & Gynaecologists and the Royal College of Midwives have both clearly stated that there is no evidence that the COVID-19 vaccines will affect fertility.

There's no evidence the vaccine has any effect on the chances of becoming pregnant and there's no need to avoid pregnancy after being vaccinated.

### Can I get vaccinated if I'm pregnant or breastfeeding?

The vaccines offer pregnant women the best protection against COVID, which can be serious in later pregnancy.

You can have a COVID vaccine if you are breastfeeding.

The vaccine can't give you or your baby COVID.

### I'm young - I don't need it

Younger people have been seriously ill and died too, with thousands more still suffering from Long COVID after what might have been a mild initial case. Getting vaccinated is one of the best things you can do to protect yourself.

For more questions and answers visit [www.hartlepool.gov.uk/vaccine-questions-answered](http://www.hartlepool.gov.uk/vaccine-questions-answered)

# Get yourself tested regularly

The Government is encouraging all adults to get tested twice a week – even after vaccination – because you can still spread COVID.

Regular testing helps identify virus variants and stops individual cases from becoming outbreaks.

## If you have COVID symptoms

Self-isolate and book a free PCR test at a Hartlepool PCR testing centre at [www.gov.uk/get-coronavirus-test](http://www.gov.uk/get-coronavirus-test) or call 119.

There are two local PCR testing centres, which are open every day:

- Hartlepool Waterfront (TS24 0XN).
- Sandy Car Park (former coach park) at Seaton Carew (TS25 1DD).

## If you DO NOT have symptoms

If you are 18 or over, drop in to get a free Lateral Flow Test at the COVID Test and Collect Centre, Middleton Grange Shopping Centre (ground floor near WHSmith), Monday to Friday.

You can also collect a free home testing kit at the centre to test yourself and your family at home (the tests are not suitable for pre-school and primary children).

If you are tested at the COVID Test and Collect Centre or in your own home, you will get your result by text within 24 hours and usually in two hours.



We'll also be knocking on residents' doors around town over the next few weeks, offering people free home testing kits – watch out for our testing kit hand-out van.

All our staff will carry full Hartlepool Borough Council photo identification.

If you test positive for COVID from a test at the COVID Test and Collect Centre or from a home testing kit, you must self-isolate and book a PCR test – see above.

## LET'S KEEP LIFE MOVING



FRESH AIR



TESTING



FACE COVERINGS



APP



HANDWASHING

# STAY SAFE AT THE BEACH

---

Following the tragic incident involving 14-year-old Matthew Sherrington, residents and visitors are being urged to take care near the water when visiting Hartlepool's beaches.

Whilst beaches can be great for a day out, they can also be dangerous and unpredictable. With this in mind, Hartlepool Borough Council is urging people who are planning a trip to the beach to check if it is safe for them to visit.

Councillor Tim Fleming, Chair of Hartlepool Borough Council's Adult and Community Based Services Committee, said: "Our thoughts are with Matthew's family at this very sad time.

"As more people are visiting our beaches it's important we remind and educate them about the potential dangers.

"In particular, Steetley is a beach which we would not recommend for anyone to swim at. The sea conditions may appear calm but the beach has a

number of hazards that are not visible. The water around the pier is a particular hazard as there are channels that cause very strong rip currents as well as sudden deep water and underground hazards.

"The best way to avoid rips and keep safe is to choose a lifeguarded beach and always swim between the red and yellow flags, which have been marked based on where it is safer to swim based on the sea conditions for that day."

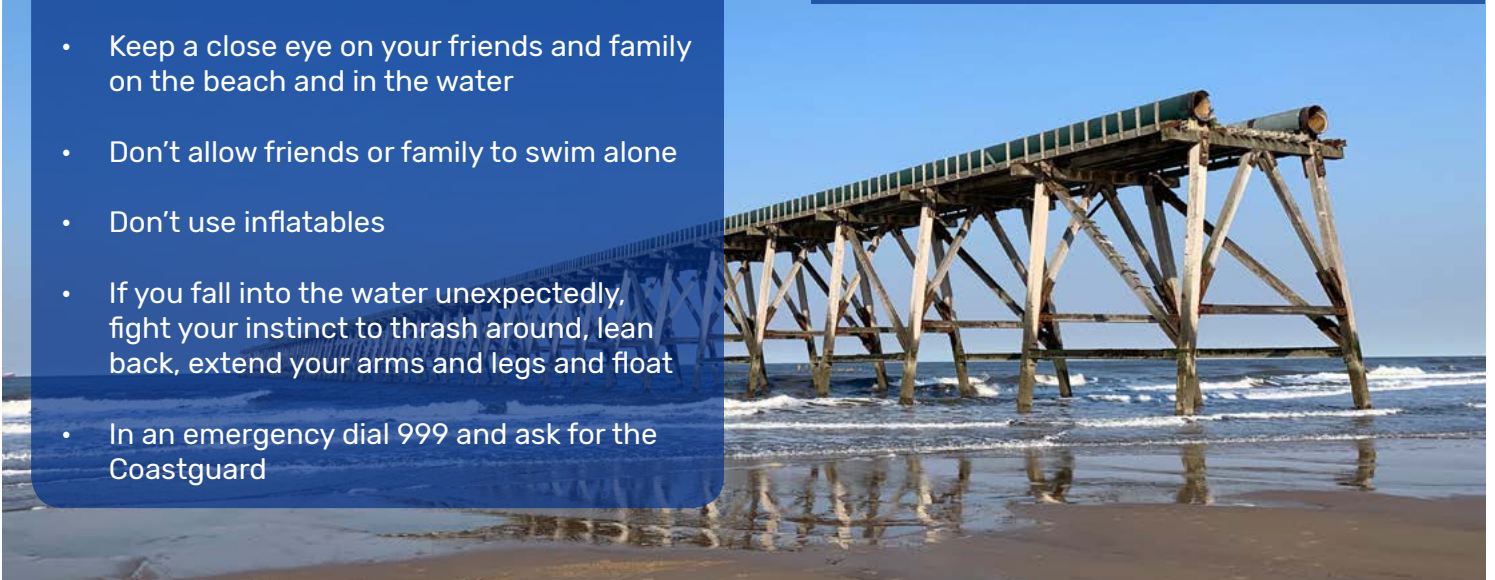


**Hartlepool Borough Council's beach lifeguards will be operational from 10am – 6pm until September 6th at Seaton Carew and the Headland, Fish Sands and Block Sands.**

## RNLI safety advice for anyone visiting a beach is:

- Have a plan – check the weather forecast, tide times and read local hazard signage
- Keep a close eye on your friends and family on the beach and in the water
- Don't allow friends or family to swim alone
- Don't use inflatables
- If you fall into the water unexpectedly, fight your instinct to thrash around, lean back, extend your arms and legs and float
- In an emergency dial 999 and ask for the Coastguard

Report a damaged or missing lifebelt:  
[www.hartlepool.gov.uk/lifebelt](http://www.hartlepool.gov.uk/lifebelt)



Further information can be found at [www.rnli.org/safety](http://www.rnli.org/safety)



# £25 MILLION TOWN DEAL APPROVED

The success of Hartlepool's bid for £25 million of Government regeneration funding has been hailed as a "game changer" with the potential to transform the town.

The Hartlepool Town Deal includes proposals for the re-imagining of the Middleton Grange Shopping Centre; supporting the restoration of the fire-damaged former Wesley Chapel; connectivity improvements to better link the marina, town centre and railway station; and health and civil engineering training institutes that will enable local people to develop new skills.

Hartlepool was one of 100 towns across England invited by the Government to develop innovative regeneration plans and potentially secure up to £25 million through the Government's Towns Fund initiative.

Councillor Shane Moore, Leader of Hartlepool Borough Council, said: "The Town Deal is a real game changer in terms of shaping the town's future, and its importance cannot be overstated. I'd like to thank everyone who has played a part in securing this money, their hard work and commitment to the town is much appreciated."

Councillor Paddy Brown, Chair of the Council's Economic Growth and Regeneration Committee, added: "The impact of the proposed developments in their own right will be huge, but they will also act as a catalyst for further investment in the town."

Heads of terms for the £25 million Town Deal have now been signed and these will act as a memorandum of understanding for the future development and delivery of the regeneration proposals.



## ROLE OF TOWN DEAL BOARD HAILED

The bid for £25 million was led by the Hartlepool Town Deal Board which is chaired by local businessman Alby Pattison and made up of representatives of the local public, private and voluntary sectors.

"I'd like to go on record to thank all board members for the time and effort they put in during what was a very difficult time – the COVID pandemic meant they also had a lot of issues to deal with in their own organisations.

"This united front bodes so well for the future of the town, and I'm now looking forward to pressing ahead and bringing our exciting plans for Hartlepool to fruition," said Mr Pattison, pictured.

The board led the consultation with local residents and businesses which proved to be so important in winning Government approval.

Mr Pattison said: "Now that the Town Deal has been approved and heads of terms have been signed, work is underway to develop projects in more detail. Further input from residents and businesses will be vital."



Register on the Council's new consultation and engagement platform at [yoursay.hartlepool.gov.uk](https://yoursay.hartlepool.gov.uk) to take part in the Hartlepool Town Deal and other open consultations



# BUSINESSES FLOCK TO SHOP HARTLEPOOL

Shop Hartlepool has got off to a flying start with more than 130 local companies signing up to the new online initiative.

And now residents and visitors to the town are being urged to do their bit to help the town's economy recover from the COVID pandemic by using the [www.shophartlepool.com](http://www.shophartlepool.com) website to shop locally wherever possible.



Shop Hartlepool is a partnership between Hartlepool Borough Council and Love Hartlepool, and is being funded using money awarded to the Council from the Government's Re-opening the High Street Safely Fund, provided by the European Regional Development Fund.

Maxine Craig, Voluntary Chair of Love Hartlepool, said: "We've been so excited to see businesses we already know and love alongside so many new or hidden gems joining the Shop Hartlepool community.

"And that's our aim in a nutshell - to make Shop Hartlepool into a community for local businesses to support each other and share their love for Hartlepool, as well as being a resource for Hartlepool residents and visitors from outside of the area to discover more about the amazing local businesses we have on offer."

Councillor Shane Moore, Leader of the Council, said: "I'm delighted to see Shop Hartlepool proving so popular with local businesses. It is an excellent idea and I would encourage shoppers to use it as much as possible.

"The more money that is spent locally, the better chance there is of the local economy bouncing back quickly from the havoc wreaked by the pandemic."

The Shop Hartlepool website includes business contact information, including details of opening hours. You can search for a business by category (eg home, beauty, craft & creative etc), location and even what COVID procedures are in place.



A 360-degree video feature enables you to look around particular businesses before you even head out of your own door.

The Shop Hartlepool blog is also up and running, further promoting local businesses and giving Hartlepool residents a peek behind the scenes at local businesses as well as introducing the people behind them.

**Do you own a business in Hartlepool?**  
We want you to join Shop Hartlepool!





# JUBILATION AS POOLS RETURN TO THE FOOTBALL LEAGUE

Congratulations to Hartlepool United who have been promoted to League Two after winning 5-4 on penalties in the National League Play-off Final at Ashton Gate in Bristol.

They sealed their return to the English Football League for the first time since 2017.

Denise McGuckin, Managing Director of Hartlepool Borough Council, said: "I'd like to say a massive congratulations to everyone at Pools. They have really done the town proud and the town is rightly proud of them."



# COUNCIL AND CLUB TO WORK TOGETHER

Hartlepool Borough Council and Hartlepool United Football Club are to work together to explore ways of ensuring the club's long-term future, including reviewing opportunities to create a new multi-purpose community stadium and regenerating the town's Mill House area.

The goal is to create a club which provides not merely football but is a hub at the heart of the local community, providing a range of sport, education, health, business and event activities.

The Victoria Park stadium – which the Club leases from the Council – is approaching the end of its life, although the site itself is widely viewed as the most suitable location for a sports stadium.

At the same time, the upcoming replacement of Mill House Leisure Centre with a new multi-million pound leisure centre on The Waterfront provides the opportunity to explore collaborative options for redeveloping the Mill House site.

The Council and Club have signed a Memorandum of Understanding undertaking to work together, including:

- Identifying options and establishing initial priorities for the redevelopment of the Victoria Park stadium and training facilities.
- Contributing to the development of a shared vision and strategic masterplan for Victoria Park and the Mill House area of Hartlepool.
- Working collaboratively to bring forward strategic development proposals which ensure the sustainability of the Club.
- Jointly seeking project finance from external sources.

For more details watch our video at [www.hartlepool.gov.uk/memorandum-of-understanding](http://www.hartlepool.gov.uk/memorandum-of-understanding)



# SUMMER AT SEATON

Join us for a feast of family fun

Join us at Seaton Carew on Saturdays throughout August for a whole host of family fun.

Summer at Seaton which began last month, is being run by Hartlepool Borough Council with funding received from the Government's Welcome Back Fund, provided by the European Regional Development Fund.

Councillor Shane Moore, Leader of the Council, said: "After so many months of lockdown and restrictions, we are delighted to be able to welcome people to Seaton Carew for the ultimate fun-filled family summer. There's something for everyone, so come on down and join us!"

There will be a range of entertainment, street performance, active fun and much more.

A major attraction will be In Memoriam, a touring artwork by internationally-renowned artist Luke Jerram, which will act as a temporary memorial to all those lost during the pandemic and a tribute to NHS staff who have risked or lost their lives.

It will be located in Seaton (exact location to be announced) from August 20th-30th and feature 120 flags made from NHS bed sheets arranged in the form of a medical logo.

Full details of all Summer at Seaton activities are available at [www.explorehartlepool.com/summer-at-seaton](http://www.explorehartlepool.com/summer-at-seaton)

An event map, event list and a printable activity pack can also be downloaded.





# HARTLEPOOL WATERFRONT FESTIVAL RETURNS

The Hartlepool Waterfront Festival makes its highly-anticipated return this month with its boldest programme yet.

Organised by Hartlepool Borough Council, it will take place on Saturday/Sunday August 28th and 29th from 2-10pm at The Waterfront.

Tickets for visitors aged 16 and over are free and must be booked in advance. The festival will, however, operate on a "pay-what-you-decide" basis with people being asked to pay afterwards based on their experience. Contributions will help the Council to develop the festival in the future.

This year's theme is "REBIRTH" and there will be a wide range of arts, music and entertainment.

Visitors are encouraged to adopt safe Covid practices, including social distancing and the wearing of a face covering.

Prior to and during the festival (August 20th-30th), internationally-renowned artist Luke Jerram will bring to Seaton Carew (exact location to be confirmed) his new touring artwork In Memoriam, a memorial to those lost during the pandemic. Featuring 120 flags made from NHS bed sheets arranged in the form of a medical logo, the installation is also a tribute to NHS staff who have risked or lost their lives.

On Saturday August 28th, Fleetwood Mac's 'Rumours' album will be performed live by top session musicians Transatlantic Ensemble on the Moon Stage at The Waterfront. The following day, the Moon Stage will host The Futureheads, a post-punk band with a national following.

The festival is being supported by the Tees Valley Mayor and Combined Authority with £30,000 as part of the Tees Valley Festivals 2021 Recovery Fund. Funding is also being provided by the Arts Council.

Book your tickets at [hartlepoolwaterfrontfestival.com](http://hartlepoolwaterfrontfestival.com)



HartlepoolWaterfrontFestival



hpoolwaterfront



TEES VALLEY MAYOR



Supported through public funding by  
ARTS COUNCIL  
ENGLAND

ENJOY  
TEES VALLEY



# NEW EVENTS SPACE TAKES SHAPE

Work is forging ahead on the new outdoor events space on the Headland.

Major piling works on the site are now complete and the former terracing has been demolished. Installation of new terracing is underway and a new rear retaining wall is currently being built. Forthcoming works will include the creation of a feature paved area and landscaping of parts of the site.

Located on the promenade next to the Heugh Battery Museum, the new events space will host open air performances in the spring and summer seasons and also be available for commercial hire and use by community groups for events and activities.

Old photographs dating back to the early 1900s show that the site which included a

bandstand, was a popular location for a range of public events, community celebrations and entertainment.

The restoration scheme has been designed in-house by the Council and the main contractor is town-based Seymour Civil Engineering. It is scheduled for completion by the autumn.



[www.hartlepool.gov.uk/headland-event-space](http://www.hartlepool.gov.uk/headland-event-space)

# DON'T MISS THE FANTASTIC SUMMER PANTOS

Have you got your tickets yet for the fabulous summer pantomimes at the Borough Hall?

There's fun for all the family with Snow White and the Seven Dwarfs from Friday 20th to Monday 30th August. Tickets cost £18 for adults, £15 for children or £59 for a family ticket (2 adults and 2 children).

As well as family fun with Snow White, there's also adult panto fun with Dick Whittington – Adults Only! from Thursday 26th to Sunday 29th August. This side-splitting show is strictly for the over-18s and definitely not for those who are easily offended! Tickets cost £18 per person.

For timings of the pantos and to book visit [www.hartlepoolboroughhall.com](http://www.hartlepoolboroughhall.com) or call **01429 890000**.

We welcome people wearing face masks until seated for the performances.

As a special 'thank you' to the NHS and all those other groups of people and individuals for their outstanding work during the COVID pandemic, the Ceremonial Mayor of Hartlepool Councillor

Brenda Loynes has organised complimentary tickets to the performance of Snow White on Sunday 22nd August at 2pm.

They are available to anyone who has made a significant contribution to fighting COVID or helping keep daily life functioning during the pandemic.

Those who receive the complimentary tickets will also have their names entered into a draw for two Hartlepool United season tickets, kindly donated by the Club to the Council.

Councillor Loynes said: "Our heartfelt thanks to everyone who has been at the front line of fighting COVID or keeping daily life moving – I very much hope they will appreciate this special 'thank you'."

People should submit requests for the complimentary panto tickets by email to [borough.hall@hartlepool.gov.uk](mailto:borough.hall@hartlepool.gov.uk), stating their name, occupation or contribution to the pandemic fight and the number of tickets required. We expect a high response and sadly cannot guarantee that all requests will be able to be fulfilled.



# LOVE, RESPECT AND PROTECT YOUR PARKS

Residents in Hartlepool are being urged to get behind their local parks by playing a part in keeping them tidy and reporting any problems.

Hartlepool's local parks and green spaces have been a lifeline to many people throughout the COVID-19 pandemic which highlights the importance of how much people value parks and how vital they are for our physical and mental health.

Hartlepool Borough Council has a dedicated team of park staff who work hard to make our local parks look great, but we also need help from residents. All park users have a responsibility, from putting litter in the bin to cleaning up after their dogs, there are lots of little things people can do to keep our parks enjoyable for all.

Anyone can provide feedback, make suggestions or report any problems in any parks via [www.hartlepool.gov.uk/parksreport](http://www.hartlepool.gov.uk/parksreport) or by calling **01429 266522**

Councillor Tim Fleming, Chair of Hartlepool Borough Council's Adult and Community Based Services Committee, said: "Parks are incredibly important places that give us space to play, relax and enjoy nature and the pandemic has highlighted how essential they are to a sense of wellbeing.

"We've welcomed more people than ever to our parks and open spaces and it's fantastic that we have nature on our doorstep in Hartlepool. We pay a lot of care and attention to maintaining our parks and making sure they're a safe and welcoming environment for everyone to enjoy.

"But it is also saddening that a significant minority are abusing these spaces by littering and spoiling our parks for others. There is no excuse for littering, if the bins are full, take your rubbish home. We all need to take responsibility for our own actions when we visit our parks."

## #RESPECTPARKS



**BE FRIENDLY AND SHARE THE SPACE**



**RESPECT THOSE WORKING IN THE PARK**



**KEEP YOUR DOG UNDER CONTROL, AND BAG AND BIN DOG POO**



**IF THE BINS ARE FULL, TAKE YOUR LITTER HOME**



**CARE FOR NATURE - DO NOT CAUSE DAMAGE OR DISTURB WILDLIFE**



To find out more about Hartlepool's parks and open spaces, visit:  
[www.hartlepool.gov.uk/parks](http://www.hartlepool.gov.uk/parks)

# NEW YOUTH HUB LAUNCHED

---

A powerful new collaboration has been formed to help young people in Hartlepool to overcome the barriers and gain the skills, experience and confidence they need to get into employment.

Called the Hartlepool Youth Hub, it has been created through a partnership between Hartlepool Borough Council, Jobcentre Plus, National Careers Service and other partners.

Based at Hartlepool Enterprise Centre, the Hub provides comprehensive support for young people aged 16-29 who are not in work, education or training including:

- Careers education, information and advice with a named careers adviser, providing both one-to-one and group support.
- Specialist workshops, including a two-week intensive support programme so that individuals are ready to enter the jobs market.
- Programmes to help young people develop skills and gain work experience linked to

employers within growth employment sectors who will offer guaranteed interviews.

- Training programmes, including online learning, linked to employment opportunities.
- Access to alternative provision to help young people prepare for the world of work, including voluntary work placements via Volunteer Hartlepool and traineeships.
- Support to help young people improve their health and wellbeing.

The Hub - which was launched at an event in the Borough Hall - has already received more than 500 referrals. Over 200 young people have so far been signed up to a programme of specialist support and more than 70 have already progressed into work.

For more information, download the Hartlepool Youth Hub Handbook at [www.hartlepoollearningandskills.com/youth-hub](http://www.hartlepoollearningandskills.com/youth-hub) or call **01429 401831**.

## JOIN US ON A REMARKABLE JOURNEY

Could you give an older child a caring, loving home, supporting them and sharing their journey of discovery as they grow into a confident young adult?

Caring foster homes are urgently needed for children and young people in Hartlepool Borough Council's care - especially those aged 12 and over.

"We're particularly keen to find foster carers who can give loving, long-term homes to older children, on through higher education and into their first working years," says Jane Wilson, the Council's Fostering Team Manager.

"Fostering an older child can be a tremendously rewarding experience. You are with them as they

learn and as they explore the world around them, finding their own identity in everything from clothes to music.

"You can take great pride in helping steer them safely through the journey to becoming a confident young adult, encouraging them, supporting them through the challenges and low points and sharing the laughter and excitement of their successes.

"We'll give you all the training, financial and emotional support you'll need to do that.

"There's no 'typical' foster carer, so please don't rule yourself out, whatever your age, background or circumstances."

To find out more, visit [www.hartlepool.gov.uk/fostering](http://www.hartlepool.gov.uk/fostering), call **01429 405588** or email [fosterandadopt@hartlepool.gov.uk](mailto:fosterandadopt@hartlepool.gov.uk)



# TACKLING ANTI-SOCIAL BEHAVIOUR

The Hartlepool Community Safety Team (a partnership of Hartlepool Borough Council, Cleveland Police and Cleveland Fire Brigade) has been working to tackle anti-social behaviour centring on the former Admiral Court care home.

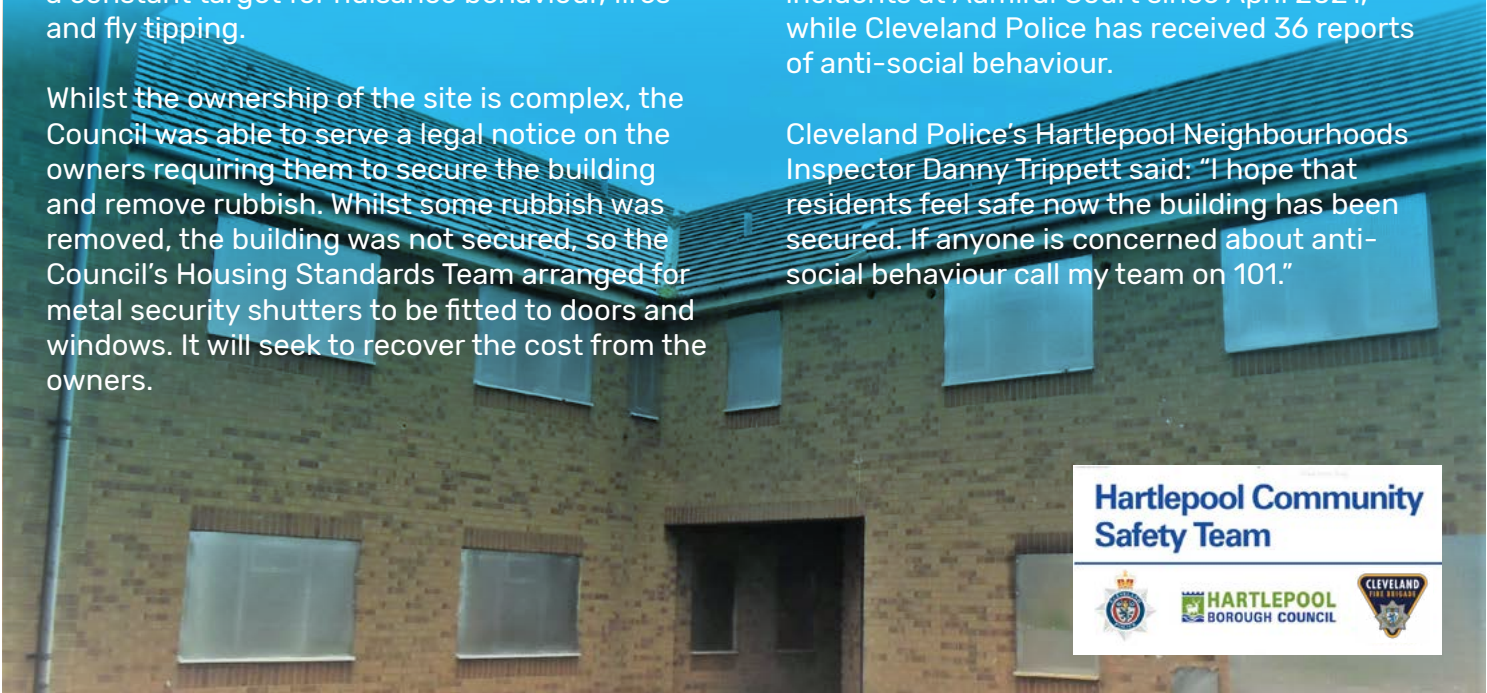
The derelict building on Cleveland Road has been a constant target for nuisance behaviour, fires and fly tipping.

Whilst the ownership of the site is complex, the Council was able to serve a legal notice on the owners requiring them to secure the building and remove rubbish. Whilst some rubbish was removed, the building was not secured, so the Council's Housing Standards Team arranged for metal security shutters to be fitted to doors and windows. It will seek to recover the cost from the owners.

Councillor Shane Moore, Leader of the Council and Chair of the Safer Hartlepool Partnership, said: "We want to send out a clear message that owners of empty buildings have a responsibility to ensure they are safe and secure."

Cleveland Fire Brigade has attended over 20 incidents at Admiral Court since April 2021, while Cleveland Police has received 36 reports of anti-social behaviour.

Cleveland Police's Hartlepool Neighbourhoods Inspector Danny Trippett said: "I hope that residents feel safe now the building has been secured. If anyone is concerned about anti-social behaviour call my team on 101."



## HELP US REDUCE FLY-TIPPING

As part of its campaign to tackle fly-tipping, the Council is calling on residents to dispose of their waste responsibly.

One way they can do this is by using the authority's Waste Removal Service to get rid of unwanted bulky items, safe in the knowledge that their waste will not be illegally dumped.

The Council introduced a second Waste Removal Team in May and as a result collection slots have increased from 60 to 120 per week. The aim is for residents to wait no longer than five working days for a collection.

Crews use the latest digital technology to receive collection information, ensuring the service operates as efficiently as possible.



Collections cost £20 for up to three items and £40 for up to six items. The service now collects carpet although they must be cut into pieces no more than 3x3 metres and kept dry. One piece is one item. There is a 50% reduction for residents in receipt of certain benefits, including Council Tax Support, Income Support, Job Seeker's Allowance (income based), Employment Support Allowance (income based), Pension Credit (guaranteed credit) and Housing Benefit.

Half of all bookings are made online and 411 residents have provided feedback, giving the service an average rating of 4.6 out of 5 stars.

Book a collection at [online.hartlepool.gov.uk](https://online.hartlepool.gov.uk) or call (01429) 523333



# TALL SHIPS 2023 UPDATE

As Hartbeat went to print, Hartlepool Borough Council was in the process of recruiting an Event Director for Tall Ships 2023.

It comes after Hartlepool has been selected to host the world-famous Tall Ships again in the summer of 2023.

Hundreds of thousands of visitors from far and wide flocked to the town when the vessels last visited in 2010.

The Event Director will be responsible for ensuring that the aspirations for the 2023 event are realised, including a comprehensive legacy programme.

[www.hartlepool.gov.uk/tall-ships](http://www.hartlepool.gov.uk/tall-ships)



## GET FIT FOR GET FREE



With 6 free  
fitness classes  
per week



Gym inductions  
Brierton Sports  
Centre Wednesday  
10am | 12pm

	MILL HOUSE LEISURE CENTRE	BRIERTON SPORTS CENTRE	HEADLAND SPORTS CENTRE
FITNESS CLASSES	Spinning Thursday 12.15pm-1.00pm	Body Conditioning Monday 8:30am-9:15am	Body Conditioning Wednesday 5:00pm-5:45pm
Low Level Circuits Friday 10:15am-11:00am	Spinning Tuesday 7:00am-8:00am	Strong Nation Thursday 5:00pm-5:45pm	
GYM SESSIONS	Monday - Friday 6:50am-7:40am 8:50am-9:40am 11:50am-12:40pm	Saturday & Sunday 11:00am-11:50am	Monday - Friday 7:00am-7:50am 5:00pm-5:50pm

Mill House Leisure Centre Tel: 01429 523338 Raby Road, Hartlepool, TS24 8AR

Brierton Sports Centre Tel: 01429 523338 Brierton Lane, Hartlepool, TS25 4AF

Headland Sports Centre Tel: 01429 523338 Union Street, Headland, Hartlepool, TS24 ONZ

Booking is essential, this can be done by phoning on 01429 523338 or booking online - [www.gethartlepoolactive.co.uk](http://www.gethartlepoolactive.co.uk)



# GALLERY UNVEILS A REAL TREAT FOR THE EYE

There's a visual feast in store in a new exhibition opening soon at Hartlepool Art Gallery.

Called 'Unlocked', it celebrates the reopening of the popular tourist attraction and the opportunity to once again show items from the town's collection of art, following the restrictions of the COVID pandemic.

On display will be famous pieces by LS Lowry, Margaret Green and John Bratby, works by 19th century British artists, pieces by local artists celebrating industrial Hartlepool and modernist and abstract works by women artists.

The exhibition runs from Saturday 28th August to Saturday 30th October.

As well as enjoying the display, visitors can also tuck into tasty treats in the gallery's Vestry café

and browse the gift shop's range of unusual, quality items.

The gallery is open 10am – 5pm Tuesdays to Saturdays and entry is free.



Seaton Carew Beach by Margaret Green will be among the art works on show

## WHAT'S ON AT THE BOROUGH HALL

 **HARTLEPOOL  
BOROUGH COUNCIL  
BOROUGH HALL**

The new online What's On Guide for Hartlepool Borough Hall is now available.

It is packed full of useful information and covers a whole range of forthcoming events, including pantomime, music, dance and comedy.

The guide can be viewed at [www.hartlepoolboroughhall.com](http://www.hartlepoolboroughhall.com)





# Open your heart and your home. Become a Shared Lives Provider

.....

Do you have a spare room and the commitment to share your life with an adult who needs extra support?

If you can support someone to make choices, lead a meaningful life and develop their independence skills then you could become a Shared Lives Provider.

Hartlepool Shared Lives is a service which provides adults who are not able to live on their own a safe, secure home with the love and stability that family life can offer, through living with a Shared Lives Provider.

Usually the adult finds it difficult or impossible to live independently, because they have:

- A learning disability
- Mental health needs
- Physical disability or sensory impairment

As a Shared Lives Provider you'll receive training, 24/7 support and an allowance on a 4 weekly payment schedule.

We invite and encourage people of all ages and backgrounds to become Shared Lives Providers. The only essential criteria is that you have a spare room in a safe, clean and comfortable home.

If you are looking for a rewarding career and could offer your home to someone visit:  
[www.hartlepool.gov.uk/hartlepool-shared-lives](http://www.hartlepool.gov.uk/hartlepool-shared-lives)



## MAYOR ANNOUNCES CHARITIES

Councillor Brenda Loynes – the Ceremonial Mayor of Hartlepool – has announced Alice House Hospice and Miles for Men & Walk For Women as her two chosen charities for the year ahead.

Alice House Hospice exists to ensure people affected by a life limiting illness or the death of a loved one have the care, comfort and support they need.

Miles for Men & Walk For Women is dedicated to raising funds for those affected by cancer both within the local community and nationally.

Councillor Loynes said: "During my first term as Ceremonial Mayor, I raised money for Pansies Breast Cancer Support Group, the Great North Air Ambulance Service and anti-domestic abuse service Harbour.

"I'm delighted to have been elected Mayor again and I am now looking forward to being able to raise money for some more great charities."







SUPPORT  
@THE HUB



## Hartlepool Support Hub


If you or someone you know needs advice or support, Hartlepool Support Hub is still here to help you stay safe, stay well and stay connected.


### The Support Hub offers:

- lots of information to help you stay safe and well
- support to help you meet new people, learn digital skills and get online, and discover activities across the town
- advice to help you enjoy a healthier lifestyle and get out and explore Hartlepool's open spaces and facilities

The Support Hub is still on hand to support those people self-isolating and identified through Track and Trace.

You can contact the Support Hub by:

 **01429 272905** (10am - 4pm Mondays to Fridays)

 **helping@hartlepool.gov.uk** (please provide your contact details and we will get back to you)

If someone you know is vulnerable or at risk, you can contact the Integrated Single Point Access (iSPA) for help and support on **01429 523390** or email **ispa@hartlepool.gov.uk**

The Children's Hub can provide information, advice and guidance on services and support for children, young people and families - call **01429 284284** or email **childrenshub@hartlepool.gov.uk**

## LET'S KEEP LIFE MOVING



FRESH AIR



TESTING



FACE COVERINGS



APP



HANDWASHING

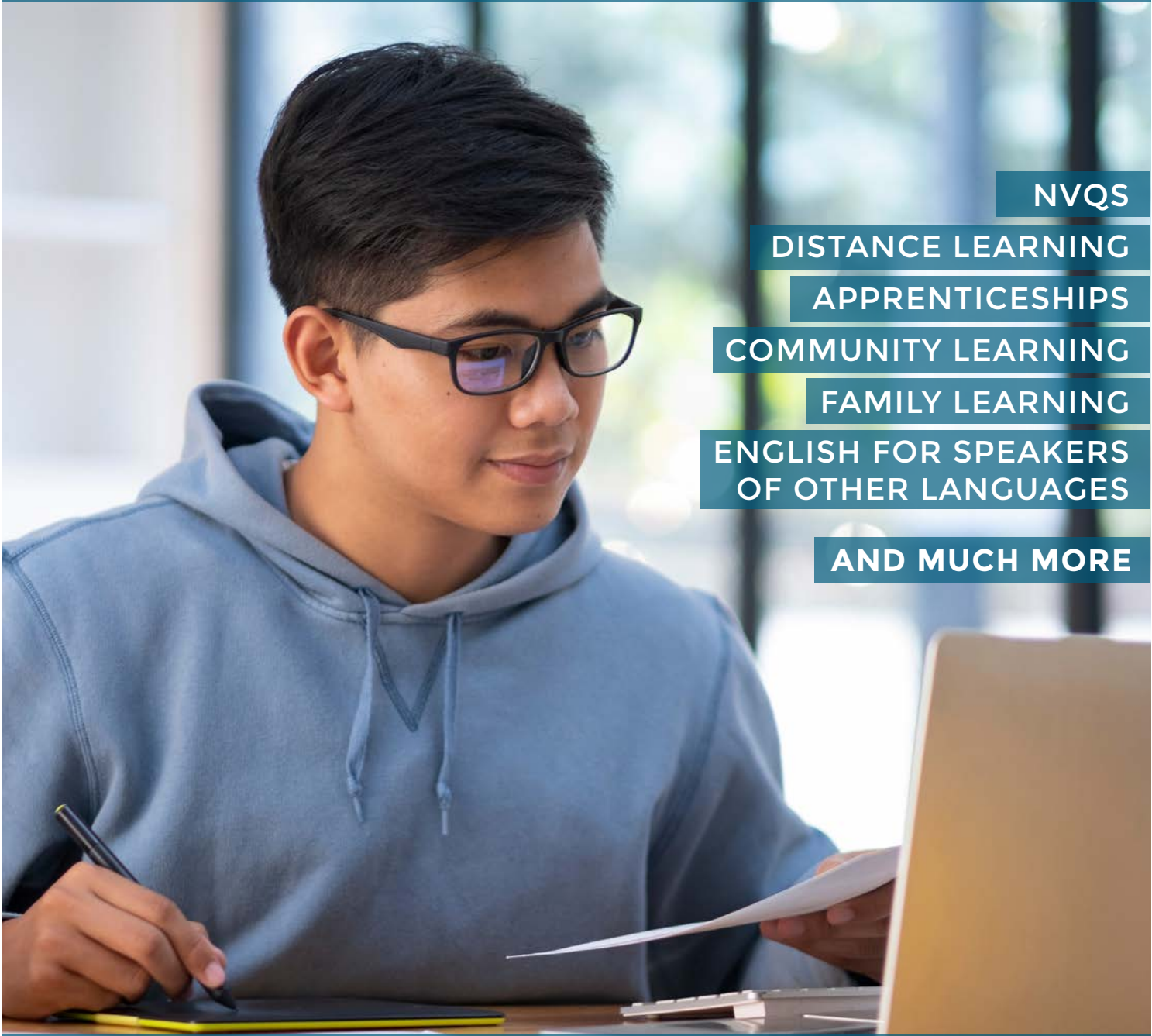




# DEVELOP NEW SKILLS AND BOOST YOUR CAREER WITH



## TRANSFORMING LIVES, TRANSFORMING LEARNING



NVQS

DISTANCE LEARNING

APPRENTICESHIPS

COMMUNITY LEARNING

FAMILY LEARNING

ENGLISH FOR SPEAKERS  
OF OTHER LANGUAGES

AND MUCH MORE

Explore our new curriculum and apply online today at  
[www.hartlepoollearningandskills.com](http://www.hartlepoollearningandskills.com) or call 01429 868616



TEES VALLEY MAYOR

