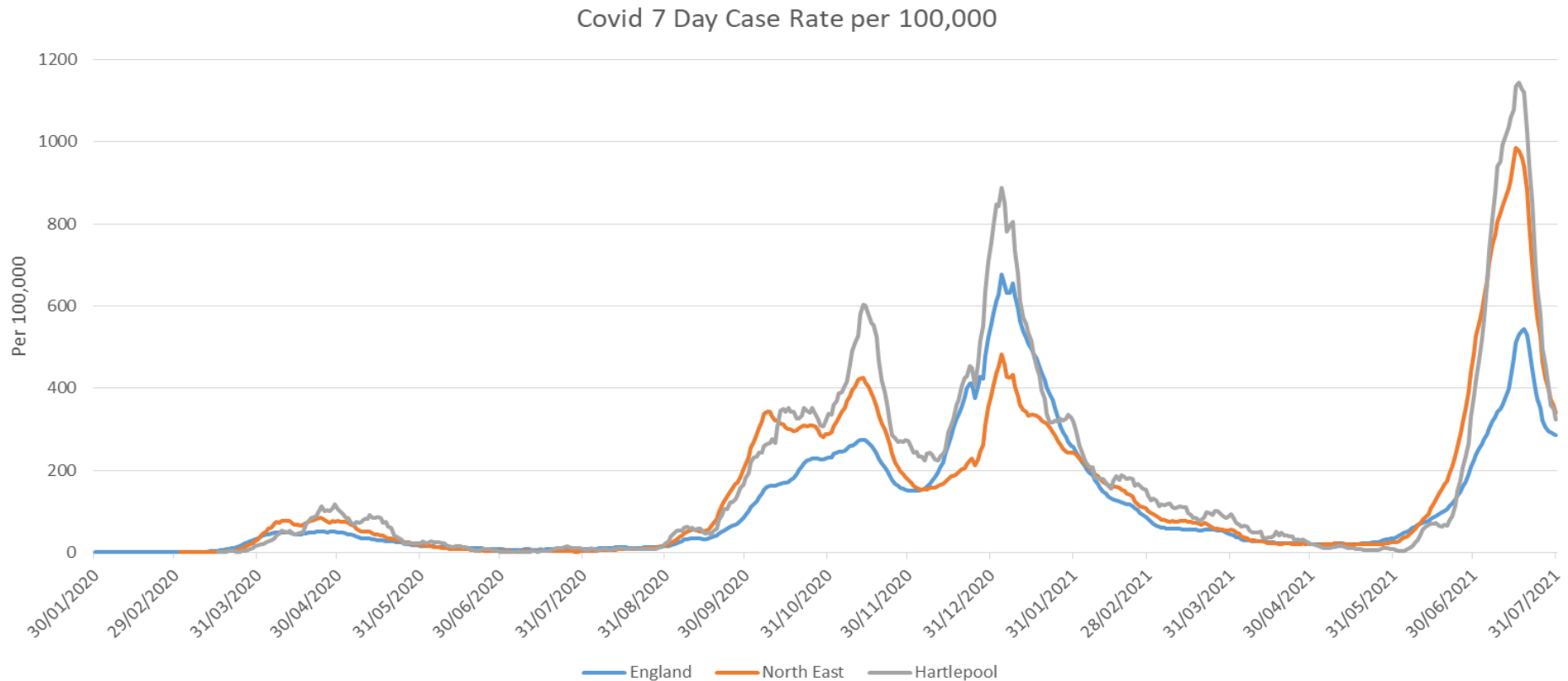




Director of Public Health Report 2021 – Covid Data

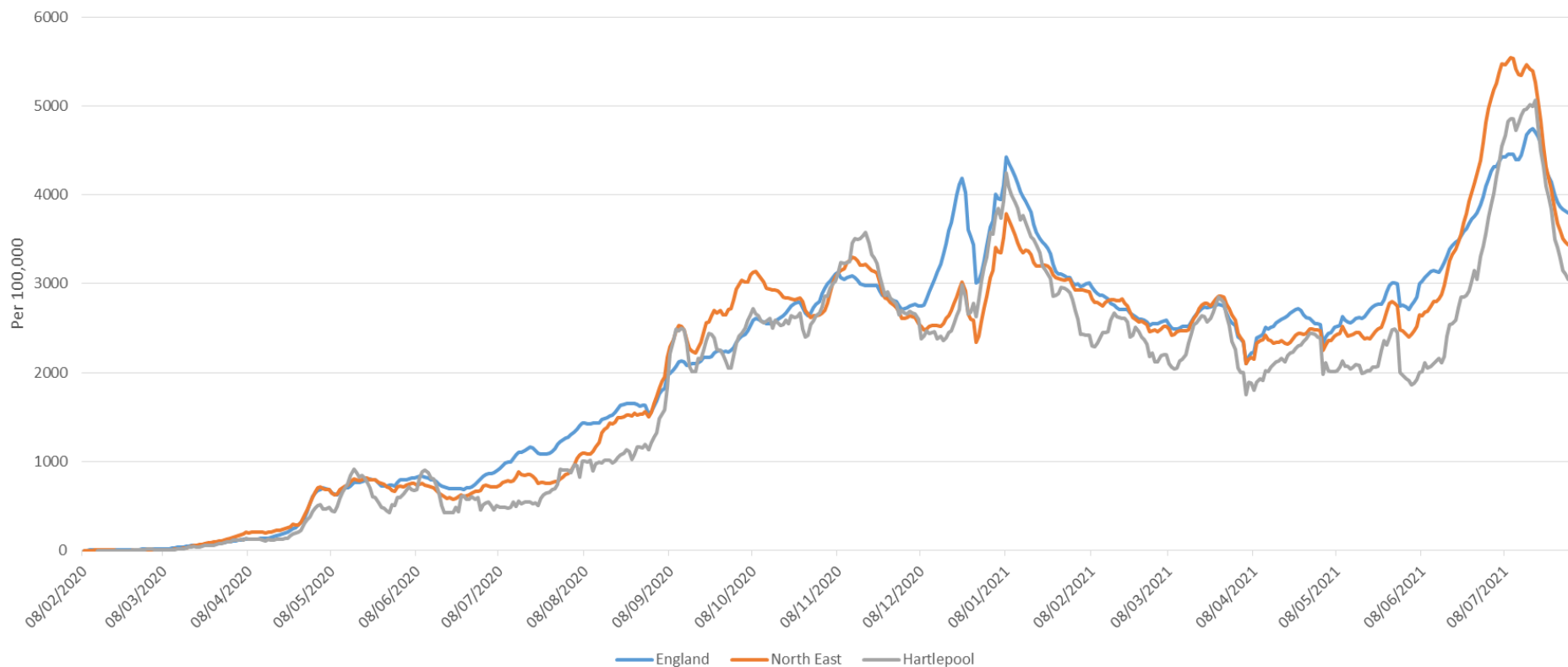
Covid Case Rate per 100,00 Population



Hartlepool's peaks in Covid 19 case rate, follow a similar pattern to both the North East as a region and England as whole, but each time the peak for Hartlepool has reached a higher level than both England and the North East.

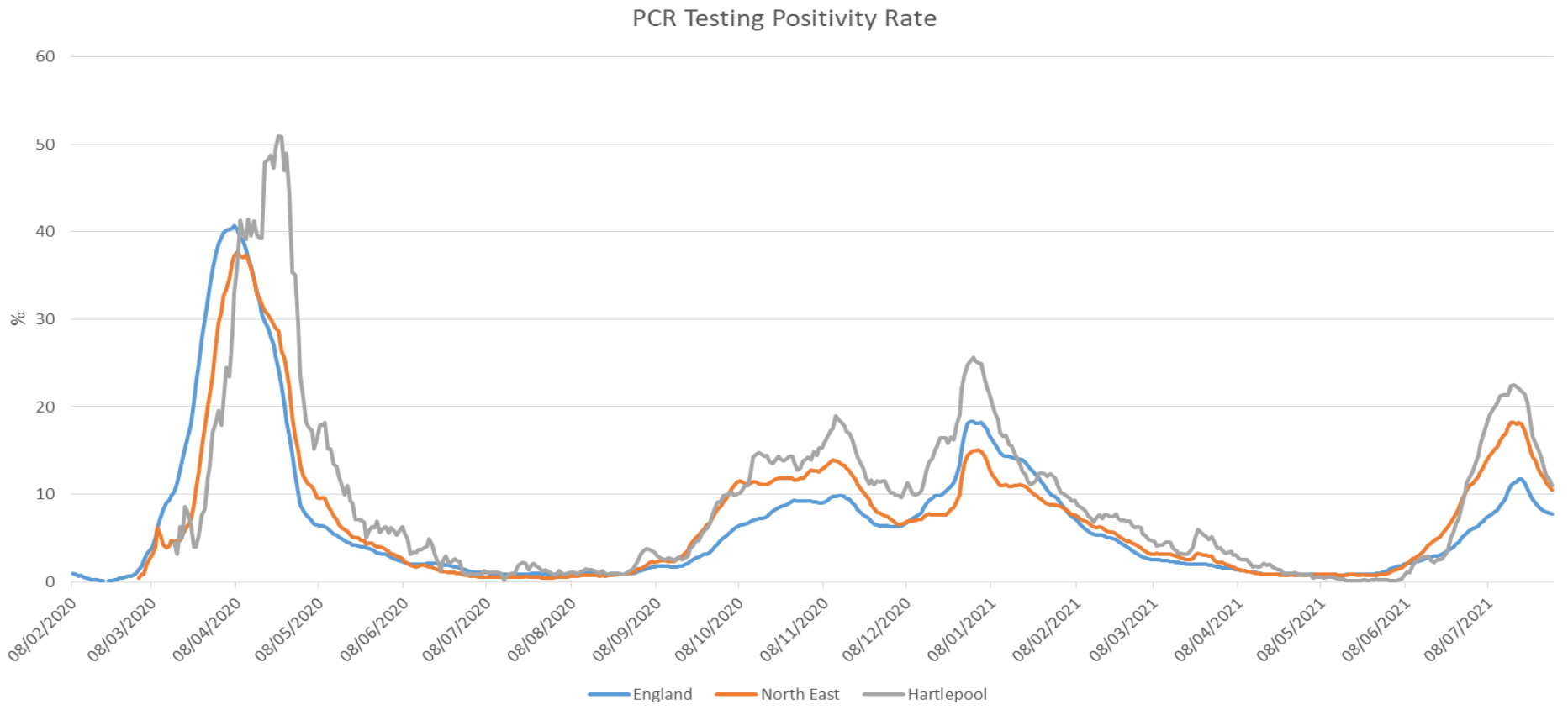
Covid PCR Test Rate per 100,00 Population

Rate per 100,000 of People PCR Tested on a Rolling 7 Day Basis



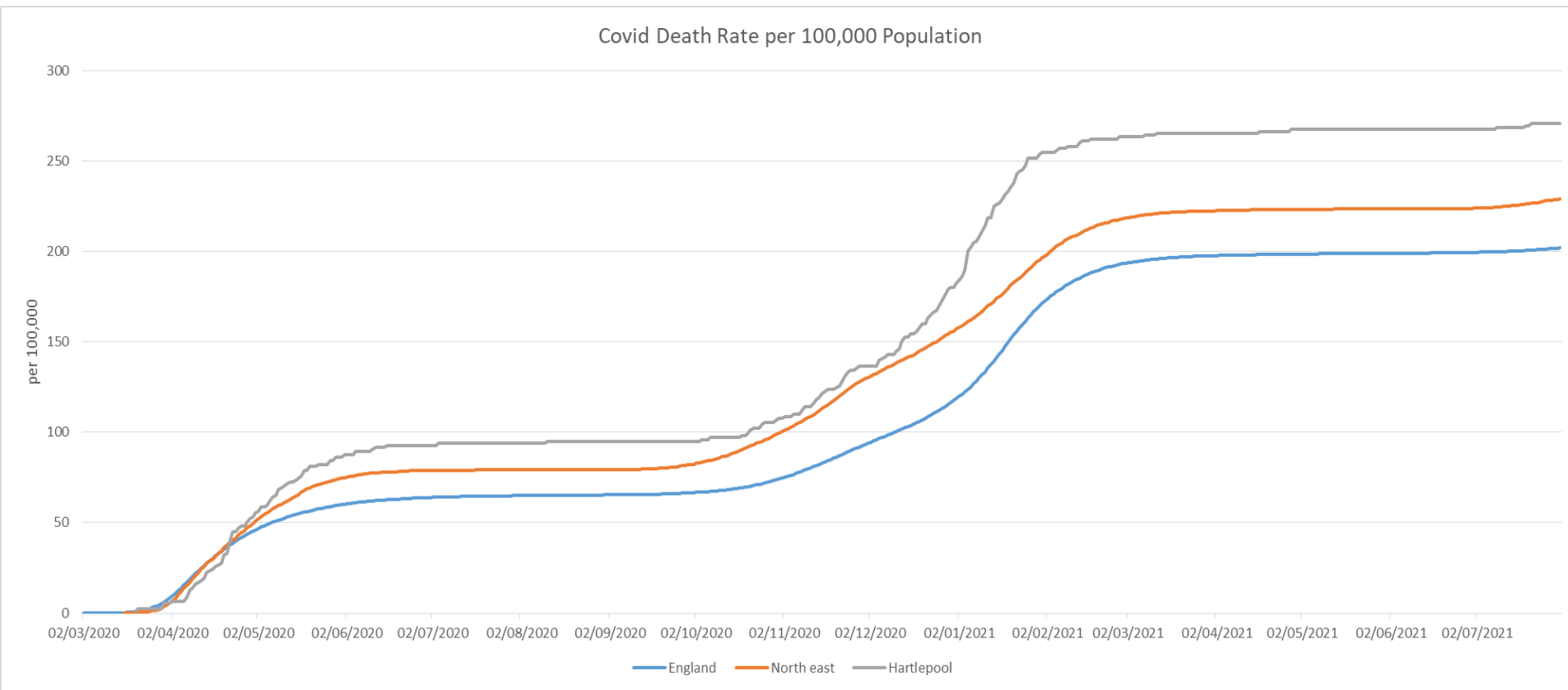
Hartlepool's PCR testing rate has often been below the North East and England rates, the occasions where the Hartlepool rate has exceeded that of the North East and England have usually been driven by a peak in Covid case numbers.

Positivity Rate of Covid 19 PCR Tests



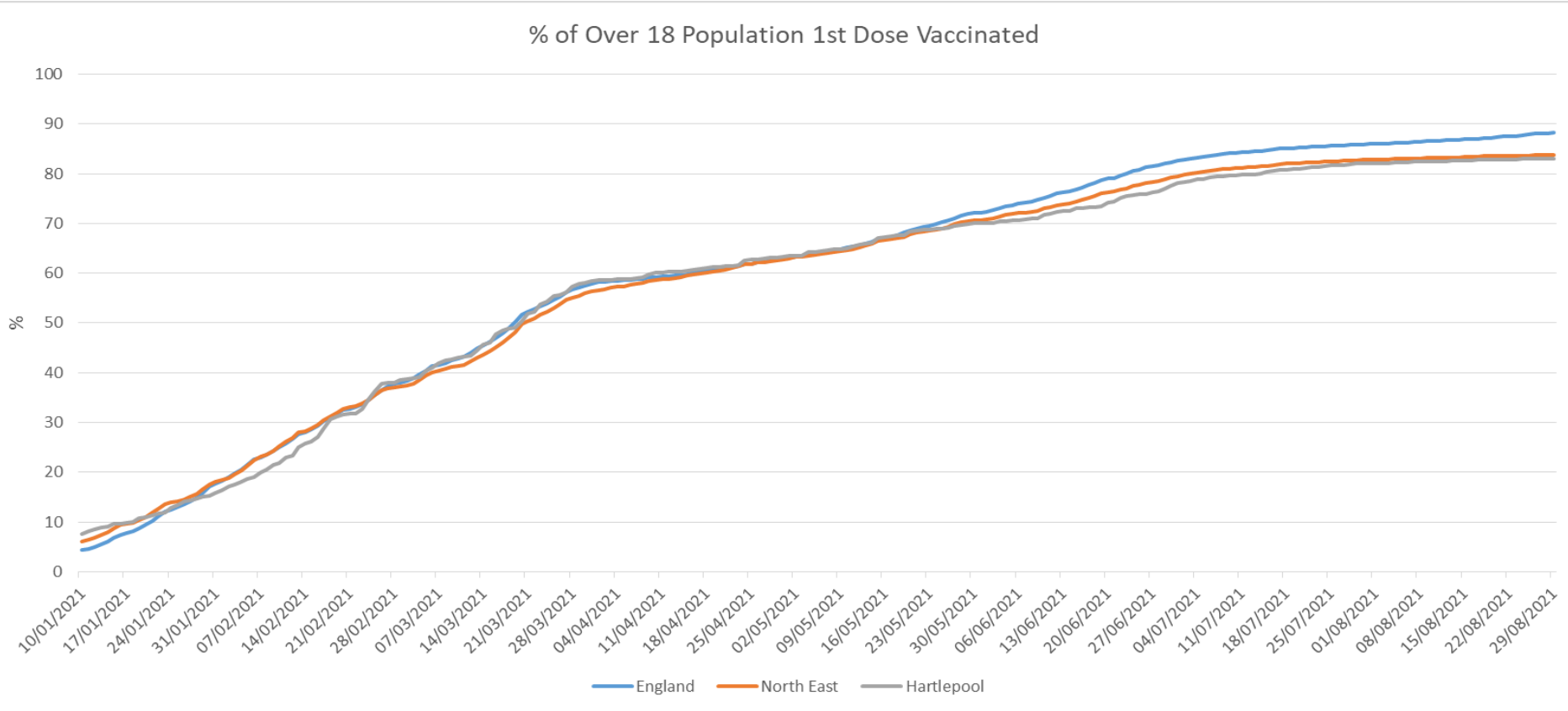
The positivity rate (the percentage of tests that come back as positive) for Hartlepool has been higher than both the North East and England average for the majority of the pandemic. The gap has increased whenever there is a sustained increase in the number of cases.

Covid Death Rate per 100,000 Population



Hartlepool's death rate from Covid 19 exceeded both the North East and England rates in late April 2020, and has remained higher ever since. The gap between the rates began to accelerate in December 2020, but has largely remained stable since February 2021.

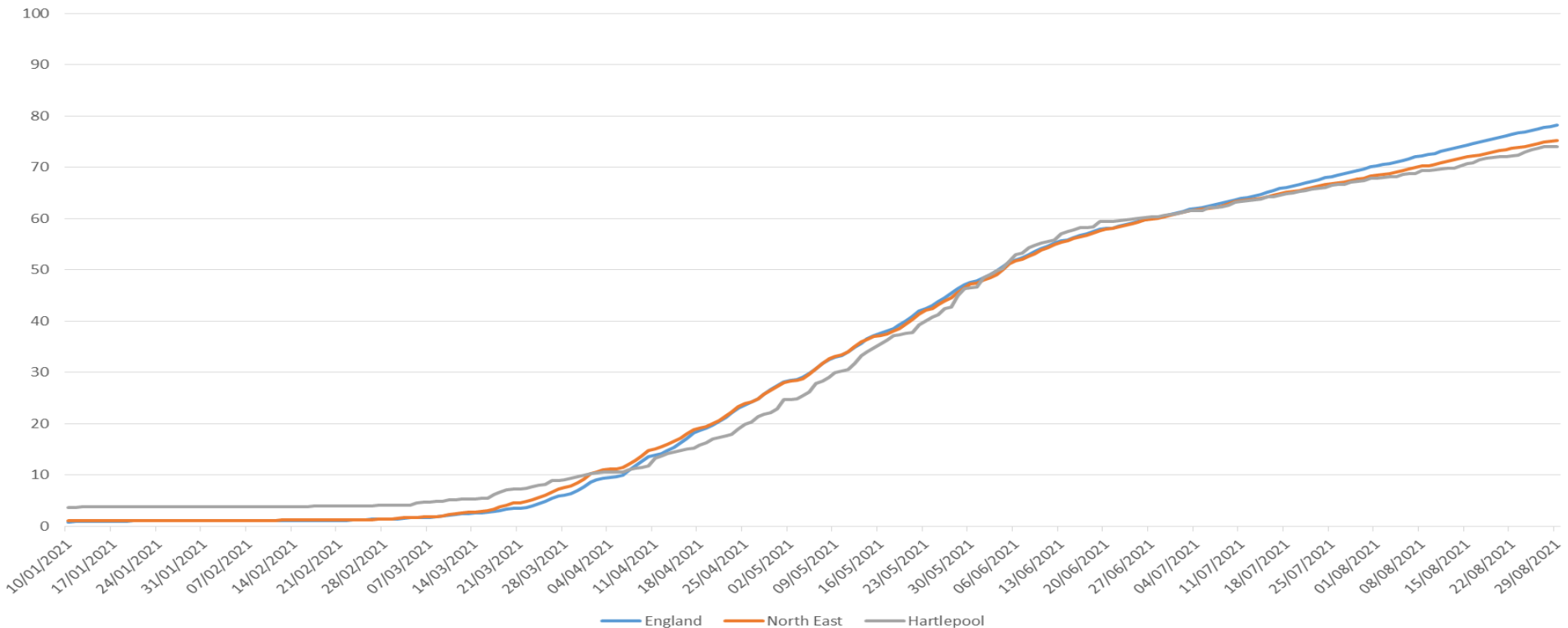
Percentage of Over 18 Population Covid 19 Vaccinated – 1st Dose



Hartlepool's Covid 19 1st dose vaccinations are at a similar level to the North East average, though both Hartlepool and the North East are slightly below the England average.

Percentage of Over 18 Population Covid 19 Vaccinated – 2nd Dose

% of Over 18 Population 2nd Dose Vaccinated



Similar to the picture for the 1st dose population coverage, for 2nd dose Hartlepool is at a similar level to the North East average, but both Hartlepool and the North East are below the England average.