

Hartbeat

March 2022



www.hartlepool.gov.uk



@hpoolcouncil



HARTLEPOOL
BOROUGH COUNCIL

Discover your career through us

Our Careers Service offers one-to-one dedicated and impartial careers education, information, advice and guidance to all learners, to help them understand the many exciting and varied career pathways available.

If you're looking for work or want to upskill to further your career, you can speak to an adviser from our Careers Team at one of our weekly drop-in sessions:

Monday	Community Hub South, Wynyard Road	10am - 3pm
Tuesday	Community Hub Central, York Road	10am - 3pm
Wednesday	Community Hub Central, York Road	10am - 3pm
Thursday	Community Hub South, Wynyard Road	10am - 3pm

 www.hartlepoollearningandskills.com/careers-service

 01429 401831



Reach your goals with us

Our team of passionate and dedicated staff and volunteers is here to assist you to achieve your learning and career goals with a range of training courses, career guidance and employment support.

Popular courses right now include:

- Positive Steps into Volunteering
- First Steps to Understanding Local Career Opportunities
- Minute Taking Skills
- Explore Self-Employment
- Essential Digital Skills
- Level 2 Award in Food Safety
- Level 1 & 2 English and Maths Bootcamps
- Level 1 & 2 Functional Skills in Maths

Coming soon:

- AAT Awareness Workshop
- Asbestos Awareness
- Manual Handling at Work
- Level 1 Health & Safety in the Workplace
- LGBTQ+ Inclusion in the Workplace

To find out more call **01429 868616**, come along to Victoria Buildings, Tower Street, Hartlepool, or visit www.hartlepoollearningandskills.com



Now is the time...

Spring – the season of rebirth and hope – is just around the corner and everywhere you look in Hartlepool there are certainly signs of the change that is about to come.

We've just released exciting images of Highlight, the new place for sport and leisure you've been waiting for and you can find out more about the progress of this exciting development on page seven.

We've got an accessible cycle track opening at Summerhill Country Park this summer which will be safe for riders of all ages and abilities and includes the provision of adapted bikes to enable disabled people to enjoy the benefits of cycling. Turn to page six to read the full story.

We're so passionate about bringing affordable housing to Hartlepool and you can find out more about a new 234-home development – 84 of which will be offered as affordable housing – on page 22.

It's wonderful to be able to say the world-famous Tall Ships are heading back to Hartlepool in 2023. Work is underway to make sure this is an unforgettable event

and – as the countdown begins – you can find out more about the progress we're making on the centre pages.

We recently marked the Queen's Platinum Jubilee by illuminating two Hartlepool landmarks, something which received national attention and we have lots more planned to celebrate this momentous occasion. In particular, June's four day bank holiday weekend will provide us with a unique opportunity to celebrate our wonderful Queen and we'll be holding a number of events at Elephant Rock, our brand new outdoor community events space on the Headland. Find out more on pages four and five.

We're also breathing new life into Church Street after transforming a former takeaway into a commercial unit, with two high-quality flats above. Part of our exciting Capital Investment Programme, the scheme has been carried out by our in-house Construction Section. Turn to page 13 to learn more.

The season of rebirth is upon us – change is coming to Hartlepool.



Jubilee | 4



Summerhill | 6



Highlight | 7

Hartbeat is available in Braille and articles can be translated into other languages. For information please call (01429) 523578 or email communications@hartlepool.gov.uk

To advertise in Hartbeat please call (01429) 523578 or email communications@hartlepool.gov.uk



Councillor Shane Moore
Leader of the Council



Denise McGuckin
Managing Director

Councillor Brenda Loynes

It was with deep sorrow that Hartlepool Borough Council recently announced the death of Councillor Brenda Loynes, the Ceremonial Mayor of Hartlepool, following a long and brave battle with cancer.

Councillor Loynes had been a Conservative Councillor since 2011 and had served as the Ceremonial Mayor since 2019, raising thousands of pounds for local charities.

Councillor Shane Moore, the Leader of Hartlepool Borough Council, said: "Brenda has been the most amazing public servant, Mayor and friend who was totally committed to residents and the Council she served with pride."

Denise McGuckin, Hartlepool Borough Council's Managing Director, said: "Brenda was loved and admired by so many people across Hartlepool. I've known Brenda for many years, since before she was a Councillor. She was a good friend and I will miss her."



We've set up an online book of remembrance which can be found at www.hartlepool.gov.uk/condolence

Long To Reign Over Us

Two Hartlepool landmarks were illuminated recently as Her Majesty The Queen became the first British Monarch to celebrate a Platinum Jubilee.

Union Jack effect lighting and the number 70 were projected onto Hartlepool Art Gallery and St Hilda's Church to help celebrate this unprecedented anniversary.

A Civic drinks reception was held at Hartlepool Art Gallery attended by Mrs Sue Snowdon, H.M. Lord-Lieutenant of County Durham. At this event, Mrs Snowdon saw jubilee inspired artwork created by Hartlepool schoolchildren which will be shown in venues around the town throughout the course of the year.

Further events and initiatives will take place throughout the year, culminating in a four day UK bank holiday weekend from Thursday 2nd to Sunday 5th June.

The bank holiday will provide an opportunity for people across Hartlepool to come together to celebrate the historic milestone and we'll be announcing further details in due course.

We'll be lighting our beacons and holding a number of events at Elephant Rock, our brand new outdoor community events space on the Headland.

It comes after Elephant Rock has been shortlisted in the Small Category of the ICE (Institution of Civil Engineers) North East awards which aim to promote and celebrate civil engineering across the region.

Councillor Shane Moore, the Leader of Hartlepool Borough Council, added: "The Queen has been a wonderful servant of the United Kingdom, the Realms and the Commonwealth and it was great that we were able to start our own celebrations of her reign in this way.

"There's lots more to come later on in the year and I really hope residents and business across the Borough will join us as we celebrate our truly remarkable Queen."





James Hind/Teesside Snapper

Cycle track works commence

Construction is underway of an accessible cycle track at a Hartlepool country park.

The new 750-metre track at Summerhill Country Park will be safe for riders of all ages and abilities.

Thanks to funding from British Cycling, Hartlepool Borough Council is developing a cycling hub which will provide accessible, traffic-free community cycling facilities and opportunities.

The fenced and floodlit track is aimed at encouraging everyone – whatever their ability – to cycle more safely and more often.

Once construction is complete, the project will also support people to further develop their cycling skills in track and BMX, in partnership with several local clubs.

The works – which will conclude in May 2022 – are being carried out by Rainton Construction Ltd who were awarded the contract following a successful tender submission.



(left-right): Gemma Ptak, Hartlepool Borough Council Assistant Director (Preventative and Community Based Services), Councillor Shane Moore, Leader of Hartlepool Borough Council, and Keith Carter, a member of staff at Summerhill.

Excitingly, the project also includes the provision of adapted bikes to enable disabled people to become more active and enjoy the benefits of cycling.

Councillor Shane Moore, the Leader of Hartlepool Borough Council, said: "We're really excited to see this development get underway.

"It's so important that we extend our inclusive offer at Summerhill so that everyone can get involved and this is a big contribution to that."

Are you up for a challenge?

Online entries are now being taken for Hartlepool's Big Lime Weekend 2022.

The weekend, organised by Hartlepool Borough Council, will take place from Friday 12th August-Sunday 14th August and comprises a predictor swim, an aquathlon and a triathlon.

The events are open to competitors of all abilities, and people are being urged to book early to secure their places.

Each month, the names of people who have entered during that period will be put into a draw for a sports equipment gift voucher.

Everyone taking part in the triathlon will receive a free t-shirt. If they choose to accept the Triple Lime Challenge by entering all three races they will be receiving the Friday predictor swim for free.



The full details of the weekend's events are as follows:

Friday 12th August, 7pm, Predictor Swim - A 750m open water swim within the enclosed Hartlepool Marina. Submit your predicted swim time when entering and try and match it on the evening. The closest competitor to their predicted swim time will win a special prize.

Saturday 13th August, 9am, Aquathlon - A 750m open water swim at the marina followed by a 5km run on a flat linear course along the promenade.

Sunday 14th August, 8:10am, Triathlon - A 750m open water marina swim followed by a 20km cycle and 5km run along the promenade.

If you don't want to enter the triathlon individually, there is the option of entering as a relay team to split the disciplines.

Introducing Highlight

the place for sport and leisure you've been waiting for



The computer generated image above shows the stylish design proposed for Highlight on The Waterfront.

Designed by GT3 Architects, the building's strong linear lines are inspired by the railway tracks which ran from local timber and coal yards into the former dockland site during the 19th and early 20th centuries.

Highlight will grow in height from west to east and offer incredible views of the wider waterfront site, marina and sea.

An application for planning permission was submitted recently, and is expected to go before the Council's Planning Committee in the summer. During the planning process, there will be opportunities for people to comment on the proposed development.

Councillor Shane Moore, Leader of Hartlepool Borough Council, said: "A lot of work has been going on behind the scenes and I am delighted that we are now able to share this image with residents to demonstrate the excellent progress that is being made."

The mix of facilities will include a 25m eight-lane main pool, a 25m four-lane learner pool with movable floor, a leisure pool including race slide and water play features, spectator seating, a 100 station gym, two interconnected fitness studios, an indoor cycling/spinning studio, active and soft play areas, a party room, a café, an NHS consultation suite and external ground and first floor terraces.

This reflects the desire for Highlight to be a must-visit destination and a community venue offering a range of opportunities and activities.

Highlight will also be surrounded by informal outdoor event and activity spaces to support walking, cycling, running, outdoor fitness, with connections for watersports, utilising Hartlepool Marina.

Paul Reed from GT3 Architects said: "We've worked closely with the Council and stakeholders to not only come up with an eye-catching and unique building that makes the most of its waterfront location, but to also develop a bespoke, flexible facility mix which will meet the needs of a variety of different user groups."

Cabs for Jobs initiative launched



A free taxi service has been launched in Hartlepool to make it easier for people to attend walk-in vaccination clinics and receive their Covid jabs.

Hartlepool Borough Council is funding the "Cabs for Jobs" initiative with money received from the Government's COVID-19 Outbreak Management Fund.

Access to transport has been identified as a key barrier to vaccination for some people, and the return taxi service aims to boost attendance at walk-in clinics organised by the Council in partnership with the NHS.

Open to all residents of the town, taxis can pick up people, wait for a maximum of 15 minutes while they get their vaccinations and then return them home.

The service began operating on 1st March and will continue for the rest of the month before being reviewed.

Craig Blundred, Hartlepool's Director of Public Health, said: "Despite the recent relaxation of Covid restrictions by the Government, the national vaccination/booster programme continues to be very important.

"In Hartlepool, we are keen to maximise vaccination uptake and we have been looking into the issues that can sometimes prevent people from attending our walk-in clinics.

"The number of people attending prior to Christmas was high, with over 1000 residents at each clinic, but since then figures have declined.

"We feel that this offer of free transport - together with our on-going strategy of rolling out walk-in clinics to different parts of the town - has the potential to really make a difference by making it far easier for people to get vaccinated."

 To book a taxi call (01429) 523330

Your views needed again to help shape pharmacy services

Many thanks to everyone who took part in our recent survey to help shape the future of pharmacy services in Hartlepool.

The survey responses are now being used to inform a review of the Hartlepool Health and Wellbeing Board's Pharmaceutical Needs Assessment (PNA), which will assess what services are currently available, how easily they are accessed and identify unmet needs.

A draft of that PNA will be subject to public consultation from 14th March to 13th May before the PNA is presented to the Health and Wellbeing Board for approval and implementation.

Craig Blundred, Hartlepool Borough Council's Director of Public Health, said: "We're committed to ensuring that residents have access to the best pharmacy services available because pharmacies play an important role in helping to maintain people's health and prevent illness.

"The Pharmaceutical Needs Assessment plays a key role in achieving those goals, so it's vital that it covers the needs of people in Hartlepool.

"So whether or not you took part in the first survey, if you've used pharmacy services in the past or are likely to use them in the future, please take part in this second stage of the consultation."

Once the public consultation starts on 14th March, people can take part online at www.hartlepool.gov.uk/PNA-second-consultation

Alternatively, people can complete a paper copy of the consultation at Hartlepool's Community Hubs and libraries or by contacting Joan Stevens, the Council's Statutory Scrutiny Manager, on 01429 284142 or email joan.stevens@hartlepool.gov.uk

Curtain rises again at theatre

Hartlepool Town Hall Theatre will open its doors to theatregoers for the first time in over two years this April.

Since its temporary closure in March 2020 during the COVID pandemic, the theatre has served as an NHS Vaccination centre, helping to deliver the town's vaccination programme.

The historic theatre – which celebrates its 125th birthday in September – will be hosting Northern Ballet's world-class production of Pinocchio on Friday 1st April, with performances at 2pm and 4pm.

The 40-minute ballet has been created specially for children aged 3+ and their families – it's a wonderful opportunity for your little ones to enjoy the magic of live ballet and theatre.



Harris Beattie and Bruno Serraclara in Pinocchio

Tickets cost £7 for adults and £5.50 for children – book at www.hartlepooltownhalltheatre.com

There's lots more to enjoy on the Hartlepool cultural scene

From 7th May to 9th July Hartlepool Art Gallery will be hosting a fascinating new exhibition on the fast-paced world of photojournalism.

Documentary and editorial photojournalist Mark Pinder has been at the forefront of breaking news for over three decades, capturing the events which have shaped British history.



Mark Pinder - An oil rig being decommissioned at the Able UK dismantling yard, Seaton Carew, November 2019

Alongside his work for major national and international publications, he has chronicled social, political and economic changes and his exhibition 'Macromancy: Britain and the North East of England 1985-2019' offers a unique insight into the impact of those changes on the region.

Before that there's still time to catch the gallery's two current exhibitions, running until 23rd April.

'The Female Gaze: Revisited' is a major retrospective on renowned artist-photographer Alice Hawkins, known for her glamorous pictures of some of the world's most famous cultural icons.

It showcases an extraordinary panoramic portrait of women around the world, examining changing perceptions of femininity, fashion and gender over the past two decades.

'Under the Vapour Trails' profiles the work of Tyneside-born author and illustrator Simon Bartram.

Brought up around 'sturdy' characters from the pubs and football terraces, his paintings and drawings look beyond the haircuts and hoodies and explore who these men really are and what it means to live in the North East.



In The Female Gaze: Revisited

The gallery is open 10am – 5pm Tuesdays to Saturdays and entry is free. For more information visit www.hartlepoolartgallery.co.uk

Discover the new-look Hub...

Community Hub South has been transformed during the pandemic and it's got lots to offer!

There's a much more welcoming feel to the Wynyard Road venue following substantial refurbishment including redecoration and new carpets and branding.

A new community space has been created to host a range of different activities and social groups, plus there's a new children's area and a community café offering tasty snacks and affordable meals.

Another new addition is the Wellbeing Suite where qualified staff can help residents with long-term health conditions to increase their activity levels in a safe way, helping them to stay connected and enjoy life.

The Hub is buzzing with lots to do each week, from the library, Hub Social and sensory room to the community choir, children's stories, Taekwondo and men's yoga.



**HARTLEPOOL
COMMUNITY HUBS**

It's open Mondays to Fridays 10am - 4pm and Saturdays 10am to noon. For more details visit **www.hartlepoolnow.co.uk** or Facebook Hartlepool Community Hubs or call 01429 272631. See you soon!



Community Hub South

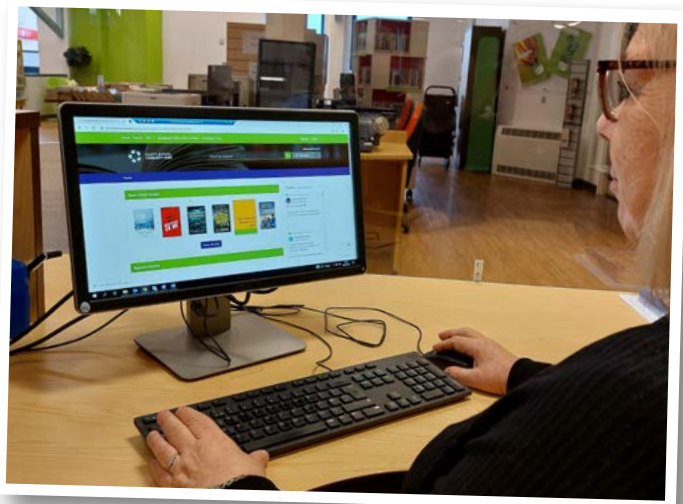
...and our new library website too!

A new, improved online library system will be in use at all Hartlepool's hubs and libraries from Wednesday 9th March.

The new system – the first for about 20 years – is much more user-friendly and features a website where you can not only search for titles and reserve a copy for collection, you can also find suggestions for new reads and titles on topical themes and leave your own book reviews.

The high-tech system will also make it much easier for staff to manage the library stock across all Hartlepool's library network, making books available where they are most needed.

Please note that while the new system is being installed the Headland and Seaton branch libraries will be closed from Monday 7th to Friday 11th March and a limited library service will be in operation at



Community Hub Central and Community Hub South from Monday 7th to Wednesday 9th March. We apologise for any inconvenience this may cause.

To find out more about the new library system visit **www.hartlepool.gov.uk/libraries** or speak to your local library staff.

Help shape Hartlepool's Hubs for the future

Thank you to everyone who took part recently in the first phase of the consultation to shape Hartlepool's Community Hubs to meet the needs of the future.

The way people use the Hubs and libraries continues to evolve and Hartlepool Borough Council is seeking people's views to help it develop a strategy for the Hubs for the next five years.

A second and final phase of consultation is now under way, running until Friday 18th March, to seek people's views on more detailed aspects.

For example, what do you think of the opening hours? Which services should be available where? Which services are relevant to you – such as reading or computer access, for example, or the Support Hub or events?

Councillor Tim Fleming, Chair of the Council's Adult and Community-Based Services Committee, said: "We want to make sure that in the years ahead our Hubs and libraries continue to meet people's needs and make a significant contribution to their lives and wellbeing, so it's really important for people to please give us their views."

You can have your say online at yoursay.hartlepool.gov.uk/community-hubs

There are also a number of drop-in consultation events where you can find out more and give your views:

- **Friday 11th March – Community Hub South, 10am-1pm**
- **Monday 14th March – Headland Library, 10am-2pm**
- **Tuesday 15th March – Middleton Grange Shopping Centre (Central Square), 10am-2pm**
- **Wednesday 16th March – Community Hub Central, 10am-1pm**
- **Thursday 17th March – Seaton Carew Library, 1pm-4pm**
- **Friday 18th March – Community Hub Central, 1pm-4pm**

Interactive seafront video trail launched

An interactive seafront trail has been launched in Hartlepool to encourage families to become more active together.

Part of Hartlepool Borough Council's Family Time project, the trail stretches for two miles from behind the Clock Tower at Seaton Carew to Maritime Avenue, close to Hartlepool marina.

Nine special "scan me" boards are located at intervals along the route, and all participants have to do is use their phones to scan the QR codes on the boards to access videos on a range of topics relating to Hartlepool.

Family Time Coordinator Paula Carroll said: "We have put the interactive trail and its videos

together with a range of partner organisations, including EDF Energy which operates Hartlepool power station and the wind farm off our coast, RSPB Saltholme and the National Museum of the Royal Navy, and we'd like to thank them for their support.

"It presents families with a great chance to spend some quality time together outdoors without having to ditch their technology! It's designed to be a fun activity that also has real educational value.

"You can do the full trail in one go if you so wish, or you can do part of it one day and the rest another, at a time that is convenient to you. It really is up to you."



For more information about the trail and other Family Time projects

 (01429) 284050  familytime@hartlepool.gov.uk  www.gethartlepoolactive.co.uk/family-time

Award-winning law firm that stands out from the crowd

The largest solicitors in the area can help with nearly all aspects of law. Our Hartlepool office has a team of dedicated Solicitors from three offices along York Road.

BUSINESS

Academy Conversions
Agricultural Law
Business Disputes
Commercial Property
Corporate Law
Employment law
Intellectual Property
Licensing Law
Recovery/Insolvency

FAMILY

Conveyancing
Criminal Defence
Divorce & Separation
Housing & Debt
Notary Public Service
Wedding Planner
Wills & Probate

INJURY

Industrial
Occupational
Medical Negligence
Personal Injury

MONEY

Investments
Wealth Planning



Your Family

Your Business



Your Injury

Your Money



T: 01429 264101 F: 0333 444 4420
W: www.tbilaw.co.uk

Tilly Bailey & Irvine LLP
York Chambers | York Road | Hartlepool | TS26 9DP

Tilly Bailey & Irvine LLP is authorised and regulated by the Solicitors Regulation Authority and is authorised and regulated by the Financial Conduct Authority for the conduct of investment business.



Offices across the North East

Breathing new life into historic Church Street

A derelict former takeaway in Church Street has been transformed in a major renovation scheme – a sign of the increasing confidence sweeping the historic area.

The former Mamma Mia's premises has been refurbished by Hartlepool Borough Council, creating a commercial unit on the ground-floor with two high-quality flats above.

Part of the Council's Capital Investment Programme, the scheme has been carried out by the in-house Construction Section.

The Council bought the premises as part of its aim to ensure that run-down properties do not detract from the on-going revitalisation of the area. Church Street itself has benefitted from a multi-million pound revamp to create a more open, pedestrian-friendly street.

Councillor Shane Moore, Leader of Hartlepool Borough Council, said: "This building was in an appalling state and the transformation is amazing."



Councillor Shane Moore, Leader of Hartlepool Borough Council, and Councillor Paddy Brown, Chair of Economic Growth and Regeneration Committee, outside the renovated building.

The premises had to be first cleared of debris and rubbish before being stripped back and effectively rebuilt.

Councillor Moore added: "The creation of a commercial unit and high-quality accommodation demonstrates the Council's commitment to the long-term regeneration of the town centre."



Councillor Moore and Councillor Brown in one of the new flats.

Councillor Paddy Brown, Chair of the Economic Growth and Regeneration Committee, said: "There are clear signs of how confidence in Church Street is growing, with increased private sector investment in new bars and restaurants."

More information about the commercial unit is available from Philip Timmins in the Council's Strategic Asset Management Department on (01429) 523228 or philip.timmins@hartlepool.gov.uk

The development of the flats received grant funding support of £78,000 from Homes England. They will be let at an affordable rent by the Council and advertised on Tees Valley Homefinder at <https://portal.teesvalleyhomefinder.org/>

Kirsty Birbeck, Provider Manager at Homes England, said "Despite the current challenges affecting the country, supporting new housing remains our number one priority. We will continue to do business with partners like Hartlepool Borough Council, who are committed to building vital new homes in the Hartlepool area."



Spring clean – make it green

With spring just around the corner here are some tips and ideas on how you can reduce your waste and clutter in an environmentally friendly way.

Get composting

Spring is a great time to compost your green waste, it is an inexpensive, natural process which transforms your kitchen and garden waste into nutrient-rich food for your garden. It's easy to make and use. Find out more at www.recyclenow.com/reduce-waste/composting

Clear out your wardrobe

Every year an estimated 336,000 tonnes of used clothing goes to landfill in the UK. Don't throw out your unwanted clothes as it has a significant impact on the environment. Instead help make fashion become more sustainable – visit www.loveyourclothes.org.uk for advice on how to make the most out of your clothes.

Waste Removal Service

We can't pick up things like furniture and large electrical items as part of your weekly collection. However, we can through our Waste Removal Service. We can collect your household items from the boundary of your property for a fee of £20 for up to three items, £40 for up to six items or £60 for up to 9 items. We are able to recycle a high proportion of the waste that we collect through this scheme. Alternatively, you can take the items to the Household Waste Recycling Centre. Find out more at www.hartlepool.gov.uk/wasteremoval

Other items

Books, DVDs, videos and CDs can't be collected for recycling from your home. But there are many recycling points around the town where you can take them. Go to www.recyclenow.com/local-recycling to find your nearest. Alternatively, donate them to a local charity a shop.



Household Waste Recycling Centre

You can dispose of your household waste at Burn Road Household Waste Recycling Centre. You need to book an appointment before visiting, as this allows us to keep all site users safe and ensure that queues do not build up outside of the site. To book an appointment visit www.hartlepool.gov.uk/hwrcbookings or call 01429 523333.

If you're waiting to book an appointment for your visit, please hold on to your waste. There is never any justification for fly-tipping. It is a criminal and anti-social offence that can result in prosecution. Report a fly-tipper at www.hartlepool.gov.uk/fly-tipping or call our Fly Tip Off Hotline on (01429) 523333. Please provide as much information as possible.

Brown bin collections resume

The Council's brown bin (garden waste) collections will resume this spring – check online for your individual collection dates at www.hartlepool.gov.uk/findmybinday. Remember that only loose, compostable garden waste will be accepted in the brown bin, such as grass cuttings, weeds and dead plants, twigs and small branches, hedge clippings, cut flowers and house plants, shrub prunings, leaves and the contents of hanging baskets.



Shopping local is the new trend

Over 200 businesses have now signed up to Shop Hartlepool.

The team went to meet some of these businesses with Councillor Shane Moore, Leader of Hartlepool Borough Council, Graham Soult from the national High Streets Task Force and Middleton Grange Shopping Centre Manager Mark Rycraft.

Coun Moore said: "Most local businesses are owned by Hartlepool people. We want to increase local spend to make sure that they have extra money in their pockets and are able to reinvest in the local economy."

Mr Soult said: "Shop Hartlepool is a great campaign. People are discovering that if they support their local businesses these are the businesses that feed things back into the community."

Mark Lloyd Jewellers

Mark Lloyd Jewellers in Park Road has been a regular name on the Hartlepool high street for 22 years. Mark said: "Half the problem is people don't know what's in their own town, but Shop Hartlepool is brilliant."



First Class Shoe Repairs

First Class Shoe Repairs, Key Cutting & Engraving has been based in Middleton Grange for over 30 years. Owner Billy Reid said: "It's important to get the message out to the Hartlepool public about what they have on their own doorstep, and that's what I like about Shop Hartlepool."

The Simple Weigh

At eco-friendly The Simple Weigh in Roker Street owner Lesley said: "A lot of people come in and say they only found out about us by being on Shop Hartlepool. It's been a really good forum for us."

Plantopia

Plantopia in York Road is run by mother and daughter team Linda and Emily, and was one of the first businesses to register with Shop Hartlepool. Linda said: "It's nice to be part of a team and everybody is promoting everybody."

Got Mallow?

Next door is Got Mallow, a unique marshmallow dining experience. Owner Owen said: "Saturdays are crazy busy and we've had to add an extra table just to try and make sure we can fit people in."



Sign Up Now

Head to www.shophartlepool.com/register and sign up to be part of the growing Shop Hartlepool community

shop Hartlepool



@lovehartlepool



@Love_Hartlepool



THE TALL SHIPS RACES
Hartlepool 2023

organised by Sail Training International

TALL SHIPS HARTLEPOOL 6-9 JULY 2023

tallshipshartlepool2023.co.uk



@TallShipsHpool

The countdown is on...

Hartlepool has the huge honour of hosting the world-famous Tall Ships again in the summer of 2023.

It comes after hundreds of thousands of visitors from far and wide flocked to the Borough when the vessels last visited in 2010 – the largest free event held in England that year.

Hartlepool Waterfront and its associated facilities are second to none and we proved during 2010 that we have the capability to host an event of this magnitude.

We've launched a brand new website – www.tallshipshartlepool2023.co.uk – where you can find out more about this fantastic event, including how you can volunteer and get involved.

Remember the fun we had last time?



Could you be a Councillor?

Hartlepool Borough Council requires different kinds of people from all backgrounds willing to stand for election; councillors who are willing, vibrant, energetic and engaged, with a commitment to local people and a passion for making change happen.

The role of the Councillor is vital in the local community because:

- They are a voice of the people
- They are champions of those who use local services
- They are critical to the effective functioning of democracy
- They play a very important role in helping to shape future services for the benefit of local people

On 5 May 2022, there will be an election for one Councillor in each of the twelve wards across the Borough.

Anyone interested in finding out more about standing as a councillor is invited to a pre-election briefing at Hartlepool Civic Centre on Saturday, 12th March at 10am.

The briefing will provide potential candidates with an opportunity to hear first-hand what it's like to be a councillor and to find out more about the electoral process, from nomination to the election count.

If you cannot make the briefing session and would like further information, please contact the Electoral Team by emailing elections@hartlepool.gov.uk, calling 01429 523088, or by visiting the Civic Centre for an informal chat.

Our climate pledge

Hartlepool Borough Council is committed to taking a leading role, playing our part, and working with individuals, communities, businesses, partners, and others across the Borough to act now on the causes and impacts of climate Change.

We commit to take action to reduce the Council's greenhouse gas emissions and limit the climate crisis.

Responding to climate change is an opportunity for positive change for both the Council and the wider Borough, with bold climate action an opportunity to deliver wide ranging benefits such as better air quality, improved health and wellbeing, economic growth for individuals and businesses, new jobs and skills and increased sustainable transport.

In short, Hartlepool will be a place that is sustainable, clean, safe and green.



Hartlepool Borough Council pledges to:

- **Be a net zero emissions local authority by December 2030**
- **Take a leadership role and work in partnership with stakeholders to influence and inspire in order to achieve net zero emissions for the Borough by 2050**
- **Adopt and publish the Council's Net Zero and Adaptation Plan by December 2022 and contribute to the UK's Net Zero Strategy**
- **Ensure every Council and committee decision takes account of climate change**
- **Invest in a range of net zero projects across our estate and operations to reduce emissions and improve our efficiency as an organisation**
- **Achieve 100% clean energy across the Council's full range of functions by 2030**
- **Tackle fuel poverty through investment in energy efficient and renewable technologies in domestic properties and support the delivery of net zero carbon new development**

Voting by post

Voting by post is an easy and convenient way of voting if you do not want to vote in person at a polling station.

You can use this form to apply to vote by post for a particular election or referendum, for a set period of time or for all future polls. Postal votes can be sent to addresses in the UK and abroad.

You must be registered and eligible to vote.

How do I apply to vote by post?

- Fill in the postal vote application form.
- Make sure you complete all sections of the form and supply your date of birth and signature. Your date of birth and signature are needed on this application form, and again when you use your postal vote. This information is needed to prevent fraud. If you are unable to sign this form, please contact your local electoral registration office.
- Return your form to **Elections Office, Civic Centre, Hartlepool, TS24 8AY**
or email: elections@hartlepool.gov.uk

You must return your postal vote application form by **5pm, 11 working days before the poll**.

If you are not already registered to vote, you must register before applying for a postal vote. The deadline to register to vote is **midnight, 12 working days before the poll**. Register to vote online at gov.uk/register-to-vote

What happens after I've returned this form?

- When an election or referendum is going to be held, your ballot paper will be sent to you in the post. To find out when your ballot paper will be issued you can contact the elections office at your council.
- Make sure you return your postal vote so that it arrives by the close of poll, otherwise it will not be counted. A Freepost envelope is included in your postal ballot pack. But, if you are sending it from overseas, you may need to pay the postage.
- If it is too late to send your vote back by post, you can hand it in on polling day to the elections office at your council, or drop it off at certain polling stations.

Privacy statement

We collect information under the legal basis of a task carried out in the public interest, as set out in the Representation of the People Act 1983 and related regulations. We will look after personal information securely and follow data protection legislation.

If you opted-out of the open register we will only use the information you give us for electoral purposes, including matching it against other sources of data to support the electoral register. We will not give personal information to anyone else, unless we have to by law. The law requires us to share your information with candidates, political parties and campaigners for democratic engagement purposes and credit reference agencies to check your identity when you apply for credit.

If you have not opted-out of the open register your name and address can be bought by anyone and used for lots of purposes, including direct marketing.

The Electoral Registration Officer is the Controller. For further information relating to the processing of personal data you should refer to their privacy notice on www.hartlepool.gov.uk.

Application to vote by post

Only one person can apply to vote by post using this form

Please write in **black ink** and use **CAPITAL LETTERS**. When you have completed every section and signed the form yourself send it to **Elections Office, Civic Centre, Hartlepool, TS24 8AY**. If you need help filling in this form please phone **01429 523088**

1 About you

Surname

First name(s) (in full)

Your address (where you are registered to vote)

Postcode

Phone number (optional)

Email (optional)

Providing an email and phone number gives a quick and easy way to contact you about your application.

3 Address for ballot paper (only required if different to the address where you are registered to vote)

Please send my ballot paper to (address):

Postcode

The reason I would like my ballot paper sent to this address, rather than my registered address is:

4 Your date of birth and declaration

Declaration: As far as I know, the details on this form are true and accurate.

I understand that to provide false information on this form is an offence, punishable on conviction by imprisonment of up to two years and/or a fine.

Date of birth: Please write your date of birth in the boxes below using black ink.

<input type="text"/>	<input type="text"/>	<input type="text"/>	<input type="text"/>	<input type="text"/>	<input type="text"/>	<input type="text"/>	<input type="text"/>
D	D	M	M	Y	Y	Y	Y

Signature: Sign below using black ink, keeping within the grey border.

If you are unable to sign this form, please contact your local electoral registration office.

2 How long do you want a postal vote for?

I want to vote by post (tick one box only):

- until further notice (permanent postal vote)
- for the elections/referendums to be held on
- | | | | | | |
|----------------------|----------------------|----------------------|----------------------|----------------------|----------------------|
| <input type="text"/> | <input type="text"/> | <input type="text"/> | <input type="text"/> | <input type="text"/> | <input type="text"/> |
| D | D | M | M | Y | Y |
- for the period
- from
- | | | | | | |
|----------------------|----------------------|----------------------|----------------------|----------------------|----------------------|
| <input type="text"/> | <input type="text"/> | <input type="text"/> | <input type="text"/> | <input type="text"/> | <input type="text"/> |
| D | D | M | M | Y | Y |
- to
- | | | | | | |
|----------------------|----------------------|----------------------|----------------------|----------------------|----------------------|
| <input type="text"/> | <input type="text"/> | <input type="text"/> | <input type="text"/> | <input type="text"/> | <input type="text"/> |
| D | D | M | M | Y | Y |

5 Date of application

Today's date

<input type="text"/>	<input type="text"/>	<input type="text"/>	<input type="text"/>	<input type="text"/>	<input type="text"/>
D	D	M	M	Y	Y

Find your ideal job in care or volunteering

A new website has been launched to make it easier for people to find jobs in care and volunteering in Hartlepool and for employers to recruit to those roles.

The Virtual Job and Volunteer Centre has been set up by Hartlepool Borough Council with help from local care providers and can be found at www.hartlepoolnow.co.uk/opportunities

The website is quick, easy and free to use. Employers can upload job adverts whenever they want and people can search for vacancies by proximity, job type, type of work and number of hours.

The launch coincides with the current national 'Made With Care' campaign to encourage people to explore the rewards of a career in adult social care – find out more at www.adultsocialcare.co.uk

Councillor Tim Fleming, Chair of the Council's Adult and Community-Based Services Committee, said: "We're delighted to launch this new website, which will help carers, volunteers and employers alike.

"People in the care and volunteering sectors in Hartlepool make a magnificent and vital contribution to the town and deserve our highest praise.

"They do amazing work, empowering the people they care for or help.

"Being a carer or volunteer are roles where personal qualities can often be even more important than qualifications and they offer the benefit of flexible working hours.

"They also bring with them unique personal and emotional rewards, and adult social care offers a wealth of opportunities for training and for building a very fine career.

"This new website could help you to take that first step on the way."

Supporting people to live independently

A Handyperson Service run by Hartlepool Borough Council is helping residents live confidently and safely in their own homes.

The service can carry out minor adaptations to homes, day-to-day DIY tasks and small repairs.

To be eligible, a person must live in Hartlepool and either be of pensionable age or have a chronic illness, disability, sensory impairment or other condition which restricts their day-to-day functioning.

To find out more call (01429) 284821 or email specialneedshousing@hartlepool.gov.uk

The service does not solicit work by doorstep calling

Special Needs Housing Manager John Whitfield said: "We can carry out work using materials supplied and fitted by the service, or using materials bought by a resident and fitted by us."

Examples of the former include fitting grab and bannister rails, carpet trims, door chains, installing

telephone extensions and making safe loose or trailing wires.

Jobs that can be carried out using materials bought by a resident include replacing light bulbs, changing fuses and plugs, fitting shelves and pictures, fitting curtains and blinds, replacing or fixing toilet seats, sealing around baths and showers and putting together or dismantling flat-pack furniture.

This is not an exhaustive list, and residents should contact the service to see how it can help them.



(left-right): Frank Blair and Scott Wallace

Hundreds of new homes coming to Hartlepool

A new 234-home development featuring significant contributions towards affordable housing in Hartlepool has been unanimously backed by Councillors.

Hartlepool Borough Council's Planning Committee has approved an application from Keepmoat Homes to demolish all existing buildings on the former Ewart Parsons site, off Brenda Road, and build a new housing development in its place.

Eighty four of the homes will be offered as affordable housing, including 28 bungalows. These affordable homes are set to be owned and managed by Hartlepool Borough Council, after receiving support from the Finance and Policy Committee in December.

The development will also feature a range of 150 private homes for sale, which will comprise of two, three and four-bedroom properties.

Councillor Shane Moore, the Leader of Hartlepool Borough Council, said: "This is a fantastic development which absolutely goes with everything that we've been saying over the past few years about the Council intervening and once again building our own housing stock to provide good quality homes and truly affordable homes for our residents."

As part of Keepmoat Homes' commitment to employment and opportunities in the region, the new development will both safeguard and create 725 construction jobs.

Ian Prescott, North East Land and Partnerships Director, said: "We are delighted to have secured planning consent along with the Brown Field Grant approval for this challenging site."



(left-right): Ian Worgan, from Keepmoat Homes, Councillor Shane Moore and Ian Prescott

"As well as bringing competitively priced high-quality homes for first time buyers to the town, the scheme will also deliver a significant number of much needed affordable homes. This will include bungalows for older persons or those with disabilities".

The business has secured a £1.9million Brown Field Grant from Tees Valley Combined Authority to assist the project, which will help transform the community and bring economic benefit to the area.

Multi-million facility to be redeveloped

The first phase of redevelopment of a multi-million-pound plastic recycling facility in Hartlepool is about to begin.

Sterling Polymers Ltd have purchased the former Wards Fibre Plant on Windermere Road, which already has a state of the art paper recycling plant.

They plan to invest £25 million – creating around 100 new local roles – to develop the site so that it also processes post-consumer and post-industrial flexible plastics.

The plant will be capable of processing 13 tonnes per hour, with a range of optical sorting, metal detection, screening, wash plant and then finally extrusion into a granule that can be used in manufacturing processes.

Councillor Shane Moore, the Leader of Hartlepool Borough Council, said: "I recently had the chance to visit the Sterling Polymers site and learn more about their exciting plans for Hartlepool."

"This will be the UK's first flexible packaging and re-processing plant of this type and I'm really looking forward to seeing facilities on the site expand over the coming years."

Tim Croxford, Operations and Compliance Director at Sterling Polymers Ltd, said: "Our management team has over 30 years' experience within the industry and this level of investment highlights our commitment to sustainability and also to the local area."

"We've been working with the Council's Economic Growth Team and look forward to further developing this relationship."



Signing heralds an exciting future

Another important step forward has been taken in Hartlepool's ongoing regeneration.

Hartlepool Borough Council and local landowner Jomast have signed a Memorandum of Understanding to work together to develop options for redeveloping the former Wesley Chapel and other sites owned by the company in the marina and waterfront area.

Councillor Shane Moore, the Leader of the Council, said: "We are delighted to sign this Memorandum of Understanding with Jomast.

"This is not only a significant first step in the redevelopment of the old Wesley Chapel, it also highlights the importance which the Council and Jomast place on developing the additional sites at the marina and the waterfront as well.

"It's important because it not only shows the Council and private sector again working together for the good of the town, it also shows how the money that Hartlepool is receiving from the Government's Town Deal is pump-priming other projects and investment, in addition to the £25m that was announced."

Stuart Monk, Jomast Managing Director, added: "We see this as a tremendous opportunity to bring forward



Councillor Shane Moore and Stuart Monk sign the Memorandum of Understanding

major investment into Hartlepool which will benefit the town in a very significant way.

"Our investment will produce fantastic new premises which will create opportunities for new businesses, and we'll be building some excellent, much-needed new housing, which will further enhance Hartlepool's reputation as a great place to live.

"Working together with the Council and the other development partners will help this happen in a much more effective way and we're looking forward to a very successful relationship."

Crab deaths probe results revealed

Defra and its partner agencies have completed a thorough investigation into the deaths of the crabs and lobsters washed up on the North East coast between October and December last year.

They say the results point to a naturally-occurring, harmful 'algal bloom' – a rapid increase in the population of algae in the water – being the cause.

They say it's unlikely that chemical pollution, sewage or infectious aquatic animal diseases were to blame. No trace of chemical contaminants have been found which could have caused an event of that scale.

A review of dredging activity and water samples found no evidence of a link between the disposal of dredged sediment and the deaths.

Defra says that while there is no food safety risk from eating crabs caught off the North East coast, it's reminding people again that it's not safe to eat any dead or dying crabs found along our coastline.

Although it's no longer an active investigation, Defra would still like to hear from people if they find anything of concern – call 0800 80 70 60.



Could you help a young person to fly?



Could you give an older child a caring, loving home, supporting them and sharing their journey of discovery as they grow into a confident young adult?

Could you help them spread their wings and fly?

Caring foster homes are urgently needed for children and young people in the Council's care – especially those aged 12 and over.

There's no typical foster carer, so please don't rule yourself out, whatever your age, background or circumstances. We'll give you all the training, financial and emotional support you'll need.

Fostering an older child can be a tremendously rewarding experience.

You can take great pride in helping steer them through the journey to becoming a young adult, encouraging them, supporting them through the challenges and low points and sharing the laughter and excitement of their successes.

How do you make a difference?

Kaitlyn is 18 and has lived in foster care for four years. Here's her story, in her own words.

"Before I came into foster care things were very difficult. I had struggled with making friends. I didn't have many friends because I didn't really leave the house.

"I struggled with going to school, so I dropped out - I didn't go to school for Year 9 and 10.

"When I went into foster care I went back to school to do my GCSEs in Year 11. I thought I'd give it a shot and I tried my hardest and achieved three GCSEs, though it wasn't my maths and English which I needed.

"I went to college straight after with the help of my foster carers. They were always telling me "Come on - you can do it!" - encouraging me and giving me the support I needed.

"When I went to college I was achieving A*s in my first year and I also got both my maths and English GCSEs.



Kaitlyn

"I'm now doing my last year of college studying health and social care and I hope to go to uni this year.

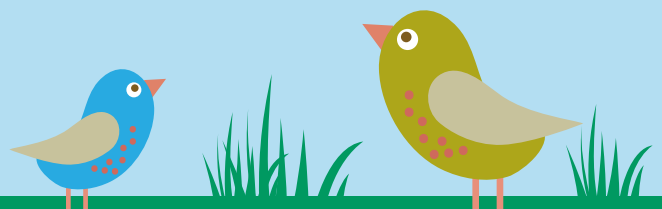
"I wouldn't have been able to do this without my foster carers. They've always been there to give me support and confidence, telling me that I am doing well and that I've come so far.

"I never believed in myself but after my foster carers being there with me I believe in myself and now I have a lot of confidence.

"I'm doing really good, I'm talking on panels for children and foster care, I have a part-time job and I hope to be a social worker myself."

Could you help a young person like Kaitlyn?

To find out more visit www.hartlepool.gov.uk/fostering, call 01429 405588 or email fosterandadopt@hartlepool.gov.uk





#Hartlepool Holiday Fun

Hatching lots of Easter fun!

There'll be lots of great activities for children and young people in Hartlepool aged 4 to 16 to enjoy over the school Easter holidays – and most of them will be free!

It's all part of Hartlepool Holiday Fun – a project run by Hartlepool Borough Council in partnership with different organisations across the town and funded by the Department for Education – providing activities and meals for children and young people over the main school holidays throughout the year.

It's designed for children who receive benefits-related free school meals, but other children can take part too.



Councillor
Jim Lindridge

Councillor Jim Lindridge, Chair of the Council's Children's Services Committee, said: "Since it was launched a year ago, Hartlepool Holiday Fun has been a tremendous success, with thousands of children across the town enjoying its Easter, summer and Christmas activities.

"Plans for the Easter holidays are still being finalised, but you can be sure they'll include another fantastic mix of activities and sports, keeping children and young people entertained and helping them discover new hobbies and skills, make new friends and build their confidence."



More details will be published shortly – keep checking www.hartlepool.gov.uk/hartlepool-holiday-fun for updates and details of how to book.



Self-Neglect... you don't have to face it alone

What is self-neglect?

Self-neglect can be when someone:

- neglects their personal hygiene
- neglects to care for their own health (this can include drug and/or alcohol misuse)
- neglects to care for their own surroundings
- hoards (to the point that it affects day to day tasks)
- refuses services, treatment, assessments or support, which could potentially improve their own care or care of their environment.

Arthur's Story

Arthur is 79 and lives on his own in a block of flats. Arthur is dependent on alcohol and can sometimes be aggressive when he has been drinking.

A housing officer visited Arthur and had significant concerns about the property. Arthur appeared to be hoarding household rubbish which was a fire risk. Arthur was also living in very unsanitary conditions, which could have impacted on his health.

The housing officer contacted the Adult Social Care team. The housing officer and social worker visited Arthur together, but he would sometimes be aggressive towards them or refuse to answer the door. Arthur was made aware that for his safety and others' his flat needed to be cleaned. Professionals continued to try and engage with Arthur and worked hard to gain his trust.

One day, Arthur contacted the housing officer to say he'd had a fall and was in hospital with a fractured leg. Arthur acknowledged that he needed help. The housing officer contacted Adult Social Care and a referral was made to the Fire Brigade, Tenancy Support and a local cleaning company.

As a result, Arthur was helped to clear and clean his property. He was supported to apply for benefits and was provided with advice to manage his debts. Arthur also agreed to have carers attend twice a week to help him with his cleaning and shopping. The housing officer established a good relationship with Arthur and continues to visit to check that he is managing.

"Work continues to support Arthur, and we have regular meetings with Social Services. Arthur is now much more open to support than he was previously" - housing officer.

Self-neglect is very complex and can be linked to physical or mental illness that has an effect on the person's physical abilities, energy levels, attention, organisational skills, or motivation.

In instances where someone has care and support needs, the Local Authority may be able to help. The Local Authority will always seek to work with the individual, gain their views and what they would like to happen. Where there are safeguarding concerns, professionals need to carefully balance protection of the person (and the impact on others) and the person's right to live their lives as they choose. Any plans of support will always be done by speaking with the individual, their family (if appropriate) and where relevant will sign-post or tap into support from other agencies.

If you have any concerns about self-neglect or want to find out more, please visit: www.tsab.org.uk

Self-neglect can also be reported to the relevant Adult Social Care team: Hartlepool: **01429 523 390**

www.tsab.org.uk/report-abuse/
There are also a number of support services available: www.tsab.org.uk/campaigns-andinitiatives/find-support-in-your-area/

Your Council Tax funds vital services

Thank you to residents who have paid their Council Tax, helping Hartlepool Borough Council to provide a range of vital services.

With more and more of the funding for services expected to come from Council Tax rather than Government grant, it is vital that the authority maximises the amount it collects.

Currently on course to collect 99% of all Council Tax due, we are keen to promote a range of online options that make it easier for residents to pay their bills or to claim exemptions/discounts they may be entitled to.

Provided by HBC Online, these can be accessed 24 hours a day, seven days a week.

For example, people can:

- Make a payment.
- Set up a Direct Debit.
- Request a PayPoint card.
- Apply for Local Council Tax Support
- Apply for a Council Tax discount or Second Adult Rebate
- Report a change of address
- Register for paperless billing

To access these services go to online.hartlepool.gov.uk/MyServices and click on the Council Tax tile.

In addition, the Council operates an automated Council Tax payment line on 0300 1230703.

Anyone who is struggling to pay their Council Tax is asked to contact the authority to discuss their circumstances by calling (01429) 284166 or emailing recovery@hartlepool.gov.uk

Any outstanding Council Tax for 2021/22 should be paid before the 31st March 2022.



RESPECT
EVERYONE DESERVES IT

Council's pledge to protect staff

Hartlepool Borough Council has reaffirmed its commitment to clampdown on violence and abuse towards staff by launching a new Employee Safety Policy.

The policy is part of the authority's on-going "Respect: Everyone Deserves It" campaign.

Councillor Shane Moore, Leader of the Council, and Managing Director Denise McGuckin have also jointly signed a declaration setting out the commitment to staff safety.

Mrs McGuckin said: "We want to send out a message that the safety of Council staff is paramount and that violence – actual or threatened, aggression, harassment, abuse and intimidation – including where this occurs online – is unacceptable and will not be tolerated.

"When carrying out their duties staff will deal with people who feel angry, anxious or not in control of important matters in their lives. The potential for abuse, intimidation or actual assault can exist in such situations. Minimising the risk to our staff is a key priority."

In the event of an incident, a range of action is open to the Council, including:

- **Restricting or removing access to Council buildings and services;**
- **Issuing a Community Protection Warning;**
- **Applying for a Civil Injunction or Criminal Behaviour Order;**
- **Reporting the incident to the police and seeking legal action.**

The Employee Safety Policy also applies to Council volunteers, agency staff, those working on the authority's behalf and councillors.



Managing Director Denise McGuckin and Councillor Shane Moore with the declaration

Go alternative!

Travelling more sustainably has a lot of benefits but can be difficult to start if you are used to other ways of getting around. Here's some tips for going green.

To make a new start it's useful to think of the benefits – and there are lots.

For you....

Walking and cycling are great for your health, be it physical or mental.

For your friends and family...

If you travel sustainably you will help others around you. Taking a vehicle off the road helps reduce pollution and congestion, especially at busy times – like during the 'school run'.

For the local environment...

Whilst you may not see it, petrol and diesel vehicles give off noxious pollutants that you breathe in. Reducing motorised traffic will also reduce congestion and space taken up by car parking.

For the Global environment...

The climate crisis has been well documented and the UK has set ambitious targets to reduce carbon emissions. Transport is one of the main contributors and it is a matter of 'every little helps'. Increase your footprints to reduce your carbon footprint!

For your pocket...

Walking and cycling are cheap ways of getting around – walk or bike that journey and save those pennies!

For the wider economy...

Whether its cutting pollution, reducing wear and tear on the roads or helping save costs to the National Health Service, sustainable travel has benefits to the wider economy.

Making that step forward!

it can be difficult when you're used to travelling by other means. Here are some ways to start;

- **Have a think about all the journeys you make – and make a list. Consider the smaller journeys or journeys where you have a bit of flexibility. Can some of these be walked or cycled? Alternatively, can you take the bus or train?**
- **Do a bit of research. There's plenty to help from Google Maps to Traveline. Locally, try out Connect Tees Valley and Let's Go Tees Valley.**
- **Do it for fun! A Sunday afternoon stroll or bike ride can easily turn into that journey to get to school, work or the shops.**
- **Ask advice. The Council's Sustainable Travel Officer can provide local travel advice.**

Where to find information

Google Maps - maps.google.com

Google maps is full of information including where the nearest bus stops are and points of interest. You can search route finding for different modes of transport.

Traveline - traveline.info

Traveline is the national journey planner website for bus, train, coach, tube and walking.

Connect Tees Valley - connectteesvalley.com

Connect Tees Valley provides public transport information and journey planning.

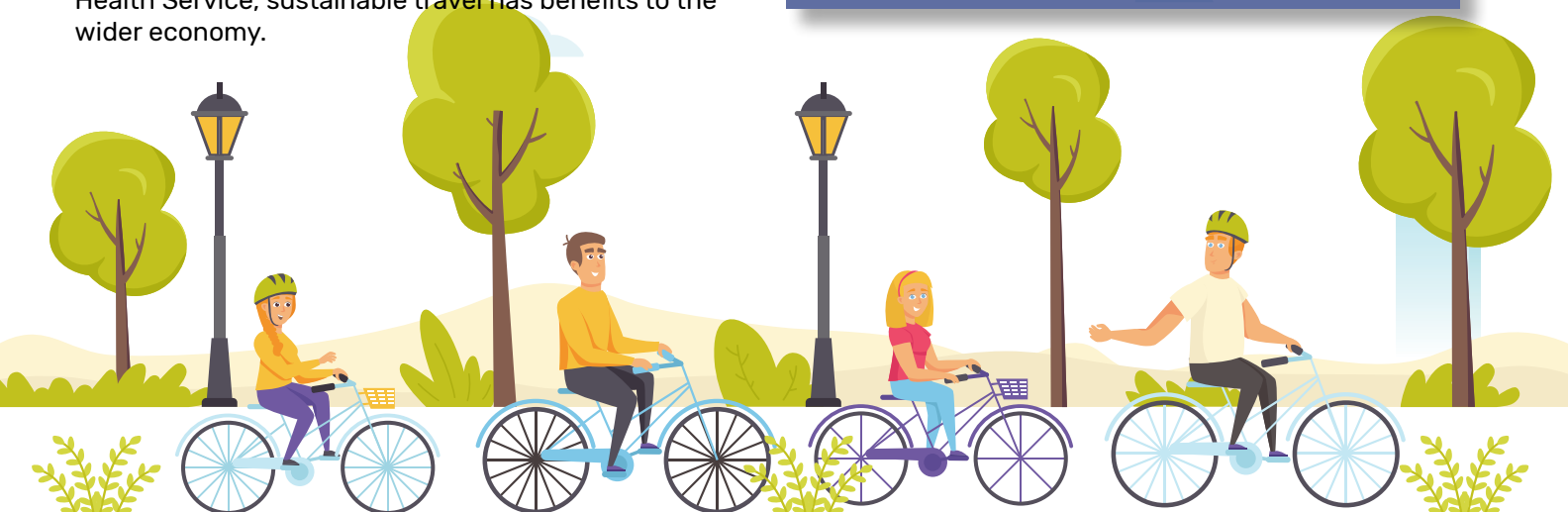
Let's Go Tees Valley - letsgoteesvalley.co.uk

Let's Go Tees Valley provides sustainable travel advice, tips and information.

Advice and help in Hartlepool -

safeonthemove@hartlepool.gov.uk

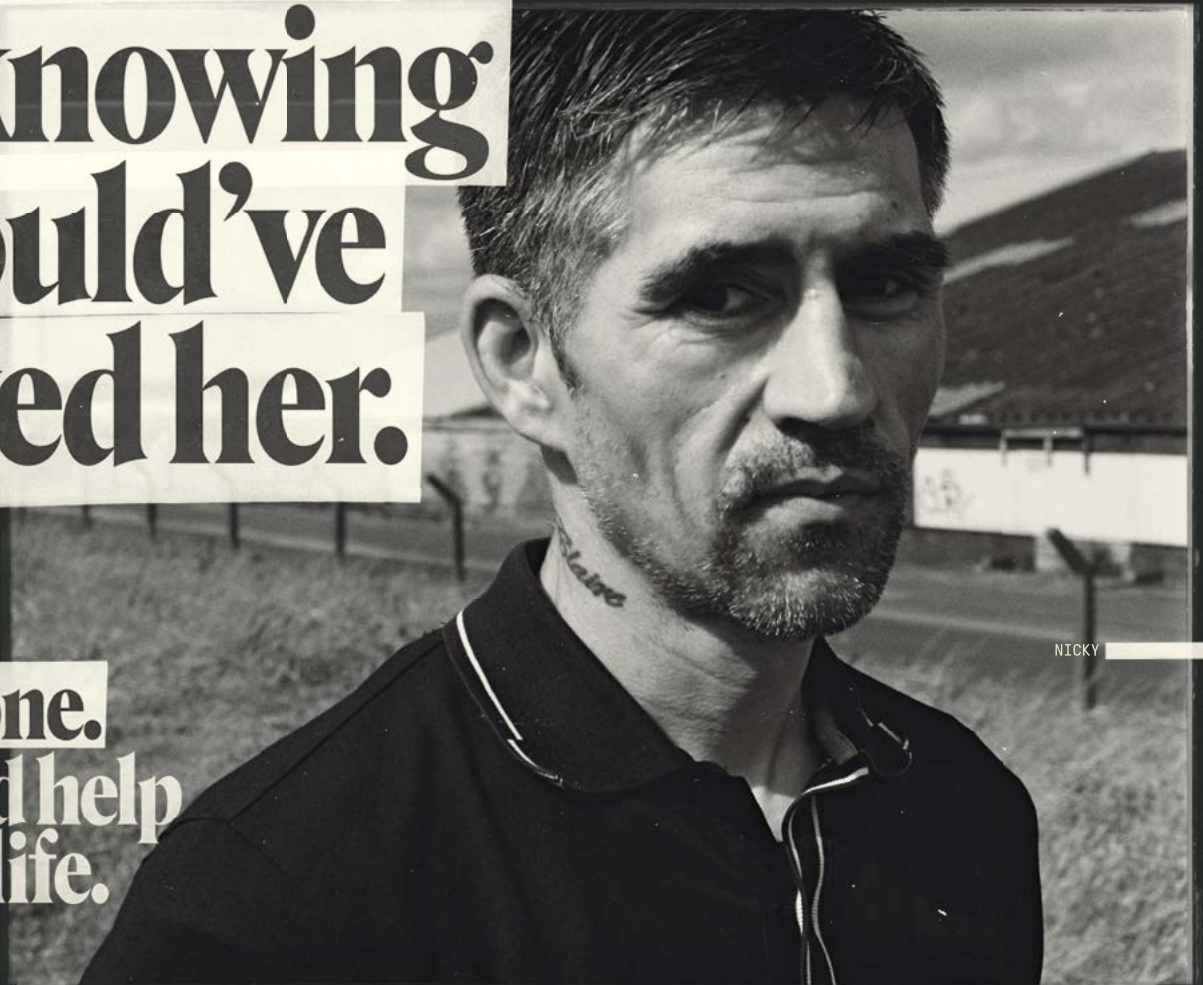
Contact the Council's Sustainable Travel and Road Safety Team for local advice and queries in travelling around Hartlepool and beyond.



The only
thing worse
than seeing
my fiancée
die of an
overdose
is knowing
I could've
saved her.

Naloxone can help reverse an opioid overdose. So if you use opioids or know someone at risk of an overdose, don't wait, visit START substance misuse service, on Whitby Street. START is a partnership between Hartlepool Borough Council and Foundations. You can contact the service on 01429 285 000 or substancemisuse@hartlepool.gov.uk

Carry
naloxone.
It could help
save a life.



Opioid overdoses kill thousands every year in the UK.¹ But those deaths could have been prevented – with naloxone. It's a drug that can help reverse an opioid overdose and help save lives. Signs of an opioid overdose include pinpoint pupils, unconsciousness, or breathing problems. Always call an ambulance first if you think someone is having an opioid overdose.

This campaign is sponsored by Etypharm and made in conjunction with real naloxone carriers.

1. Parsons G. Prescriber 2019; 30(12):19–23. Date of preparation: July 2021 | Job number: UK-PREN-28

The Family Support Service is here for you

Young people aged 0-18 years and their families are benefitting from access to a range of support services as part of the Tees Valley Neurodevelopmental Child and Family Support Service, jointly commissioned by NHS Tees Valley CCG and Hartlepool Borough Council, and managed by Daisy Chain.

The Family Support Service, which launched across Tees Valley back in December 2021, aims to provide support and services for children, young people and their families who display traits associated with neurodevelopmental diversity: autism, sensory processing, attention deficit hyperactivity disorder (ADHD), and Foetal Alcohol Spectrum Disorder (FASD).

The Service runs regular drop-in sessions at Hartlepool Borough Council's Community Hubs, where families and carers can discuss issues or get advice and guidance from multiple professionals, all in one place.

These sessions provide a safe space for parents and carers to meet others in a similar situation and provide the opportunity for everyone to support each other and to share experiences and ideas. The aim is to

provide a supportive and empowering environment for our parents and carers.

The Family Support Service is available to everyone – no diagnosis is needed to access services, and support is delivered at all stages, before, during and after diagnosis.

The groups are facilitated by a Family Support Team Leader, along with professionals from services that could include the 0 to 19 Service, SENDIASS (Special Educational Needs and Disabilities Information Advice and Support Services), the local Parent Carer Forum, SEND Caseworker and CAMHS (Child Mental Health Services).

For more information and to find out about the upcoming drop in sessions please visit www.hartlepool.gov.uk/family-support-service



Take control of your sexual health

Teesside Sexual Health Service offers free and confidential sexual health services across Teesside. It has never been easier to get sexual health advice, tests, treatment and contraception.

The service is open to people of all ages, genders and orientations and is non-judgemental. The face-to-face service is located at the Fens Medical Centre, 34 Catcote Road, Hartlepool, TS25 2LS, and offers free contraception advice, STI testing and access to long-acting reversible contraception.

There is also a range of online services available including advice, sexually transmitted infections (STI) home test kits and access to condoms and contraception.

It is really important to protect yourself from sexually transmitted infections and diseases such as chlamydia, gonorrhoea, syphilis and HIV by having safe sex and using a condom. Everyone aged 16-24 can join the free C-card scheme at local pharmacies or order free condoms online to be delivered to your door.

Recently, there has been a rise in cases of syphilis across Teesside and symptoms may not always be obvious. If you notice a change in your health including a painless sore (chancre) on your genitals, anus or around your mouth, a rash on your body, especially on the hands or soles of your feet, swollen glands or flu-like symptoms including a fever or headache get tested.

For information and advice contact the Sexual Health Service on 0300 3301122 from Monday – Friday between 9am–5pm to arrange an appointment or visit www.thesexualhealthhub.co.uk/services-near-you/teesside/



Family Trusts

Get strength on your side...

Tilly Bailey & Irvine
law firm



**Carolyn
Tilly**

Managing Partner
Tilly Bailey & Irvine

I am Carolyn Tilly, Managing Partner of Tilly Bailey & Irvine Law Firm and a member of its experienced Wills, Probate and Elderly Client Department.

I am often asked by clients whether setting up a Family Trust would be a good idea for them. The answer is often yes, as there are lots of advantages to setting up a Family Trust.

A Trust ensures security and protection for your assets and can make things as simple as possible for your family to deal with when you die. In fact, the need for Probate is often avoided altogether, which may help keep the costs of dealing with your estate down if the proposed rise in probate fees comes into force – this has been widely published in the press as a new *stealth tax*.

A Family Trust provides full protection for your beneficiaries, even if circumstances have changed. An example would be where your spouse or children (including adult children) have disabilities or lose capacity to deal with their own affairs.

It also protects against your children being disinherited as a result of your spouse remarrying after your death. Your chosen Trustees can deal with the property in the Trust in the same way as Attorneys would under a Power of Attorney.

“It is important to take advice from solicitors specialising in this area of law”

Since it would be your Trustees who control the capital of the Trust Fund, including your house, these assets should not in normal circumstances, be taken into account in the assessment of your means for contribution to the cost of any residential care fees or other means tested benefits. However, your solicitor will need to give you individual advice as to how the regulations about care fees would affect you.

If you are considering setting up a Family Trust, it is important to take advice from solicitors specialising in this area of law.

Tilly Bailey & Irvine have a team of legal experts and offer free initial advice regarding Property Trusts and Wills, all to help you decide what is best for you.

How much will it cost?

We charge a fixed fee, so there are no hidden surprises.

Contact us on **01429 264101** or visit our offices in Hartlepool, Wynyard, Stockton or Barnard Castle for the best support, and start feeling more secure!



Tilly Bailey & Irvine LLP

T: 01429 264101

W: www.tbilaw.co.uk

York Chambers | York Road | Hartlepool | TS26 9DP
12 Evolution | Wynyard Park | Wynyard | TS22 5TB
Castle House | 11 Bridge Road | Stockton-on-Tees | TS13 3AD
8 Newgate | Barnard Castle | DL12 8NG

Tilly Bailey & Irvine LLP is authorised and regulated by the Solicitors Regulation Authority and is authorised and regulated by the Financial Conduct Authority for the conduct of investment business.



@tbilaw



TillyBaileyIrvine



Tilly Bailey & Irvine

#StrengthOnYourSide

Online, *any time!*



With Hartlepool Borough Council Online, you can request and receive services when it's most convenient for you, 24 hours a day!

online.hartlepool.gov.uk