

Autism Plan on a Page 2020-2025



Contents

Contents	2
Context & Purpose	3
Key National Priorities	4
Hartlepool Plan on a Page 2020-2025	5
Hartlepool Local Action Plan	7

Hartlepool Day Services

Provider: Hartlepool Borough Council



AUTISM
ACCREDITATION

Registered: 01-08-2009

Standard: Community Support

Status: Accredited on 13-07-2018

Context and purpose

Autism is a lifelong developmental disability that affects how people perceive the world and interact with others. Autistic people see, hear and feel the world differently to other people. If you are autistic, you are autistic for life; autism is not an illness or disease and cannot be 'cured'. Often people feel being autistic is a fundamental aspect of their identity.

Autism is a spectrum condition. All autistic people share certain difficulties, but being autistic will affect them in different ways. Some autistic people also have learning disabilities, mental health issues or other conditions, meaning people need different levels of support. All people on the autism spectrum learn and develop. With the right sort of support, all can be helped to live a more fulfilling life of their own choosing.

How many people have Autism?

Autism is much more common than most people think. There are around 700,000 autistic people in the UK - that's more than 1 in 100.

Hartlepool

Autistic spectrum disorders

People aged 18-64 predicted to have autistic spectrum disorders, by age and gender, projected to 2023

	2019	2020	2021	2022	2023
People aged 18-24 predicted to have autistic spectrum disorders	75	73	71	70	70
People aged 25-34 predicted to have autistic spectrum disorders	118	120	120	118	118
People aged 35-44 predicted to have autistic spectrum disorders	99	101	103	105	109
People aged 45-54 predicted to have autistic spectrum disorders	125	119	115	111	107
People aged 55-64 predicted to have autistic spectrum disorders	125	130	130	131	131
Total population aged 18-64 predicted to have autistic spectrum disorders	542	544	540	534	534

Key National Priorities

The Autism Act 2009 placed a duty on the Government to produce and regularly review an autism strategy to meet the needs of autistic adults in England. The first ever strategy for autistic people in England entitled 'Fulfilling and Rewarding lives' was published, this was later reviewed and the Think Autism strategy was published in 2014.

Think Autism - 15 priority challenges.

1. I want to be accepted as who I am within my local community.
2. I want my views and aspirations to be taken into account when decisions are made in my local area.
3. I want to know how to connect with other people. I want to be able to find local autism peer groups, family groups and low-level support.
4. I want the everyday services that I come into contact with to know how to make reasonable adjustments to include me and accept me as I am.
5. I want to be safe in my community and free from the risk of discrimination, hate crime and abuse.
6. I want to be seen as me and for my gender, sexual orientation and race to be taken into account.
7. I want a timely diagnosis from a trained professional. I want relevant information and support throughout the diagnostic process.
8. I want autism to be included in local strategic needs assessments.
9. I want staff in health and social care services to understand that I have autism and how this affects me.
10. I want to know that my family can get help and support when they need it.
11. I want services and commissioners to understand how my autism affects me differently through my life.
12. I want people to recognise my autism and adapt the support they give me if I have additional needs such as a mental health problem, a learning disability or if I sometimes communicate through behaviours which others may find challenging.
13. If I break the law, I want the criminal justice system to think about autism and to know how to work well with other services.
14. I want the same opportunities as everyone else to enhance my skills, to be empowered by services and to be as independent as possible.
15. I want support to get a job and support from my employer to help me keep it.

Autism – plan on a page

healthwatch
Hartlepool

HARTLEPOOL
BOROUGH COUNCIL

Around 1.1% of the population in the United Kingdom are living with Autism

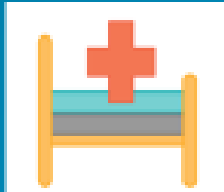
Five times as many males as females are diagnosed with Autism

Autism is **lifelong**
Children with autism grow up to be adults with autism

Diagnosis & Follow up **Presence & Participation** **Local need and Equality** **Work, Education and Training**

PDD-NOS	ASPERGER'S	AUTISM
Perseive Developmental Disorder – Not Otherwise Specified	Asperger Syndrome	Autistic Disorder "classic" autism
Fewer and milder symptoms Might cause only social and communication challenges	Some milder symptoms Might have social challenges and unusual behaviors and interests	Significant language delays Social and communication challenges Unusual behaviors and interests

Hartlepool Autism Action Plan 2020-2025



Diagnosis & Follow Up

- Timely access to diagnostic services and support to families and people with Autism following diagnosis.
- Clear pathways of support following diagnosis to ongoing support.



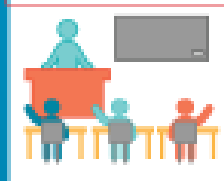
Presence & Participation

- Raise awareness of Autism and promote autism friendly services, to influence local change.
- Improve information, advice and guidance so I know where to look if I want to make new friends, join in activities or seek support.
- I want to contribute to society, feel safe and self improve.



Local need & Equality

- I want people to consider their services and how they impact on my condition.
- Commissioners to ensure my needs are reflected in future plans and strategies.
- Transitions in life to be anticipated in my future plans.



Work, Education & Training.

- Staff to be aware of my sensitivities, equality and diversity and to communicate in an effective manner, taking account of my sensory issues.
- Invest in technology to increase and maintain my independence.

AUTISM IS NOT A DISEASE, BUT RATHER A COLLECTION OF DISORDERS OF BRAIN DEVELOPMENT CALLED "AUTISM SPECTRUM DISORDERS."

Hartlepool Local Action Plan

Hartlepool Local Action Plan 2020-25

PLANNING	Specific to group	Key Agency	Lead	RAG	comments
Completion of Joint Autism SAF	All Age	HBC /CCG	LA / NECS		Completed and returned to Public Health England
TRAINING	Specific to group	Key Agency	Lead	RAG	
Develop a multi - agency Autism training plan.	All Age	HBC	LA		Workforce plan in place, requirement to develop a multi-agency plan. Potential to consider as part of the Health & Care Academy
DIAGNOSIS	Specific to group	Key Agency	Lead	RAG	
Ensure local Autism diagnostic pathways meet NICE Guidelines.	All Age	CCG	NECS		Hartlepool pathway has improved, waiting times better than other areas in the Tees Valley.

CARE AND SUPPORT	Specific to group	Key Agency	Lead	RAG	
Develop a single identifiable contact point where people with Autism can access information signposting	All Age	All LA's	LA		Progress the work to look at how the ISPA and the function of the Community Hub model can support a model to include Autism friendly entry points. CIL NAS Accreditation
ACCOMMODATION	Specific to group	Key Agency	Lead	RAG	
Ensure the Housing Strategy and Market Position Statements in Local Authorities include a focus on people with Autism.	All Age	All	LA		HBC is currently updating its Corporate Housing Strategy
EMPLOYMENT	Specific to group	Key Agency	Lead	RAG	
Establish employment options for people with Autism.	All Age	All	LA		Hartlepool Working Solutions
CRIMINAL JUSTICE SYSTEM	Specific to group	Key Agency	Lead	RAG	
Ensure Criminal Justice Services are engaged with the All Age Partnership.	All Age	All	LA		Noted a request from Tees Autism Group to present SAF findings to TSAB
Ensure access to an appropriate adult service is available for people with Autism	All Age	All	LA		Policing and Crime Act – Responsibility of the Police to commission, HBC offer an Appropriate person if person is known to services.

For further information

Telephone **01429 284371**

Email **neil.harrison_1@hartlepool.gov.uk**

Post **Hartlepool Borough Council,
Civic Centre, Victoria Road, Hartlepool, TS24 8AY**

