

# Council Plan

## Annual Report 2022/23





# Our vision

where people  
are enabled  
to live healthy,  
independent and  
prosperous lives.

that is  
sustainable,  
clean, safe and  
green.

that has an  
inclusive  
and growing  
economy.

**Hartlepool  
will be a  
place...**

where those who  
are vulnerable  
will be safe and  
protected from  
harm.

of resilient and  
resourceful  
communities with  
opportunities  
for all.

with a Council that  
is ambitious, fit for  
purpose and reflects  
the diversity of its  
community.

## Introduction

These are exciting times for Hartlepool. Over the past two years we have been laying the foundations for real change in the Borough. We have secured significant sums of external funding to enable some of our ambitious plans to be delivered. We are taking every opportunity to showcase what Hartlepool has to offer and to build on the potential that we have here in our wonderful part of the world.

Hopefully you have seen for yourself some of the improvements we've been making. From the new cycling track at Summerhill to the Local and Family History Centre at Sir William Gray House. As well as physical improvements across the Borough we have continued to focus on supporting people and communities across Hartlepool through the introduction of Warm Hubs, the delivery of events and activities for children and families throughout the year and by encouraging those who are starting or growing their own businesses within the Borough.

We recognise that we continue to face a number of challenges including high numbers of children and families who need our care and support, high levels of obesity and physical inactivity, increasing numbers of people looking for support for mental health issues and hardship related to the cost of living crisis and high levels of inflation. We will continue to change and adapt our services to ensure that they are accessible to those who need them.

At the same time we continue to face reductions in the funding we have available to deliver services across the Council. There will be difficult choices to be made in the coming year but we remain optimistic. We have a

workforce who strive to deliver the best for residents across the Borough and we know that with their continued dedication we will make our Borough an even better place to live, work, visit and invest.

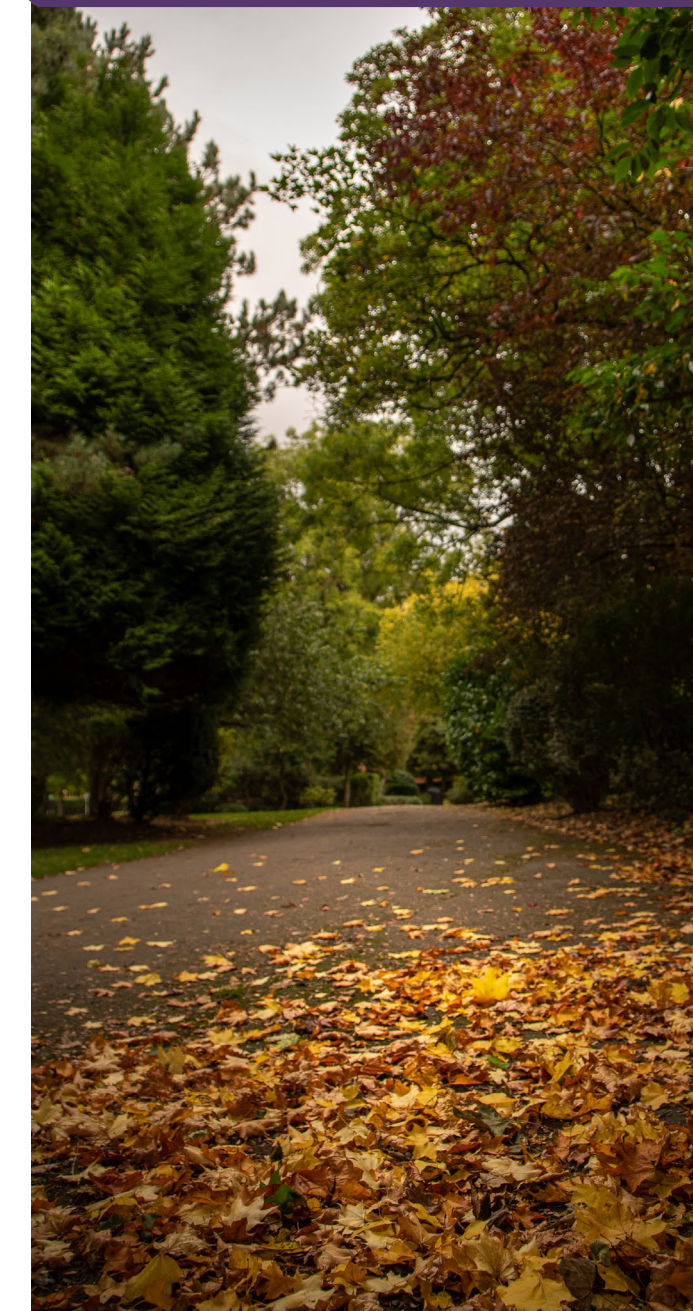
Over the following few pages you will be able to read about the progress that has been made over the last year and we will share what is planned for the coming year and beyond. We hope that you can see that positive changes are happening in Hartlepool and are as excited for the future as we are.



**Councillor Mike Young**  
Leader of the Council



**Denise McGuckin**  
Managing Director





# 2022/23 Timeline

May 2022

- Active Hartlepool launched
- Jubilee inspired artwork by school children on display in Middleton Grange Shopping Centre
- First ever Hartlepool Business Week held



July 2022

- Highlight Planning Permission Granted
- Merlin Manor Opened
- Gaia Exhibition in Town Hall Theatre
- Waterfront Festival



September 2022

- Hartlepool Warm Hubs approved
- National Moment of Reflection held at the War Memorial on Victory Square
- Family Fun at Elephant Rock



November 2022

- Fireworks display attracts approximately 15,000 people
- First ever Hartlepool Enterprise Week held
- Children in our care 'Celebration of Success' event held



January 2023

- Hartlepool Restaurant Week returned by popular demand
- Social Dance session launched at Community Hub South



March 2023

- New Equality, Diversity and Inclusion Policy adopted
- Road safety schemes completed in Wynyard Road and at Clavering School
- Work begins on the Wesley Chapel
- Parish Charter signed between the Council and the six Parish Councils

June 2022

- Queen Elizabeth's Platinum Jubilee events



August 2022

- Big Lime Weekend
- Hartlepool Horticultural Show held at Mill House Leisure Centre
- Summer at Seaton



October 2022

- Summerhill Cycle Track opened
- Hartlepool Restaurant Week held



December 2022

- Corporate Peer Challenge took place
- Christmas Pantomime – highest recorded ticket sales
- Free Christmas story trail in place around the town centre



February 2023

- Local Family History Centre opened
- Togetherall launched providing a safe, anonymous 24/7 community where people support each other to improve their mental health and wellbeing





# Achievements

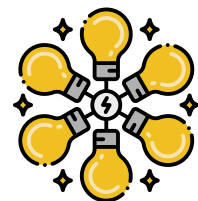
Holiday Activity and Food Programme – 42 providers, 743 sessions delivered with over 17,225 attendances from children across the Easter, Summer and Christmas holiday programmes



**£85K** of Levelling Up Parks Fund secured for improvements to Burn Valley Gardens

£88k of Esmee Fairbairn Collections Fund secured to deliver the 'Stories of the Sea' project working with underrepresented groups in the community

£650k secured to improve the energy efficiency of properties off the main gas network



**£200K** secured from the Libraries Improvement Fund for improvements to the Seaton Carew Library



£1.27m of Youth Investment Fund secured to refurbish the Rossmere Youth Centre

£25m Town Deal Funding secured to be spent across five key projects



**£16.4M**

Levelling Up Funding secured towards the development of a new Screen Industries Production Village in the Lynn Street / Whitby Street area

Up to £2m capital investment secured from Sports England towards the Highlight



£1.6m of funding secured from Tees Valley Combined Authority to manage a Tees-valley wide Multiply programme over the next two years

**34.9%** of Council spend goes to local suppliers



**307,116** digital transactions

**27,379** active HBC self-online accounts



Approximately 41,000 households benefited from the Council Tax Energy Rebate Scheme £150 payment



**89%** 'Good or outstanding' schools as rated by Ofsted

**100%** 'of Council led Children's Homes rated as 'Good or outstanding' schools by Ofsted

97.9% 'Good or outstanding' Adult Social Care providers as rated by CQC



18 Warm Hubs including Council buildings, churches and a range of voluntary and community groups



**226** homes improved through energy efficiency



**325**

Council homes



191 young people from Hartlepool supported through the Tees Valley Pathways and Routeways YEI programme



Digital Team award for Sustainable Warmth Initiative

Community Hubs approach to Community Led Support shortlisted in the Health and Social Care category of the Local Government Chronicle Awards



Summerhill and Ward Jackson Park retained their Green Flag Awards

Seaton Carew beach has retained its Seaside Award



Water Wellbeing Accreditation \recognised quality award from Swim England

Institute of Civil Engineers (North East), Constructing Excellence North East and National awards won for Elephant Rock



Hartlepool Local Area Partnership arrangements for children and young people with Special Educational Needs and/or disabilities (SEND) received the highest graded judgement from Ofsted and CQC

Highest number of enrolments in the Adult Education services in the last five years



Over 10,000 people supported through the Household Support Fund

Successfully bid for National Institute for Health and Care Research Contingency Funding to support new research activity



Supported the roll out of COVID-19 vaccinations across the borough for evergreen and booster offers

Worked in partnership with local Primary Care Networks to deliver additional support for identifying alcohol related conditions in order to tackle health inequalities





# Still to come

## Waterfront Connectivity



## Wesley Chapel Hotel Redevelopment



## Tees Valley Civil Engineering Institute



## Health and Care Centre of Excellence



## A new Family Hub in Middleton Grange Shopping Centre



## Re-imagining Middleton Grange Shopping Centre



## Catalysing Hartlepool's Screen Industry Production Village



## Second platform at Hartlepool Train Station



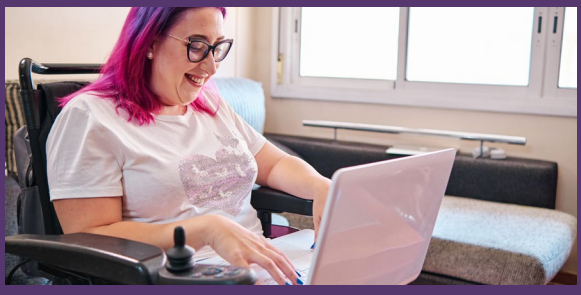
## Refurbishment of Rossmere Youth Centre



## New Free School for children and young people with Social, Emotional and Mental Health difficulties (SEMH) in partnership with the Department for Education



## Delivery of four new Changing Places facilities in the Borough



## Investment in grass sports pitches funded by the Football Foundation



## Highlight – Hartlepool's new wellbeing and leisure facility



## Restoration of the Wingfield Castle



## Expansion of the National Museum of the Royal Navy



## Refurbishment of the Museum of Hartlepool



## A Net Zero Plan for the Council



## More affordable homes for rent



## Opening of an additional Children's Home



## New carbon neutral substance misuse centre







[facebook.com/hpoolcouncil](https://facebook.com/hpoolcouncil)



[twitter.com/hpoolcouncil](https://twitter.com/hpoolcouncil)



[www.hartlepool.gov.uk](http://www.hartlepool.gov.uk)



**HARTLEPOOL**  
**BOROUGH COUNCIL**