

PLEASE NOTE VENUE

CHILDREN'S SERVICES PORTFOLIO

DECISION SCHEDULE



Tuesday 10th July 2007

at 10.00 am

in Conference Room 1, Belle Vue Community, Sports and Youth Centre,
Kendal Road, Hartlepool

Councillor Hill, Cabinet Member responsible for Children's Services will consider the following items.

1. **KEY DECISIONS**

- 1.1 Play Strategy 2006 – 2011 – *Director of Children's Services*

2. **OTHER ITEMS REQUIRING DECISION**

- 2.1 Revised Costings relating to the 2007/08 Capital Works Programme
2006/07 Capital Works Programme – *Director of Children's Services*
- 2.2 Connexions Delivery Plan 2007/08 Progress Report – *Director of Children's Services*

3. **REPORTS FROM OVERVIEW OF SCRUTINY FORUMS**

None

CHILDREN'S SERVICES PORTFOLIO

Report to Portfolio Holder

10th July 2007



Report of: Director of Children's Services

Subject: PLAY STRATEGY 2006 – 2011

SUMMARY

1. PURPOSE OF REPORT

- To seek approval of the Play Strategy 2006 – 2011.
- To seek approval for submission of a Portfolio of play projects to the Big Lottery.

2. SUMMARY OF CONTENTS

The Local Authority has been allocated a total of £297,457.46 from Big Lottery Funding through the Children's Play Initiative. There is a requirement that the Local Authority must develop a Play Strategy alongside a submission of projects.

A Play Partnership has been established to develop a Play Strategy and monitor its effectiveness. The Play Partnership is made up of many organisations, a membership list can be found at the end of the Play Strategy (**attached as Appendix A**)

The attached Play Strategy (**Appendix A**) sets out the aims and principles of the Local Authority and its partners in relation to play across Hartlepool.

An action plan consisting of seven objectives is included in **Appendix B**.

A portfolio of play projects approved by an independent grant panel is included in **Appendix C**.

3. RELEVANCE TO PORTFOLIO MEMBER

The Portfolio Holder has responsibility for Children's Services.

4. TYPE OF DECISION

Key decision (tests 1 and 2 apply).

5. DECISION MAKING ROUTE

Portfolio Holder meeting 10th July 2007.

6. DECISION(S) REQUIRED

- To approve the Play Strategy 2006 – 2011.
- To approve for submission a portfolio of play projects to the Big Lottery.

Report of: Director of Children's Services

Subject: PLAY STRATEGY

1. PURPOSE OF REPORT

- To seek approval of the Play Strategy 2006 – 2011.
- To seek approval for submission of a portfolio of projects to the Big Lottery.

2. BACKGROUND

There has been a number of documents published setting out the benefits of play for children. The benefits include:

- Play provides valuable life skills and is vital to their development;
- Play is integral to learning, but cannot be taught through formal education;
- Play keeps children and young people healthy and active;
- Play promotes independence, resilience, fosters self esteem and self awareness;
- Play stimulates five key areas of development in a child, social, physical, intellectual, creative and emotional;
- Play is fun;
- Play raises the awareness of different cultures and traditions;
- Disabled children will benefit from being able to play with other children in a safe and accessible environment.

The Big Lottery has allocated £124 million for Children's Play across the country. Each local authority area has been allocated an amount of money based on the child population of the area and weighted by the level of deprivation. Hartlepool Borough Council has been awarded £297,457.46.

In order to receive this funding the local authority is required to submit a portfolio of projects that fulfils the following:

- create, improve and develop children and young people's free local play spaces and opportunities throughout England, according to need;
- support innovation and new ways of providing for children's play;
- create a support and development infrastructure to ensure local agencies have the resources and skills to achieve the first two aims;
- promote the long-term strategic and sustainable provision for play as a free public service to children;

- ensure that local authorities work with other local stakeholders to develop children's play strategies and plans;
- ensure that good, inclusive and accessible children's play services and facilities are provided locally.

In addition to the portfolio of projects the local authority needs to develop and submit a Play Strategy. The Big Lottery has published strict guidelines on the contents of a Play Strategy. The attached Play Strategy has been written in accordance with these guidelines. Hartlepool needs to submit their Play Strategy and portfolio of projects to the Big Lottery by 31st August 2007.

3. **PLAY PARTNERSHIP**

The Big Lottery have issued guidelines in the development of a Play Strategy. The guidelines include the requirement for local authorities to set up a Play Partnership.

The Play Partnership in Hartlepool was set up following a consultation event with stakeholders. Stakeholders identified key people needing to attend the Play Partnership, the membership of the partnership can be found in **Appendix 1**.

4. **CONSULTATION**

The Play Partnership has developed the strategy after two rounds of consultation. The consultations involved children and young people and parents. The findings from the consultation can be found in the Play Strategy. The information gathered from the consultations has been used to inform the development of the Strategy.

5. **PLAY STRATEGY**

The Strategy (**Appendix A**) sets out the vision and key principles underpinning the development of play opportunities in Hartlepool. It sets out how partners will work together to improve play opportunities and outlines the "Case for Play".

An action plan (**Appendix B**) is attached to the Strategy which sets out a number of actions in the following areas:

- Developing a co-ordinated approach to play;
- Increasing play space and play opportunities;
- Developing the quality of play opportunities;
- Further developing the participation of children, young people and local communities;

- Enabling all children and young people the opportunity to experience acceptable risks in their play;
- Improving accessibility to all play settings;
- Ensuring play provision is sustainable.

The action plan is a working document and will be updated regularly. Baseline information to inform the setting of measurable outcomes is currently being collated to be added to a final copy of the action plan to be submitted to the Big Lottery in August. A copy of the action plan with the added baseline information will be included in the Information Pack to the Portfolio Holder in September 2007. A six monthly update on progress of the action plan will be submitted to the Portfolio Holder.

6. PORTFOLIO OF PROJECTS

The Big Lottery have allocated £297,457.46 to the local authority through the Children's Play Initiative. The Big Lottery require the local authority to set up a play partnership. The play partnership is required to identify play projects to be developed and included in the Portfolio of projects.

The Play Partnership have established an independent panel to develop the Portfolio projects. The Play Champion (Portfolio Holder for Children's Services) chairs this independent panel. Community organisations were asked to submit projects to the panel for inclusion in the Hartlepool portfolio of play projects.

The projects to be included in the portfolio of projects are attached as **Appendix C**.

7. FINANCIAL CONSIDERATIONS

The portfolio of play projects being submitted to the Big Lottery equates to £297,457.46. the local authority are the accountable body for the funding however the Big Lottery expect the local authority to devolve the funding to community groups as agreed by the Play Partnership. All other actions in the action plan are to be carried out within current resources.

8. EQUALITY AND DIVERSITY CONSIDERATIONS

All projects within the action plan are inclusive ensuring children with disabilities and children from vulnerable groups are able to access the play opportunities.

9. SECTION 17

The activities within the action plan all contribute to children accessing high quality play opportunities. These opportunities support children to develop personal and social skills.

10. RECOMMENDATIONS

The Portfolio Holder is recommended to approve the Play Strategy 2006 – 2011 and to approve the Portfolio of projects to be submitted to the Big Lottery.

11. REASONS FOR RECOMMENDATIONS

The Play Strategy needs to be approved in order to submit the portfolio of projects to the Big Lottery to receive Big Lottery Funding.

12. CONTACT OFFICER

Danielle Swainston
Sure Start, Extended Services and Early Years Manager
01429 523671

A PLAY STRATEGY FOR HARTLEPOOL

TABLE OF CONTENTS

	Page
Acknowledgments -----	3
Executive Summary -----	4
Vision -----	5
Key Principles -----	5
Purpose and Scope -----	6
Introduction -----	7
Definition of Play -----	8
The Case for Play -----	10
Context -----	12
Quality -----	14
Risk Management -----	16
Review of Community Engagement -----	18
Audit of Local Provision -----	21
Objectives -----	24
Appendices –	
Appendix 1 – Play Partnership Membership	
Appendix 2 – Play Partnership Terms of Reference	
Appendix 3 – Links to Strategies & Local Plans	
Appendix 4 – Consultation Information Source	
Appendix 5 – Children and Young People Consultation Findings	
Appendix 6 – Audit Of Provision	
Appendix 7 – Graphs, Local Nature Reserves & Beach Patrolled Areas, Parks & Recreation Grounds & Play Areas within Hartlepool	
Appendix 8 - References to produce the Strategy	

ACKNOWLEDGEMENTS

Hartlepool Borough Council, Children's Services Department, Sure Start, Extended Services and Early Years Team gratefully acknowledges the following people who have supported and provided input into the development of the Play Strategy and Action plan for Hartlepool.

The Play Partnership
The Play Champion
The Independent Grants Panel
Voluntary & Community Sector
Children & Young People from schools in Hartlepool
Parents and Local Residents
Play Workers

EXECUTIVE SUMMARY

The Play Strategy for Hartlepool 2006 –2011 has been developed to provide a framework for increasing Hartlepool's capacity to provide good quality play opportunities for all children and young people.

The strategy is founded on the principle of Children's Right to Play as stated in Article 31 of the United Nations Convention on the Rights of the Children.

The strategy recognises the importance of play for all children and its fundamental role in children's development. It also recognises that every child needs a variety of play opportunities for their development.

The strategy has been developed in consultation with service providers in the statutory, voluntary and private sectors, parents, children and young people. An audit of provision was carried out to ascertain current levels of provision and identify gaps.

A wide range of strategies and plans have also been taken into consideration to ensure that links are made with reference to accessible play opportunities.

Children's play is affected by and can affect a wide range of provision, such as transport, health, parks and leisure, childcare and early years provision. These wide ranging aspects are reflected in the action plan.

A Play Partnership has been developed to include a diverse membership. The Partnership will monitor the progress of the action plan to ensure that play opportunities are accessible to all children in Hartlepool.

The Action Plan covers seven objectives, which reflect the Every Child Matters Outcomes, and Hartlepool's Children and Young People's Plan and incorporates feedback from consultation undertaken with children, young people, parents, groups and other agencies. The seven objectives featured in the strategy are:

- Develop a coordinated approach to play
- Increase play space and opportunities
- Develop the quality of play opportunities
- Further develop processes that facilitate the participation of children, young people and local communities
- Offer all children and young people the opportunity to experience acceptable risks in play
- Improve safe accessibility within formal and informal play settings
- Sustainability of play provision

VISION

‘The right to play is a child’s first claim on the community.’

David Lloyd George 1925

Our vision is to enhance and increase quality and accessible inclusive play opportunities for children and young people living in Hartlepool. Every Hartlepool child (0 – 19 years of age) should be able to lead safe, healthy and fulfilling lives, enhanced by accessing good quality play.

KEY PRINCIPLES

The overarching principles of the Play Strategy reflect the Every Child Matters Outcomes and principles within the Hartlepool’s Children and Young People Plan and further include the following:

- Every child and young person regardless of where they live have the opportunity to accessible and freely chosen play opportunities
- Every child and young person regardless of their ability has the right to high quality, safe play opportunities that meet their need
- Improve opportunities for play and informal recreation
- Promote enjoyment for children and young people
- Promote equality and social inclusion, by ensuring that play is attractive, welcoming and accessible to every child and young person regardless of age, gender, background, ethnic origin or disability
- Promote community use of schools
- Engage in partnerships with the voluntary sector, town and parish councils

PURPOSE AND SCOPE

It is recognised that children and young people do not need a play strategy to engage in free imaginative play. However a play strategy will ensure play is valued across all sectors and the benefits of play are appreciated by all members of the community. It will also support the reduction of barriers to play and ensure inclusive play opportunities are offered to all children.

The strategy will:

- Be the vehicle to enhance and ensure the right of every child and young person to engage in a play opportunity be it formal or informal
- Ensure all children and young people have the right to play as defined by the 1989 UN Convention on the Rights of the Child and ratified by the UK in 1991.
- Inform other Departments within the Council of their responsibilities towards children and young people when developing, delivering and planning services that may impact on play opportunities.
- Act as a lever to influence play policies and good practice of partner organisations and agencies

For the purpose of this strategy, play is defined to cover the activities of children and young people from 0 – 19 years, how they occupy themselves and how they engage in both structured and unstructured activities.

The strategy will also provide a framework within which future funding decisions are made in relation to play and provide a clear commitment to the play agenda as is the Big Lottery allocation of £297,457.46.

Play covers a wide agenda and this strategy will focus on those areas identified within the action plan as being potential gaps in provision across Hartlepool and the needs and wants identified within the various consultations with children and young people.

INTRODUCTION

The Play Development Team within the Children's Services Department, Hartlepool Borough Council provides information and support to play providers across the town. The Play Development team also deliver a play service to children of Hartlepool.

A Play Partnership has been formed to develop, implement and review the strategy and review play provision in Hartlepool for the future. The Play Partnership will feed into Hartlepool's Children & Young People's Partnership to ensure that the action plan is monitored and reviewed.

The membership covers a wide range of partners, including Local Authority Departments, Voluntary, Community, Private and Health Sectors. The membership and terms of reference of the partnership are detailed in Appendix 1.

The Local Authority has lead in the development of the Play Strategy to ensure that partners consider the issues related to accessible play in service planning. The Play Strategy sets out a number of objectives which have been based on the views of children and young people in consultation (details of the consultation can be found in Appendix 5).

The Play Strategy is part of Hartlepool Borough Council's commitment to partnership working, to ensure that good quality and inclusive play opportunities are available to children and young people in local areas to help them to fulfil their own potential in life.

DEFINITION OF PLAY

What is Play?

‘Parties recognise the right of the child to rest and leisure, to engage in play and recreational activities appropriate to the age of the child and to participate freely in cultural life and arts.’

‘Parties shall respect and promote the right of the child to participate fully in cultural and artistic life and shall encourage the provision of appropriate and equal opportunities for cultural artistic, recreational and leisure activities.’

‘The term play refers to the free time activities of children and young people of all ages when they are choosing what to do, usually with their friends and without direction from adults’.

Article 31 of UN Convention

‘Play is freely chosen, personally directed, intrinsically motivated behaviour that actively engages the child.’

‘Play is a way children explore the world around them and develop and practise skills.’

‘Play is not the destination, but the journey.’

‘Play is one of the fundamental processes which enhances life and is a right.’

‘Play can be fun or serious. Through play children explore social, material and imaginary worlds and their relation with them.’

‘Taking risks, exploring, pushing boundaries, flying the nest.’

*Children’s Play Council – Planning for Play
March 2004*

‘Play is of fundamental importance for children and young people’s health and well-being’.

Planning for play 2006

'Play is an essential part of children's development. As they grow older, sport and other forms of physical recreation can set healthy patterns of exercise lasting into adulthood. Participation in and appreciation of music, visual arts and literature can all add to understanding the world. But, more importantly, these activities bring joy and richness to life. They should be offered as an entitlement to all children and young people.'

Children and Young People A Framework for Partnership – consultation document

'Play is a child's first claim on the community. No community can infringe that right without doing deep and enduring harm to the minds and bodies of its citizens'

Lloyd George, 1962

What do we mean by play?

The definition used in the play review, "Getting Serious about Play", published in 2004, states:

'Play means what children and young people do when they follow their own ideas and interests, in their own way and for their own reasons.'

Play provision is also defined within this publication as:

'A space, some facilities or equipment or a set of activities intended to give children the opportunity to play as defined above. At its most successful, it offers children and young people as much choice, control and freedom as possible within reasonable boundaries. This is often best achieved with adult support, guidance or supervision. The children and young people may themselves choose play involving certain rules or, in some cases, informal sport.'

THE CASE FOR PLAY

In August 2006 the Department for Culture, Media and Sport produced a document, – “Time for Play”, encouraging greater play opportunities for children and young people

The focus of this document is on Government action to encourage the promotion of greater play opportunities for children and young people. It concentrates on the importance of play, as well as some of the key issues relating to it.

The document states that play provides children and young people with an important opportunity to develop their values, beliefs and traditions and understand how they impact on their environment.

The benefits of play for the child

- Play provides valuable life skills and is vital to their development
- Play is integral to learning, but cannot be taught through formal education
- Play keeps children and young people healthy and active
- Play promotes independence, resilience, fosters self esteem and self awareness
- Play stimulates five key areas of development in a child, social, physical, intellectual, creative and emotional
- Play is fun
- Play raises the awareness of different cultures and traditions
- Disabled children will benefit from being able to play with other children in a safe and accessible environment

The added benefits of play for parents, carers and the community are:

- Improved family relations
- Social contact with other families, including those from marginalised groups
- Healthy and resilient children
- Happier and more confident children
- Involvement of children in creative and positive activities
- Anti-social behaviour is reduced and children are less at risk of crime
- Facilities are a focal point for the community
- Families are supported
- Young people are helped to prepare for working life – Every Child Matters (Outcomes Framework)
- Improved cultural and learning activities through informal setting

INCLUSION

‘Inclusive provision is open and accessible to all and takes positive action in removing disabling barriers, so that disabled and non-disabled children can participate’

Alison John

‘All children have the right to rest and play.’

Article 31

‘Disabled children must be able to take a full and active part in everyday life.’

Article 23

Disabled children and young people should have the right to be part of any local play environment they choose.

The Play Strategy will ensure that the play and leisure requirements of disabled children and young people are respected and promoted.

Inclusive play is clearly highlighted within the Action Plan in objective 2 and should be seen as an integral part of providing play opportunities for all children, regardless of their abilities and not as a separate issue.

Hartlepool Council and its partners will work in partnership with vulnerable groups to increase access to play opportunities and reduce barriers to play as identified in the action plan, objective 2.

CONTEXT

National Context

The importance of play and the importance of ensuring there is adequate space for play have been the subject of campaigning and awareness raising at a national level for a number of years.

The Children's Play Council, the national organisation for children's play in England, has produced a number of significant documents in recent years, including "Best Play".

Every Child Matters (ECM) is a shared national programme to ensure that children's services work better together with parents, carers and organisations to help give children and young people more opportunities and better support. Play contributes to all the ECM outcomes;

- Be Healthy
- Stay Safe
- Enjoy and Achieve
- Make a Positive Contribution
- Achieve Economic Well – Being

The Dobson Review 'Getting Serious about Play', was a government commissioned document to advocate and raise the profile of play across government departments. The report prompted a funding scheme for play from the Big Lottery Fund in England and Wales of £155 million for 2006 – 2009. This has been allocated to each unitary and district according to a formula based on the number of children and the indices of multiple deprivation. One of the key criteria for gaining access to the allocation is that the projects put forward for funding must have a basis in a Play Strategy.

The allocation determined for Hartlepool will enable Hartlepool to fund more activities that are:

- Free to access
- Free to come and go
- Freely chosen by children and young people

Local Context

Play contributes to the ECM five outcomes and Hartlepool's Children and Young People's Plan.

Hartlepool has an excellent reputation of working well with partner agencies and listening and taking action from community consultation and views. A key message from Hartlepool's recent Joint Area Review from inspectors was:

"The level of commitment, enthusiasm and pride in staff at all levels in delivering quality services to Hartlepool is outstanding."

Hartlepool is a compact and densely populated town, located on the North East coast of England at the North Eastern end of the Tees Valley. The population is largely concentrated in the urban area, although the Borough as a whole (9,386 hectares) is predominantly rural, with some district villages and attractive countryside. Overall the population of 90,161 (2003) is projected to decline slightly over the next ten years, with older age groups increasing and younger age groups reducing. The 0 – 19 age group represents 27% (24,269) of the population, which is above the national average (23%), although this is projected to fall by over 12% over the next 13 years. The ethnic minority population is low (1.9%), but significant.

According to the Index of Multiple Deprivation (IMD), eight out of Hartlepool's sixteen wards are among the top 10% most deprived in England, with five of these wards being in the top 3%. Unemployment in January 2006 stood at 4.4% compared to 2.6% nationally. The 2001 census indicated that 60.1% of households (22,684) had a car, 8.7% (3,234) were single parents and 21.4% (7,986) were households with dependent children. Based on figures from The Office for National Statistics, using the mortality rate for England and Wales as 100, the mortality rate for Hartlepool is 125, which indicates that it is higher than the National average and that people die younger. The National average obesity rate is 22.1% and Hartlepool is 23.9%. The cancer rates in Hartlepool are significantly higher than the national average.

In Hartlepool, in 2006, there were:

- 3,314 children with Special Educational Needs, 372 of these had statements
- 76 children in need of protection, including 2 unborn (0.5%)
- 118 looked after children (0.7%)
- 56 children first time offenders (0.4%)
- 4 children subject to an anti social behaviour order (0.03%)
- 10 children aged 0 – 15 years in road traffic accidents (killed or seriously injured) (0.06%)
- 126 teenage pregnancies (64.1 per 1000 females aged 15 – 17 in 2004) in comparison to the national average (42.1 per 1000)

There are six secondary schools, 30 primary schools, 1 nursery school and 2 special schools in Hartlepool catering for 1,278 nursery children, 7,962 primary pupils, 6,224 secondary pupils, 129 special school pupils and 71 pupils within the Access 2 Learning Centre.

This Strategy aims to raise the profile of play and to promote inclusive play opportunities across the statutory, private and voluntary and community sectors and to ensure that a collaborative approach is taken to enable children and young people access to freely chosen and safe play opportunities.

The Play Strategy will link into the aims and objectives of Hartlepool's Children and Young Peoples Plan. The development and implementation of the strategy is already featured within the Hartlepool's Children and Young People's Plan and although it is highlighted within the Enjoy and Achieve outcome it contributes to all five Every Child Matters outcomes.

The Play Strategy will also link to other policies, plans and strategies (Appendix 2). The recommendations within the action plan clearly define linkages to other strategies and plans across the authority and other agencies, showing a clear responsibility of others to work in partnership to meet the needs of children and young people and the wider community.

QUALITY

The report *Best Play* identifies the benefits of play and sets out criteria for excellence in play provision. Play facilities are excellent when they:

- Extend children's choice and control
- Recognise children's need to test boundaries
- Balance opportunities for risk – taking and prevention of serious harm
- Make many different kinds of play available
- Promote independence and self-esteem
- Promote social interaction and respect for others
- Promote children's creativity, physical, mental and emotional well-being and healthy growth

'Children of all ages play, but a great many children lack adequate or appropriate play opportunities. Children whose play opportunities are restricted or denied, for whatever reason, can suffer developmentally and the communities and families they live in are impoverished as a result.'

The Charter for Children's Play, 1998.

Increased investment in play and a growth of play provision will increase the demand for skilled and trained playworkers who understand the principles of play and playwork. Meeting this demand for qualified and trained people is critical to the success of quality play services.

As well as investing in developing a skilled workforce, it is important to ensure that the physical environment for play is also safe and stimulating.

Hartlepool Play Partnership is committed to ensure that all types of play provision meet relevant quality standards, which include:

- Fixed Play Equipment standards
- National Ofsted Standards
- Recognised Quality Assurance Schemes
- Investors in Children
- Best Play Key Objectives
- Play Workforce Standards

The development of rigorous criteria for the assessment of play opportunities is essential to enable organisations to develop high quality play provision. The Play Partnership will monitor and evaluate the development of the workforce and quality of play provision using the above standards.

Hartlepool Borough Council's Workforce Development Plan, clearly shows commitment to its workforce. The aims of the council are to be:

- An organisation where the citizen is at the centre of everything that we do
- A learning organisation which creates the best environment for our workforce to achieve successful outcomes for the people of Hartlepool
- An organisation that promotes a culture of learning where people value the citizen, the organisation, each other and themselves. Where everyone understands how their work makes a difference and helps commitment to higher standards.

The Play Strategy will support and assist the recruitment of good quality, skilled and experienced playworkers and play rangers by providing comprehensive training programmes in all areas of playwork including recruitment and retention.

RISK MANAGEMENT

Taking the Risk

Children learn about risk through play. It is an essential element of confidence building necessary for personal development and survival. Through their play children choose to encounter risk, learn to assess it and develop skills to manage it. Through trial and error they discover their own limitations and realise their potential for undertaking challenge. Children are inquisitive and curious with an innate and compelling drive to explore the unknown, experiment and test themselves.

Managing the Risk

Under the Health and Safety at Work Act 1974, employers must undertake regular Risk Assessments. A Risk Assessment is based on a holistic approach to assessing risk.

Those responsible for the regulation, inspection and implementation of Health and Safety are required to make appropriate judgements to the particular circumstance of the individual play provision.

Factors to be considered will include:

- Age and capability of children and young people using the provision or equipment
- The levels and type of accidents that have occurred in the past
- The level and amount of supervision that is available
- Risk Assessment can be a highly effective tool in supporting the development of quality play environments
- Specific play training is provided to support settings to enable them to conduct an effective risk assessment

The Play Safety Forum, a national body with government funding, was set up to consider issues, and its position statement *Managing Risk in Play* provides a helpful focus for discussion.

Managing Risk in Play

The Play Safety Forum 2002 set out in its document “Managing Risk in Play Provision” the key issues in relation to risk and play provision as highlighted below:

“There is growing concern about the how safety is being addressed in children’s play provision. Fear of litigation is leading many play providers to focus on minimising the risk of injury at the expense of other more fundamental objectives. The effect is to stop children from enjoying a healthy range of play opportunities, limiting their enjoyment and causing potentially damaging consequences for their development. This approach ignores clear evidence that playing in play provision is a comparatively low risk activity for children. Of the two million or so childhood accident cases treated by hospital each year, fewer than two percent involve playground equipment. Participation in sports like soccer, widely acknowledged as ‘good’ for a child’s development, involve a greater risk of injury than visiting a playground. Fatalities on playgrounds are very rare – about one per three or four years on average. This compares with, for instance, more than 100 child pedestrian fatalities a year and more than 500 child fatalities from accidents overall.”

Summary position statement

‘Children need and want to take risks when they play. Play provision aims to respond to those needs and wishes by offering children stimulating, challenging environments for exploring and developing their abilities. In doing this, play provision aims to manage the level of risk so that children are not exposed to unacceptable risk of death or serious injury.’

From Managing Risk in Play Provision, Play Safety Forum, 2002

The Play Partnership recognises the need to support providers in assessing risks and making considered judgements about the level of risk. This issue is addressed in the action plan attached to this document.

REVIEW OF COMMUNITY ENGAGEMENT

In the consultation for the development of this strategy, the Local Authority, together with voluntary and community groups engaged with children and young people in the following settings:

- Schools, including special schools
- Local Sure Start Programmes
- Voluntary and Community Groups
- New Deal for Communities (Challenge Funded Area)
- Youth Provision
- Children's Fund Participation
- Play Partnership
- National Play day

Information was also gathered from a range of Forums as follows:

- Local Neighbourhood Action Plans
- Children Centres and Extended Schools Strategy consultation
- Every Child Matters – The Big Plan
- Resident Groups
- Tell Us Questions – Joint Area Review
- Youth Matters consultation
- Children and Young People Participation Strategy

In total 870 people were engaged in consultation. The children and young people were aged 3 to 19 years and were from a range of backgrounds, including rural and town, different ethnic and religious backgrounds and disabled children and young people. A number of questions were asked which included:

- Where do you play?
- What do you think are the Barriers to Play?
- Where would you like to play?
- What would you like to see developed in Hartlepool?

The younger children expressed their thoughts through pictures and discussion with the assistance of childcare workers, playworkers and parents.

The Play Partnership have used the findings from the consultation to inform the development of the action plan. The findings from the consultation are set out in **Appendix 3 & 4**

The Play Partnership recognise that there are numerous ways of developing variety in play and recognise the importance of involving children and young people in the design and

operation of space. This will ensure that play provision is relevant to the children and young people's needs. Children and young people will also need to be involved in the monitoring and evaluating of play projects to ensure all provision is high quality.

Summary of Findings

A number of common issues were raised during the consultation. These issues were raised by both children and young people and parents. The issues are highlighted below.

Barriers to Play

- 70% of the people consulted had a fear of bullying, gangs, drug addicts and under age drinking in public spaces
- 60% of the people consulted felt there was a lack of safe play areas
- 80% felt that the cost of transport and lack of transport was a barrier to accessing play provision
- 75% felt there was little or no localised activities
- 90% felt that the cost was a barrier to access many activities
- 63% felt there was a lack of supervision of outdoor activities and play areas
- 57% felt there should be access to school grounds outside of school hours, including use of toilet and drinking water facilities

What would you like to see developed in Hartlepool?

- 57% wanted more access to school grounds outside of school hours
- 90% wanted access to more affordable activities
- 67% wanted access to a wide range of activities, including more challenging activities
- 85% would like to access free activities
- 75% wanted more localised provision
- 62% would like free transport to enable them to access activities and play areas outside of their own locality
- 63% stated they would like to have informal supervision in the way of a play ranger in parks and school grounds outside of school hours
- 68% stated they wanted better maintained fixed play facilities and open spaces, free from litter, dog dirt and drug paraphernalia
- 52% stated they would like to see more open access provision to enable them to come and go as they please
- 90% of the children and young people living in the rural areas would like to see play provision in the way of a mobile play service

AUDIT OF LOCAL PROVISION

A comprehensive audit of local provision has been carried out. This has been identified ward by ward to obtain a clear picture of gaps in provision (**appendix 5**)

It appears from the audit that there is a wide range of provision available in Hartlepool, but the audit does not highlight the quality, accessibility or affordability of the provision. In certain areas of the town there is little or no access to play provision to meet the needs of all children.

The audit of provision and consultation with children and young people have identified many areas of potential development and these have been used to inform the priorities set out in the action plan.

Hartlepool Borough Council manages 14 play areas across the town, with a playsite in Elwick Village, which is managed by Elwick Parish Council. While local authorities do not have a statutory duty to provide outdoor play facilities, they have a power to do so under the Local Government Act 1974. This allows for local authorities to provide facilities where it considers appropriate.

In terms of planning, there is a commitment to provide safe and convenient play space in the Hartlepool Local Plan 2001. In particular, it identifies a need for new housing developments to provide space for play or contribute towards the provision and maintenance of existing facilities.

The development of play facilities is also consistent with the Hartlepool Community Strategy, in so far as they contribute to wide range of good quality, affordable and accessible leisure and cultural opportunities, and with respect to teenage provision, provide diversionary activities which may reduce anti-social behaviour by young people.

The classification of play areas has been developed by the National Playing Fields Association (NPFA). The classification covers three areas which are detailed in the table below

National Playing Fields Association (NPFA) Classification:

LAP – Local Area for Play (target age range 4 - 6 years, max of 1 min walk time from home)

LEAP - Local Equipped Area for Play (target age range 4 - 8 years, max of 5 mins walk time, min of 5 types of play equipment)

NEAP - Neighbourhood Equipment Area for Play (target age range 8 - 14 years, max of 15 mins walk time, min of 8 types of play equipment)

The borough council have recently engaged consultants to undertake an assessment of its' open and green spaces which include parks, nature reserves, recreation grounds, as well as sports and recreation facilities. The aim of the assessment is for the council to plan positively, creatively and effectively to ensure there is adequate provision of accessible and high quality open and green spaces in Hartlepool. The assessment is currently underway and expected to be completed during 2007. This study will set out clear policy guidance for the authority when considering planning applications which involve the redevelopment of an existing open space or facility.

As part of this assessment all play areas will be assessed for both quality and accessibility in order to determine the need for development of new facilities, refurbishment of existing facilities or rationalisation of existing facilities.

Once this assessment has been undertaken, the information will be linked into the play strategy action plan.

Ward	Play Area (fixed Equipment)	NPF A Classification
Burn Valley	Burn Valley	LEAP
Rifthouse	Oxford Road	LEAP
Greatham	Great ham	LAP
Brus	King Oswy Drive	LEAP
Hart	Clavering	NEAP
Park	Ward Jackson Park	LEAP
Elwick Parish	Elwick (Parish Council)	LAP
Rossmere	Rossmere Park	NEAP
Rossmere	Jutland Road	LAP
St Hilda	Town Moor	LAP
Brus	King George V	LEAP
St Hilda	Block Sands	LAP
Seaton	Seaton Park	LEAP
Throston	Grayfields	LEAP
Park	Summerhill	NEAP

A number of maps can be found in appendix 7. These highlight the position of the following

- Playing fields
- Playgrounds
- Parks and Open Spaces
- Beaches and Nature Reserves

The maps are a useful tool in determining where current fixed play provision, open spaces etc are located to assist in the development of any new provision.

The Local Authority also provides a range of:

- Holiday play schemes
- National play day and events
- Grant funding to enable complementary services to be provided via the voluntary and community sector
- Organised play and sport activities within our own leisure facilities
- Out of school care and holiday playschemes, including breakfast clubs and out of school provision within schools

These services are funded through identified funding within the authority, together with subsidy from charges levied for certain activities.

OBJECTIVES

The strategy will deliver a set of objectives, which supports the five outcomes of Every Child Matters as defined in Hartlepool's Children and Young People's Plan.

The strategy will promote best practice using 'Best Play' Objectives, which is a widely recognised benchmark document describing the outcome objectives for play provision. The objectives that follow are broad statements that are intended to set out how the definition of play and the underpinning values and principles should be put into practice. They form the basis against which play provision can be evaluated.

- **'Extends the choice and control that children have over their play, the freedom they enjoy and the satisfaction they gain from it**
- **Recognises the child's need to test boundaries and respond positively to their need**
- **Manages the balance between the need to offer risk and the need to keep children safe from harm**
- **Maximises the range of play opportunities**
- **Fosters independence and healthy self-esteem**
- **Fosters the child's respect for others and offers opportunities for social integration**
- **Fosters the child's well-being, health, growth and development, knowledge and understanding, creativity and capacity to learn'**

Best Play – What play provision should do for children
NPFA/PLAYLINK/Children's Play Council
(2001)

The 'Best Play' Objectives listed above will be used to enhance the objectives set out in the action plan to ensure that every child has a right to play.

The seven objectives in the action plan are as follows:

Objective 1

Develop a Coordinated Approach to Play

Objective 2

Increasing Play Space/opportunities

Objective 3

Develop the Quality of Play Opportunities

Objective 4

To further Develop Processes that Facilitate the Participation of Children, Young People and Local Communities

Objective 5

Aim to Offer all Children and Young People the Opportunity to Experience Acceptable Risks in Play Environments

Objective 6

To Improve Safe Accessibility within Formal and Informal Play Settings

Objective 7

Funding and Sustainability of Play Provision

Appendix 1**PLAY PARTNERSHIP MEMBERS**

Danielle Swainston	Hartlepool Borough Council, Children's Services
Tracy Liveras	Hartlepool Borough Council, Children's Services
Kim Rowntree	Hartlepool Borough Council, Children's Services
Tracy Gowler	St Bega's School
Sharon Green	St Bega's School
Sue Lewins	Sure Start North Local Programme
Sara Berry	Rossmere Primary School
Linda Howlett	Hartlepool Families First
Rebecca Wise	West View Project
Debbie Bee	Hartlepool Youth Limited
Hazel Brunton	B76, Banardo's
Brian Robinson	Hartlepool Borough Council, Youth Service
Lindsay Rigby	Hartlepool, PATCH
Melanie Dunn	Hartlepool Special Needs Support Group
Tony Davis	Summerhill Visitor Centre
Gemma Clough	Hartlepool Borough Council, Regeneration & Planning
John Lauderdale	The Orb Centre, Oxford Road Baptist Church
Denise Sutton	Sure Start South Local Programme
Brieffni Winwood	St Hild's School
Ann Callaghan	Hartlepool Borough Council, Neighbourhood Services
Karen Harrison	Sure Start Central Local Programme
Kevin Cranney	Owton Fens Community Association
Lisa Varley	Rossmere School
Judith Hodgson	Hartlepool Borough Council, Children & Families
Linda Richardson	Kiddikins Childcare
Karen Leighton	West View Primary School
Catherine Fawcett	Manor West Project
John Reid	Manor West Project
Joanne Tilley	Hartlepool Young Carers
Amy Donnison	Hartlepool Young Carers
Bev Jones	Manor Residents Association
Kay Porritt	HY-PED
Albert Cope	Hartlepool Borough Council, Neighbourhood Services, Transport
Jim Turnbull	B76, Banardo's
Paul Jackson	Brierton Community School
Clare Anderson	CAMHS (Children Adolescent Mental Health Services)
Joan Wynn	Hartlepool Borough Council, Adult & Community Services
Rachel Williamson	North Tees Women's Aid
Julie Hall	Playmates Day Nursery
Beverly Hewitt	BEST Project, Kingsley Primary School
Gillian Hargin	Little People Day Nursery
David Frame	Hartlepool Borough Council, Neighbourhood Services
Mary Frain	St Cuthbert's Roman Catholic School
Julian Penton	New Deal for Communities
Gillian Slimings	Hartlepool Borough Council, Library Services
Wendy McLoughlin	Hartlepool Families First

Appendix 2

DRAFT

PLAY PARTNERSHIP TERMS OF REFERENCE

1. Purpose and Outcomes

The Partnership will oversee the development and implementation of the Play Strategy and consider all projects within the consortium bid for the BIG Lottery Funding. It will review and monitor the strategy and the grant funded projects.

In addition the Partnership aims to:

Improve opportunities for play and informal recreation.
Promote enjoyment for children and young people.
Promote equality and social inclusion.
Promote community use of schools.
Engage in partnerships with the voluntary sector, town and parish councils.

2. Functions and Remit

The partnership will operate in a review and monitoring role with regards to the Play Strategy and funded play projects. It will:

Monitor and review the process on the development of the Play Strategy.
Monitor and review the funded projects of BIG Lottery Fund.
Monitor and review the delivery of the funded BIG lottery projects.
Ensure services being delivered are based on local need.
Ensure services being delivered are based on value for money.
Make recommendations to the Children and Young Peoples Partnership.

3. Membership

The membership of the partnership will cover the interest of inclusive play development in Hartlepool. It will include:

Officers of the local authority

- Play Services
- Parks/ Green Spaces
- Planning & Regeneration
- Community and Youth
- Children's Services
- Highways
- Countryside

- Leisure
- Property Services
- Community Safety
- Neighbourhood Services
- Councillors – Play Champion
- Representation from schools
- Representation from childcare providers
- Representation Voluntary/Community Sector
- Housing & Housing Trusts
- Town & Parish Councils
- Police & Criminal Justice Agencies
- Environmental Agencies
- Private Sector Providers
- Relevant Regional Bodies
- Health

4. Principles

- The aims of the partnership are underpinned by the following principles:
- Every child and young person regardless of where they live have the opportunity to accessible and freely chosen play opportunities
- Every child and young person have the right to high quality and safe play opportunities that meet their needs

5. Decision making and risk management

- Nomination of a chair
- Nomination of vice chair
- Voting rights
- Chair and casting vote
- Role of substitute and co opted member

6. Developing capacity and capability

- Recruitment and induction
- Personal development statement
- Performance management

7. Engaging with stakeholders

- Accountability and relationships
- Statement needs to be added

In order to carry out the above functions the Partnership will:

- Nominate named substitutes to maximise representation at each meeting
- Hold partnership meetings on a quarterly basis
- Agree quarterly monitoring reports to be submitted to the Children & Young Peoples Partnership and BIG Lottery fund
- Set up time limited task groups to focus on specific areas of the strategy when required
- Adopt a formal complaints procedure

8. Operation of the partnership

The partnership will meet quarterly, more frequent in the early stages of the strategy as necessary. A report on progress will be prepared for each meeting and will be presented by a Senior Officer from the Children's Services Department.

In addition a number of task groups will be established to lead on certain areas of the strategy. These may include:

- Gathering evidence of consultation with children & Young People
- Mapping of current services and identifying gaps
- Assessment of all applications submitted for the consortium bid process

9. Dissolution of the partnership

The Partnership will be dissolved following notification from the Director of Children's Services and the Children's Trust that their role is no longer relevant or appropriate.

Appendix 3**LINKS TO STRATEGIES & LOCAL PLANS**

- Children and Young Peoples Plan
- Strategy and Action Plan for Children and Young People with Learning Difficulties and/or Disabilities 2007 – 2010
- Inclusion Framework for Local Authorities (Draft)
- Open Space & Leisure Facility Strategy (Draft)
- Culture, Recreation and Sports Strategy (see Pat Usher)
- Fixed Playground Strategy 2001
- Children's Centres and Extended Schools Strategy
- Neighbourhood Action Plans
- Joint Area Review
- Youth Service Plan
- Children's Fund Plan
- Local Transport Plan
- Sure Start Children's Centre Plan
- Connexions Local Delivery Plan
- Community Strategy (Culture and Leisure Theme)
- Local Area Agreement
- Children's Workforce Strategy
- Community Safety Strategy
- Hartlepool Housing Strategy
- Teenage Pregnancy Strategy
- Local Safeguarding Children Board Plan
- Safer Hartlepool Partnership – Crime, Disorder and Drugs Strategy
- Library Plan
- Performance and Achievement Delivery Plan
- Building Schools for the Future
- Every Child Matters
- Disability Discrimination Act 1995
- 10 Year Childcare Strategy
- Children Act 2006
- Time to Play (Department of Culture, Media & Sport)
- Every Disabled Child Matters
- Hartlepool Workforce Development Plan
- Children and Young People Participation Strategy (Draft)
- Parenting Strategy (Draft)

Appendix 4**CONSULTATION INFORMATION SOURCE**

- Belle Vue Sports Centre
- Lynnfield Fun 4 All Club
- Owton Fens Community Association
- Positive Future
- Oscars – Out of School Care
- Rossmere Neighbourhood Action plan
- Rift House Neighbourhood Action Plan
- Owton Neighbourhood Action Plan
- Dyke House, Grange and Stranton Neighbourhood Action Plan
- Barnard Grove School
- Barnardo's – Hartbeat
- Brinkburn Youth Centre
- Catcote School
- Cool Project – Golden Flatts School
- Dyke House Project
- English Martyrs and 6th Form College
- FAST Project
- Kingsley Primary School
- Manor College
- Rossmere Primary School
- Rossmere Youth Centre
- Sacred Heart RC Primary School
- St Bega's Primary School
- St John Vianney's Primary School
- St Teresa's R C Primary School
- West View Project
- Children's Centres and Extended
- North Hartlepool Neighbourhood Action Plan
- Hartlepool PATCH
- National Play Day
- Jesmond Road School
- West View Primary School
- Elwick Primary School
- St Cuthbert's Primary School
- Fens Primary School

APPENDIX 5**CHILDREN & YOUNG PEOPLE CONSULTATION FINDINGS****WHERE DO YOU PLAY?**

<ul style="list-style-type: none"> • After School Clubs and Activities • Athletics • Back Garden/At home • Basketball • Beach • BelleVue Centre • Block Sands Paddling Pool • Breakfast Club • Cinema • Clavering Swings • Dancing • Drama Club • Drifting about on the streets • Farm • Fishing • Friends House • Grayfields • Hang around town with friends • Holiday clubs/Playschemes • Home • Horse and Pets • Ice Hockey 	<ul style="list-style-type: none"> • Ice Skating • King Owsy Play Area • Library • Local Parks • Local Shops • Mill House Swimming Baths • On my bike • Open Fields • Open Grassed Areas • PATCH Groups • Play Groups • Rossmere Park • School Break times • School Field • Seaside Sammy's • Seaton Park • Sitting in abandoned factory with friends • Skate Park • Soft Play • Street • Summerhill Sure Start Activities within School • Swings 	<ul style="list-style-type: none"> • Trampolining at Mill House • Wacky Ware House • Ward Jackson Park • West View Project • With Friends
--	---	--

BARRIERS TO PLAY

<ul style="list-style-type: none"> • Access to Recreational Fields • Access to the Avondale Centre • Activities only offered to naughty children • Age Restriction • Baby Pool Too Cold • Being on your own • Broken Swings • Bullying • Cars • Cars parking on grassed areas • Changing Rooms dirty and need updating at Mill House • Children frightened of being robbed • Cost • Cross Ward Boundaries • Damaged toilets or no public facilities • Dog Dirt • Don't feel safe on the streets • Drug Addicts • Drugs in recreation grounds • Facilities too far away • Feeling Excluded • Gangs of Teenagers • 	<ul style="list-style-type: none"> • Glass • Ineffective Community Wardens • Lack of Street Lighting • Lack of Community Wardens • Lack of Facilities • Lack of Open Spaces • Lack of Play Equipment • Lack of promotion of activities on offer • Lack of Safe Play Areas • Lack of Security • Lack of Supervision or Organised Activity • Lack of Transport/Cost of Transport • Limited access to facilities due to age restriction • Litter • Needles • No one to take us to places • No Police presence • Older People • Overgrown Trees • Paedophiles • Parents • Parish Council – Kids views not taken into consideration • Racist Comments 	<ul style="list-style-type: none"> • Road Safety and Strangers • Signs – No Ball Games • Skate Board Park at Mill House, no security • Thugs • Timing of Activities • Too far to Walk • Toys burnt Out • Under age drinking in parks • Under utilised fields • Unfriendly Neighbours • Vandalism • Weather
---	---	--

WHERE WOULD YOU LIKE TO PLAY?

<ul style="list-style-type: none"> • Adventure Park • Assault Course • Back Alley • BMX Track • Brougham Annexe • Burn Valley • Camp Site • Childcare Club/Play Factory with activities • Clavering Play Area • Closer to Home • Closer to Resident Housing • Cool Club • Crazy and Mini Golf • Cricket Pitch • Cycle Tracks • Disco's • Dry Ski Slopes • Facilities for 10 - 18 Year Olds • Fairs • FAST Project • Fishing • Football and Sports • Free Activities on the beach • Free Choice of what I would like to do 	<ul style="list-style-type: none"> • Free Play Access • Garden Area on the Headland • Giant Swimming Pool • Grayfields • Ice Skating Rink • Improved Swimming Pod • In a Safe Environment • In a Safe Supervised Area • Indoor Games Room • Indoor place at the beach • Indoor Skate Board Park • Knock down old farm and replace with play area • Local Park • Maze • Mill House Leisure Centre • Mobile Bus for Rural Villages • More House with Gardens • More Play Equipment • Multi Purpose Built Centre • Nasir Mosque for Cultural Awareness • Open Spaces • Outdoor Swimming Pool • Park if in Working Order • Places to climb/Tree House • Play Areas instead of new houses 	<ul style="list-style-type: none"> • Playschemes during the School Holidays • Rock Climbing Rossmere Park • Sports Centre • Summerhill • Supervised Activities • Supervised Skate Park • Ten Pin Bowling • Tennis Courts • Theme Park built on wasteland • Trampolines • Use of School Facilities • Water Park • Youth Clubs • Youth Service Bus • Zoo
---	---	---

WHAT WOULD YOU LIKE TO SEE DEVELOPED IN HARTLEPOOL?

<ul style="list-style-type: none"> • Access to School Fields • Accessible opening times to activities • Activities where both young and adults can play together • Adventure Park • Affordable Activities • All Weather Football Pitch • Art/ Craft Centre • Better Maintained Play Equipment • Better Signage • Better use of Community Facilities • Bike Tracks • Child Representation on Parish Councils • Children's Allotments • Cleaner Parks and Toilets • Club House/Tree House • Community Farm • Coordinated Marketing of Activities • Covered Over Area with Seat (Bus stop design) • Cricket • Dance Studio • Develop Café 177 • Develop Jackson's Landing into a Play Resource • Double Decker Swing for 2 People 	<ul style="list-style-type: none"> • Facilities for Teenagers • Football and Tennis • Free Activities • Free Bus and Train Passes • Free phone to report play crimes and vandalism to community buildings • Goal Posts • Good Kid Reward Scheme • Good Quality Resources • Gymnastics • Horse Riding • Ice Rink • ID Cards • Improved Leisure Centres • Increased Police Presence • Increased security/ CCTV • Increased Street Lighting • Indoor Music Centre • Less adult input • Maze at Summerhill • Mobile Provision • Modern Buildings • More accessible activities • More Activities at Summerhill • More After School Clubs • More Animals • More Community Wardens 	<ul style="list-style-type: none"> • More Areas for Children to Play • More Litter Bins • More Open Space • More organised activities • More Play Areas • More Public Toilets /access to school facilities • More resources for 16+ • More Skate Board Park • More Slides • More Swings • New Leisure Centre • Open Access • Outdoor Motorbike Track • Paintballing • Places to meet up with friends • Play Activities in School • Play Area on the Fens • Play Rangers • Playgroups • Playschemes • Provision Closer to Home • Reduce speed limit on the roads • Rent a Bike Scheme
---	---	---

WHAT WOULD YOU LIKE TO SEE DEVELOPED IN HARTLEPOOL?

<p>Continued: -</p> <ul style="list-style-type: none"> • Regular Bus Service – Evenings • Safe Enclosed Swings • Safer Parks • Sand Pit • Saturday Club • Soft Play Area • Sports Centre • Sports Clubs • Sports/Play Coaches and experienced Specialist Workers • Supervised Activities • Supervised areas for Teenagers Only • Supervision in Parks • Supported/Mixed activities for vulnerable young people • Swimming Pool with Supervision • Teenage Area in the Shopping Centre • The local authority to listen more • Theme Park • Trampolining • Transport to Summerhill • Water Park • Weekend and Holiday Activities 	<ul style="list-style-type: none"> • Wide range of both indoor and outdoor facilities • Wooden House • Youth Clubs for All Ages • Youth Disco's 	
---	---	--

Appendix 6

AUDIT OF PROVISION BY WARD**BRUS**

- St Hilda's School C of E VA Secondary School
Breakfast Club
Wide Range of After School Activities
- St John Vianney R.C. Primary School – Children's Centre
Breakfast Club
Out of School Club
Holiday Care
Wraparound Care
Full Day Care
- West View Primary School
Breakfast Club
Out of School Club
Wraparound Care
Sports Academy
- Hartlepool RFC – Mayfield Park
- P.A.T.C.H.
- Tweeny Tots Parent & Toddler Group
- West View Baptist Church – Parent & Toddler Group
- Rainbow Day Nursery
- Sure Start North Annexe
- West View Community Centre
- West View Library
- West View Project

- Fast Programme
- Brus Play Area with Fixed Play Equipment
- King George V Playing Field with Fixed Play Equipment

BURN VALLEY (BRINKBURN)

- Eldon Grove Primary School - Kiddi kins Day Care
Out of School
Holiday Care
- Salvation Army Parent & Toddler Group
- Hartlepool Special Needs Support Group
- Hartlepool Deaf Centre
- Burn Valley Gardens
Fixed Play Equipment
Friends of Burn Valley

DYKE HOUSE

- Dyke House School – Fully Extended
Fast Project
Football
Sports Health Education
- Avondale Centre
- P.A.T.C.H.
- Sure Start Central – Stay & Play

DYKE HOUSE continued

- Brougham Primary School
Out of School Club
Breakfast Club
- Brougham Centre – Sure Start Courses
Gurgle & Play
Hooray For Play
- Wharton Annexe
Hollis Academy of Dance
Mobile Work Unit
Lunch & Play
Dyke House Project
CAT Young Movers
Fast Project
Library Service
- Sure Start – Chatham House
Full Day Care
Drop In & Play
Grubs & Grownups
- Hartbeat / Barnardos
- Nasir Mosque
- Football In The Community
- Mobile Youth Work Teams
- Fast Project

- Cornerstone Youth House
CAT Young Movers
Fast Project

FENS

- Fens Primary School - Breakfast Club

FOGGY FURZE

- Stranton Primary School
Breakfast Club
Out of School Club
- Stranton Centre
Holiday Care
N.D.C. Projects
Cool Projects
- St Cuthbert's R.C. Primary School – Breakfast Club
- St Aidan's Primary School – Out of School Club
- Library
- Belle Vue Community, Sport & Youth Centre
- P.A.T.C.H
- Hartlepool Families First – Town wide Service
- Oxford Road Baptist Church Hall
Parent & Toddler Group
Youth Projects

FOGGY FURZE continued

- ST Aidan's Scout Group
- Footlight Theatre Group
- Junior Bowling Club
- Tennis Courts

GRANGE (JACKSON)

- Lynnfield Primary School
Out of School Club
Breakfast Club
- Lynnfield Centre – Sure Start Courses
Gurgle & Play
Hooray For Play
Drop In & Play
- Lynnfield Centre
Cool Project
N.D.C. Project
- Lonsdale Day Nursery – Full Day Care
- Playmates – Full Day Care
- Salaam Centre
- P.A.T.C.H.
- Oz Centre – P.A.T.C.H.
- Mobile Youth Teams

- Lynnfield Play Area
- Grange Road Methodist Church Hall
Out of School Club
Holiday Club

Smart Club (BME)

GREATHAM

- Greatham Community Hall
- Greatham Playscheme
- Parent & Toddler Group
- Greatham Play Area & Fixed Play Equipment
- Open Space

OWTON

- Grange Primary School
Out of School Club
Breakfast Club
- Owton Manor Primary School
Out of School Club
Breakfast Club
- Manor College Of Technology
Out of School
Breakfast Club

OWTON continued

- Owton Manor Community Centre
- Oscar II – Owton Manor Community Centre
 - Out of School Club
 - Owton Manor Library
- Manor Residents Association
 - Holiday Club
 - Out of School Club
 - Breakfast Club
 - Full Day Care
- Owton Fens Community Association
- Owton Rossmere Resource Centre
- Football In The Community
- Cool Project
- Fast Project
- Mobile Youth Provision
- Owton Manor Baptist Church
 - Solid rock Project via Connexions
- Scallywags Play Group
- P.A.T.C.H.

PARK

- High Tunstall College of Science
 - Sports Centre
 - Breakfast Club
 - Hartlepool Special Needs Support Group Playscheme
- Alderside – Full Day Care
- Summerhill Visitor Centre
- Southbrooke Stables
- Burn Road Harriers
- St Luke's Centre – Parent & Toddler Group
- Tunstall Avenue Play Group
- Ward Jackson Park & Fixed Play Equipment
- Hartlepool Cricket Club

RIFT HOUSE

- English Martyrs RC School & 6th Form College
 - All Weather Sports Pitch
- Catcote School
- Rift House Primary School
 - Breakfast Club
 - Out of School Club
 - Cool Project
- Kingsley Primary School
 - Breakfast Club
 - Out of School Club

RIFT HOUSE continued

- Brierton Community School – Breakfast Club
- Access To Learning – Breakfast Club
- Brierton Sports Centre
- N>D.N.A. Day Nursery – Full Day Care
- Manor West – Connexions
- Fast Project
- Straight Line Project

- Browning Avenue Baptist Church
 - Parent & Toddler Group
 - Youth Activities
 - Twins Club

- Brinkburn Youth Centre
- Mobile Library Service
- Oxford Road – Fixed Play Equipment
- Football In The Community
- Small Play Area
- Recreation Ground
- West Hartlepool RFC

ROSSMERE

- Rossmere Primary School – Children's Centre
 - Breakfast Club
 - Out of School Club

- St Teresa's R.C. Primary School – Children's Centre
 - Breakfast Club
 - Out of School Club

- Golden Flatts Primary School
 - P.A.T.C.H.
 - Cool Project
 - Football
 - Cricket
 - Range of Sports

- Rossmere Youth Centre

- Sure Start South Centre – Children's Centre
 - Full Day Care

- Sure Start South Link Centre
- Families Matter – Holiday Care
- Rossmere Playscheme
- St Teresa's Church Hall – Parent & Toddler Group
- St James Church Hall
- Scouts Centre
- Jutland Road Community Centre
- Jutland Road Play Area & Fixed Play Equipment
- Rossmere Park & Fixed Play Equipment

ROSSMERE continued

- Friends of Rossmere Park
- Fast Project
- M.A.C.S
- Mr Twisters
- Hollywood Bowl

SEATON

- Holy Trinity C of E Primary School – Out of School Club
- Scallywags – Full Day Care
- Seaton Carew Nursery School
- Seaton Library
- Seaton Park – Fixed Play Equipment
- Beach
- Arcades

ST HILDA

- St Bega's R.C. Primary School
Out of School Club
Breakfast Club
Wraparound Club
Holiday Club
- St Helen's Primary School
Out of School Club
Breakfast Club

- Sure Start North Centre
Full Day Care
Play Groups

- Kiddikins\Neighbourhood Centre – Full Day Care
- Horsley Buildings
- Abbey Street Project – Headland Future Ltd
- Active 8 Centre
- Borough Buildings & Sports Centre
- P.A.T.C.H.
- Headland Playscheme
- Fast Programme
- Headland Development Trust
- Carnegie Buildings – Sports Development
- Busy Bees Fun Club
- Playground
- Town Moor & Fixed Play Equipment
- Hartlepool Rovers Rugby Ground
- Northgate Library
- Block Sands (Paddling Pool)

STRANTON

- St Joseph's R.C. Primary School
Breakfast Club
Out of School Club
- Ward Jackson Primary School
Breakfast Club
Lunch & Play

STRANTON continued

- Hartlepool Peoples Centre
Out of School Club
Holiday Care
Advance
- Mill House Leisure Centre
Mobile Youth Service
Gym Tots
Swimming
Range of Activities
- Bridge Community Centre
Youth Club
Holiday Scheme
- Little People Day Nursery – Full Day Care
- Burbank Community House
- Burbank Community Gardens
- Hartlepool Carers
- Café 177
- Central Library
- H.V.D.A.
- N.D.C.
- Respect
- Westbourne Methodist Church Hall
- Footprints Day Nursery – Full Day Care

- P.A.T.C.H
- Mobile Youth Work Teams
- H.U.F.C. – Safer In Soccer Scheme
- Christ Church – Mobile Youth Bus

THROSTON

- Throston Primary School – Breakfast Club
- Jesmond Road Primary School – Breakfast Club
- Oscar III – Jesmond Road Primary School
Out of School Club
Holiday Care
- Sacred Heart Primary School
Breakfast Club
- Sacred Heart Primary School – Kiddi kins Childcare
Out of School Club
- Springwell School – Parent & Toddler Group
- Boys Welfare Youth Club
- Oscar I – Boys Welfare Youth Club
Out of School Club
Holiday Care

THROSTON continued

- P.A.T.C.H
- W.H.T.D.S.O.B Rugby Club
- Throston Grange Community Centre
- Throston Library
- Throston Grange Residents Association

- Grayfields
Sports Centre
Fixed Play Equipment

HART

- Clavering Primary School
Out of School Club
Breakfast Club

- Barnard Grove Primary School – Breakfast Club
- Hart Primary School
- St Marks Church Hall
- St Marks Play Group
- Hart Village Hall
- Mary Magdalene Parent & Toddler Group

ELWICK

- Elwick School
- Parent & Baby Group
- Community Hall
- Adventure Play Area & Fixed Play Equipment
- Small Sports Field – owned by Parish Council

Appendix 8

REFERENCES

Articles 31 & 23 United Nations Convention 1989– Rights of the Child

David Lloyd George 1925 – ‘The right to play is a child’s first claim on the community’

Hartlepool Borough Council- Children and Young Peoples Plan

Children’s Play Council - Planning for Play March 2004

Children’s Play Council - Planning for Play 2006

Department for Culture, Media and Sport – ‘Time for Play’ August 2006

Department for Culture, Media and Sport - Getting Serious about Play, 2004

Every Child Matters (outcomes framework) next steps 2004

Children’s Play Council - Best Play

Ten Year Childcare Strategy ‘A choice for parents, the best start for children’ – December 2004

Joint Area Review Report – Hartlepool Borough Council’s Children’s Services Department

Hartlepool Borough Council- Performance Management School Data Information

Tees Valley Joint Strategy Unit – Population & Household Projections for Hartlepool 2003 – 2021

Hartlepool Borough Council – Corporate Strategy Document

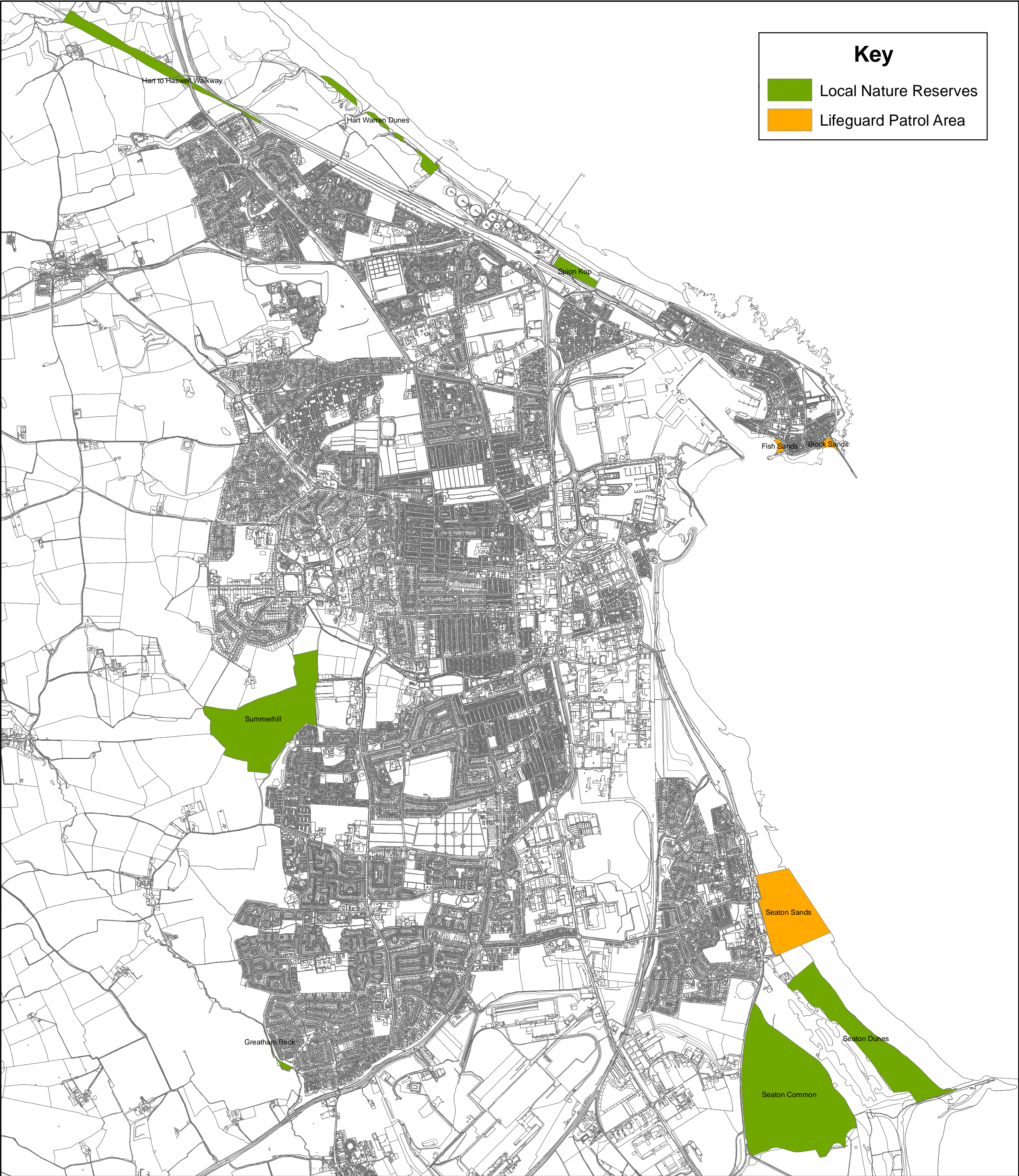
The Charter for Children’s Play, 1998

Health & Safety at Work Act 1974

Play Safety Forum - Managing Risk in Play Provision, 2002

National Playing Fields Association – Play Area Classifications

LNR's andf Beach Patrolled Areas



This map is reproduced from Ordnance Survey material with the permission of Ordnance Survey on behalf of the controller of Her Majesty's office © Crown copyright. Unauthorised reproduction infringes Crown copyright and may lead to prosecution or civil proceedings. Hartlepool.B.C. LA09057L 1999

Sub Title: LNRs & Beaches
Scale: 1:21,000
Date: 30th January 2007
Drawn By: Parks & Countryside BU

Hartlepool Borough Council
Parks and Countryside
Suite 8, Municipal Buildings
Church Square
Hartlepool, TS24 7EQ
Tel: 01429 523524
Fax: 01429 523450