

PLEASE NOTE VENUE

CENTRAL NEIGHBOURHOOD CONSULTATIVE FORUM AGENDA



Thursday 29th November 2007

at 10.00 am

**in the Town Hall, Raby Road, Hartlepool
(main Theatre entrance)**

MEMBERS: CENTRAL NEIGHBOURHOOD CONSULTATIVE FORUM:

Councillors Akers-Belcher, Brash, Coward, Cranney, Hall, Hargreaves, Henery, Kaiser, Laffey, Lauderdale, London, Morris, Payne, Richardson, Shaw, Simmons, Sutheran, Tumilty and Worthy

Resident Representatives:

James Atkinson, Bob Farrow, Alan Greenwell, Ted Jackson, Jean Kennedy, Evelyn Leck, Alan Lloyd, Brenda Loynes, Sarah Maness and Brian McBean

- 1. WELCOME AND INTRODUCTIONS**
- 2. APOLOGIES FOR ABSENCE**
- 3. TO RECEIVE ANY DECLARATIONS OF INTEREST BY MEMBERS**
- 4. MINUTES**
 - 4.1 To confirm the minutes of the meeting held on 11th October 2007 (*attached*)
 - 4.2 Matters arising (maximum of 10 minutes) – Feedback sheet from last meeting attached.

PLEASE NOTE VENUE

5. **PUBLIC QUESTION TIME and WARD ISSUES (maximum of 30 minutes)**

Foggy Furze
Grange
Park
Rift House
Stranton
Burn Valley
Elwick

6. **ITEMS FOR CONSULTATION**

6.1 Dog Control Orders – *Head of Neighbourhood Management*

7. **ITEMS FOR DISCUSSION and/or INFORMATION**

7.1 Presentation – LINKs (Local Involvement Networks) – *Development Officer*
7.2 The Future Town Planning of Hartlepool – Core Strategy Issues and Options
Discussion Paper Consultation – *Director of Regeneration and Planning Services*
7.3 Presentation – Pride in Hartlepool – *Pride in Hartlepool Officer*

8. **ITEMS FOR DECISION**

8.1 Minor Works Report – *Neighbourhood Co-ordinator*

9. **DATE, TIME AND VENUE OF NEXT MEETING**

The next meeting of the Central Area Police and Community Safety Consultative Forum will be held on Thursday 10th January 2008 commencing at 10am, in the Baltic Suite, Hartlepool Historic Quay, Maritime Avenue, Hartlepool

The next meeting of the Central Neighbourhood Consultative Forum will be held on Thursday 31st January 2008 commencing at 10am, in the Sir William Gray Suite, Hartlepool Historic Quay, Maritime Avenue, Hartlepool

10. **ANY OTHER BUSINESS AGREED BY THE CHAIR**

Report of: Head of Neighbourhood Management

Subject: Dog Control Orders

1. Purpose of Report

- 1.1 To provide concise details of the proposed Dog Control Orders for consultation.

2. Current Situation

- 2.1 The Council has a number of byelaws relating to dogs that were introduced to protect the general public. These byelaws consist of the following, and are stringently enforced by the Council's Neighbourhood Action Team:
- (i) Dogs on leads in Ward Jackson Park, Burn Valley Gardens, Rossmere Park, Seaton Park.
 - (ii) Dogs on leads in Stranton Cemetery and West View Cemetery.
 - (iii) Seasonal ban of dogs on the seashore and corresponding promenades at Seaton Carew, Headland Fish Sands, Headland Block Sands.
- 2.2 The Dogs(Fouling of Land)Act 1996 is used by the Council's Neighbourhood Action Team to reprimand irresponsible dog owners who fail to remove dog faeces forthwith.
- 2.3 With few exceptions, the Dogs (Fouling of Land) Act 1996 applies to any land, which is open to the air and to which the public are entitled or permitted to have access (with or without payment).
- 2.4 Failure to remove dog faeces forthwith is an offence under the Dogs(Fouling of Land)Act 1996 and subject to a maximum fine of level 3 on the standard scale (currently £1,000).
- 2.5 Offenders are able to discharge liability for conviction through payment of a Fixed Penalty Notice of £50.

3. Dog Control Orders

- 3.1 In April of 2006, the Clean Neighbourhoods and Environment Act was fully introduced and provided local authorities with a range of new powers to tackle problems in the environment.

- 3.2 Part 6 of the Clean Neighbourhoods and Environment Act 2005 enables local authorities to make dog control orders, which effectively replace the previous system of dog byelaws for the control of dogs, and also the Dogs (Fouling of Land) Act 1996.
- 3.3 Existing byelaws remain in force indefinitely and can continue to be enforced as normal. However, if an authority makes a Dog Control Order in respect of an offence on a specified area of land, any existing byelaw dealing with the same offence on the same land lapses.
- 3.4 A Dog Control Order can be made in respect of any land, which is open to the air and to which the public are entitled or permitted to have access (with or without payment).
- 3.5 Although the Dogs (Fouling of Land) Act 1996 has been repealed, the Order commencing the repeal provision preserves the offence under the 1996 Act in respect of any designation orders made prior to the repeal. Therefore, any orders made under the 1996 Act will continue to have effect, and enforcement through fixed penalty notices (fixed at £50) and prosecution can continue.
- 3.6 The Dogs (Fouling of Land) Act 1996 will cease to have effect only when a Dog Control Order is fully introduced by an authority.
- 3.7 The Dog Control Orders Regulations provide for five offences which may be prescribed in a dog control order:
- (a) failing to remove dog faeces;
 - (b) not keeping a dog on a lead;
 - (c) not putting, and keeping a dog on a lead when directed to do so by an authorised officer;
 - (d) permitting a dog to enter land from which dogs are excluded;
 - (e) taking more than the specified number of dogs onto land.
- 3.8 The penalty for committing an offence under a Dog Control Order is a maximum fine of level 3 on the standard scale (currently £1,000). Alternatively, the opportunity to pay a fixed penalty may be offered in place of prosecution.
- 3.9 The local authority is able to set the amount of fixed penalty payable.
- 3.10 If no amount is set, then the amount payable is £75.
- 3.11 An authority may make provision for treating the fixed penalty as having been paid if a lesser amount is paid before the end of a period specified by the authority.
- 4. Exemptions**
- 4.1 Dog Control Orders provide exemptions in particular cases for registered blind people, and for deaf people, and for other people with disabilities who make use of trained assistance dogs.

5. Consultation

- 5.1 Dog Control Orders under Part 6 of the Clean Neighbourhoods and Environment Act 2005 are a welcome new addition to the powers available to the Council as it endeavours to provide a safe and clean environment for the people of Hartlepool.
- 5.2 The effective implementation of these new powers is essential and the Council must consider them fundamental to its key aims and objectives.
- 5.3 Initial public consultations on Dog Control Orders have been carried out through press articles, attendance at Resident Associations and Groups, Neighbourhood Consultative Forums, the Environmental Theme Partnership, Parish Council meetings and the Council's website. Members of the public have been encouraged to make comments, suggestions or to ask questions about the proposed Dog Control Orders.

6. Draft Proposals

- 6.1 Following initial consultations, details of the areas affected by the proposed Dog Control Orders are attached as follows:

Appendix A

- (i) Failing to Remove Dog Faeces.
- (ii) Not Putting, and Keeping a Dog on a Lead when Directed to do so by an Authorised Officer.
- (iii) Taking More than the Specified Number of Dogs onto Land.

Appendix B

- (i) Not Keeping a Dog on a Lead.

Appendix C

- (i) Permitting a Dog to Enter Land from which Dogs are Excluded.

- 6.2 Areas where dogs shall be permitted to exercise freely are detailed at Appendix D; however, an Authorised Officer shall retain the power to direct a person to put, and keep a dog on a lead.

The list of areas at Appendix D is not exhaustive, but indicative in its nature.

- 6.3 The Council is proposing to set the level of fixed penalty payable for committing an offence under a Dog Control Order at £100.
- 6.4 The fixed penalty will be subject to a discount of £40 if paid within a period of 7 days from the date of issue.

7. Timetable for implementation

- 7.1 Prior to the introduction of Dog Control Orders, the Council will publish a notice describing the proposed Orders in a local newspaper circulating in the same area as the land to which the orders will apply and invite representations on the proposals.

- 7.2 At the end of the consultation period the authority will consider any representations that have been made. If it then decides to proceed with the orders, it must decide when the order will come into force.
- 7.3 Subject to further public consultation, it is envisaged that any Dog Control Orders will formally come into force on 1st April 2008.

8. Recommendations

- 8.1 Members of the public are asked to consider the proposals to introduce Dog Control Orders and to make comments or suggestions.

Contact Officer:

Craig Thelwell
Neighbourhood Action Manager
1 Church St
Hartlepool
TS24 7DS

Tel: 01429 523370
E-mail: craig.thelwell@hartlepool.gov.uk

APPENDIX C

Title of Dog Control Order(s):

- PERMITTING A DOG TO ENTER LAND FROM WHICH DOGS ARE EXCLUDED

Land subject to Dog Control Order(s):

- SEATON CAREW BEACH - Seasonal May to September inc. (see map C1)
- HEADLAND FISH SANDS - Seasonal May to September inc. (see map C2)
- HEADLAND BLOCK SANDS – Seasonal May to September inc. (see map C3)
- BURBANK COMMUNITY GARDEN (see map C4)
- SEATON PADDLING POOL (see map C5)
- LOWER PROMENADE PADDLING POOL, HEADLAND (see map C6)
- MILL HOUSE SKATE PARK (see map C7)
- SUMMERHILL VISITOR CENTRE FIELD STUDY AREA (see map C8)
- ALL SPORTS PITCHES (e.g. football, rugby, hockey, cricket and athletics) at the following locations:

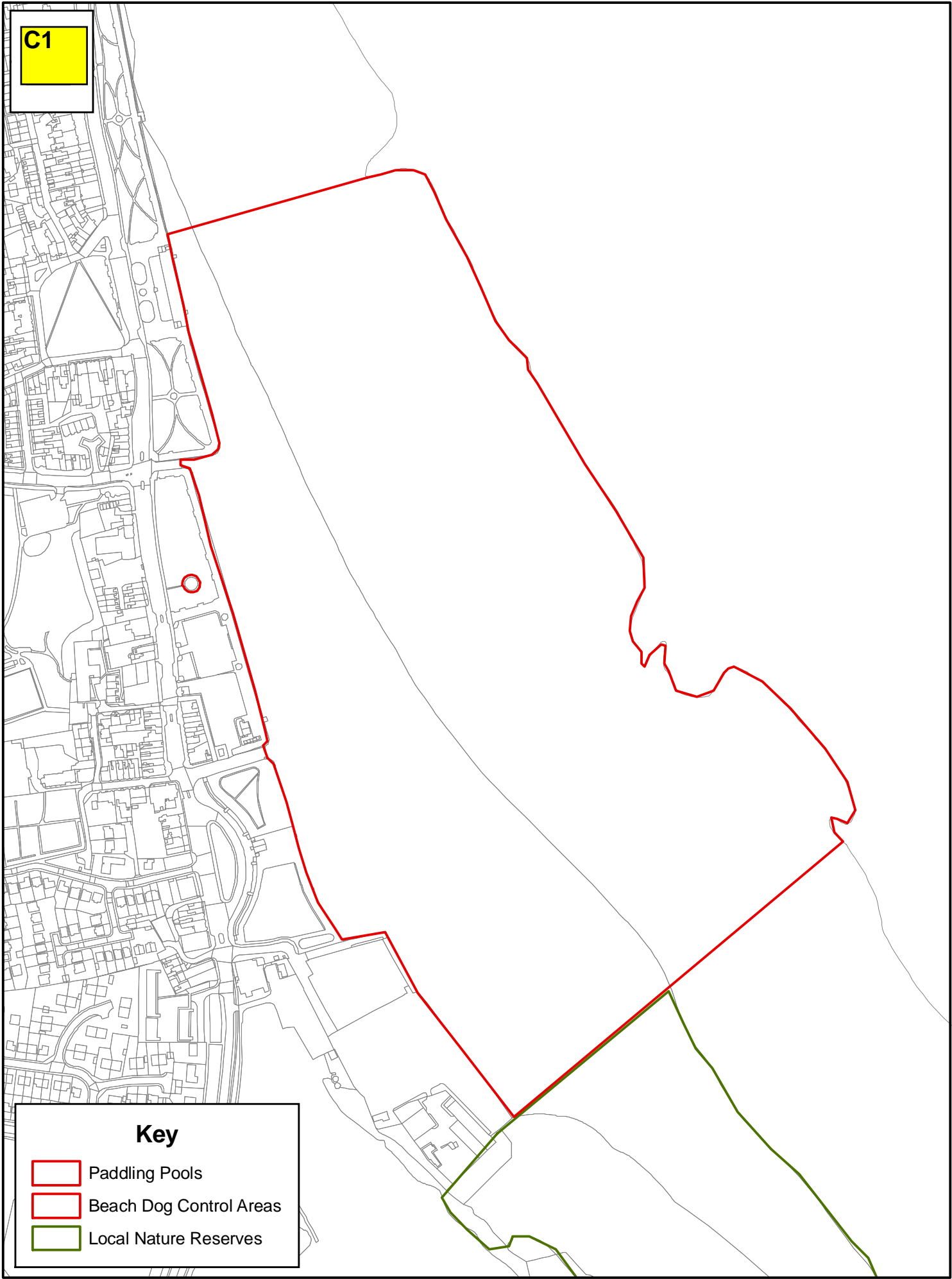
RIFT HOUSE REC.
GRAYFIELDS REC.
SEATON REC.
KING GEORGE V PLAYING FIELD
HARTLEPOOL 6TH FORM COLLEGE
GREATHAM SPORTS FIELD

- ALL PLAY GROUNDS at the following locations:

CLAVERING (see map C9)
WARD JACKSON PARK (see map C10)
TOWN MOOR REC. (see map C11)
ROSSMERE PARK (see map C12)
BURN VALLEY GARDENS (see map C13)
SUMMERHILL VISTOR CENTRE (see map C14)
HEADLAND LOWER PROMENADE (see map C15)
KING GEORGE V PLAYING FIELD (see map C16)
GRAYFIELDS REC. (see map C17)
SEATON PARK (see map C18)
OXFORD RD (see map C19)
KING OSWY DRIVE (see map C20)
JUTLAND RD (see map C21)
GREATHAM VILLAGE (see map C22)

Seaton Park and Recreation Areas

C1



Key



Paddling Pools



Beach Dog Control Areas



Local Nature Reserves



This map is reproduced from Ordnance Survey material with the permission of Ordnance Survey on behalf of the controller of Her Majesty's office © Crown copyright. Unauthorised reproduction infringes Crown copyright and may lead to prosecution or civil proceedings. Hartlepool.B.C. LA09057L 1999

Sub Title: Dog Control Order Areas
Scale: 1:4,500
Date: 9th November 2007
Drawn By: Parks & Countryside BU

Hartlepool Borough Council
Adult & Community Services Department
Parks and Countryside
Suite 8, Municipal Buildings
Church Square
Hartlepool, TS24 7EQ
Tel: 01429 523524
Fax: 01429 523450

Fish Sands

C2

Key

 Beach Dog Control Areas



This map is reproduced from Ordnance Survey material with the permission of Ordnance Survey on behalf of the controller of Her Majesty's office © Crown copyright. Unauthorised reproduction infringes Crown copyright and may lead to prosecution or civil proceedings. Hartlepool.B.C. LA09057L 1999

Sub Title: Dog Control Order Areas

Scale: 1:1,500

Date: 9th November 2007

Drawn By: Parks and Countryside BU



Hartlepool Borough Council
Adult and Community Services Department
Parks and Countryside
Suite 8, Municipal Buildings
Church Square
Hartlepool, TS24 7EQ

Tel: 01429 523524
Fax: 01429 523450

Block Sands

C3

Key

-  Play Areas
-  Beach Dog Control Areas



This map is reproduced from Ordnance Survey material with the permission of Ordnance Survey on behalf of the controller of Her Majesty's office © Crown copyright. Unauthorised reproduction infringes Crown copyright and may lead to prosecution or civil proceedings. Hartlepool.B.C. LA09057L 1999

Sub Title: Dog Control Order Areas
Scale: 1:1,500
Date: 9th November 2007
Drawn By: Parks and Countryside BU

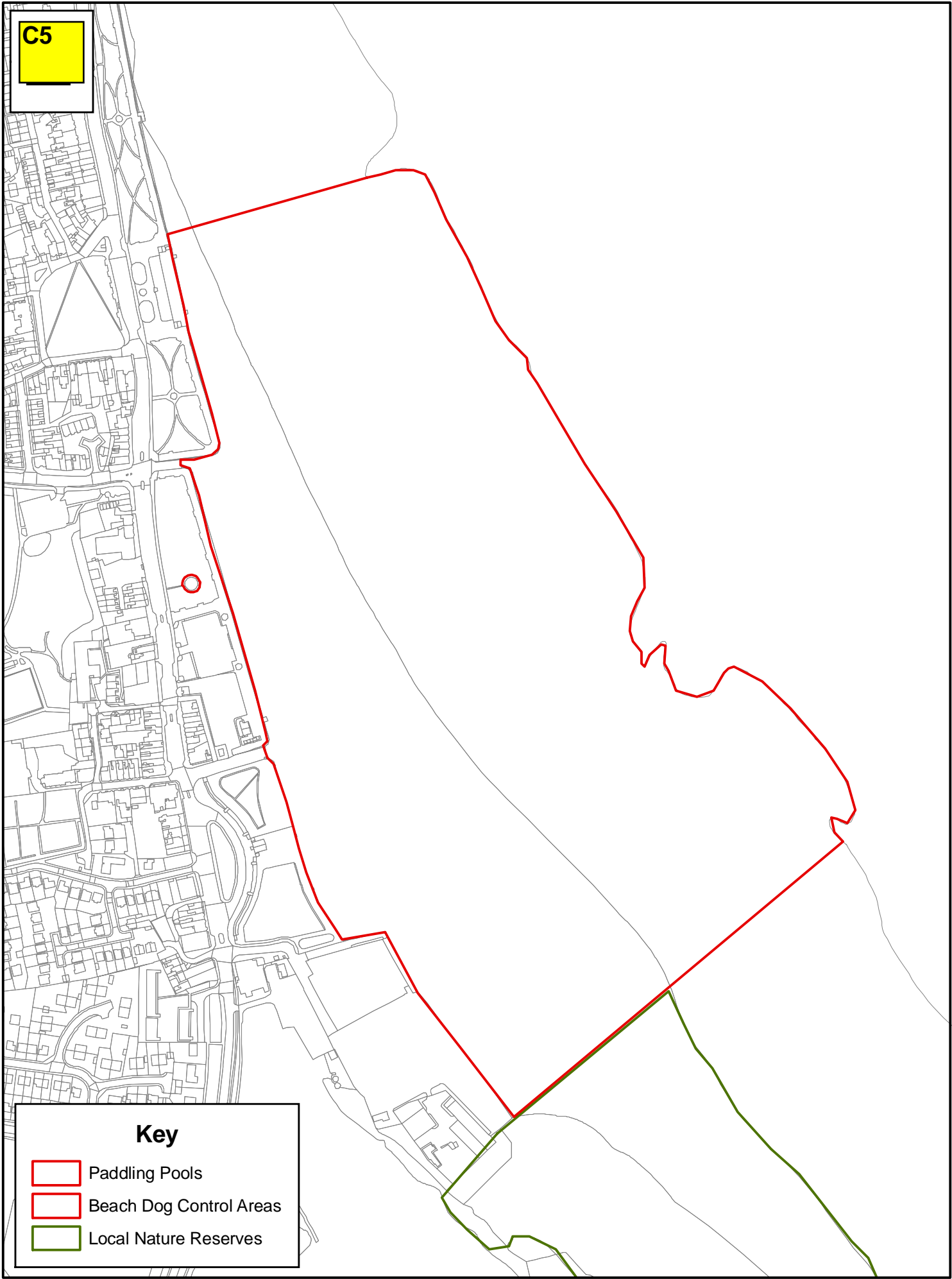
Hartlepool Borough Council
Adult and Community Services Department
Parks and Countryside
Suite 8, Municipal Buildings
Church Square
Hartlepool, TS24 7EQ
Tel: 01429 523524
Fax: 01429 523450

The map shows a large rectangular plot outlined in red, situated in the Redworth area. The plot is bounded by Freville Street to the north, Redworth Street to the west, and Bertha Street to the south. The map includes various landmarks such as the Youth Centre, Depot, Warehouse, and Works. It also shows the locations of several bus stops, including Standrop Street, Uzzard Walk, and Spurn Walk. The map is labeled with street names, building numbers, and distances between key points.

C4

Seaton Park and Recreation Areas

C5



Key



Paddling Pools



Beach Dog Control Areas



Local Nature Reserves



This map is reproduced from Ordnance Survey material with the permission of Ordnance Survey on behalf of the controller of Her Majesty's office © Crown copyright. Unauthorised reproduction infringes Crown copyright and may lead to prosecution or civil proceedings. Hartlepool.B.C. LA09057L 1999



Sub Title: Dog Control Order Areas
Scale: 1:4,500
Date: 9th November 2007
Drawn By: Parks & Countryside BU

Hartlepool Borough Council
Adult & Community Services Department
Parks and Countryside
Suite 8, Municipal Buildings
Church Square
Hartlepool, TS24 7EQ
Tel: 01429 523524
Fax: 01429 523450

Block Sands

C6

Key

-  Play Areas
-  Beach Dog Control Areas



This map is reproduced from Ordnance Survey material with the permission of Ordnance Survey on behalf of the controller of Her Majesty's office © Crown copyright. Unauthorised reproduction infringes Crown copyright and may lead to prosecution or civil proceedings. Hartlepool.B.C. LA09057L 1999

Sub Title: Dog Control Order Areas
Scale: 1:1,500
Date: 9th November 2007
Drawn By: Parks and Countryside BU

Hartlepool Borough Council
Adult and Community Services Department
Parks and Countryside
Suite 8, Municipal Buildings
Church Square
Hartlepool, TS24 7EQ
Tel: 01429 523524
Fax: 01429 523450

Mill House Skate Park

C7

Key

 Play Areas



This map is reproduced from Ordnance Survey material with the permission of Ordnance Survey on behalf of the controller of Her Majesty's office © Crown copyright. Unauthorised reproduction infringes Crown copyright and may lead to prosecution or civil proceedings. Hartlepool.B.C. LA09057L 1999

Sub Title: Dog Control Order Areas

Scale: 1:1,500

Date: 9th November 2007

Drawn By: Parks and Countryside BU




Hartlepool Borough Council
Adult and Community Services Department
Parks and Countryside
Suite 8, Municipal Buildings
Church Square
Hartlepool, TS24 7EQ

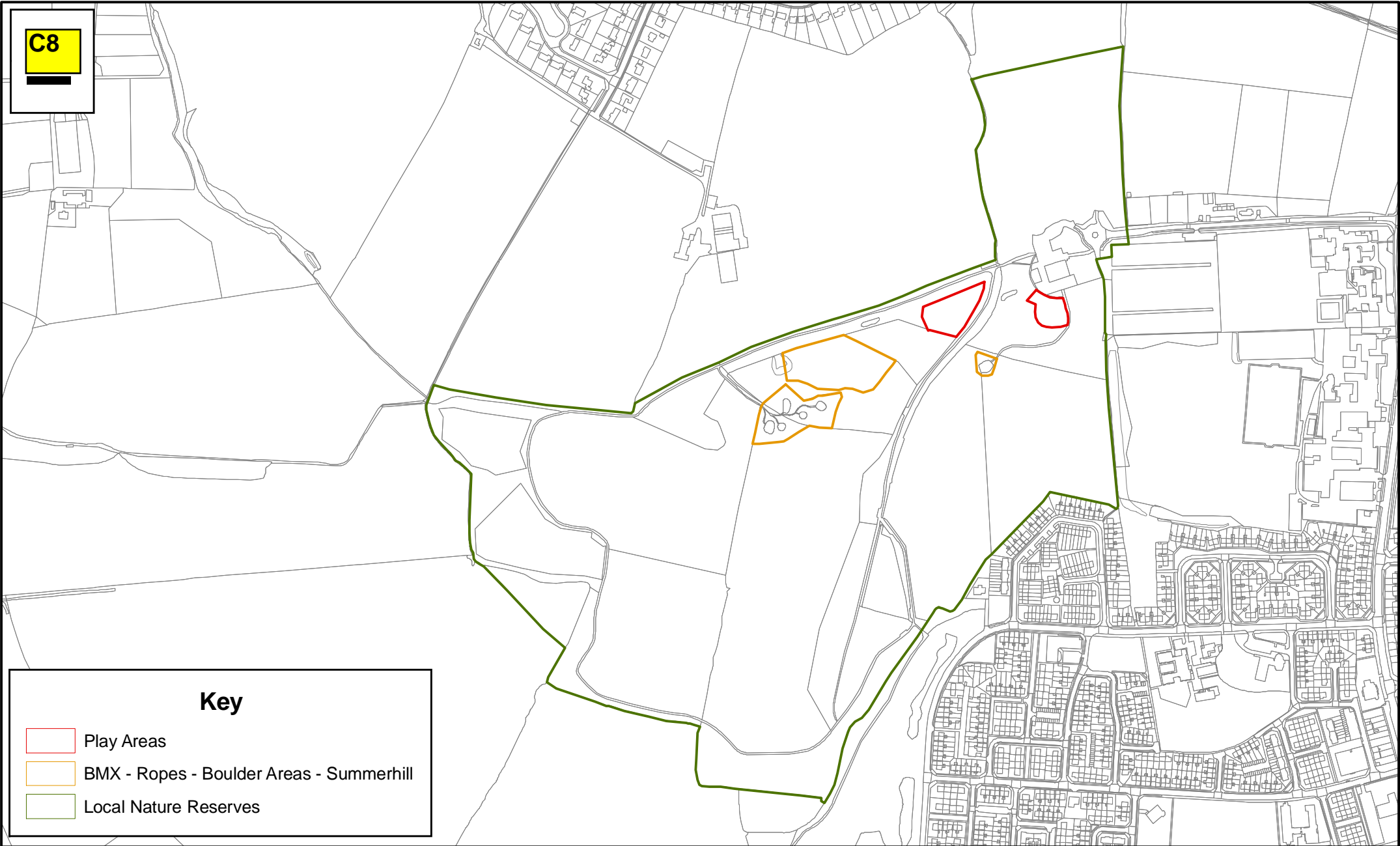
Tel: 01429 523524
Fax: 01429 523450

Summerhill LNR

C8

Key

-  Play Areas
-  BMX - Ropes - Boulder Areas - Summerhill
-  Local Nature Reserves



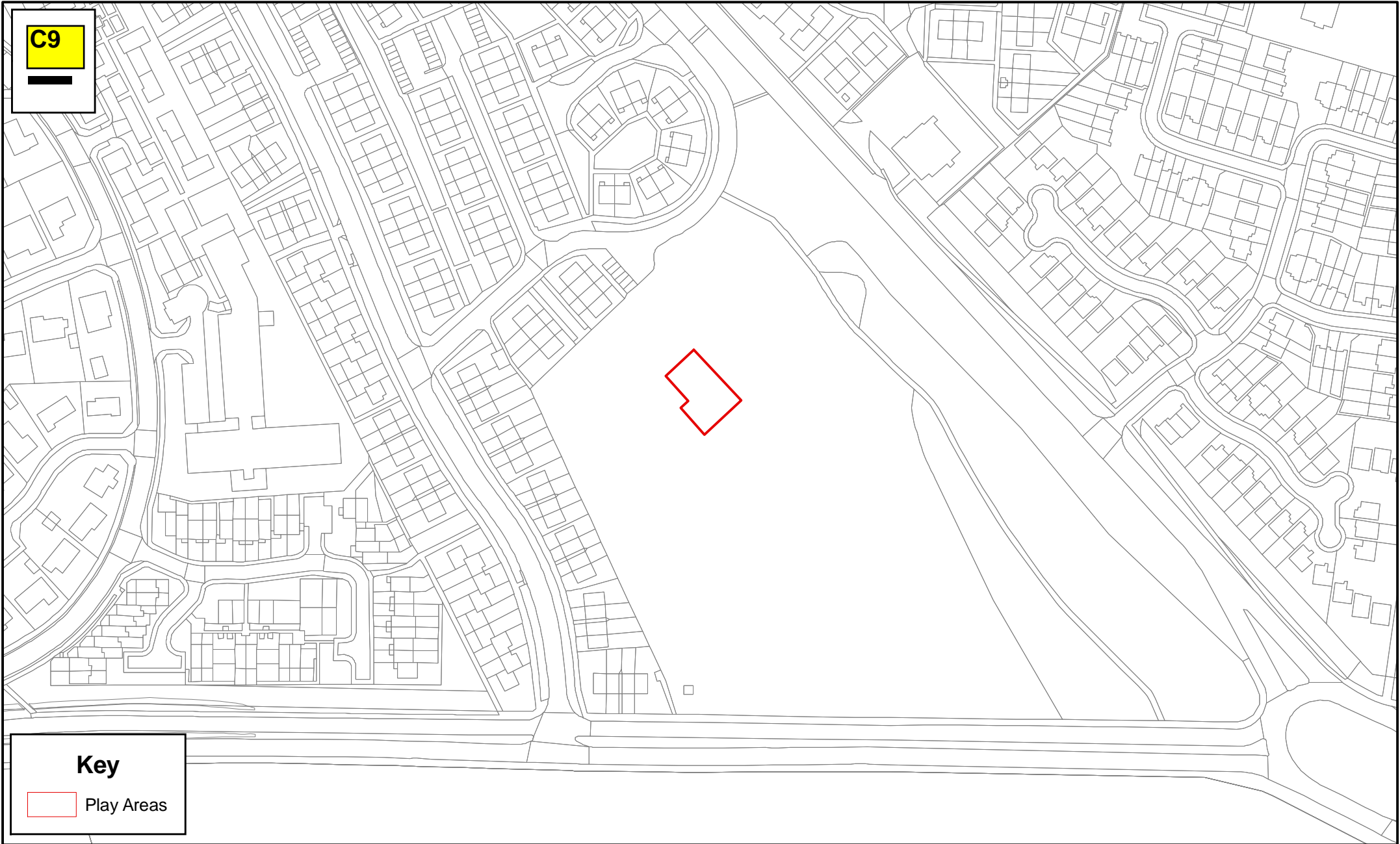
This map is reproduced from Ordnance Survey material with the permission of Ordnance Survey on behalf of the controller of Her Majesty's office © Crown copyright. Unauthorised reproduction infringes Crown copyright and may lead to prosecution or civil proceedings. Hartlepool.B.C. LA09057L 1999

Sub Title: Dog Control Order Areas
 Scale: 1:6,500
 Date: 9th November 2007
 Drawn By: Parks and Countryside BU

Hartlepool Borough Council
 Adult and Community Services Department
 Parks and Countryside
 Suite 8, Municipal Buildings
 Church Square
 Hartlepool, TS24 7EQ
 Tel: 01429 523524
 Fax: 01429 523450

Clavering Play Area

C9



Key



Play Areas



This map is reproduced from Ordnance Survey material with the permission of Ordnance Survey on behalf of the controller of Her Majesty's office © Crown copyright. Unauthorised reproduction infringes Crown copyright and may lead to prosecution or civil proceedings. Hartlepool.B.C. LA09057L 1999

Sub Title: Dog Control Order Areas

Scale: 1:2,000

Date: 9th November 2007

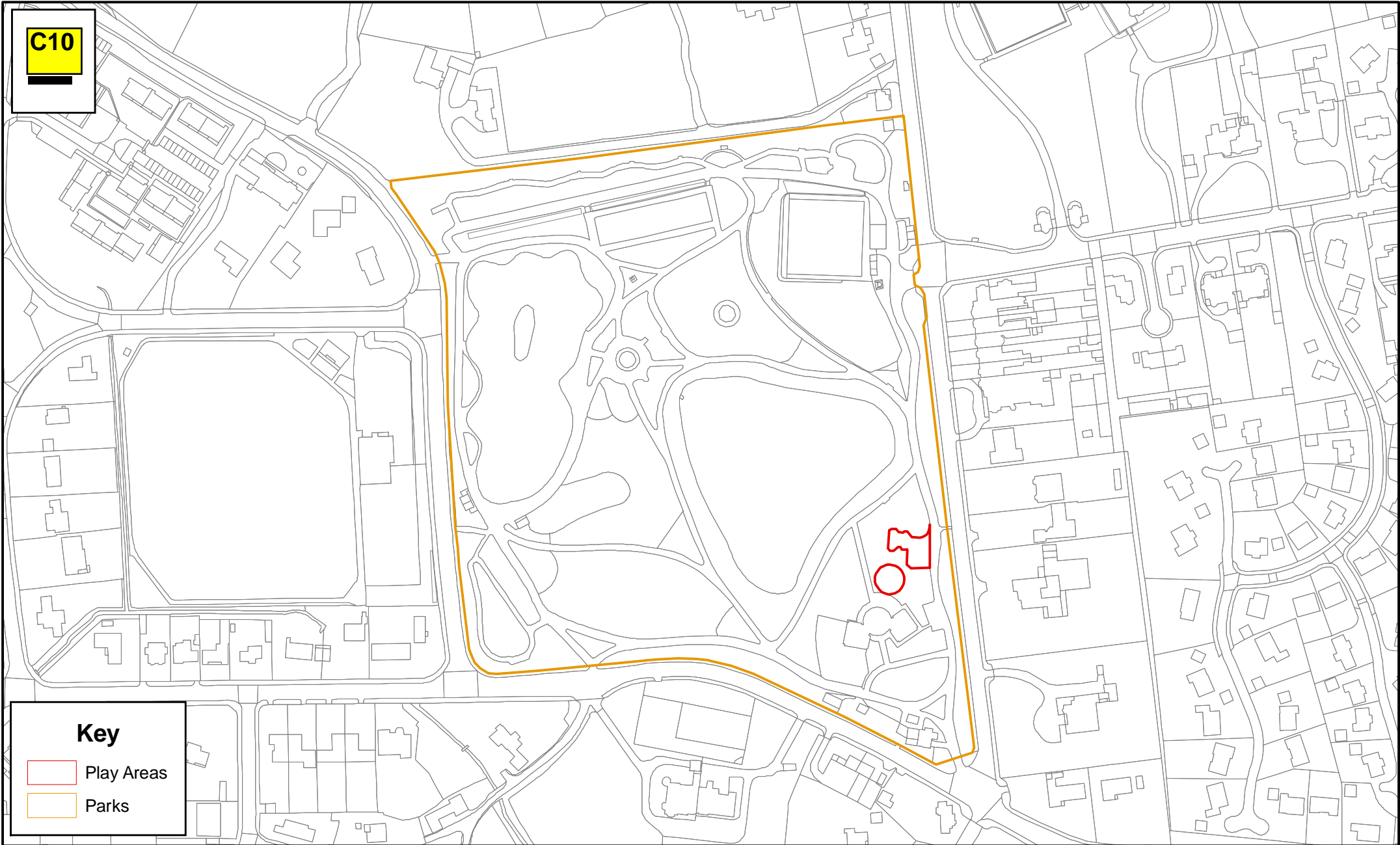
Drawn By: Parks and Countryside BU

Hartlepool Borough Council
Adult and Community Services Department
Parks and Countryside
Suite 8, Municipal Buildings
Church Square
Hartlepool, TS24 7EQ

Tel: 01429 523524
Fax: 01429 523450

Ward Jackson Park

C10



Key

-  Play Areas
-  Parks



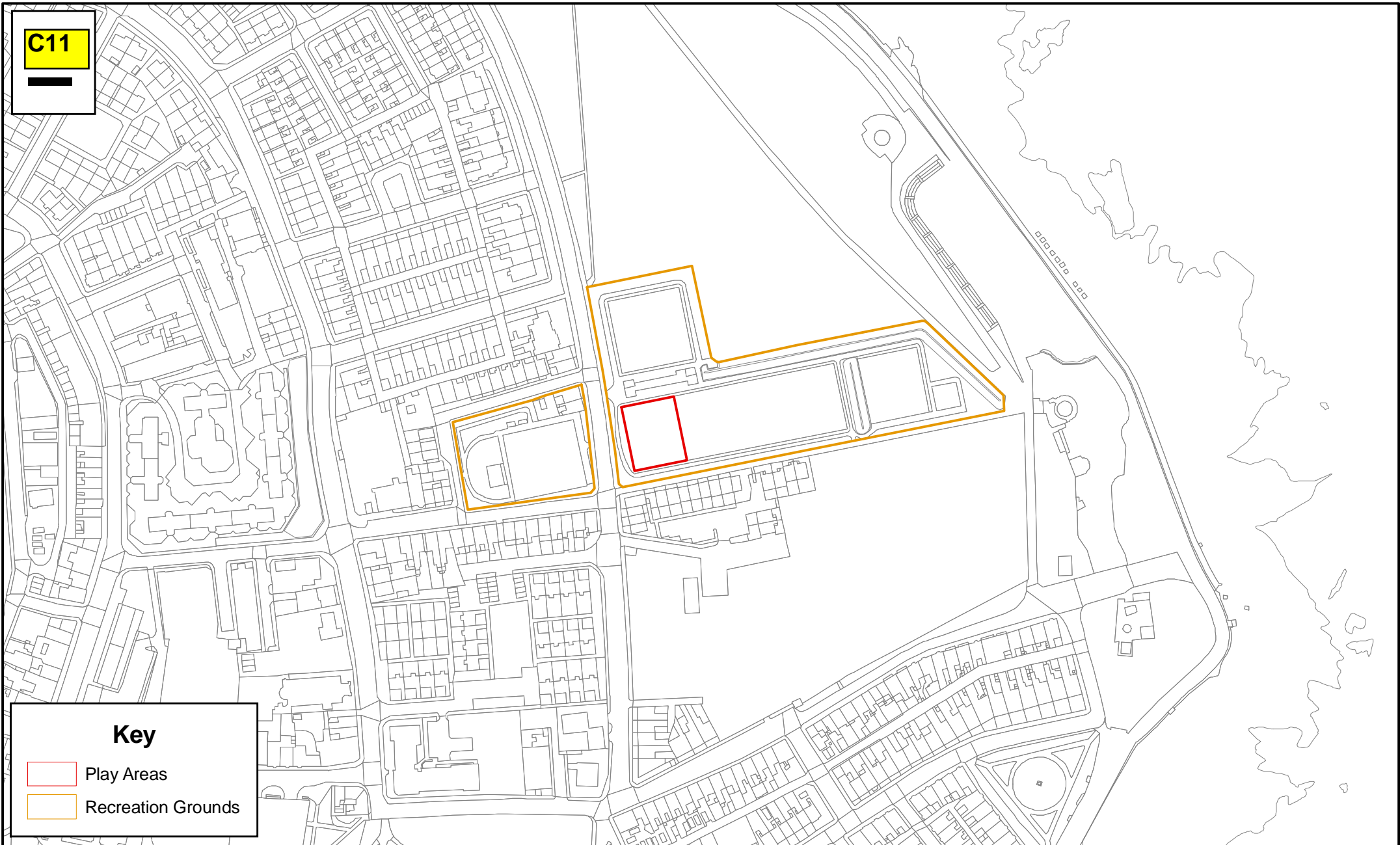
This map is reproduced from Ordnance Survey material with the permission of Ordnance Survey on behalf of the controller of Her Majesty's office © Crown copyright. Unauthorised reproduction infringes Crown copyright and may lead to prosecution or civil proceedings. Hartlepool.B.C. LA09057L 1999

Sub Title: Dog Control Order Areas
Scale: 1:2,500
Date: 9th November 2007
Drawn By: Parks and Countryside BU



Hartlepool Borough Council
Adult and Community Services Department
Parks and Countryside
Suite 8, Municipal Buildings
Church Square
Hartlepool, TS24 7EQ
Tel: 01429 523524
Fax: 01429 523450

Town Moor

C11



Key

-  Play Areas
-  Recreation Grounds



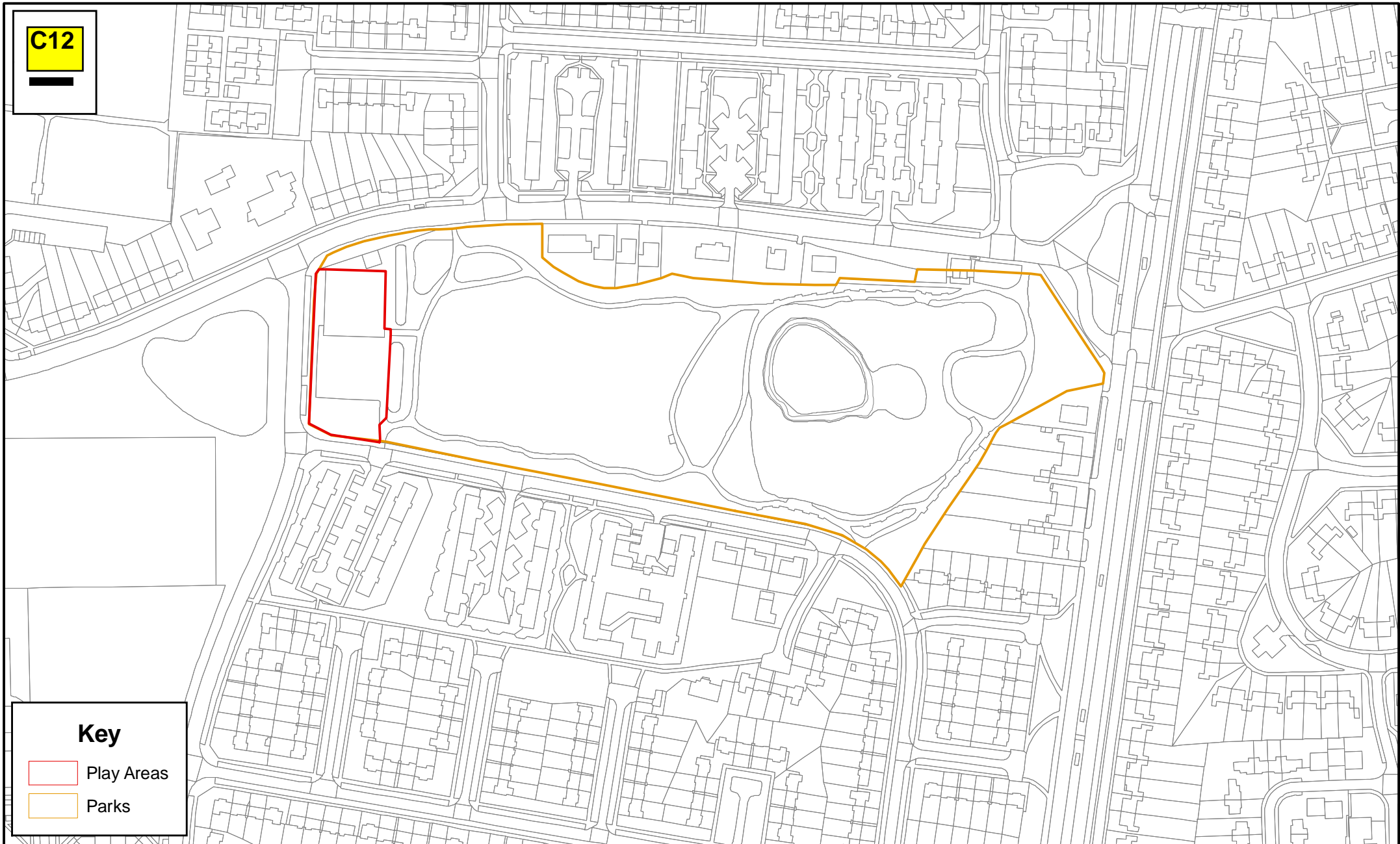
This map is reproduced from Ordnance Survey material with the permission of Ordnance Survey on behalf of the controller of Her Majesty's office © Crown copyright. Unauthorised reproduction infringes Crown copyright and may lead to prosecution or civil proceedings. Hartlepool.B.C. LA09057L 1999

Sub Title: Dog Control Order Areas
Scale: 1:2,500
Date: 9th November 2007
Drawn By: Parks and Countryside BU

Hartlepool Borough Council
Adult and Community Services Department
Parks and Countryside
Suite 8, Municipal Buildings
Church Square
Hartlepool, TS24 7EQ
Tel: 01429 523524
Fax: 01429 523450

Rossmere Park

C12



Key

-  Play Areas
-  Parks



This map is reproduced from Ordnance Survey material with the permission of Ordnance Survey on behalf of the controller of Her Majesty's office © Crown copyright. Unauthorised reproduction infringes Crown copyright and may lead to prosecution or civil proceedings. Hartlepool.B.C. LA09057L 1999

Sub Title: Dog Control Order Areas
Scale: 1:2,500
Date: 9th November 2007
Drawn By: Parks and Countryside BU

Hartlepool Borough Council
Adult and Community Services Department
Parks and Countryside
Suite 8, Municipal Buildings
Church Square
Hartlepool, TS24 7EQ
Tel: 01429 523524
Fax: 01429 523450

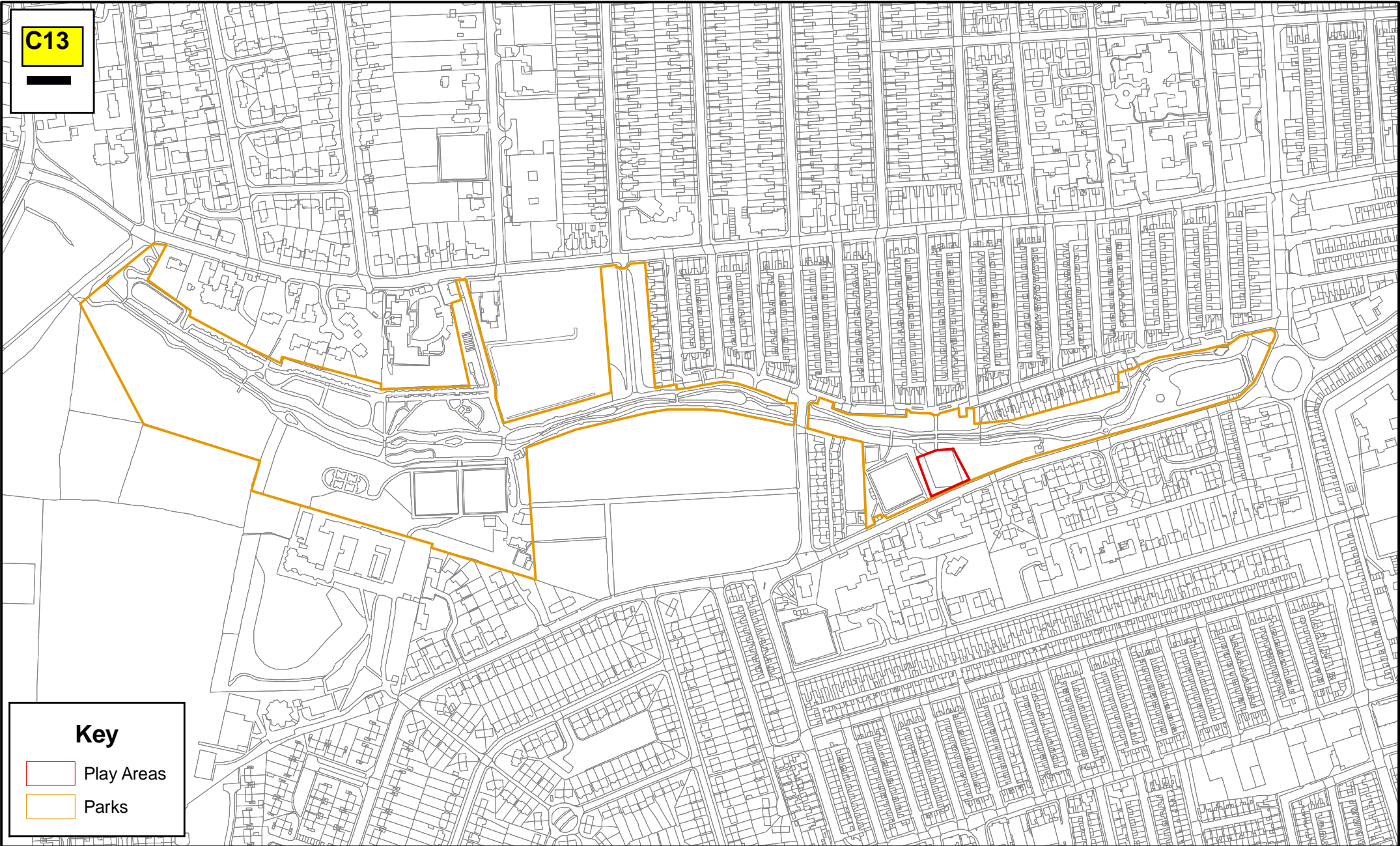
Burn Valley Gardens

C13



Key

-  Play Areas
-  Parks



This map is reproduced from Ordnance Survey material with the permission of Ordnance Survey on behalf of the controller of Her Majesty's office © Crown copyright. Unauthorised reproduction infringes Crown copyright and may lead to prosecution or civil proceedings. Hartlepool.B.C. LA09057L 1999

Sub Title: Dog Control Order Areas

Scale: 1:4,500

Date: 9th November 2007

Drawn By: Parks and Countryside BU

Hartlepool Borough Council
Adult and Community Services Department
Parks and Countryside
Suite 8, Municipal Buildings
Church Square
Hartlepool, TS24 7EQ

Tel: 01429 523524

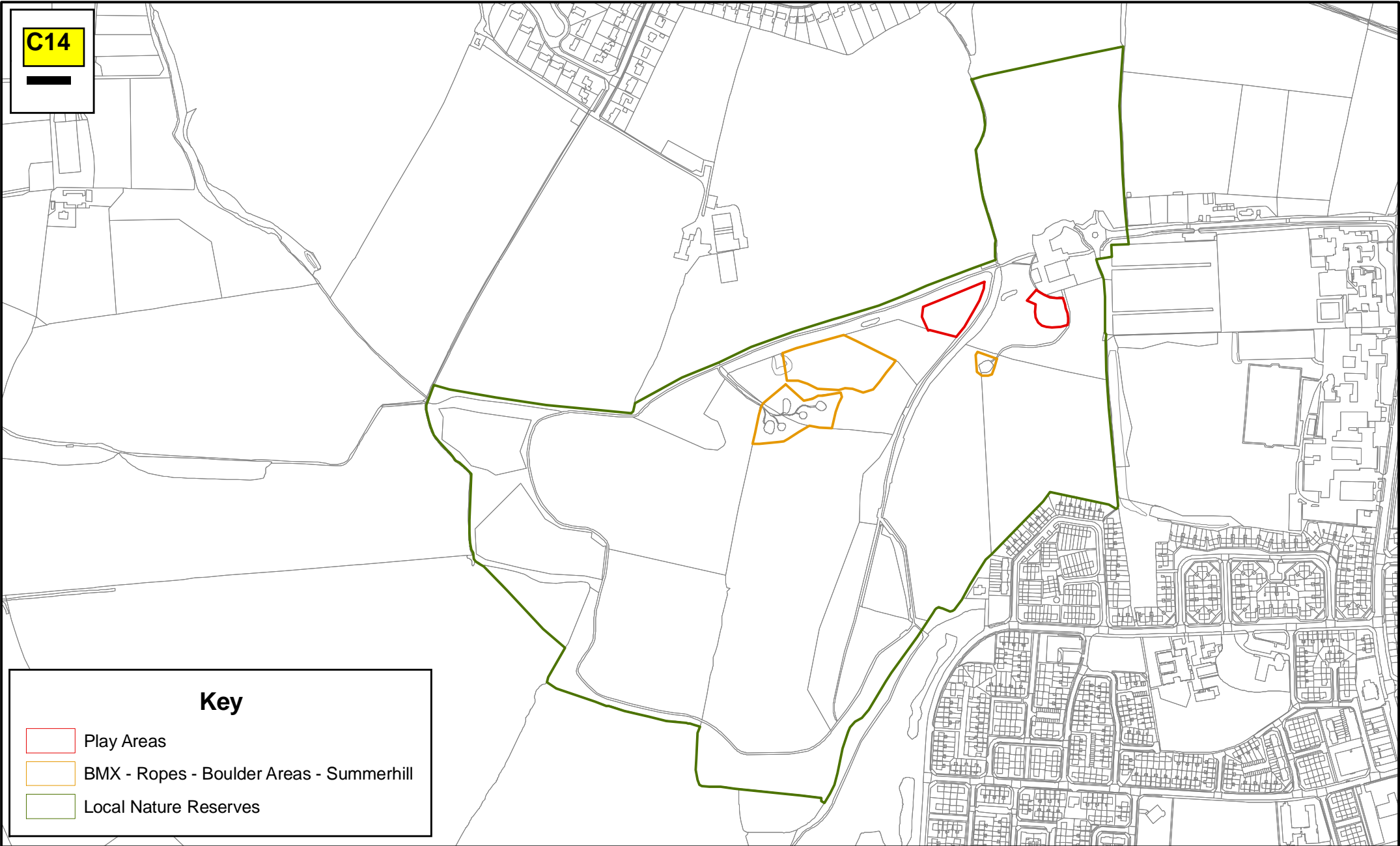
Fax: 01429 523450

Summerhill LNR

C14

Key

- Play Areas
- BMX - Ropes - Boulder Areas - Summerhill
- Local Nature Reserves



This map is reproduced from Ordnance Survey material with the permission of Ordnance Survey on behalf of the controller of Her Majesty's office © Crown copyright. Unauthorised reproduction infringes Crown copyright and may lead to prosecution or civil proceedings. Hartlepool.B.C. LA09057L 1999



Sub Title: Dog Control Order Areas
 Scale: 1:6,500
 Date: 9th November 2007
 Drawn By: Parks and Countryside BU

Hartlepool Borough Council
 Adult and Community Services Department
 Parks and Countryside
 Suite 8, Municipal Buildings
 Church Square
 Hartlepool, TS24 7EQ
 Tel: 01429 523524
 Fax: 01429 523450

Block Sands

C15

Key

-  Play Areas
-  Beach Dog Control Areas

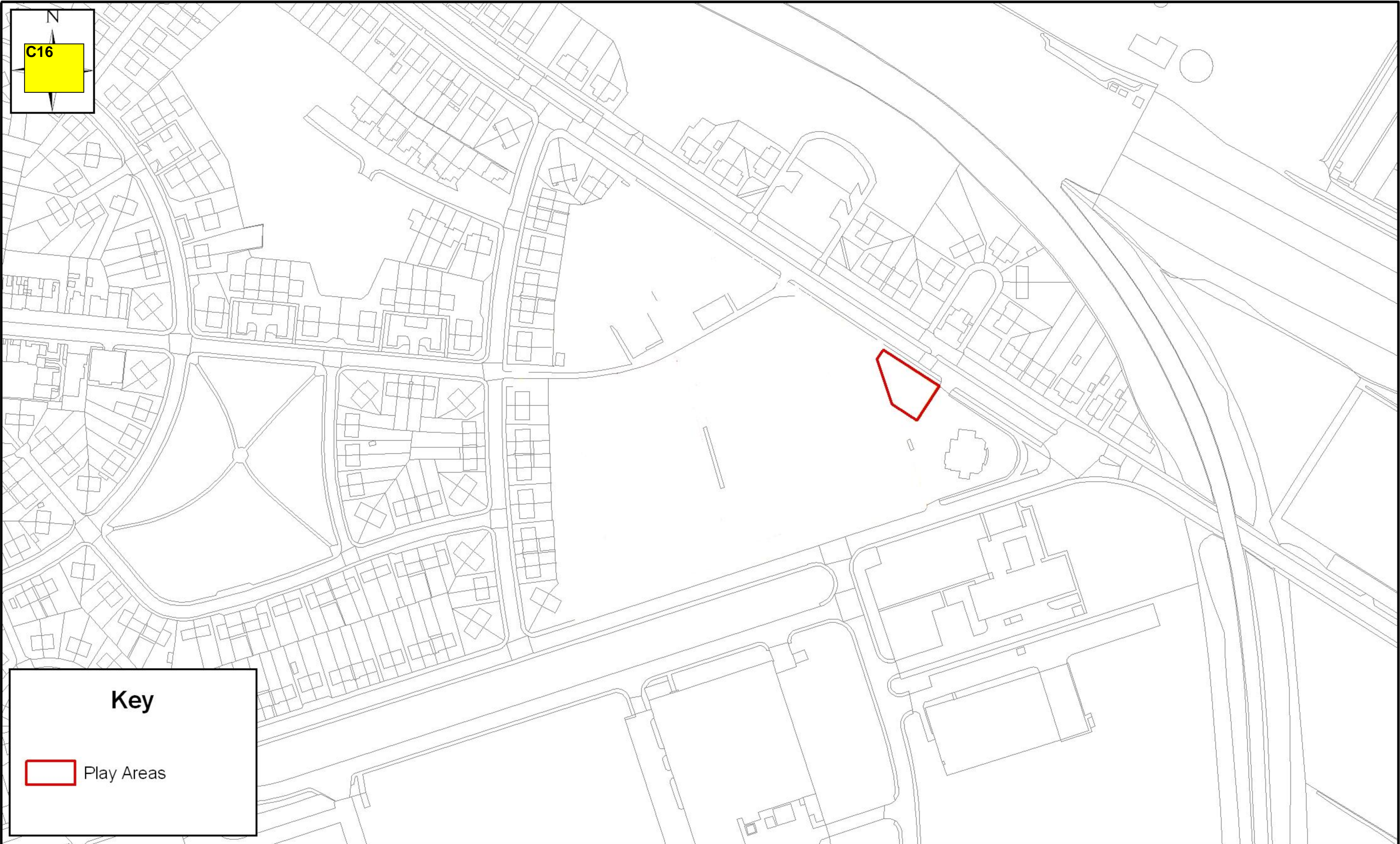


This map is reproduced from Ordnance Survey material with the permission of Ordnance Survey on behalf of the controller of Her Majesty's office © Crown copyright. Unauthorised reproduction infringes Crown copyright and may lead to prosecution or civil proceedings. Hartlepool.B.C. LA09057L 1999

Sub Title: Dog Control Order Areas
Scale: 1:1,500
Date: 9th November 2007
Drawn By: Parks and Countryside BU

Hartlepool Borough Council
Adult and Community Services Department
Parks and Countryside
Suite 8, Municipal Buildings
Church Square
Hartlepool, TS24 7EQ
Tel: 01429 523524
Fax: 01429 523450

King George V



This map is reproduced from Ordnance Survey material with the permission of Ordnance Survey on behalf of the controller of Her Majesty's office © Crown copyright. Unauthorised reproduction infringes Crown copyright and may lead to prosecution or civil proceedings. Hartlepool.B.C. LA09057L 1999

Sub Title: Dog Control Order Areas
Scale: 1:2,500
Date: 9th November 2007
Drawn By: Parks and Countryside BU

Hartlepool Borough Council
Adult and Community Services Department
Parks and Countryside
Suite 8, Municipal Buildings
Church Square
Hartlepool, TS24 7EQ
Tel: 01429 523524
Fax: 01429 523450

Grayfields

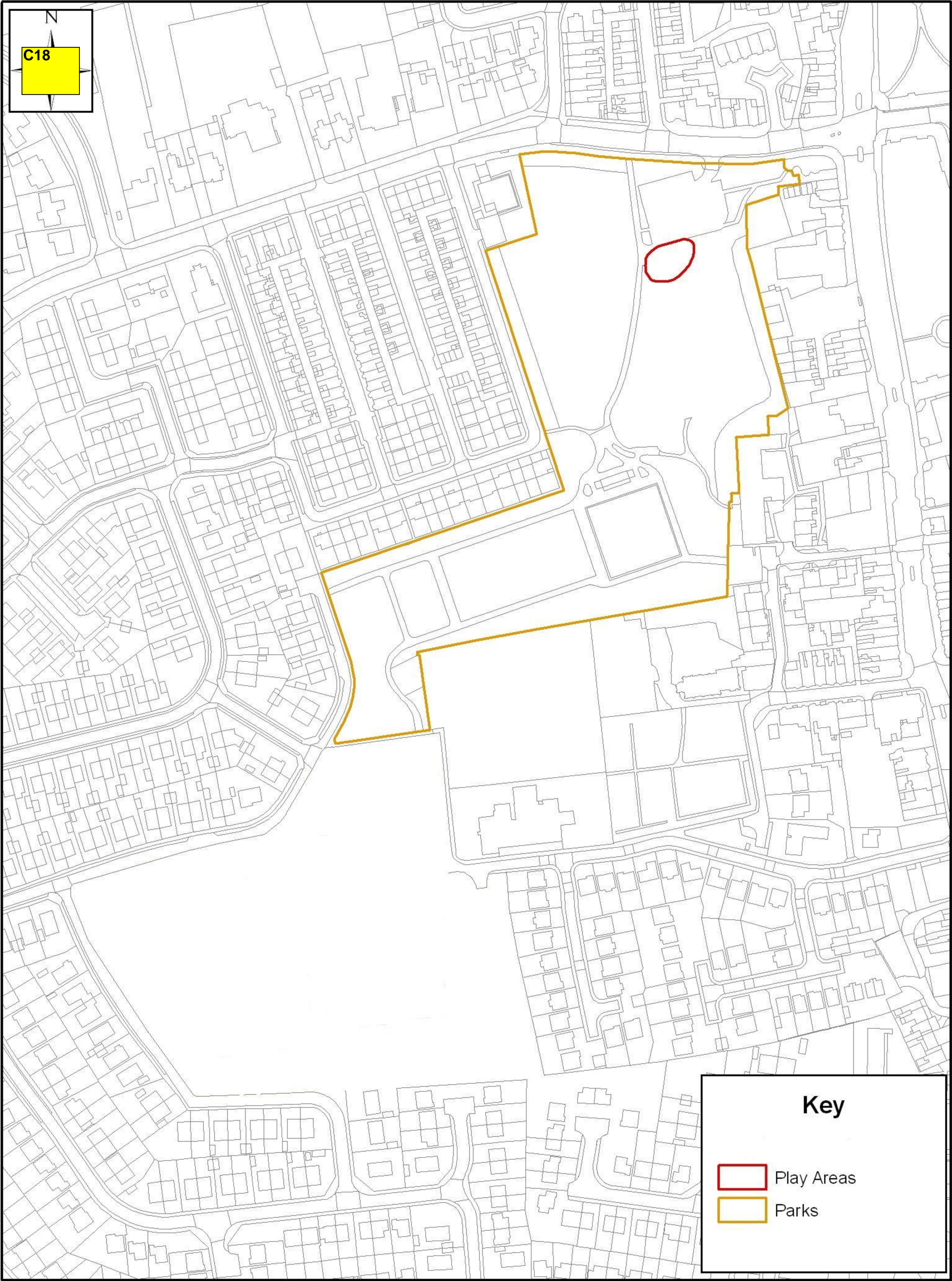


This map is reproduced from Ordnance Survey material with the permission of Ordnance Survey on behalf of the controller of Her Majesty's office © Crown copyright. Unauthorised reproduction infringes Crown copyright and may lead to prosecution or civil proceedings. Hartlepool.B.C. LA09057L 1999

Sub Title: Dog Control Order Areas
Scale: 1:4,000
Date: 9th November 2007
Drawn By: Parks and Countryside BU

Hartlepool Borough Council
Adult and Community Services Department
Parks and Countryside
Suite 8, Municipal Buildings
Church Square
Hartlepool, TS24 7EQ
Tel: 01429 523524
Fax: 01429 523450

Seaton Park



Key

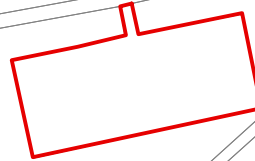
-  Play Areas
-  Parks

Oxford Road Play Area

C19

Key

 Play Areas



This map is reproduced from Ordnance Survey material with the permission of Ordnance Survey on behalf of the controller of Her Majesty's office © Crown copyright. Unauthorised reproduction infringes Crown copyright and may lead to prosecution or civil proceedings. Hartlepool.B.C. LA09057L 1999

Sub Title: Dog Control Order Areas

Scale: 1:1,000

Date: 9th November 2007

Drawn By: Parks and Countryside BU

Hartlepool Borough Council
Adult and Community Services Department
Parks and Countryside
Suite 8, Municipalside
Church Square
Hartlepool, TS24 7EQ

Tel: 01429 523524
Fax: 01429 523450

King Oswy Drive Play Area

C20

Key



Play Areas



This map is reproduced from Ordnance Survey material with the permission of Ordnance Survey on behalf of the controller of Her Majesty's office © Crown copyright. Unauthorised reproduction infringes Crown copyright and may lead to prosecution or civil proceedings. Hartlepool.B.C. LA09057L 1999

Sub Title: Dog Control Order Areas

Scale: 1:2,500

Date: 9th November 2007

Drawn By: Parks and Countryside BU

Hartlepool Borough Council
Adult and Community Services Department
Parks and Countryside
Suite 8, Municipal Buildings
Church Square
Hartlepool, TS24 7EQ

Tel: 01429 523524
Fax: 01429 523450

Jutland Road Play Area

C21



Key



Play Areas



This map is reproduced from Ordnance Survey material with the permission of Ordnance Survey on behalf of the controller of Her Majesty's office © Crown copyright. Unauthorised reproduction infringes Crown copyright and may lead to prosecution or civil proceedings. Hartlepool.B.C. LA09057L 1999

Sub Title: Dog Control Order Areas

Scale: 1:1,500

Date: 9th November 2007

Drawn By: Parks and Countryside BU

Hartlepool Borough Council
Adult and Community Services Department
Parks and Countryside
Suite 8, Municipal Buildings
Church Square
Hartlepool, TS24 7EQ

Tel: 01429 523524
Fax: 01429 523450

Greatham Play Area

C22



Key

 Play Areas



This map is reproduced from Ordnance Survey material with the permission of Ordnance Survey on behalf of the controller of Her Majesty's office © Crown copyright. Unauthorised reproduction infringes Crown copyright and may lead to prosecution or civil proceedings. Hartlepool.B.C. LA09057L 1999

Sub Title: Dog Control Order Areas

Scale: 1:1,500

Date: 9th November 2007

Drawn By: Parks and Countryside BU

Hartlepool Borough Council
Adult and Community Services Department
Parks and Countryside
Suite 8, Municipal Buildings
Church Square
Hartlepool, TS24 7EQ

Tel: 01429 523524
Fax: 01429 523450

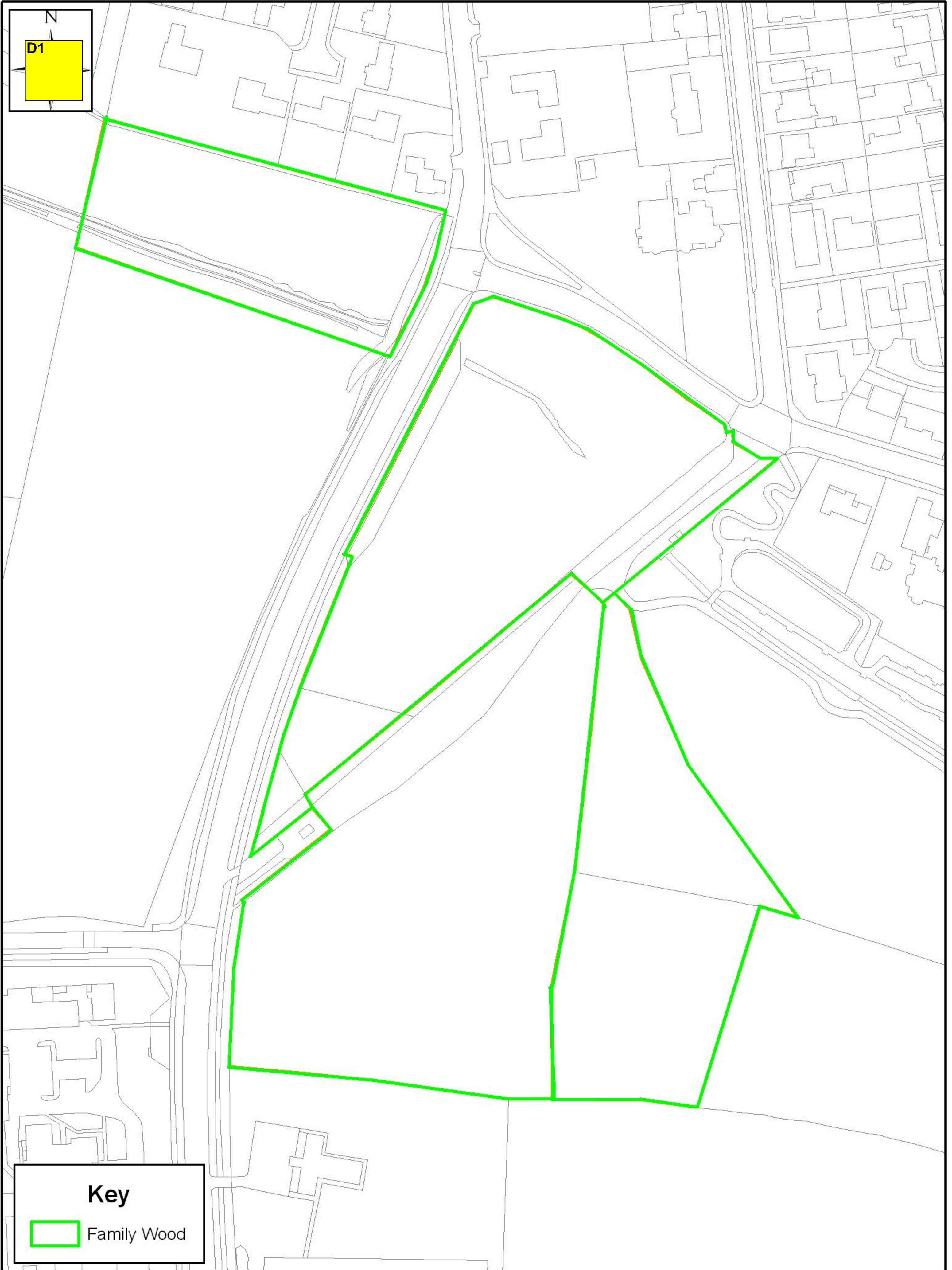
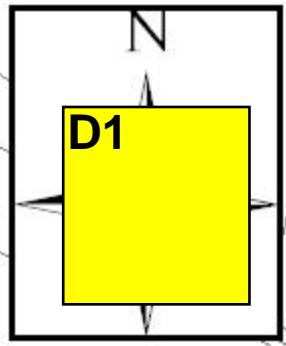
APPENDIX D

The following locations are areas where dogs shall be permitted to exercise freely; however, an Authorised Officer shall retain the power to direct a person to put, and keep a dog on a lead.

- FAMILY WOOD, ELWICK RD (see map D1)
- HART TO HASWELL LNR (see map D2)
- SEATON DUNES & COMMON LNR (see map D3)
- GREATHAM BECK LNR (see map D4)
- SPION COP LNR (see map D5)
- HART WARREN DUNES LNR (see map D6)
- SUMMERHILL VISITOR CENTRE (see map D7)

This list is not exhaustive, but indicative in its approach.

Family Wood



Key



Family Wood



This map is reproduced from Ordnance Survey material with the permission of Ordnance Survey on behalf of the controller of Her Majesty's office © Crown copyright. Unauthorised reproduction infringes Crown copyright and may lead to prosecution or civil proceedings. Hartlepool.B.C. LA09057L 1999

Sub Title: Dog Control Order Areas
Scale: 1:1,750
Date: 9th November 2007
Drawn By: Parks & Countryside BU

Hartlepool Borough Council
Adult & Community Services Department
Parks and Countryside
Suite 8, Municipal Buildings
Church Square
Hartlepool, TS24 7EQ
Tel: 01429 523524
Fax: 01429 523450

Hart to Haswell LNR

D2

Key

Local Nature Reserves



This map is reproduced from Ordnance Survey material with the permission of Ordnance Survey on behalf of the controller of Her Majesty's office © Crown copyright. Unauthorised reproduction infringes Crown copyright and may lead to prosecution or civil proceedings. Hartlepool.B.C. LA09057L 1999

Sub Title: Dog Control Order Areas

Scale: 1:8,500

Date: 9th November 2007

Drawn By: Parks and Countryside BU

Hartlepool Borough Council
Adult and Community Services Department
Parks and Countryside
Suite 8, Municipal Buildings
Church Square
Hartlepool, TS24 7EQ

Tel: 01429 523524
Fax: 01429 523450

Seaton Dunes & Common LNR

D3

Key

 Local Nature Reserves



This map is reproduced from Ordnance Survey material with the permission of Ordnance Survey on behalf of the controller of Her Majesty's office © Crown copyright. Unauthorised reproduction infringes Crown copyright and may lead to prosecution or civil proceedings. Hartlepool.B.C. LA09057L 1999

Sub Title: Dog Control Order Areas

Scale: 1:10,000

Date: 9th November 2007

Drawn By: Parks and Countryside BU

Hartlepool Borough Council
Adult and Community Services Department
Parks and Countryside
Suite 8, Municipal Buildings
Church Square
Hartlepool, TS24 7EQ

Tel: 01429 523524
Fax: 01429 523450

Greatham Beck LNR

D4

Key

 Local Nature Reserves



This map is reproduced from Ordnance Survey material with the permission of Ordnance Survey on behalf of the controller of Her Majesty's office © Crown copyright. Unauthorised reproduction infringes Crown copyright and may lead to prosecution or civil proceedings. Hartlepool.B.C. LA09057L 1999

Sub Title: Dog Control Order Areas

Scale: 1:3,500

Date: 9th November 2007

Drawn By: Parks and Countryside BU

Hartlepool Borough Council
Adult and Community Services Department
Parks and Countryside
Suite 8, Municipal Buildings
Church Square
Hartlepool, TS24 7EQ

Tel: 01429 523524
Fax: 01429 523450

Spion Kop LNR

D5

Key

 Local Nature Reserves



This map is reproduced from Ordnance Survey material with the permission of Ordnance Survey on behalf of the controller of Her Majesty's office © Crown copyright. Unauthorised reproduction infringes Crown copyright and may lead to prosecution or civil proceedings. Hartlepool.B.C. LA09057L 1999

Sub Title: Dog Control Order Areas

Scale: 1:4,000

Date: 9th November 2007

Drawn By: Parks and Countryside BU

Hartlepool Borough Council
Adult and Community Services Department
Parks and Countryside
Suite 8, Municipal Buildings
Church Square
Hartlepool, TS24 7EQ

Tel: 01429 523524
Fax: 01429 523450

Hart Warren Dunes LNR

D6



Key

Local Nature Reserves



This map is reproduced from Ordnance Survey material with the permission of Ordnance Survey on behalf of the controller of Her Majesty's office © Crown copyright. Unauthorised reproduction infringes Crown copyright and may lead to prosecution or civil proceedings. Hartlepool.B.C. LA09057L 1999

Sub Title: Dog Control Order Areas

Scale: 1:6,500

Date: 9th November 2007

Drawn By: Parks and Countryside BU




Hartlepool Borough Council
Adult and Community Services Department
Parks and Countryside
Suite 8, Municipal Buildings
Church Square
Hartlepool, TS24 7EQ

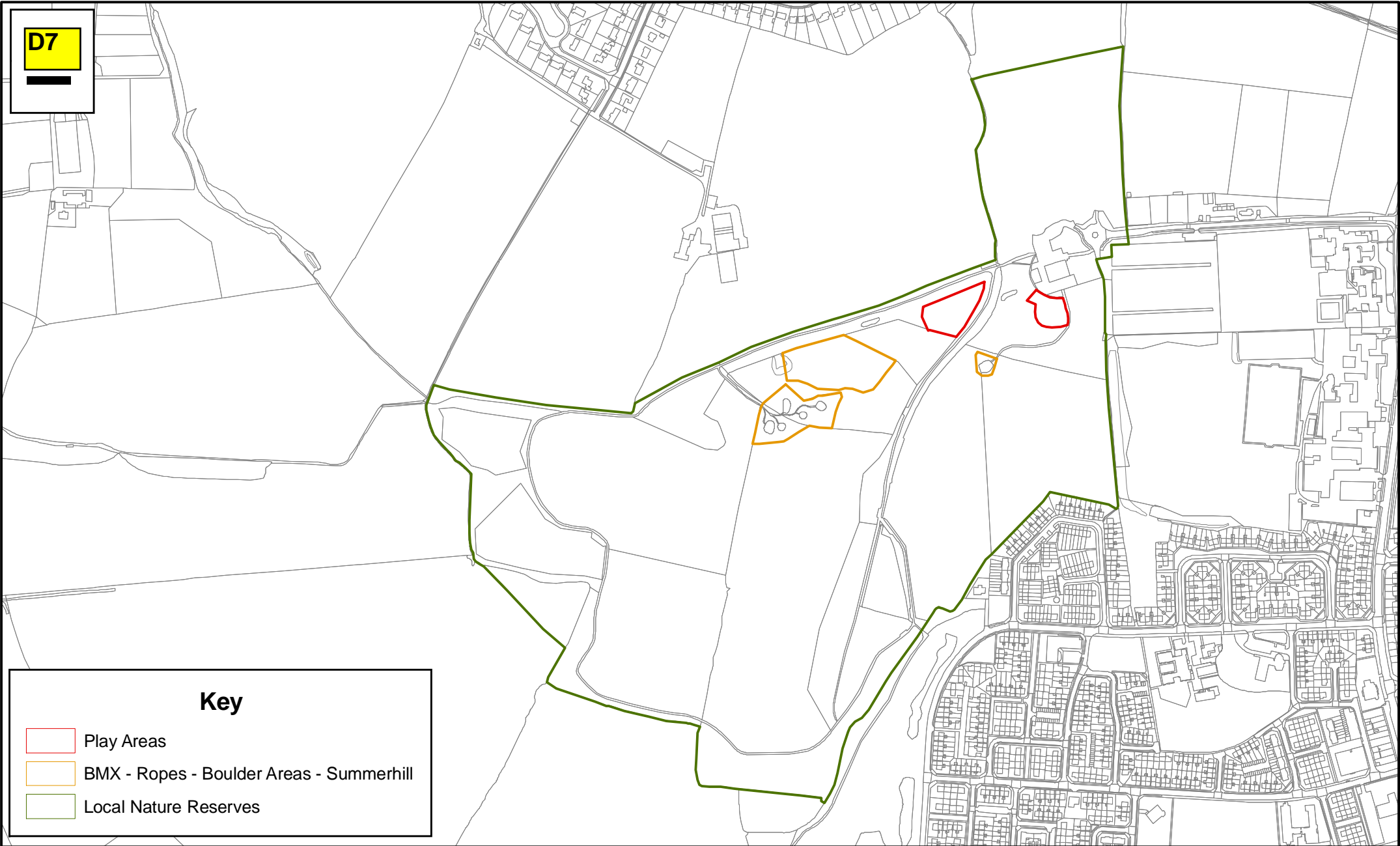
Tel: 01429 523524
Fax: 01429 523450

Summerhill LNR

D7

Key

-  Play Areas
-  BMX - Ropes - Boulder Areas - Summerhill
-  Local Nature Reserves



This map is reproduced from Ordnance Survey material with the permission of Ordnance Survey on behalf of the controller of Her Majesty's office © Crown copyright. Unauthorised reproduction infringes Crown copyright and may lead to prosecution or civil proceedings. Hartlepool.B.C. LA09057L 1999

Sub Title: Dog Control Order Areas

Scale: 1:6,500

Date: 9th November 2007

Drawn By: Parks and Countryside BU

Hartlepool Borough Council
Adult and Community Services Department
Parks and Countryside
Suite 8, Municipal Buildings
Church Square
Hartlepool, TS24 7EQ
Tel: 01429 523524
Fax: 01429 523450