

CHILDREN'S SERVICES SCRUTINY FORUM AGENDA



Tuesday 7th February 2006

at 2.00 pm

in Committee Room B

MEMBERS: CHILDREN'S SERVICES SCRUTINY FORUM:

Cambridge, Coward, Fleet, Griffin, Hargreaves, Lauderdale, London, Preece,
Richardson, Shaw and Wistow

Co-opted Members: Elizabeth Barraclough, David Relton and Reverend Jesse Smith

Resident Representatives: Muriel Boreland, Ian Campbell and Joan Smith

Education Advisor: Rob Lowe

1. APOLOGIES FOR ABSENCE

2. TO RECEIVE ANY DECLARATIONS OF INTEREST BY MEMBERS

3. MINUTES

3.1 To confirm the minutes of the meeting held on 20th December 2005 (*attached*)

4. RESPONSES FROM THE COUNCIL, THE EXECUTIVE OR COMMITTEES OF THE COUNCIL TO FINAL REPORTS OF THIS FORUM

4.1 Adult Learning Inspection – *Portfolio Holder for Adult and Public Health Services*

5. CONSIDERATION OF REQUEST FOR SCRUTINY REVIEWS REFERRED VIA SCRUTINY CO-ORDINATING COMMITTEE

No Items

6. CONSIDERATION OF PROGRESS REPORTS/BUDGET AND POLICY FRAMEWORK DOCUMENTS

- 6.1 Scrutiny of the Second Draft of the Children's and Young Peoples Plan (CYPP) – *Director of Children's Services*

7. ITEMS FOR DISCUSSION

No Items

8. ANY OTHER ITEMS WHICH THE CHAIRMAN CONSIDERS ARE URGENT

ITEMS FOR INFORMATION

- a) **Date of Next Meeting Tuesday 7th March 2006, commencing at 2.00pm in Committee Room B**

CHILDREN'S SERVICES SCRUTINY FORUM

MINUTES

20th December 2005

Present:

Councillor: Jane Shaw (In the Chair)

Councillors: Cambridge, Fleet, Griffin, Lilley, London, Preece and Richardson.

Co-opted Member: Liz Barraclough

Resident Representatives: Ian Campbell and Joan Smith

Officers: Sue Johnson, Assistant Director Children's Services
Jonathan Wistow, Scrutiny Support Officer
Rebecca Redman, Research Assistant (Scrutiny Support)
Pat Watson, Democratic Services Officer

Also present: Tracy Foster, Community Network Officer (HVDA)

32. Apologies for Absence

Apologies for absence were submitted from Councillors Lauderdale and Wistow. Also from Jan Fawcett, Rob Lowe and Muriel Boreland.

33. Declarations of interest by members

None

34. Minutes

The minutes of the meeting held on 22nd November 2005 were confirmed.

35. Involving Young People – Draft Final Report (*Scrutiny Support Officer*)

The Forum were presented with the draft findings of the inquiry into Involving Young People. In the Introduction and Setting the Scene sections of the report Members were advised of the initial reasons, the history and process of the inquiry.

The overall aim of the inquiry was the co-ordination of the development of a strategy to involve young people and the development of mechanisms – identified by the young people themselves, to engage in district affairs. Terms of Reference of the first stage of the inquiry were outlined

The report gave details of the membership of the Forum since the start of the Inquiry in 2003 to the present date. The methods of investigation were listed and the Scrutiny Findings, divided into three sections, were detailed – a brief outline of which follows:

Findings Section 1 – Schools and Youth Project Visits

- Questionnaire Results from School Visits
- Responses from Manor West Residents Association – Cool Project
- Responses from Beck Buddies
- Working Group Findings / Recommendations
- General Feedback
- Access to Activities
- Libraries

Recommendations 1 to 5 resulted from the above and these were detailed in the report.

Findings Section 2 – Community Network Consultation and Mechanism to Involve young People in Decision Making:

The report detailed this part of the Inquiry and the resulting Recommendations 6 to 9

The draft findings of work commissioned by the Community Network, The Involvement of Young People in Decision Making in Hartlepool, were listed in an appendix and its 18 recommendations were included in the report.

Findings Section 3 – Co-ordinating Participation

The report detailed this element of the inquiry and the resulting Recommendations 10 to 17.

During the discussion that followed presentation of the draft final report, slight amendments were agreed to the report, as follows:

- In the paragraph following Recommendations 1, the words 'pros' and 'cons' be replaced by 'practicalities'.
- An addition be made to Recommendation 3 to include consultation with the young people involved in producing the HYPE magazine.

The Scrutiny Support Officer advised that the next item on the Agenda relating to Children's Champions may result in the incorporation of an additional recommendation to those in the Decision that follows.

Decision

As a result of the evidence gathered by the Forum and the findings reached, Members approved the final report and the recommendations outlined below:

Recommendation 1:

- a) That the Forum sends its findings to all schools in the town, thanking those who were involved in the process, whilst asking each school how they would like us to follow up the scrutiny process.
- b) That six months after the Forum has completed its final report the young people involved in the scrutiny process should be consulted to see if anything has changed in their view.
- c) That the young people involved in the process should be invited to meet the Chair of the Council.
- d) That the Forum holds a series of meetings with young people at venues (possibly in schools) outside of the Council in the north/central/south areas of the town.
- e) That the Forum should actively pursue the possibility of co-opting young people onto the Forum.

Recommendation 2

That the nature of local funding needs to be explained to young people so that they are aware of why something is built in one part of town but not in another. This could be achieved through the citizenship and PHSE strands of the schools' curriculum.

Recommendation 3

It is recommended that the council develops a leaflet outlining all the activities for young people for the north, south and central areas, and consults with young people involved in producing the HYPE magazine about how this should be developed. It is important that the Council works in partnership to produce this.

Recommendation 4

Given the evidence gathered by the Forum from its schools visits the Forum recommends that young people should be considered as much of a priority as the elderly when accessing public/community transport. The Forum suggests that this recommendation is extended to the Neighbourhood Services Scrutiny Forum, which is currently undertaking an investigation into 'Hartlepool's Bus Service Provision'.

Recommendation 5

- a) That all the town's libraries (including the mobile library) make out of issue books available to children without library cards.
- b) It is recommended that the Forum should liaise in future with schools and libraries, and explore best practice, to develop a strategy for issuing library cards to all young people.

Recommendation 6

That the Council needs a *Citizenship Policy* for all age groups, and the work carried out by the Community Network could usefully link into this. Furthermore, representatives of each of the Council's departments should be involved in the development of a council-wide strategy, and the involvement of the LSP should be sought in relation to adopting this policy. Through a strategy of promoting citizenship young people will be encouraged to become more involved in the running of their local communities.

Recommendation 7

That the Forum supports the recommendations of the Community Network (outlined in section 8.16) and commends them to the Council as a whole.

Recommendation 8

That the Forum supports the development of a Youth Forum/Council, and requests that this is included in the development of the Council's Participation Strategy. The Forum would like the opportunity to comment on this aspect of the Participation Strategy when it is complete.

Recommendation 9

- a) That the Council transfers its advertising in youth papers to HYPE magazine so that it is supportive of the principle of involving young people in decisions that affect their lives.
- b) The Forum recommends that the Council should support positive publicity about children and young people across the town, including in the Council's own Hartbeat magazine.

Recommendation 10

That the Forum was supportive of the continued development of the Participation Network, and would like further links to be explored between this network, the participation strategy and the Children's

Services Forum. It is also recommended that a Member of the Children's Service Scrutiny Forum be appointed as Chair of this body.

Recommendation 11

That the 'Choices, Chances and Changes for Young People' Framework should be developed, where possible, as a basis for involving young people in the democratic process. Furthermore, links should be made between this framework and the Council's Participation Strategy where possible.

Recommendation 12

That the Council should seek to make links between the school councils and the Neighbourhood Forums and that funding streams developed by, and, for young people should be explored through this route.

Recommendation 13

That the Forum supports the development of a Participation Strategy and would like to see linkages developed between this and the Forum's recommendations, and that this strategy should be developed across the town.

Recommendation 14

That the Forum would like to see the findings of this report submitted as a response to the consultation process for the 'Every Hartlepool Child Matters' report.

Recommendation 15

That the Council should approach outside bodies, for example the PCT, Police and Fire Service in relation to making links to the Council's participation work. Furthermore, given the responsibilities of the Police and PCT for involving young people the Council should seek to approach them for additional funding for developing a participation strategy.

Recommendation 16

The Forum recommends that the Council should organise an 'annual youth conference' through which information can be shared by young people and youth practitioners, and that connections should be made with the Participation Network here.

Recommendation 17

The Forum recommends that the Council and Hartlepool NDC explore the possibility of entering into future projects geared towards training 'young advisers'.

36. 'Children's Champions' – Involving Young People Inquiry *(Scrutiny Support Officer)*

The Scrutiny Support Officer sought clarification of the Forum's position on Children's Champions' with a view to incorporating a recommendation on the matter into the Involving Young People Final Report.

The report reminded Members that the notion of appointing Councillors and Resident Representatives as 'Children's' Champions' had been suggested as a possible recommendation of the Involving Young People Inquiry during the course of the investigation. This matter had been discussed by a Working Group (established by this Forum at its meeting on 22nd November 2005) on 1st December 2005 and the Group had agreed that the recommendation should be removed from the Draft Final Report on Involving Young People and be discussed as a separate item.

It had been suggested during the Involving Young People Inquiry that Councillors and Resident Representatives (in their capacity as representatives on the Neighbourhood Forums) should adopt the role of 'Children's Champions'. Thereby 'championing' young people and acting as voices for them in the Council and on the Neighbourhood Forums.

The Forum had made a couple of suggestions in relation to this matter and these were discussed by Members during the meeting:

- a) that every Councillor should act in this capacity (which would provide a large number of advocates for young people but potentially reduce the focus of the role); or
- b) to have a 'Children's' Champion' in every ward (reducing the number of advocates but potentially enhancing the focus of the role).
- c) In addition it was suggested at the Working Group meeting that Resident Representatives could also fulfil this role.

This issue was discussed and the following decision was made.

Decision

The Forum noted the report and, following discussion, agreed to incorporate the following recommendation on 'Children's Champions' into the Involving Young People Final Report as number 18.

Recommendation 18

The Forum supports the notion of making all Councillors and Resident Representatives 'Children's Champions'. However, the Forum would like to receive further information about the practicalities of developing this role at the same stage as further information is provided to the Forum about the development of a Youth Council/Forum in conjunction with the Participation Strategy.

37. Scrutiny of the Draft Children and Young People's Plan – Scoping Report (*Scrutiny Support Officer*)

The report of the Scrutiny Support Officer informed Members of the progress towards a draft first Children and Young People's Plan (CYPP) for consideration by the Forum during February and March 2006.

The report advised that Hartlepool Borough Council has a new duty under the Children's Act 2004 to prepare and publish a CYPP in co-operation with key partners. This would form part of the Budget and Policy Framework for the Council, as set out in Part Four of the Council's Constitution. Consequently, Scrutiny was statutorily involved in the process prior to the draft Final Report being submitted to Council in April 2006.

Since the beginning of September 2005 officers of the Children's Services Department had been engaged in discussions with a wide range of partners and other interested parties in the development of a first consultative draft of the CYPP, published on 16th November 2005. The consultation period on this first draft plan would run until 16th December 2005, leading to the production of a second draft plan in January 2006. Cabinet would meet in mid-January 2006 to consider the second draft and following the meeting the second draft CYPP would be sent to the Children's Services Scrutiny Forum for consideration. Public consultation on this document would begin on 25th January 2006 and end on 27th February 2006 and it was hoped that the results of this consultation would be fed into the meeting of the Forum on 7th March 2006.

Members were reminded that this was the first time a CYPP had been produced by the Authority and the Government expects that the CYPP should evolve over its first years of existence. This would be reflected in Hartlepool as the Children's Services Department works ever more closely with partner organisations. Members were also asked to note that, given this was the first year CYPPs were being developed across the country, best practice would also develop over time.

The proposed terms of reference for the inquiry, were outlined in the report, as follows:-

- 1) To consider the appropriateness of the proposed format of the CYPP in relation to the:-
 - a) Full version;
 - b) Summary for adults;
 - c) Summary for young people (This is being prepared with and for young people and because proper engagement and consultation with young people takes a significant amount of time, this may not be complete until the third draft stage. It may not, therefore, be completed in time for Scrutiny to examine it); and
 - d) Availability in other formats.

- 2) To consider and comment on the key aspects of the content of the draft CYPP, in particular:-
 - a) The accuracy of the section on the Hartlepool context;
 - b) The appropriateness of vision statements and key principles; and
 - c) The relevance of the priorities identified in the section dealing with the five Every Child Matters outcomes ('Be Healthy', 'Stay Safe', 'Enjoy and Achieve', 'Make a Positive Contribution', and 'Achieve Economic Well-Being').

During the Scrutiny Investigation Members should be aware that, although the responsibility for preparing and publishing the plan lies with the Local Authority, the CYPP is a joint plan, which is being developed in partnership. Consequently, the CYPP will reflect a range of agreements between those involved in the process.

Potential areas of inquiry / sources of evidence - Given the tight timescales for this inquiry the Forum were asked if they wished to consider evidence provided by the Children's Services Consultant who is the Temporary Lead on the Preparation and Publication of the CYPP.

The proposed timetable of the scrutiny investigation, as detailed in the report, was as follows:

7th February 2006 – Evidence to be provided by the Children's Services Consultant: Temporary lead on the preparation and publication of the CYPP.

7th March 2006 – Any further evidence requested by the Forum to be presented to this meeting. In addition, the Forum must agree a draft final report for submission to Scrutiny Co-ordinating Committee on 10th March 2006 and Cabinet on 29th March 2006.

The report also indicated that it may be possible to arrange an additional meeting between 7th February and 7th March 2006 if Members feel that this is necessary.

Decision

Members agreed the remit of the Scrutiny investigation as outlined in the report.

JANE SHAW

CHAIRMAN

CHILDREN'S SERVICES SCRUTINY FORUM REPORT

Tuesday 7th February 2006



Report of: Portfolio Holder for Adult and Public Health Services

Subject: ADULT LEARNING INSPECTION

1. PURPOSE OF REPORT

- 1.1 To inform Members of this Forum of the decision of the Adult and Public Health Services Portfolio Holder in relation to the Adult Learning – Final Report by Children's Services Scrutiny Forum.

2. BACKGROUND

- 2.1 On 21st April 2005 the (then) Culture and Learning Scrutiny Forum examined the inspection results of Hartlepool's Adult Education Service, during its last meeting of the 2004/05 Municipal Year. Members of the Forum were keen to explore this issue given the poor inspection results the service had received in March 2004.
- 2.2 Having explored the issue with the Adult Education Co-ordinator on 21st April 2005, Members of the Forum determined that they would like one further meeting to explore this issue once the re-inspection of the Adult Education Service had taken place in May 2005. It was agreed at the meeting on 21st April 2005 that the Forum should:
- (a) Seek to make recommendations to the Portfolio Holder strongly supporting Adult Learning. Prior to doing this the Forum should explore the funding criteria of Adult Education Services as a basis for taking this matter to the Portfolio Holder.
 - (b) Discuss this matter with a representative from the Learning and Skills Council (LSC) to clarify the basis of its current and future funding policies for Adult Education in Hartlepool compared with the other authorities within its responsibility; and
 - (c) Consider the importance of the contribution of Adult Education to the Authority's social inclusion objectives.

- 2.3 Since the Forum first looked at this matter the remit of the Forum changed to Children's Services, which means that the scrutiny topic now falls outside of its remit. However, when the Forum determined its work programme on 5th July 2005 it was agreed that this item should remain with this Scrutiny Forum because of the work carried out in the previous municipal year. This approach was agreed by the Scrutiny Co-ordinating Committee on 5th August 2005.
- 2.4 Consequently, on 30th August 2005 the following reports were presented to the Forum:
- (a) Re-inspection of the Adult Education Service – Adult Education Co-ordinator (HBC);
 - (b) Future funding of Adult Education – Adult Education Co-ordinator (HBC); and
 - (c) Reforming the Funding and Planning Arrangements for First Steps and Personal and Community Development Learning for Adults – Senior Learning Advisor (Learning and Skills Council).
- 2.5 During discussions Members reached the following conclusions about Adult Learning:
- (a) Members noted the 'Re-inspection of the Adult Education Service' report and presentation and commented that there appeared to have been a dramatic improvement in a short space of time. Without wishing to take anything away from the work undertaken by staff, Members commented that the first inspection had possibly been too severe;
 - (b) That the Adult Services and Public Health Portfolio Holder be advised that it is this Forum's view that Adult Education is vital to the Town, especially in community areas and in local venues where people can feel comfortable in the learning environment; and
 - (c) That Scrutiny Co-ordinating Committee be requested to arrange for the Adult and Community Services Scrutiny Forum to receive future updates from the Senior Learning Advisor of The Learning and Skills Council.
- 2.6 The contents of this report were approved by the Children's Services Scrutiny Forum on 25th October 2005 and Scrutiny Co-ordinating Committee on 14th November 2005.

3. PORTFOLIO HOLDER RESPONSE

- 3.1 On 12th December 2005 the Children's Services Scrutiny Forum's Final Report on the Adult Learning Inspection was reported to the Portfolio Holder for Adult and Public Health Services.
- 3.2 In response to the Scrutiny Forum's recommendations the Portfolio Holder:

- (a) agreed the findings and recommendations of the report, and
- (b) asked it to be noted that in light of the impending announcement from the Learning and Skills Council, in the form of the document “Future of Post 19 Funding”, Scrutiny may wish to look at the future configuration of Adult Learning services.

4. RECOMMENDATIONS

- 4.1 That Members note the contents of the report.

CHILDREN'S SERVICES SCRUTINY FORUM REPORT

7th February 2006



Report of: Director of Children's Services

Subject: SCRUTINY OF THE SECOND DRAFT OF THE
CHILDREN AND YOUNG PEOPLE'S PLAN

1. PURPOSE OF REPORT

- 1.1 To invite members to comment on the second draft of the Children and Young People's Plan (attached as Appendix 1).

2. BACKGROUND

- 2.1 Hartlepool Borough Council has a new duty under the Children's Act 2004 to prepare and publish a Children and Young People's Plan in co-operation with key partners. This item forms part of the Budget and Policy Framework for the Council, as set out in Part Four of the Council's Constitution. Consequently, Scrutiny is statutorily involved in this process prior to the draft Final Report being submitted to Council in April 2006.
- 2.2 Since the beginning of September 2005 officers of the Children's Services Department have been engaged in discussions with a wide range of partners and other interested parties in the development of a first Children and Young People's Plan for Hartlepool. A first draft of the Plan was produced in November 2005 and consultation was undertaken from mid November until mid December. A second draft of the Plan was produced in January 2006, following careful consideration of all issues raised during the initial consultation period.
- 2.3 The second draft of the Children and Young People's Plan was considered by Cabinet on 24th January 2006. Cabinet agreed to refer the draft Plan to Children's Services Scrutiny Forum.
- 2.4 Cabinet also agreed that the draft Plan could be subject to a second round of consultation, from 24th January until 21st February 2006. If it is the wish of Members, the outcomes of consultation could be reported to the Forum at their meeting on 7th March 2006. This would enable Members to comment on the draft Plan in light of the outcomes of consultation. Members of the Forum would thereby have an opportunity to influence directly the third and final draft, for consideration by Cabinet on 29th March and full Council on 13th April 2006.

- 2.5 Members should be aware that the second draft of the Children and Young People's Plan has been heavily influenced by the views of children and young people. Officers intend to focus even more on hearing the views of the children and young people of Hartlepool during the second round of consultation, with the intention that the final version of the Plan fully reflects the needs and aspirations of children and young people. A major consultation event will be taking place at the Mayfair on 9th February and Members of the Forum are invited to attend for any part of the day. Further details are available from Ann Breward, 4th Floor Civic Centre, by telephoning 524337 or email to ann.breward@hartlepool.gov.uk

3. OVERALL AIM OF THE SCRUTINY INVESTIGATION

- 3.1 For the Children's Services Scrutiny Forum to comment on the draft Children and Young People's Plan as part of the Budget and Policy Framework process for this item.

4. TERMS OF REFERENCE FOR THE SCRUTINY INVESTIGATION

- 4.1 Outlined below are the terms of reference for the inquiry:-

- 1) To consider the appropriateness of the proposed format of the CYPP in relation to the:-
 - a) Full version as presented in the Appendix attached to this report
 - b) Summary for adults. This now appears as Section 1 of the attached Appendix
 - c) Summary for young people (This is being prepared with and for young people and because proper engagement and consultation with young people takes a significant amount of time, this will not be complete until the third draft stage; and
 - d) Availability in other formats. Members are invited to recommend a number of additional formats in which the Plan should be presented in April 2006.
- 2) To consider and comment on the key aspects of the content of the draft CYPP, in particular:-
 - a) The accuracy of the section on the Hartlepool context (Pages 7 & 8)
 - b) The appropriateness of vision statements and key principles (Pages 6 & 7); and
 - c) The relevance of the priorities identified in the sections dealing with the five Every Child Matters outcomes: 'Be Healthy' (Page 9); 'Stay Safe' (Page 10); 'Enjoy and Achieve' (Page 11); 'Make a Positive Contribution' (Page 12); and 'Achieve Economic Well-Being' (Page 13).

- 4.2 During the Scrutiny Investigation Members should be aware that, although the responsibility for preparing and publishing the Plan lies with the Local Authority, the Children and Young People's Plan is a joint plan, which is being developed in partnership. Consequently, the Plan will reflect a range of agreements between those involved in the process.

5. RECOMMENDATIONS

- 5.1 Members are recommended to comment on the second draft of the Children and Young People's Plan.

Contact Officer: Adrienne Simcock

Director of Children's Services

Hartlepool Borough Council

Tel: 01429 523734

Email: Adrienne.simcock@hartlepool.gov.uk



CHILDREN AND YOUNG PEOPLE'S PLAN

A Strategic Plan for the Provision of Services to the
Children and Young People of Hartlepool

April 2006 – March 2009

**SECOND CONSULTATIVE DRAFT
JANUARY 2006**

INDEX

Foreword	3
Part 1	
Introduction and Executive Summary	4
Introduction	5-8
Summary of Key Outcomes	9-13
Part 2	14-25
Be Healthy	
Part 3	26-34
Stay Safe	
Part 4	35-50
Enjoy and Achieve	
Part 5	51-59
Make a Positive Contribution	
Part 6	60-74
Achieve Economic Well-being	
Part 7	75-80
Supplementary Information	
Appendices	
Appendix 1 – Bookcase	81
Appendix 2 – Glossary of acronyms used in this Plan	82

Foreword

A foreword will appear here at final (third) draft stage, with contributions from the Children's Services Portfolio Holder, the Director of Children's Services and a representative of the children and young people of Hartlepool.

CHILDREN AND YOUNG PEOPLE'S PLAN

A Strategic Plan for the Provision of Services to the
Children and Young People of Hartlepool

April 2006 – March 2009

PART 1

INTRODUCTION AND EXECUTIVE SUMMARY

DRAFT 2 JANUARY 2006

Introduction

The Children and Young People's Plan is about improving the lives of our young people in Hartlepool. They face great opportunities and pressures and we believe that by working together we can improve their lives both now and into the future.

The responsibility for preparing and publishing a Children and Young People's Plan is given to the Local Authority by the Children Act 2004. The Local Authority is required to "promote cooperation" between itself and its key partners. This Children and Young People's Plan is the over-arching strategic Plan that will cover all services available to the children and young people of Hartlepool. Its main aim is to ensure that all partners engaged in providing services for children and young people do so in a coordinated way. In the preparation of this Plan, Hartlepool partners have begun to work even more closely together and will continue to do so as this three-year rolling Plan is reviewed and refreshed.

There has been agreement nationally on the five outcomes that really matter to the lives of children and young people and these are now law in the Children's Act 2004. The five outcomes are:

- Be Healthy
- Stay Safe
- Enjoy and Achieve
- Make a Positive Contribution
- Achieve Economic Well-being

Be Healthy refers to physical, mental, emotional and sexual health, with an emphasis on healthy lifestyles and making positive choices not to take drugs. In terms of how significant these issues are in Hartlepool, indicators include rates of: infant mortality, suicide, obesity, teenage pregnancy, alcohol misuse, smoking and use of Class A drugs.

Stay Safe refers to being safe from maltreatment, neglect, sexual exploitation, accidental injury and death, bullying and discrimination, crime and anti-social behaviour. In terms of how significant these issues are in Hartlepool, indicators include rates of: child protection registrations, road traffic deaths and injuries, Looked After children placements.

Enjoy and Achieve refers to being ready for school, attending and enjoying school, achieving high standards at primary and secondary stages of education, personal and social development and recreation. In terms of how significant these issues are in Hartlepool, indicators include rates of: children's development at Foundation Stage, school absence, school performance, take up of sport and cultural opportunities, achievements of Looked After children.

Make a Positive Contribution refers to the engagement of children and young people in decision making and community support activities, positive and law abiding behaviour, developing positive relationships and self-confidence and dealing with change and enterprise. In terms of how significant these issues are in Hartlepool, indicators include: activities of school councils, incidence of voluntary work in the community, reductions in offending, exclusions, bullying and discrimination and self employment.

Achieve Economic Well-being refers to engagement in further education, employment or training, being ready for employment, living in decent homes and communities, being free from low income and having access to transport and material goods. In terms of how significant these issues are in Hartlepool, indicators include rates of: young people not in education, employment or training (NEET), Level 2 qualifications and higher education participation.

This Children and Young People's Plan identifies the high level strategic priorities for the next three years (2006-2009). A number of subordinate operational plans provide the detail of how these strategic priorities will be implemented. The relationship of the Children and Young People's Plan to these subordinate plans is shown in the "Bookcase" diagram in Appendix 1. It is important that **all** children and young people benefit from the Plan. This includes those children and young people who use mainly universal services; these are services everyone uses such as maternity services at birth and schools when children get older. Some children and young people need extra support such as if a child has a disability or is fostered. To ensure that this support is available, some themes are tackled in each outcome such as Looked After children and young people and those with Special Educational Needs and disabilities.

This Plan is not meant to cover everything, but to concentrate on making things better.

Vision

Our vision is that by enabling all children and young people to achieve their full potential, they will have the confidence and ability to enjoy a fruitful and successful life. Our over arching aim is to achieve the best outcomes for all children and young people so that they are healthy and safe, they enjoy themselves and achieve well, they make a positive contribution and they are helped to achieve economic well being. Services to children and young people in Hartlepool should be organised in such a way that they will help all our young people achieve their full potential and maximise their chances in life by providing integrated provision which is of high quality, effective and excellent value for money.

We believe that services for children and young people should be coherent, easily accessible and responsive to needs. Families can best meet the needs of their children when services are locally delivered and available at the right time. The integration of services for children and young people in settings such as children's centres and extended schools is critical in the delivery of this vision. We believe that targeted support may be needed at all ages and stages of a particular young person's development and that early and effective intervention can reduce barriers that prevent success.

This vision is underpinned by some key principles:

- Children and young people, together with parents or carers and other members of the community, are consulted and participate in the identification of local needs and shaping of service delivery;
- Children and young people have access to equitable universal services, alongside targeted and specialist services and these are delivered flexibly to meet individual and local needs;
- There is a shared commitment to integrated working practices which are designed to promote the delivery of the five outcomes for children and young people;
- There is a commitment to partnership working between all stakeholders from both the statutory and community and voluntary sectors;
- Resourcing, planning and commissioning are effective and help to develop sustainable services;
- Evidence based practice is used to develop high quality continuous improvement through monitoring and evaluation;
- Inclusion, both social and educational, together with the recognition of diversity, is central to the Children and Young People's Plan.

The multiple nature of the social problems experienced by a large proportion of the population means that a partnership approach is essential if improvements are to be maintained. The Children and Young People's Plan further contributes to the working arrangements and supports the Hartlepool Partnership's long-term vision:

“A prosperous, caring, confident and outward looking community, realising its potential in an attractive environment.”

And its goal:

“To regenerate Hartlepool by promoting economic, social and environmental well-being in a sustainable manner.”

The Children and Young People’s Plan also contributes to the Council’s overall aim, which is:

“To take direct action and work in partnership with others, to continue the revitalisation of Hartlepool life and secure a better future for Hartlepool people”.

Priorities for children and young people are embedded in the Hartlepool Community Strategy and aim to help “all individuals, groups and organisations realise their full potential, ensure the highest quality opportunities in education, lifelong learning and training, and raise standards of attainment.” The aim of the Health and Social Care theme is to “ensure access to the highest quality health, social care and support services, and improve the health, life expectancy and well-being of the community.

Context

Hartlepool, a compact and densely populated town, is located on the North East coast at the North Eastern end of the Tees Valley. The population is largely concentrated in the urban area, although the Borough as a whole (9,386 hectares) is predominantly rural, with some distinct villages and attractive countryside. Overall, the population of 90,161 (2003) is projected to decline slightly over the next ten years, with older age groups increasing and younger age groups reducing. The 0-19 age group represent 27% (24,269) of the population which is above the national average (23%), although this is projected to fall by over 12% over the next 13 years. The ethnic minority population is low (1.2%) but significant.

According to the 2004 Index of Multiple Deprivation (IMD), eight out of Hartlepool’s seventeen wards are among the top 10% most deprived in England, with five of these wards being in the top 3%. Unemployment in July 2005 stood at 4% (2,176 people), compared to 4.7% nationally (August, 2005). The 2001 census indicated that 60.1% of households (22,684) had a car, 8.7% (3,234) were single parent families and 21.4% (7,986) were households with dependant children.

A quarter (24.4%) of Hartlepool’s residents identified themselves as having a limiting long-term illness in the 2001 Census, compared to less than one in five nationally (18.2%). Hartlepool males on average live 2.8 years less than the English average and females live 2.6 years less. There are wide variations in life expectancy in Hartlepool between council wards. For males the difference between the best and worse is 13.3 years and for females 11.8 years.

In Hartlepool, in 2005, there were:

- 606 children in need receiving social care services
- 125 looked after children
- 101 children on the child protection register
- 447 children with a statement of special educational needs

There are six secondary schools, 31 primary schools and 2 special schools in Hartlepool catering for 1,275 nursery children, 8,160 primary pupils and 6,347 secondary pupils. Of these 2.9% had a statement of special educational needs in 2005, which is in line with national averages. Attendance in primary schools is in line with the national average at 94.7% in 2005. In secondary schools it was 92.7%, which is also in line with national

averages (92.18%). 23.5% of primary pupils and 18.9% of secondary pupils were eligible for a free school meal; both figures are in line with national averages.

The proportion of 16-19 year olds in education or training is good and the number of young people classified as Not in Education, Employment or Training (NEET) is below that of statistical neighbours. The number of young people classified as NEET has fallen from 14.3% in 2004 to 9.8% in 2005.

Teenage pregnancy rates in Hartlepool are high (68 per 1000 females under 18 years in 2001) in comparison with the national average (44.1 per 1000) as well as regional comparators. The most recent data for under 16 conception rates of 8.1 per 1000 demonstrates a 48% reduction on the 1998 baseline and compares well with the national rate of 7.9. However, this data needs to be treated with caution, due to the small numbers involved, and any slight increase will have a significant effect on the rates.

In 2004 the number of criminal offences committed by young people for which there was a substantive outcome rose to 602, an increase of 2 from the previous year. 350 young people offended in 2004 which represents 3.4% of the 10-17 years population. During the same period re-offending reduced from 61% to 56%.

Preparation of the Plan

The process of drafting the first Children and Young People's Plan for Hartlepool began formally with a Launch Seminar at Hartlepool Maritime Experience on 7th September 2005. Almost eighty people attended, representing the Borough Council, individual partners and partner organisations. These included Cleveland Police, the Voluntary and Community Sector, Diocesan Authorities, Health Authorities and Trusts, the Learning and Skills Council, the private sector, schools, colleges, trade unions, Hartlepool's UK Youth Parliament Member, and Hartlepool's Member of Parliament,

After the Launch Seminar a number of reference groups were established. Views expressed at the launch event, at Reference Group meetings and by individuals contributed to the first draft of the Plan, produced in November 2005. The draft Plan received wide publicity. Extensive consultation on the first draft followed, including further meetings of Reference Groups, a Road Show, Neighbourhood Forum Meetings and Parent Focus Groups. This led to the production of a second draft in January 2006. The second draft was considered by Hartlepool's Cabinet and Children's Services Scrutiny Forum and was subject to a second round of consultation during February 2006 leading to final agreement by the Council in April 2006. At the same time, partner organisations are consulting on the Plan and seeking agreement through their own governance arrangements.

The involvement of children and young people has been crucial to the preparation of this Plan. We are extremely grateful to Hartlepool's UK Youth Parliament Member for support throughout the process. We have established a young people's reference group and have begun to support the participation of children and young people through their daily contacts with statutory, voluntary, community and private sector organisations, providing them with a first opportunity to consult. This has enabled some engagement with a wide range of children and young people including those that we sometimes experience difficulty relating to. We are satisfied that this process, and the proposed follow up from it, will highlight our intent to put the views of children and young people at the centre of our planning. A number of children and young people will also help to produce a children and young people's version of the final Plan; this will be available separately in April 2006.

We are rightly proud of our involvement with young people in the preparation of the Plan and see this relationship developing in the future, ensuring the effective involvement of young people in the monitoring and review process and the future development of services.

Summary of Key Outcomes

This next part of the Plan is subdivided into each of the five outcome areas for children and young people and gives an overview of the Current Position, Key Priorities and Main Success Criteria for each outcome.

The summary aims to identify the most significant issues to be addressed during the life of the Plan.

In order to access all relevant information relating to an outcome area, please refer to the appropriate individual outcome part.

BE HEALTHY

Current Position (from Annual Performance Assessment (APA) May 2005)

Overall, local services make a good contribution to improving children and young people's health. Services consistently deliver well above minimum requirements for children and young people. There are examples of innovative practice in relation to:

- Smoking cessation, as Hartlepool Primary Care Trust (PCT) had the highest quit success rate in the area;
- Care Coordination for children with severe disabilities which has received very positive feedback from parents.

Key Priorities

- Further improve the reduction in teenage conception rates;
- Engage in further discussion with partner agencies regarding Child and Adolescent Mental Health Services (CAMHS);
- Further explore the opportunity to extend the care co-ordination process beyond the pre school years.

Main Success Criteria

- Reduction in teenage pregnancy conception rate;
- Increased partnership working for children and young people with complex, persistent and severe behavioural disorders;
- Increase in the number of children with disabilities in the care co-ordination process.

STAY SAFE

Current Position (from APA May 2005)

Overall, local services make a good contribution to ensuring that children and young people in Hartlepool remain safe. Services consistently deliver above minimum requirements for children and young people. There are examples of innovative practice in relation to:

- Provision of a therapeutic service for children and young people;
- A Local Safeguarding Children's Board (LSCB) has already been established.

Key Priorities

- Develop partnership arrangements to address the concerns of children and young people about bullying;
- Agree actions with partners in order to increase safety on the streets, thereby reducing the incidence of street crime /assaults etc. (No data available for this draft);
- Develop a multi-agency training plan to meet the needs of all staff and volunteers who work with children in any setting in Hartlepool;
- Develop the work of the Local Safeguarding Children Board to encompass the wider remit of Safeguarding while maintaining a strong emphasis on Child Protection;
- Improve the way that referrals and core assessments are measured;
- Explore the reasons why more initial child protection conferences occur in Hartlepool than in similar councils;
- Improve the percentage of looked after children for more than 4 years who have been in the same foster placements for 2+ years;
- Improve the number of children adopted during the year and the percentage of looked after children adopted during the year placed within 12 months of best interest decision being made.

Main Success Criteria

- Reduction in percentage of 11 – 15 year olds who state they have been bullied in the last 12 months;
- Reduction in percentage of children and young people expressing concern about fear of crime and anti-social behaviour (to be confirmed with partners);
- Delivery of a multi-agency training plan;
- Compliance with Local Safeguarding Children Board Child Protection Procedures and requirements;
- Reduction in numbers of initial and core assessments;
- Reduction in numbers of Initial Child Protection Conferences following child protection enquiries;
- Improvement in long-term stability for looked after children;
- Increase in number of looked after children who are adopted.

ENJOY AND ACHIEVE

Current Position (from APA May 2005)

Overall, local services make a very good contribution to children and young people enjoying and achieving. Nearly all services consistently deliver above minimum requirements and some, such as early years and provision 5-16, deliver well above. Innovative practice is evident and outcomes are generally improving.

Key Priorities

- Improve the performance of children and young people across all key stages, but in particular Key Stage 1, Key Stage 3 English, science and ICT and Key Stage 4 English and maths;
- Improve the performance of boys across all key stages but especially at Key Stage 3 where the gap is widest;
- Increase the number of excluded pupils who are successfully reintegrated into mainstream settings;
- Improve the performance of Looked After Children and Young People;
- Work more closely with partners, including the voluntary sector, in order to improve the quality and range of recreational activities for children and young people in school and other settings.

Main Success Criteria

- Performance at Key Stage 1 (% of 7 year olds achieving Level 2 or above) increases faster than the national rate. National averages are achieved by 2008.
- Performance at Key Stage 3 (% of 14 year olds achieving Level 5 or above) improves faster than the national rate in English, science and ICT. Targets agreed with DfES are achieved and national average reached by 2009.
- Percentage of 16 year olds achieving grade A*-G and A*-C increases in English and mathematics. National averages are reached by 2010.
- Percentage of excluded pupils reintegrated into mainstream settings increases*.
- Performance of Looked After Children (LAC) improves. National expected targets achieved by 2010. All LAC make better than expected progress (positive value added).

* data will be available for next draft.

MAKE A POSITIVE CONTRIBUTION

Current Position (from APA May 2005)

Overall, local services make a good contribution to enabling children and young people to make a positive contribution. Services consistently deliver above minimum requirements for children and young people. There are examples of innovative practice in relation to:

- Post-19 support for young people with special education needs. Joint working between the local further education (FE) college and special school has resulted in specific services being targeted on this group.
- appointment of vulnerable pupils' coordinator for mobile pupils, looked after children, children from ethnic minorities, children with English as an additional language (EAL) and travelling children.
- Hartlepool Ethnic Minority Achievement Team target support for children from black and ethnic minorities.
- Behaviour and Education Support Team (multi-agency) provides emotional literacy programmes for schools.
- young people in care are involved in the recruitment of social care staff.
- Children's Fund supported the development of a video ('Totally Different') involving local black and minority ethnic community.

Key Priorities

- Ensure we review procedures that are in place to tackle bullying;
- Develop clear links between participation processes for children and young people, service providers, the Children and Young People's Strategic Partnership and the local political process; this will include further development of school councils as well as seeking opportunities to engage with children and young people outside of mainstream services;
- Continue to divert children and young people away from anti social behaviour and crime, through further development of preventative services;
- Continue to focus on ensuring that positive outcomes are achieved for looked after children by placing them at the centre of the planning process;
- Ensure that all children and young people have access to services that support the development of self-confidence, self worth and emotional resilience and that enable them to face significant life changes and challenges with appropriate support;
- Continue to find innovative ways to engage with and involve children from black and minority ethnic communities in service development;
- Prevent re-offending and support victims of crime;
- Develop further the process for involving looked after children in their reviews and planning for their future;
- Develop effective transition arrangements for young people moving from children's to adult care.

Main Success Criteria

- Increase in percentage children in secondary schools participating in elections;
- Reduction in numbers of children and young people committing offences;
- Reduction in numbers of permanent and fixed term exclusions;
- Ensure that a participation strategy is in place;
- Increase in percentage of children and young people who are looked after taking part in their reviews;
- Ensure that procedures for children and young people moving from children's to adult care are in place.

ACHIEVE ECONOMIC WELL-BEING

Current Position (from APA May 2005)

Overall, services to children and young people that contribute and support them to achieve economic well-being are good. For 14-19 and Special Educational Needs (SEN), some services consistently deliver above minimum requirements. There is some innovative practice which is cost-effective and makes a good contribution to the wider outcomes for the community. In relation to children and young people who are looked after, services are satisfactory with some good features.

Key Priorities

- Reduce the number of young people classified as not in education, employment or training (NEET);
- Improve the number of young people engaged in education, employment or training from disadvantaged groups;
- Increase the number of young people having the opportunity to access higher education;
- Implement the 14-19 Operational Plan;
- Improve the quality of housing to meet the Decent Homes Standard .

Main Success Criteria

- Increase in the proportion of 16–19 year-olds in education or training;
- Reduction in the proportion of 16–18 year-olds not in education, employment or training (NEET);
- Improvement in the retention and success rates for 16, 17 and 18 year-olds on education and training programmes;
- Improvement in the progression rates of young people into further and higher education, training and employment;
- Improvement in the proportion of 19 year olds with qualifications at Level 2 or above;
- Reduction in the proportion of dependent children who live in a home that does not meet the set standard of decency;
- Increase in the proportion of child benefit recipients claiming child tax credit;
- Reduction in the proportion of children living in households where no one is working;
- Increase in the involvement of looked after children in education, employment and training post 16
- Reduction in the proportion of care leavers who become homeless;
- Reduction in the proportion of children and young people with learning difficulties and/or disabilities not in education, employment or training;
- Increase in the number of families who take up direct payments .

CONCLUSION

Part 7 of this Plan provides supplementary information on the purpose of Hartlepool's Children and Young People's Strategic Partnership, the development of a Children's Trust, the development of a Local Area Agreement and the development of a workforce strategy to underpin the Plan.

Detail is also give on arrangements for monitoring and evaluating the Plan and information is provided on how to comment on the Plan and how to access it electronically.

The key contact for this Plan, within the Children's Services Department of Hartlepool Borough Council, is Ian Merritt. Ian can be contacted as follows:

Telephone: 01429 523774
Email: ian.merritt@hartlepool.gov.uk

CHILDREN AND YOUNG PEOPLE'S PLAN

A Strategic Plan for the Provision of Services to the
Children and Young People of Hartlepool

April 2006 – March 2009

PART 2

BE HEALTHY

DRAFT 2 JANUARY 2006

OUTCOME: *Be Healthy*

Our vision for this outcome in Hartlepool is that children and young people will be physically, mentally, emotionally and sexually healthy, lead healthy lifestyles and choose not to take illegal drugs.

Children and young people tell us:

- that they are aware of the need to be healthy; as one young person noted in feedback from recent consultation - "Being healthy gives me the ability to cope with everyday routine".
- that they are aware of the importance of **fitness and exercise**, particularly in relation to taking part in sport, being healthy enough to work, living life to the full and living longer.
- that they acknowledge that it is important to have a good, balanced **diet**, to drink plenty of water and to have access to healthy foods.
- that they feel very strongly about the issue of **drug taking**, but that of equal concern were the problems of alcohol abuse and cigarette smoking.

Parents / carers and partners tell us:

- that **fitness** is an important issue but that they felt that there was a lack of things to do and that more planned activities were needed to encourage children and young people to become fitter and healthier. One respondent to consultation said that there should be more "Opportunities to take part in exercise and activity out of school to promote leisure/social development as a long term benefit to physical and mental well-being".
- that there is a major issue in the use of the term **substance misuse**, which is considered to be misleading as it covers drug taking as well as alcohol abuse. Through their experience of working in communities, they suggest that there is more prevalence of alcohol misuse than drug abuse in Hartlepool. In addition there are concerns about groups of young people drinking together, on school fields, street corners etc.
- that there should be a strong focus upon children and young people's emotional health.
- that there needs to be a focus on sex and relationships education and services around teenage pregnancy.

The Government's National Priorities are:

1. Ensure that parents and carers receive support to keep their children healthy.
2. Ensure that healthy lifestyles are promoted for children and young people.
3. Take action to promote children and young people's physical health.
4. Take action to promote children and young people's mental and emotional health.
5. Ensure looked after children's health needs are assessed.
6. Ensure the health needs of children and young people with learning difficulties and /or disabilities are addressed.

Our own assessment tells us:

In relation to physical health:

- that participation in sport is an important part of educating children and young people in the benefits of exercise. All Hartlepool schools are responding well to this national target with 57% of primary schools being judged as very good and 42% being judged as good and 100% of secondary schools being judged as very good. However, only 7 primary and 1 secondary schools were inspected, so these judgments may not be reflective of all schools in Hartlepool.

In relation to mental and emotional health:

- that there is currently 1.3 full time equivalent Social Worker input into CAMHS, which whilst low, reflects the size of the local authority area and the population it serves.
- that overall the response from the Child and Adolescent Mental Health Services (CAMHS) to young offenders is improving.

In relation to sexual health:

- that although the teenage pregnancy rate is up slightly overall, figures continue to fall (68 per 1000 females under 18 years in 2001) (national average 44.1 per 1000). Hartlepool continues to address this issue through its Teenage Pregnancy Strategy and linked services. In the last few years the implementation of the strategy has been successful in reducing the conception rates by putting a number of services in place, for example access to contraceptive and sexual health services.
- that as part of the National Healthy Schools Programme (NHSP), schools are expected to implement sex and relationships education. 100% of both primary and secondary schools in Hartlepool have responded well to all aspects of the National Healthy Schools Programme (NHSP) and are deemed as very good.

Things we do well:

- Have good partnerships in place to promote healthy lifestyles.
- Have a high percentage of schools taking part in the Healthy Schools Initiative with 15 out of 22 designated target schools achieving healthy school status. 100% of primary schools are part of the national fruit and vegetable scheme.
- Actively promote physical education and sport, with good provision of sporting activities.
- Have good access to health services for looked after children; 88.8% of looked after children have received a health assessment.
- Have good drug education training and resources in place for school staff.
- Whilst the teenage conception rate has shown a recent increase, the figures vary year on year and there has been an overall downward trend recorded over a period of time. Work is also progressing to further develop sex and relationships training within schools.
- Have a care co-ordination service in place to provide essential and co-ordinated services to children with severe disabilities and their families.

To continue to improve we will:

- ensure that we strengthen our partnership working to work towards more integrated services.
- ensure that health inequalities are reduced by improving the targeting of vulnerable infants, children and young people through, for example, Healthy Schools and a more coordinated response in terms of Domestic Violence.
- ensure that the conception rates for teenagers continue to reduce.
- ensure that we carry on working with schools to achieve the new National Healthy School Status.
- ensure that we work closely with our partners within the local health services to make sure that the National Service Framework (NSF) for Children, Young People and Maternity Services complements the work of the Every Child Matters agenda.
- ensure that all looked after children continue to get the relevant access to health services that they need.
- appoint a Care Coordinator to take forward and further develop the care co-ordination process for those children with severe disabilities.

Things we can do better are:

- Further improve the reduction in teenage conception rates.
- Further discussion needs to take place with partner agencies regarding Child and Adolescent Mental Health Services (CAMHS).
- Further explore the opportunity to extend the care co-ordination process beyond the pre school years.

In order to do our best for all children and young people we will deliver the national priorities and contribute to the delivery of the Hartlepool Community Strategy. In particular we will:

- continue to work in partnership with schools to help them achieve the new National Healthy School Status requirements.
- develop a "Healthy Food in School Strategy" in response to the "Turning the Tables - Transforming School Food".
- develop and implement the Common Assessment Framework and Lead Professional Role.

In recognition of the additional needs of some young people we will:

In relation to children with disabilities:

- ensure that all children with disabilities aged 14+ have a transition plan to support their move to Adult Services.
- ensure that all children with disabilities have fair and equal access to universal health services.

In relation to looked after children:

- ensure that looked after children continue to get improved access to all relevant health services to increase or maintain their good health.
- ensure that looked after young people leaving care have adequate access to universal health services.

In relation to children from black and ethnic minority communities:

- ensure that all children and young people from the black and minority ethnic communities have equality of access to all services.

PLAN				
Priority Reference	Actions	Timescale	Responsible Organisation	Linkages
BH 1.1	Parents and carers receive support to keep their children healthy			
1.1.1	Provide timely and consistent information and provide relevant support to promote the positive benefits of breastfeeding.	2006 - 2010	North Tees and Hartlepool NHS Trust Hartlepool Primary Care Trust	Teenage Pregnancy Strategy
1.1.2	Promote healthy diets for pregnant mothers (inc. Healthy Start).	2006 - 2010	North Tees and Hartlepool NHS Trust Hartlepool Primary Care Trust	Teenage Pregnancy Strategy
1.1.3	Address the 'Hidden Harm' agenda, particularly in relation to integrated working and provide effective co-ordination of services in relation to substance misusing parents.	2006 – 2009	Assistant Director (Safeguarding and Specialist Services)	Local Safeguarding Children Board Plan
1.1.4	Launch and provide training of the multi-agency assessment tool for substance misusing parents.	2006 – 2009	Assistant Director (Safeguarding and Specialist Services)	Local Safeguarding Children Board Plan Child Protection Training
1.1.5	Parents and carers are informed about preventative and treatment provision for their children and are encouraged to ensure that proper use is made of each.	2006 - 2009	Hartlepool Primary Care Trust (PCT)	Strategic Service Development Plan

Priority Reference	Actions	Timescale	Responsible Organisation	Linkages
1.1.6	Educational programmes are provided to help current and future parents and carers understand the emotional needs of children and young people.	2006 - 2009	Hartlepool Primary Care Trust (PCT)	Strategic Service Development Plan
1.1.7	Domestic violence project under Local Public Service Agreement (LPSA) II agreed and implemented.	2006 – 2008	Assistant Director (Safeguarding and Specialist Services)	Local Public Service Agreement (LPSA) II Local Area Agreement Local Safeguarding Children Board
1.1.8	Parents feel confident and skilled in talking to their children about sex and relationships.	2006 - 2008	Assistant Director (Performance and Achievement) Hartlepool Primary Care Trust (PCT)	National Healthy Schools Programme Teenage Pregnancy Strategy
1.1.9	Teenage parents have access to post natal services tailored to their needs to improve the physical and mental health outcomes for them and their children.	2006 - 2008	Hartlepool Primary Care Trust (PCT) North Tees and Hartlepool NHS Trust	Teenage Pregnancy Strategy
1.1.10	Support for young parents experiencing Domestic Violence.	2006 – 2008	Hartlepool Primary Care Trust (PCT) North Tees and Hartlepool NHS Trust	Teenage Pregnancy Strategy Local Safeguarding Children Board
1.1.11	Support for young parents to help their children thrive and develop.	2006 - 2008	Hartlepool Primary Care Trust (PCT)	Teenage Pregnancy Strategy

Priority Reference	Actions	Timescale	Responsible Organisation	Linkages
1.1.12	All teenage parents are provided with a co-ordinated package of support.	2006 - 2008	Hartlepool Primary Care Trust (PCT) North Tees and Hartlepool NHS Trust Children's Services Department	Teenage Pregnancy Strategy
BH 1.2	Healthy lifestyles are promoted for children and young people			
1.2.1	Further increase the number of schools achieving national healthy school status.	2006 – 2009	Assistant Director (Performance and Achievement)	National Healthy School Standards
1.2.2	Respond to the government guidance on “Transforming School Food” by developing a “Healthy Food in Schools Strategy” to encourage and develop more healthy choices for children through school meal service, tuck shops, etc.	2006 – 2007	Assistant Director (Performance and Achievement)	Healthy Food in Schools Strategy
1.2.3	Universal health screening is provided within a common framework at appropriate ages, and reaches groups on whom health services have traditionally not focused.	2006 - 2009	Hartlepool Primary Care Trust Assistant Director (Planning and Service Integration)	Strategic Service Development Plan Children's Centres and Extended Schools Strategy

Priority Reference	Actions	Timescale	Responsible Organisation	Linkages
1.2.4	All young people receive quality Sex and Relationships Education within Personal, Social and Health Education in schools and out of school settings including those in post 16 education.	2006 - 2009	Assistant Director (Performance and Achievement) Hartlepool Primary Care Trust	National Healthy School Standards Teenage Pregnancy Strategy
1.2.5	Increased access to sexual health and contraceptive services in their areas.	2006 - 2008	Hartlepool Primary Care Trust	Teenage Pregnancy Strategy
BH 1.3	Action is taken to promote children and young people's physical health			
1.3.1	75% school-age children accessing 2 hours of PE and school sport per week by 2006.	2006 - 2008	Assistant Director (Performance and Achievement)	Physical Education, School sports and Club Links Strategy (PESSCL)
1.3.2	85% school-age children accessing 2 hours of PE and school sport per week by 2008.	2006 - 2008	Assistant Director (Performance and Achievement)	Physical Education, School sports and Club Links Strategy (PESSCL)
1.3.3	All school age children have the opportunity to access 4-5 hours of sport per week, 2 hours of which is in curriculum time by 2010.	2006 - 2008	Assistant Director (Performance and Achievement)	Physical Education, School sports and Club Links Strategy (PESSCL)
BH 1.4	Take action to promote children and young people's mental health			
1.4.1	Provide parenting advice and support in relation to early intervention and prevention.	2006 - 2008	Tees and North East Yorkshire NHS Trust Assistant Director (Safeguarding and Specialist Services)	CAMHS Strategy National Service Framework 9 Behaviour and Education Support Team development and action plans

Priority Reference	Actions	Timescale	Responsible Organisation	Linkages
1.4.2	Develop appropriate assessment processes for children and young people who self harm.	2006 - 2008	Tees and North East Yorkshire NHS Trust Assistant Director (Safeguarding and Specialist Services)	CAMHS Strategy National Service Framework 9
1.4.3	Develop a network for professionals working with children and young people who self harm.	2006 - 2008	Tees and North East Yorkshire NHS Trust Assistant Director (Safeguarding and Specialist Services)	CAMHS Strategy National Service Framework 9
1.4.4	Identify training and development needs for professionals working with children and young people who self harm.	2006 - 2008	Tees and North East Yorkshire NHS Trust Assistant Director (Safeguarding and Specialist Services)	CAMHS Strategy National Service Framework 9
1.4.5	All staff working with children and young people should be competent to identify the early warning signs of mental health problems.	2006 - 2008	Tees and North East Yorkshire NHS Trust Assistant Director (Safeguarding and Specialist Services)	CAMHS Strategy National Service Framework 9
1.4.6	Children and young people demonstrating early signs of emotional difficulty are offered appropriate service: whole class, group or individual work.	2010	Tees and North East Yorkshire NHS Trust Assistant Director (Safeguarding and Specialist Services)	Behaviour and Education Support Team development and action plans National Service Framework 9 National Healthy Schools Standards Connexions Acorn Therapeutic Service Plan

Priority Reference	Actions	Timescale	Responsible Organisation	Linkages
1.4.7	Children and young people's emotional health needs are promoted and addressed.	2006 – 2009	Hartlepool Primary Care Trust Assistant Director (Performance and Achievement) Tees and North East Yorkshire NHS Trust New Deal for Communities	Government prescribed materials for “social and emotional aspects of learning” (SEAL) Proposed New Deal for Communities (NDC) pilot projects Hartlepool Primary Care Trust “emotional well-being fayres” in secondary schools.
1.4.8	Young Offenders have access to appropriate services.	2006 – 2007	Youth Offending Service Tees and North East Yorkshire NHS Trust	CAMHS Strategy Youth Justice Plan
BH 1.5	Ensure looked after children's health needs are assessed			
1.5.1	Increase access to doctors, dentists and sexual health support services for looked after young people.	2006 – 2007	Assistant Director (Safeguarding and Specialist Services) Hartlepool Primary Care Trust	Safeguarding and Review Unit Business Plan
1.5.2	Implement a ‘fast track’ primary care service for looked after children.	2006 – 2007	Hartlepool Primary Care Trust Assistant Director (Safeguarding and Specialist Services)	Safeguarding and Review Unit Business Plan
1.5.3	Provide further training to foster carers about good health, emotional health, bullying and attachment issues.	2006 – 2007	Assistant Director (Safeguarding and Specialist Services)	Safeguarding and Review Unit Business Plan Behaviour and Education Support Team development and action plans

Priority Reference	Actions	Timescale	Responsible Organisation	Linkages
1.5.4	Ensure that all young people preparing to leave care have access to the relevant support through health and associated services in relation to their health needs.	2006 – 2009	Assistant Director (Safeguarding and Specialist Services) Hartlepool Primary Care Trust	Leaving Care Strategy
BH1.6	Ensure the health needs of children and young people with disabilities are addressed			
1.6.1	All children with disabilities aged 14+ have a transition plan to support their move to Adult Services.	2006 - 2007	Assistant Director (Safeguarding and Specialist Services) Adult and Community Services	Transitions policy
1.6.2	Consider further developments of the care co-ordination assessment and service provision.	2006 – 2007	Assistant Director (Safeguarding and Specialist Services)	Children with a disability/SEN strategy
1.6.3	Raise awareness and promote the benefits of Direct Payments to parents of children with disabilities and 16/17 year olds.	2006 – 2007	Assistant Director (Safeguarding and Specialist Services) Adult and Community Services	Children with a disability/SEN strategy
1.6.4	Children and young people who may be disabled, ill, or injured receive expert referrals and have early access to assessment services.	2006 - 2009	Hartlepool Primary Care Trust North Tees and Hartlepool NHS Trust Tees and North East Yorkshire NHS Trust	Strategic Service Development Plan National Services Framework 8

CHILDREN AND YOUNG PEOPLE'S PLAN

A Strategic Plan for the Provision of Services to the
Children and Young People of Hartlepool

April 2006 – March 2009

PART 3

STAY SAFE

DRAFT 2 JANUARY 2006

OUTCOME: *Stay Safe*

Our vision for this outcome in Hartlepool is that children and young people will live, grow, and learn in safety, where parents, carers and all adults take responsibility for their safety and well-being and they are free from harm, discrimination, harassment and exploitation.

Children and young people tell us:

- that they do not want to be bullied.
- that they do not want to be harassed and assaulted when out in the community.
- that they want to feel safe at home.
- that they want to feel safe in all places.
- that they want to be safe with all adults.

Parents / carers and our partners tell us:

- that children and young people should not be bullied.
- that they should not be discriminated against nor manipulated.
- that all adults, but particularly professionals, are responsible for their safety.
- that the protection of children and young people is essential.

The Government's National Priorities are:

1. Children and young people and their carers are informed about key risks to their safety and how to deal with them.
2. Children and young people are provided with a safe environment.
3. The incidence of child abuse and neglect is minimised.
4. Agencies collaborate to safeguard children according to the requirements of the current government guidance.
5. Services are effective in establishing the identity and whereabouts of all children and young people 0-16.
6. Action is taken to avoid children and young people having to be looked after.
7. Looked after children live in safe environments and are protected from abuse and exploitation.
8. Children and young people with learning difficulties and/or disabilities live in safe environments and are protected from abuse and exploitation.

Our own assessment tells us:

In relation to being safe from maltreatment, neglect, violence and sexual exploitation:

- OFSTED requirements are met by all child care providers.
- schools were judged as either good or very good with regard to pupil's care, welfare, health and safety.
- all primary and secondary schools inspected were judged as complying with the Local Safeguarding Children Board child protection procedures.
- referrals of children in need to social work teams leading to initial assessments was similar to the average for England but lower than for similar councils.
- referrals of children in need to social work teams within 12 months of a previous referral were lower than similar councils.
- the percentage of initial assessments completed within 7 working days was higher than similar councils.
- the number of Initial Child Protection Conferences per 10,000 population under 18 was half as high again as the number for similar councils.
- the recorded number of Core Assessments of children in need was so high as to require further scrutiny.
- 93.8% of Core Assessments were completed within 35 working days, much higher than for similar councils.
- all children and young people requiring a multi-agency child protection plan have a social worker.
- the number of children on the Child Protection Register per 10,000 population under 18 is the same as similar councils.
- first time registrations on the Child Protection Register as a percentage of all registrations was the same as similar councils.
- the percentage of child protection re-registrations during the year has fallen and was 12.1% for the first six months of 2005.
- 96% of children on the Child Protection Register are white.
- all Child Protection Register cases were reviewed within the required timescales.
- the number of de-registrations from the Child Protection Register per 10,000 population under 18 was marginally higher than for similar councils.
- the percentage of de-registrations of children who were on the Child Protection Register for over 2 years was the same as similar councils.
- the percentage of child protection enquiries leading to Initial Child Protection Conferences which were held within 15 days was half as great again as for similar councils.

In relation to being safe from accidental injury and death:

- there has been a steady fall in road casualties (0-16), due to the introduction of preventative safety training in schools.

In relation to being safe from bullying and discrimination:

- in the last 5 years there have been no significant trends with regard to exclusions as a result of bullying, although 84% of excluded boys are excluded because of bullying incidents.

In relation to being safe from crime and anti-social behaviour in and out of school:

- key indicator “Fear of crime and anti-social behaviour” (data will be available for next draft).

In relation to having security, stability and being cared for:

- the number of children and young people looked after per 10,000 population under 18 is lower than for similar councils.
- all looked after children have an allocated social worker.
- all looked after children have their care plans reviewed within required timescales.
- 96% of looked after children under 10 years of age are in foster placements, much higher than for similar councils.
- 74% of these children are placed within Hartlepool, again much higher than for similar councils.
- the percentage of looked after children placed with parents is only a third of that for similar councils.
- only 10% of all Hartlepool's looked after children are placed in residential accommodation.
- 86.6% of all looked after children and young people are cared for in foster placements, higher than for similar councils.
- 19.3% of looked after children are fostered by relatives or friends.
- the percentage of looked after children with 3 or more placement moves in the year is within the national target.
- the percentage of looked after children for 4+ years who were in foster placement 2+ years needs to improve.
- protocols are in place to safeguard looked after children placed in Hartlepool by other councils.
- The percentage of looked after children placed for adoption is very low and needs to be improved.
- the percentage of looked after children placed for adoption during 2004-05 was also much lower than for similar councils.
- the percentage of looked after children adopted during 2004-05 placed within 12 months of best interest decision being made was also lower than for similar councils.
- all eligible, relevant and former relevant children leaving care have pathway plans and a personal adviser.
- key Indicator “% Care Cases completed in the Courts within 40 weeks” ” (data will be available for next draft).

Things we do well:

- Have low numbers of children in need referred to social work teams within 12 months of a previous referral.
- Have only 12.1% child protection re-registrations during the first six months of 2005.
- Have a high number of looked after children in foster placements through a quality fostering service.
- Have a percentage of looked after children with 3 or more placement moves in the year, within the national target.

To continue to improve we will:

- ensure that children in need receive an initial assessment within 7 working days of being referred to the social work teams.
- ensure that the percentage of children being referred within 12 months of a previous referral is maintained or reduced.
- ensure that the percentage of child protection re-registrations during the year is maintained or reduced.
- ensure that only children likely to require a child protection plan are taken to Initial Child Protection Conference following a child protection enquiry.
- ensure that the number of looked after children with 3 or more placements during the year is maintained within the national target.
- ensure that the percentage of looked after young children are maintained in foster placements.
- ensure that the percentage of all looked after children in foster placements is maintained or increased.

Things we can do better are:

- Develop partnership arrangements to address the concerns of children and young people about bullying.
- Agree actions with partners in order to increase safety on the streets, thereby reducing the incidence of street crime /assaults etc. " (data will be available for next draft).
- Develop a multi-agency training plan to meet the needs of all staff and volunteers who work with children in any setting in Hartlepool.
- Develop the work of the Local Safeguarding Children Board to encompass the wider remit of Safeguarding while maintaining a strong emphasis on Child Protection.
- Improve the way that referrals and core assessments are measured.
- Explore the reasons why more initial child protection conferences occur in Hartlepool than in similar councils.
- Improve the percentage of looked after children for more than 4 years who have been in the same foster placements for 2+ years.
- Improve the number of children adopted during the year and the percentage of looked after children adopted during the year placed within 12 months of best interest decision being made.

In order to do our best for all children and young people we will deliver the national priorities and contribute to the delivery of the Hartlepool Community strategy. In particular we will:

- ensure that children and young people and their carers are informed about key risks to their safety and how to deal with them.
- provide children and young people with a safe environment.
- minimise the incidence of child abuse and neglect.
- ensure agencies collaborate to safeguard children under the direction of the Local Safeguarding Children Board.
- ensure that there are effective services to establish the identity and whereabouts of all children and young people under 16.
- support children in need and their families to avoid the need for them to be looked after.

In recognition of the additional needs of some young people we will:

In relation to children with disabilities:

- ensure that all children with disabilities aged 14+ have a transition plan to support their move to Adult Services.
- ensure that children and young people with learning difficulties and disabilities live in safety, free from abuse and exploitation.

In relation to looked after children:

- ensure looked after children live in safety, free from abuse and exploitation.

In relation to children and young people from black and minority ethnic communities:

- ensure that children and young people from black and minority ethnic groups have equality of access to services.
- ensure that children and young people from black and minority ethnic groups are not inappropriately represented within the child protection and looked after children populations.

PLAN				
Priority Reference	Actions	Timescales	Responsible Organisation	Linkages
SS 2.1	Children and young people and their carers are informed about key risks to their safety and how to deal with them.			
2.1.1	Ensure parents and carers are advised how to keep children safe, including safety in the home.	2006 - 2009	Primary Care Trust (PCT) National Health Services (NHS) Trusts	Local Safeguarding Children Board (LSCB) Business Plan
2.1.2	Ensure children and young people are educated about road safety and how to respond to other environmental hazards.	2006 - 2009		
2.1.3	Ensure children and young people are taught about the dangers posed by some adults and how to minimize them.	2006 - 2009	Assistant Director Safeguarding and Specialist Services	LSCB Business Plan Education Development Plan
SS 2.2	Children and young people are provided with a safe environment			
2.2.1	Increase the number of staff trained to identify risks of harm and how to manage them.	2006 - 2009	Assistant Director Safeguarding and Specialist Services	LSCB – Multi-Agency Training Plan
2.2.2	Develop partnership arrangements to address the concerns of children and young people about bullying	2006 - 2009	Assistant Director Planning and Service Integration	

Priority Reference	Actions	Timescales	Responsible Organisation	Linkages
SS 2.3	The incidence of child abuse and neglect is minimised.			
2.3.1	Ensure there is co-ordinated and timely support to children and young people at risk of harm.	2006 - 2009	Assistant Director Safeguarding and Specialist Services	LSCB – Child Protection Procedures Prevention Strategy
2.3.2	Improve Criminal Records Bureau (CRB) and other vetting checks for adults working with children and young people.	2006 - 2007	Assistant Director Safeguarding and Specialist Services	LSCB - Child Protection Procedures
2.3.3	Improve joint agency arrangements for the management of sex offenders in the community.	2006 - 2007	Assistant Director Safeguarding and Specialist Services	Dangerous Offenders Protocol
SS 2.4	Agencies collaborate to safeguard children according to the requirements of current government practice			
2.4.1	Ensure inter-agency policies and procedures are comprehensive and up-to-date.	2006 - 2009	Assistant Director Safeguarding and Specialist Services	LSCB – Child Protection Procedures
2.4.2	Increase the number of staff, paid carers and volunteers working with children who are provided with guidance and training on how to recognize and raise safeguarding and welfare concerns.	2006 - 2009	Assistant Director Safeguarding and Specialist Services	LSCB – Multi-Agency Training Plan

Priority Reference	Actions	Timescales	Responsible Organisation	Linkages
SS 2.5	Services are effective in establishing the identity and whereabouts of all children and young people 0 – 16			
2.5.1	Continue to develop the infrastructure for the rollout of Information Sharing and Assessment.	2006 - 2009	Assistant Director Planning and Service Integration	Information Sharing and Assessment (ISA) and Common assessment Framework (CAF)
2.5.2	Ensure that there are secure arrangements for sharing information to protect children.	2006 - 2009	Assistant Director Safeguarding and Specialist Services	LSCB – Child Protection Procedures
SS 2.6	Action is taken to avoid children and young people having to be looked after			
2.6.1	To ensure that a robust policy is in place to monitor and evaluate decisions to look after a child or young person.	2006 - 2009	Assistant Director Safeguarding and Specialist Services	Prevention Strategy Placement Choice
SS 2.7	Looked after children live in safe environments and are protected from abuse and exploitation			
2.7.1	Increase the number and range of foster and adoptive placements to meet local needs.	2006 - 2009	Assistant Director Safeguarding and Specialist Services	Prevention Strategy Placement Choice
2.7.2	Reduce the number of placement moves for looked after children and increase the stability of placements.	2006 - 2009	Assistant Director Safeguarding and Specialist Services	Placement Choice
SS 2.8	Children and Young People with learning difficulties and/or disabilities live in safe environments and are protected from abuse and exploitation			
2.8.1	Improve arrangements for transition between settings and from children's to adult services.	2006 - 2007	Head of Business Unit	Transitions Policy

CHILDREN AND YOUNG PEOPLE'S PLAN

A Strategic Plan for the Provision of Services to the
Children and Young People of Hartlepool

April 2006 – March 2009

PART 4

ENJOY AND ACHIEVE

DRAFT 2 JANUARY 2006

OUTCOME: *Enjoy and Achieve*

Our vision for this outcome in Hartlepool is that children are given the best start in life through high quality early years provision and support for parents and carers. This will ensure that they are well prepared and ready for school where they will enjoy their education and have opportunities to achieve their potential. We want children and young people, especially those who are vulnerable to develop personally and socially and for them to safely enjoy recreation and leisure time away from school.

Children and young people tell us:

- they want the best for all children and young people.
- they want to attend good schools and enjoy their time there and feel safe from harassment and bullying.
- that children under 5 should have a good education and be well prepared to start school.
- that a good education and getting qualifications is important.
- it is important to work hard at school but that it is also important to have hobbies and have fun in their spare time.
- schools are important places to meet with friends and get involved in different activities such as sport and leisure.
- they value the support they get, for instance, from foster carers and teachers.
- many of them enjoyed doing activities after school and in their spare time in school and in other settings.
- that some disabled children and young people would like further access to leisure activities in school.

Parents / carers and our partners tell us:

- that good quality early learning and play is important.
- we need modern high quality school buildings.
- that we need to make better use of school facilities and develop extended schools.
- children and young people need good quality play, social and leisure facilities in settings other than schools.
- we need to develop ICT to assist learning.
- that young people 14-19 need a good choice of courses in terms of their continued education and training.
- to emphasise enjoyment as much as achievement.
- to celebrate the achievements of all children, young people and their schools.
- that we need to be inclusive and ensure all children and young people's needs are addressed.
- we need good quality support for pregnant school girls and young mothers to enable them to be re-integrated into education and training.
- we need good quality youth services.
- that we must improve the performance of boys in schools.
- to work more closely with the voluntary sector and other agencies to support children and young people.
- to help parents and carers to learn.
- to work in partnership with parents and carers.
- that we should recruit high quality staff to work on behalf of children and young people.
- to emphasise the wider benefits of learning such as personal and social development.

The Government's National Priorities are:

1. Ensure that parents and carers receive support in helping their children to enjoy and achieve.
2. Ensure that early years provision promotes children's development and well-being and helps them meet early learning goals.
3. Ensure that educational provision 5-16 is of good quality.
4. Enable and encourage children and young people to attend and enjoy school.
5. Improve the quality of provision which is made for those children and young people who do not attend school.
6. Ensure all children and young people can access a range of recreational activities including play and voluntary learning.
7. Ensure vulnerable children and young people are helped to enjoy and achieve.

Our own assessment tells us:

In relation to Early Years:

- 93.4% of three year olds attend early education in Hartlepool.
- OfSTED inspections of Early Years provision show that it is at least satisfactory in all schools.
- the percentage of very good judgements on overall quality of nursery provision in full day care is above national averages.
- a 45% increase in providers of childcare is above the national average.
- a 58% increase in childcare places is well above the national average.

In relation to 5-16 provision:

- Key Stage 1 (aged 7) performance was just below national averages in 2005 in reading, writing and mathematics. 83.5% of seven year olds achieved the expected Level 2 or above in reading, compared to 80.7% in writing and 89.5% in mathematics.
- Key Stage 2 (aged 11) performance was above national averages in 2005. 79.6% of eleven year olds achieved the expected Level 4 or above in English and 78.4% did so in maths. At the higher levels, 29.1% of pupils achieved Level 5 or above in English and 32% did so in maths – both above national averages.
- Hartlepool is the most improved local authority (LA) nationally for KS2 outcomes in between 2003 and 2005.
- Key Stage 3 performance (aged 14) is improving. For Level 5 and above, which is the expected achievement for fourteen year olds, performance in 2005 in maths at 74.6% is now above national average and the gap between Hartlepool and national average is closing in English and Science. 71.2% of 14 year olds achieved Level 5 or above in English whilst 68% did so in science. Performance in ICT, however, is well below the national average and is a concern.
- attainment gaps are narrowing. (data will be available for next draft).
- boys' underachievement is identified as a cause for concern in all key stages. In 2005 girls outperformed boys by 9% in reading and 12% in writing in Key Stage 1 assessments (Level 2 or above). At Key Stage 2 they outperformed boys by 9% in English (Level 4 or above) and by 15% at Key Stage 3 (Level 5 or above) in the same subject. At Key Stage 4 the percentage of girls obtaining 5 or more A* - C grades at GCSE exceeded boys by 9% which is broadly in line with the national trend. The underperformance of boys in Key Stage 3 has been identified as a particular concern.

- value added measures for progress between the key stages are satisfactory and broadly in line with national averages.

- OfSTED inspections show a higher proportion of good or very good schools than the national average.
- the number of underperforming schools is falling – from 8 primary schools to 2 in 2005. No secondary school achieved less than 60% at Level 5+ in English, maths and science in 2005.
- the percentage of pupils achieving at least 5A*-C has increased consistently for five years, often above the rate of increase nationally. In 2005 52.5% of Hartlepool sixteen year olds obtained 5A*- C grades at GCSE, compared to just 36% in 2000. Attainment gap between Hartlepool and national performance has narrowed from 13% in 2000 to 4% in 2005. 5A*-C performance is consistently above statistical neighbours.
- the percentage of sixteen year olds achieving 5A* - G grades including English and mathematics increased to 88.3 % in 2005 which is now in line with national averages, but the percentage of pupils achieving 5A*- C including an English and maths GCSE, at 36.4%, is well below the national average.
- performance at 1A*-G is a concern as it is below statistical neighbours and national averages. In 2005, 95.4% of sixteen year olds obtained one pass compared to 96.3% nationally. This represents approximately 60 Hartlepool young people leaving compulsory schooling in 2005 without one GCSE qualification of any description.
- minority ethnic pupils achieve well, although numbers are small.

In relation to enabling children and young people to attend, enjoy and achieve at school:

- the number of surplus places is low (<10% overall). No school has a roll greater than 10% above net capacity. In admissions, over 95% of first preferences are met.
- overall attendance has improved from 92.4% in 2001 to 93.9% in 2005. Progress in both primary and secondary schools is good.
- the rate of permanent exclusions falling. In 2004/05 permanent exclusions were 22 compared to 44 in 2003/04, too high but in line with statistical neighbours.
- the number of Special Educational Needs (SEN) pupils permanently excluded is too high. 50% of permanently excluded pupils were on the special needs register in 2003/4.

In relation to recreational and voluntary learning:

- there is a very good range of recreational and voluntary learning provision.
- in 2004, 68% of schools provided breakfast clubs, 92% provided lunchtime clubs and activities, 100% provided after school clubs and 42% provided holiday schemes.
- since 1999 there has been a year on year increase in the number of out of hours learning activities available to children and young people.
- by 2004, 67% of schools were involved in a partnership with the University of the First Age compared to 16% in 2003. Student participation is up from 60 to 567.
- children and young people access a wide range of recreational activity in settings other than schools provided by a variety of agencies including the voluntary sector.

In relation to pupils who have special educational needs:

- the percentage of pupils with statements fell by 2.2% between 1999 and 2004 - 4th best amongst statistical neighbours and the percentage of pupils in special schools fell by 0.9% between 2002 and 2004 - best performance amongst statistical neighbours.
- Section 10 inspections show SEN provision and inclusion to be good overall.
- attainment at KS1, 2 and 3 for SEN pupils is in line with statistical neighbours.
- no cases have gone to tribunal. There were no Special Educational Needs and Disability Tribunal (SENDIST) appeals in 2003/04.
- there were no permanent exclusions from special schools in 2004 and no statemented children or young people were excluded from any school in Hartlepool.
- 100% of statements without exceptions and over 90% of statements with exceptions were completed on time in 2003/4. (Best Value Performance Indicator BVPI 43a/b)
- there is a high level of school satisfaction – Audit Commission survey of schools' views showed that Hartlepool was in the top quartile for 9 out of the 10 areas surveyed for SEN.
- A local authority inclusion project has led to significant gains for children (External evaluation).

In relation to children who do not attend school:

- provision is not satisfactory. The Access 2 Learning (A2L) service is a cause for concern.
- the percentage of pupils receiving alternative tuition because of permanent exclusion was 0.66% in 2004. This is above the national median and statistical neighbours.
- the percentage of pupils who have received alternative tuition for longer than one school year was 38.5%, above statistical neighbours and the national median.
- percentage of pupils re-integrated was 2.2% in 2004 - well below national averages.

In relation to looked after children:

- all LAC have an educational placement. Only two are not on a school roll.
- in 2005, 75% of LAC pupils who sat the end of Key Stage 2 test performed as well as their peers, which is higher than national expectations by 15%.
- all Key Stage 2 pupils made some progress from Key Stage 1. 60% of them (3 pupils) made better than expected value added progress in English and maths, given their prior attainment.
- Key Stage 3 results in 2005 showed a significant improvement. In 2002 no looked after pupil aged 14 achieved Level 5 or above in either English, maths or science but in 2005 this improved to 46% in English and science and 38% in maths.
- GCSE results in 2005 were unsatisfactory. Only one looked after pupil obtained 5A*-C out of 6. Two achieved 5A* - G and three achieved 1A*-G. National targets were not met on all three indicators.
- attendance of LAC is very good – 96.7% compared to 88.8% nationally in school year 2004/05.

Things we do well:

- Quality of provision in early years.
- Increased provision for childcare.
- Partnership working.
- Progress in tackling absence from school.
- Improvement in standards especially at Key Stage 2 and GCSE 5A*-C.
- Strategy for school improvement.
- Targeting resources to priority areas.
- Capacity of management in education to improve is good.
- Manage attendance and exclusions.
- Provision of out of school hours learning and recreational activities in school and other settings.
- Provision of recreational activities by the voluntary sector and other providers.
- Provide good value for money.
- Inclusion of children and young people with special needs.

To continue to improve we will:

- develop Children's Centres and Extended Schools as part of an integrated childcare strategy for under 5s.
- provide good quality childcare for all under 3s and target potentially vulnerable families.
- support parents and carers in helping their children to enjoy and achieve.
- ensure that early years provision promotes children's development and well-being and helps them meet early learning goals.
- monitor school performance and challenge and support them to improve the quality of provision through an agreed School Improvement Strategy.
- support schools in developing robust self evaluation in order to ensure continuous improvement.
- monitor underperformance amongst vulnerable and underachieving groups and target resources to meet their needs (eg) LAC, boys.
- enable and encourage children and young people to attend and enjoy school.
- Improve the quality of provision which is made for those children and young people who do not attend school.
- ensure all children and young people can access a range of recreational activities including play and voluntary learning.
- work with the voluntary sector and other agencies to improve the range and quality of recreational and learning opportunities for children and young people.
- ensure vulnerable children and young people are helped to enjoy and achieve.

Things we can do better are:

- Improve the performance of children in Key Stage 1 (aged 7) in order to meet national averages.
- Improve the performance of children at Key Stage 3 (aged 14) in order to meet national averages, especially in English, Science and ICT. Focus on boys' achievements as a way of achieving this.
- Improve the performance of young people at Key Stage 4 (aged 16) in order to meet national averages especially in English and Mathematics.
- Narrow the gaps in attainment that exist between the more vulnerable children and young people and their peers by working more closely with other agencies including the voluntary sector.
- Improve boys' achievement across all key stages but especially at Key Stage 3.
- Improve provision for pupils who do not attend school and increase the number of pupils who are successfully reintegrated into mainstream schools.
- Improve the performance of children and young people who are Looked After.
- Engage with the voluntary sector and other agencies to improve the range and quality of recreational and learning opportunities for children and young people in school and non school settings.

In order to do our best for all children and young people we will deliver the national priorities and contribute to the delivery of the Hartlepool Community strategy. In particular, we will:

- support parents and carers in helping children to achieve.
- ensure early years provision promotes development and well-being.
- ensure that educational provision 5-16 is of good quality.
- maximise attendance at schools and enable children and young people to enjoy school and to achieve highly.
- enable children and young people to enjoy out of school activities and recreation in a variety of settings and celebrate the learning and development that these provide.
- ensure that provision for those who do not attend school is good and support children and young people in being included in mainstream settings where appropriate.
- make sure that children and young people have access to a wide range of recreational activities including play and voluntary learning in school and other settings.
- further develop the range and quality of recreational activity by drawing upon the skills and expertise of the voluntary sector and other agencies.
- ensure that children and young people who are vulnerable, such as looked after children and those who have learning difficulties and/or disabilities, are helped to enjoy and achieve.

In recognition of the additional needs of some young people we will:

- ensure that for children and young people who are looked after:
 - education and training that meets their needs is provided.
 - effective personal education plans are in place.
 - carers are supported.
 - every school and college is aware of the needs of LAC and has a designated teacher.
 - there is a range of cultural and leisure activities in which to participate.
 - achievements are monitored and celebrated.
 - additional educational support is provided where necessary.
 - attendance at school is maximised and permanent exclusion is avoided.
 - participation in post 16 education and training is a priority.
- ensure that for children and young people with learning difficulties and/or disabilities:
 - their needs are assessed and early intervention is in place to address these.
 - protocols across all agencies for assessing needs of children and young people are in place.
 - parents are supported in contributing to the assessment of children and young people.
 - education and training meets needs.
 - progress and achievement is monitored and celebrated.
 - there is access to mainstream provision where appropriate.
 - there is support and encouragement to participate in a range of cultural and leisure activities.

PLAN				
Priority Reference	Actions	Timescale	Responsible Organisation	Linkages
E&A 3.1	Parents and carers receive support in helping their children to achieve			
3.1.1	Provide high quality childcare and advice and support on childcare to parents and carers.	April 2006 – March 2009	Assistant Director Children's Services (Performance and Achievement)	Sure Start Plan Education Development Plan (EDP)
3.1.2	Develop family learning programmes and provide high quality information to parents on school performance.	April 2006 – March 2009	Assistant Director Children's Services (Performance and Achievement)	Adult Education Plan
3.1.3	Provide impartial advice and guidance for parents and carers on school admissions.	April 2006 – March 2009	Assistant Director Children's Services (Performance and Achievement)	School Organisation Plan
3.1.4	Co-ordinate specialist support for parents and carers of vulnerable children and young people, (e.g.) those with special educational needs, looked after etc.	April 2006 – March 2009	Assistant Director Children's Services (Performance and Achievement)	EDP SEN and Disabilities Action Plan Multi Agency Looked After Partnership (MALAP) Action Plan
E&A 3.2	Early years provision promotes development and well being and helps Hartlepool children to meet early learning goals			
3.2.1	Ensure there is an integrated strategy for under 5s covering health, childcare and preparation for learning.	April 2007 – March 2009	Sure Start Partnership Hartlepool Borough Council (HBC) Early Years Manager Health	Sure Start Plan Health Plans Education Development Plan (EDP)

Priority Reference	Actions	Timescale	Responsible Organisation	Linkages
3.2.2	Develop a strategy for Children's Centres and Extended Schools.		HBC Early Years Manager HBC Extended Schools Co-ordinator	Sure Start Plan EDP Priorities 1 and 4
E & A 3.3	Ensure that educational provision 5 – 16 is of good quality			
3.3.1	Challenge and support all schools to improve the quality of educational provision and improve outcomes for all children. Priorities will be on KS1 (all areas), KS3 English, science and ICT and KS4 English and mathematics.	April 2007 – March 2009	Assistant Director Children's Services (Performance and Achievement) All primary schools	EDP Priorities 1-5 Corporate Strategy Lifelong Learning and Skills Theme
3.3.2	Monitor provision in all schools and implement a strategy for intervention, challenge and support to ensure acceptable standards.	April 2007 – March 2009	Assistant Director Children's Services (Performance and Achievement) All secondary schools	EDP Priority 5 Corporate Strategy Lifelong Learning and Skills Theme
3.3.3	Support Hartlepool schools in self-evaluation to ensure continuous improvement especially in the curriculum and the quality of teaching and learning.	April 2007 – March 2009	Assistant Director Children's Services (Performance and Achievement)	EDP Priority 5
3.3.4	Monitor patterns of underperformance amongst vulnerable groups in Hartlepool and take action to redress inequalities. Priority groups include Looked After Children and underachieving boys.	April 2006 – March 2009	Assistant Director Children's Services (Performance and Achievement)	EDP

Priority Reference	Actions	Timescale	Responsible Organisation	Linkages
E&A 3.4	Enable and encourage children and young people to attend and enjoy school and to achieve highly			
3.4.1	Ensure that Hartlepool children and young people are educated in good quality school buildings and facilities which promote high quality learning and teaching.	April 2007 – March 2009	Assistant Director Children's Services (Performance and Achievement)	EDP Asset Management Plan
3.4.2	Ensure that there are sufficient, suitable and accessible school places and that admission arrangements give priority to the most vulnerable, reflect need and minimise stress.	April 2007 – March 2009	Assistant Director Children's Services (Performance and Achievement)	EDP School Organisation Plan
3.4.3	Promote good behaviour and attendance for all pupils and ensure that specialist support is given to parents and carers of difficult to manage children and young people.	April 2007 – March 2009	Assistant Director Children's Services (Performance and Achievement)	EDP SEN Action Plan
3.4.4	Monitor the personal and academic development of children and young people and ensure that they are set realistic and challenging targets for improvement.	April 2007 – March 2009	Assistant Director Children's Services (Performance and Achievement)	EDP Priorities 1, 2, 3 and 4
3.4.5	Work with partners, especially the voluntary sector, to address the needs of vulnerable children and young people in Hartlepool, (e.g.) young carers, underachieving groups, the disaffected and disengaged etc.	April 2006 – March 2009	Assistant Director Children's Services (Performance and Achievement)	EDP

Priority Reference	Actions	Timescale	Responsible Organisation	Linkages
E&A 3.5	Make good educational provision for children who do not attend school			
3.5.1	Ensure that Hartlepool children and young people who have been permanently excluded attend appropriate alternative settings aimed at securing re-integration into mainstream education or work.	April 2007 – March 2009	Assistant Director Children's Services (Performance and Achievement)	EDP Access to Learning Operational Plan
3.5.2	Provide suitable education for Hartlepool children who are not able to attend school, (e.g.) for medical reasons, pregnant school girls and young mums.	April 2007 – March 2009	Assistant Director Children's Services (Perf. and Achievement)	EDP Access to Learning Operational Plan
E&A 3.6	All children and young people access a range of recreational activities including play and voluntary learning			
3.6.1	Provide safe and accessible places for Hartlepool children and young people to play and socialise.	April 2007 – March 2009	Assistant Director Children's Services (Perf. and Achievement)	EDP
3.6.2	Work with partners, especially the voluntary sector, to provide a range of affordable, accessible, challenging and rewarding recreational activities learning opportunities for children and young people in school and out of school settings.	April 2007 – March 2009	Assistant Director Children's Services (Performance and Achievement)	
3.6.3	Ensure that recreational and voluntary learning opportunities reflect the needs of individuals and groups, especially those who are socially excluded.	April 2007 – March 2009	Assistant Director Children's Services (Performance and Achievement)	

Priority Reference	Actions	Timescale	Responsible Organisation	Linkages
E&A 3.7	Children and young people who are looked after are helped to enjoy and achieve			
3.7.1	Ensure that looked after children (LAC) in Hartlepool receive education and training which meet their needs.	April 2007 – March 2009	Assistant Director Children's Services (Performance and Achievement) Assistant Director Children's Services (Safeguarding and Specialist Services)	EDP MALAP Action Plan Education of LAC Development Plan
3.7.2	Ensure that all personal education plans are effective and implemented. Support carers to ensure that children participate in education and achieve their potential.	April 2007 – March 2009	Assistant Director Children's Services (Performance and Achievement) Assistant Director Children's Services (Safeguarding and Specialist Services)	EDP MALAP Action Plan Education of LAC Development Plan
3.7.3	Inform schools, colleges and other providers of education about the particular needs and circumstances of LAC and ensure that every school has a designated teacher for LAC.	April 2007 – March 2009	Assistant Director Children's Services (Performance and Achievement) Assistant Director Children's Services (Safeguarding and Specialist Services)	EDP MALAP Action Plan Education of LAC Development Plan Corporate Parent Action Plan
3.7.4	Encourage and support LAC and their foster carers to participate in a range of cultural and leisure activities and to develop the individual interests of each LAC.	April 2007 – March 2009	Assistant Director Children's Services (Performance and Achievement) Assistant Director Children's Services (Safeguarding and Specialist Services)	EDP MALAP Action Plan Education of LAC Development Plan Corporate Parent Action Plan

Priority Reference	Actions	Timescale	Responsible Organisation	Linkages
3.7.5	Monitor and improve the educational achievement, school attendance and cultural experiences of LAC and ensure that additional educational support is provided to those LAC in Hartlepool who need it.	April 2007 – March 2009	Assistant Director Children's Services (Performance and Achievement) Assistant Director Children's Services (Safeguarding and Specialist Services)	EDP MALAP Action Plan Education of LAC Development Plan Corporate Parent Action Plan
3.7.6	Ensure that the attendance of LAC in Hartlepool schools is maximised and that the permanent exclusion of LAC is avoided.	April 2007 – March 2009	Assistant Director Children's Services (Performance and Achievement) Assistant Director Children's Services (Safeguarding and Specialist Services)	EDP MALAP Action Plan Education of LAC Development Plan Corporate Parent Action Plan
3.7.7	Work with partners to encourage the participation of LAC and care leavers in post-16 education and training in Hartlepool.	April 2007 – March 2009	Assistant Director Children's Services (Performance and Achievement) Assistant Director Children's Services (Safeguarding and Specialist Services)	EDP MALAP Action Plan Education of LAC Development Plan Corporate Parent Action Plan Connexions Local Delivery Plan
E&A 3.8	Children and young people with learning difficulties and/or disabilities are helped to enjoy and achieve			
3.8.1	Ensure that Hartlepool children with learning difficulties and/or disabilities are identified, their needs assessed and that early intervention is in place to address those needs.	April 2007 – March 2009	Assistant Director Children's Services (Performance and Achievement) Assistant Director Children's Services (Planning and Service Integration)	EDP SEN and Disabilities Action Plan

Priority Reference	Actions	Timescale	Responsible Organisation	Linkages
3.8.2	Establish clear protocols across all agencies for assessing the individual needs of children and young people and for deciding on provision.	April 2007 – March 2009	Assistant Director Children's Services (Performance and Achievement) Assistant Director Children's Services (Planning and Service Integration)	EDP SEN and Disabilities Action Plan
3.8.3	Encourage and support parents to contribute to the assessment of children and young people's needs.	April 2007 – March 2009	Assistant Director Children's Services (Performance and Achievement) Assistant Director Children's Services (Planning and Service Integration)	EDP SEN and Disabilities Action Plan
3.8.4	Ensure that educational and training provision in Hartlepool schools, colleges and other providers meets the curriculum, staffing, equipment and transport needs of children and young people with learning difficulties and/or disabilities.	April 2007 – March 2009	Assistant Director Children's Services (Performance and Achievement) Assistant Director Children's Services (Planning and Service Integration)	EDP SEN and Disabilities Action Plan
3.8.5	Monitor and review the progress of individual children and young people in educational, personal, social and emotional outcomes. Ensure this is communicated between agencies and targets are revised accordingly.	April 2007 – March 2009	Assistant Director Children's Services (Performance and Achievement) Assistant Director Children's Services (Planning and Service Integration)	EDP SEN and Disabilities Action Plan

Priority Reference	Actions	Timescale	Responsible Organisation	Linkages
3.8.6	Monitor and evaluate the impact of policies and provision on the achievement of children and young people with learning difficulties and/or disabilities.	April 2007 – March 2009	Assistant Director Children's Services (Performance and Achievement) Assistant Director Children's Services (Planning and Service Integration)	EDP SEN and Disabilities Action Plan
3.8.7	Ensure that Hartlepool children with learning difficulties and/or disabilities have their needs met in mainstream settings where appropriate and that these settings provide access for children with disabilities.	April 2007 – March 2009	Assistant Director Children's Services (Performance and Achievement) Assistant Director Children's Services (Planning and Service Integration)	EDP SEN and Disabilities Action Plan Access Strategy
3.8.8	Support and encourage children with learning difficulties and/or disabilities to participate in a range of appropriate cultural and leisure activities.	April 2007 – March 2009	Assistant Director Children's Services (Performance and Achievement) Assistant Director Children's Services (Planning and Service Integration)	EDP SEN and Disabilities Action Plan

CHILDREN AND YOUNG PEOPLE'S PLAN

A Strategic Plan for the Provision of Services to the
Children and Young People of Hartlepool

April 2006 – March 2009

PART 5

MAKE A POSITIVE CONTRIBUTION

DRAFT 2 JANUARY 2006

OUTCOME: *Make a Positive Contribution*

Our vision for this outcome is to provide all children and young people who live in Hartlepool the opportunity to participate fully in the life of their community. We will work with children, young people and their families to ensure that they are central to our planning and that, through their involvement, we meet the national and local priorities set out in this Plan.

Children and young people tell us:

- they do not want to be bullied.
- they want to celebrate difference.
- they want to be listened to and have the right to a meaningful voice.
- they do not want to be affected by crime.
- they want to take part in making significant life decisions.
- they want access to a wide range of activities.
- they want to be seen positively by others in the community.

Parents / carers and our partners tell us:

- that more provision for supervised and unsupervised play is required as well as activities that divert children and young people from anti social behaviour and crime.
- that there is a shared responsibility in ensuring that children and young people are supported in becoming good citizens and ensuring their children and young people understand rights and responsibilities.
- that Hartlepool has an ideal opportunity to put children and young people at the centre of our planning process and facilitate them having a real voice in developing their town and community.
- that there is a willingness to support all children and young people to have a voice in developing the services they receive.
- that we need to ensure that paths of communications for parents and carers are kept open to senior managers such as headteachers.
- that they believe that we need to have a more strategic approach to supporting young people who wish to volunteer in order to build on the positive culture of volunteering in Hartlepool.
- that we should promote equality and support good relationships between different racial groups in Hartlepool.
- that the majority of children and young people do well and we should celebrate achievement at every opportunity rather than focus on negative incidents.

The Government's National Priorities are:

1. Children and young people are supported in developing socially and emotionally.
2. Children and young people, particularly those from vulnerable groups, are supported in managing changes and responding to challenges in their lives.
3. Children and young people are encouraged to participate in decision making and in supporting the community.
4. Action is taken to reduce anti-social behaviour by children and young people.
5. Action is taken to prevent offending and to reduce re-offending by children and young people.
6. Children and young people who are looked after are helped to make a positive contribution.
7. Children and young people with learning difficulties and / or disabilities are helped to make a positive contribution.

Our own assessment tells us:

Overall, the Annual Performance Assessment for 2005 showed that local services make a good contribution to enabling children and young people to make a positive contribution. Services consistently deliver above minimum requirements for children and young people.

In relation to engage in decision making and support the community and environment:

- out of six secondary schools all six have school councils, at least five definitely involve all pupils and the other one is moving towards that.
- the one secondary special school has a school council that involves all pupils.
- out of 30 primaries; 11 have school councils with all pupils involved, 12 others have school councils with pupils involved to varying degrees, three more have school councils but not with all pupils involved, one involves all pupils in open/class forums.
- the Borough has an active voluntary sector, although figures for children and young people volunteering are not currently collected.
- Hartlepool Millennium Volunteers works with 16-24 year olds and has had over 400 volunteers so far in 2005/06.

In relation to engage in law abiding and positive and positive behaviour in and out school:

- that we should prevent offending by reducing year on year the number of first time entrants to the youth offending system. This a new measure from April 2005 with a target figure for Hartlepool of under 289; the figure for the period April 2004/05 is 241.
- that we should reduce re-offending rates by 5%.
- in 2004/05 602 young people were brought to justice and had substantive outcomes. This equates to 3.4% of the population of 10-17 year olds.
- there were 23 permanent school exclusions in 2004/05 (academic year).
- there were 677 fixed term school exclusions in 2004/05 (academic year).

In relation to develop positive relationships and choose not to bully or discriminate:

- all schools have anti bullying procedures in place.
- we have been collating records of racial incidence in schools since September 2005.
- guidance for schools on the handling and monitoring of racial incidents has been circulated to all schools and training in relation to this guidance commences in February 2006.

In relation to develop self confidence and successfully deal with significant life changes and challenges:

- too few looked after children are involved in contributing to their reviews.
- we have to develop further the transition arrangements for young people from children's to adults' care.
- 29 primary schools are implementing Social and Emotional Aspects of Learning Programme. (SEAL)

In relation to develop enterprising behaviour:

- at the time of the 2001 census 1.1% of 18-24 year olds were Self Employed.
- Some schools operate a peer mentoring system.

Things we do well:

- Services consistently deliver above minimum requirements for children and young people. (APA)
- Overall, local services make a good contribution to enabling children and young people to make a positive contribution. (APA)
- Multi Agency working. (APA)
- Performance measures for youth crime have been consistently met in most areas.
- Involvement of children and young people in contributing to the development of service delivery. (APA)
- Provision of preventative services aimed at linking those children and young people at risk of offending with appropriate services.

To continue to improve we will:

- ensure we review procedures that are in place to tackle bullying.
- develop clear links between participation processes for children and young people, service providers, the Children and Young People's Strategic Partnership and the local political process. This will include further development of school councils as well as seeking opportunities to engage with children and young people outside of mainstream services.
- continue to divert children and young people away from anti social behaviour and crime, through further development of preventative services.
- continue to focus on ensuring that positive outcomes are achieved for looked after children by placing them at the centre of the planning process.
- ensure that all children and young people have access to services that support the development of self-confidence, self worth and emotional resilience that enables them to face significant life changes and challenges with appropriate support.
- continue to find innovative ways to engage with and involve children from black and minority ethnic communities in service development. (APA)
- prevent re-offending and support victims of crime.
- further develop the process for involving looked after children in their reviews and planning for their future. (APA)
- continue to develop play/activity opportunities for children and young people involving the statutory, voluntary and private sectors in service provision.

Things we can do better are:

- Respond to the issue of bullying identified as top priority by children and young people.
- Create a local environment that values the contribution of all children and young people in issues that impact on their current and future life choices.
- Continue to find innovative ways to engage with and involve children from black and minority ethnic communities in service development.
- Improve coordination of participation activities.

In order to do our best for all children and young people we will deliver the national priorities and contribute to the delivery of the Hartlepool Community strategy. In particular we will:

- research why the issue of bullying is still high on children and young people's agendas despite procedures put in place to tackle it and develop practice based on this research to ensure that children and young people are not bullied.
- ensure that children and young people are central to the development of a participation strategy that sets standards and includes involvement in the democratic process.
- provide services designed to reduce the incidence of social exclusion and offending behaviour by ensuring that effective community responses to early signs of known risk factors are easily accessible to children and young people.
- continue to provide services that support the development of high self esteem and confidence.
- develop a town wide strategy that enables and ensures all service providers in Hartlepool consult with, and facilitate children and young people to participate in, the development of their services.

In recognition of the additional needs of some young people we will:

- research issues around those young people in care system who are involved in criminal activity and plan action as necessary.
- work with our partners in the police and courts to develop systems that ensure swift administration of justice for young people who enter the juvenile justice system.
- help children and young people who are looked after by the council get involved in reviewing and developing the services that they receive.
- implement the MALAP action plan.
- review support services to young people to improve level of attendance at statutory SEN reviews.
- support young people from vulnerable groups to respond positively to challenges in their lives.
- develop effective transition arrangements for young people moving from children's to adult care.
- ensure all service providers meet the requirements of the Race Relations (Amendment) Act 2000 by promoting equality of opportunity and good relations between people of different racial groups within Hartlepool.

PLAN				
Priority Reference	Actions	Timescale	Responsible Organisation	Linkages
PC 4.1	Engage in decision making and support the community and environment.			
4.1.1	Ensure that children and young people are central to the development of a participation strategy that sets standards and includes involvement in the democratic process.	2006/07	Children's Fund Manager Hartlepool Participation Network	Children's Fund Plan
PC 4.2	Engage in law abiding and positive behaviour in and out of school.			
4.2.1	Provide services designed to reduce the incidence of social exclusion and offending behaviour by ensuring that effective community responses to early signs of known risk factors are easily accessible to children and young people.	2006/07	Children and Young People's Strategic Partnership (CYPSP) Youth Offending Service Crime and Disorder Partnership Children's Fund Partnership	Preventative strategy Youth Justice Plan Prolific and Priority Offenders (PPO) Strategy CF Plan 2005/08 Connexions Local Delivery Plan Homelessness strategy Children's Fund
4.2.1	Review the working of the joint protocol with the Youth Offending Service in light of the number of offenders who are looked after.	2006/07		

Priority Reference	Actions	Timescale	Responsible Organisation	Linkages
PC 4.3	Develop positive relationships and choosing not to bully and discriminate			
4.3.1	Research why the issue of bullying is still high on children and young people's agendas despite procedures put in place to tackle it and develop practice based on this research to ensure that children and young people are not bullied.	2006/07	Anti Bullying Co-ordinator	National Healthy Schools Programme (NHSP)
4.3.2	We will ensure that all children and young people from Black and Minority Ethnic (BME), travellers, asylum seeker and refugee communities have the opportunity to gain full access to services.	2006/07	Children's Services Race Equality Group Schools	EDP Priority 4 Actions 2 and 4
4.3.3	Develop a strategy for meeting the needs of all children and young people growing up in an increasingly diverse society.	2006/07	Children's Services Race Equality Group Schools	EDP Priority 4 Actions 2 and 4
4.3.4	Children and young people who are looked after are helped to make a positive contribution. In particular those with special needs, placed out of the authority area or involved in the criminal justice system.	2006/07	MALAP	MALAP Action Plan EDP Priority 4 Actions 2 and 3 Education of LAC Development Plan Dec 04 – March 06

Priority Reference	Actions	Timescale	Responsible Organisation	Linkages
PC 4.4	Develop self-confidence and successfully dealing with significant life changes and challenges			
4.4.1	Ensure that all children and young people have access to services that support the development of self-confidence, self worth and emotional resilience.	2006/07		National Healthy Schools Programme (NHSP) Behaviour and Education Support Team (BEST)
4.4.2	Ensure that all children and young people are equipped to face significant life changes and challenges with appropriate support.	2006/08		National Healthy Schools Programme (NHSP) Strategy and Action Plan for Children and Young People with Disabilities/SEN 2006/2009 BEST
4.4.3	Children and young people with additional needs are helped to make a positive contribution.	2006/7		Strategy and Action Plan for Children and Young People with Disabilities/SEN 2006/2009. National Healthy Schools Programme (NHSP) MALAP
PC 4.5	Develop enterprising behaviour.			
4.5.1	Research opportunities for children and young people to take part in volunteering and develop opportunities based on the outcomes.	2006/08		Community Strategy
4.5.2	Develop opportunities for peer mentoring.	2006/08		National Healthy Schools Programme (NHSP)

CHILDREN AND YOUNG PEOPLE'S PLAN

A Strategic Plan for the Provision of Services to the
Children and Young People of Hartlepool

April 2006 – March 2009

PART 6

ACHIEVE ECONOMIC WELL-BEING

DRAFT 2 JANUARY 2006

OUTCOME: *Achieve Economic Well-Being*

Our vision for this outcome in Hartlepool is that children and young people will achieve the qualifications, develop the skills and be given the necessary life experiences to enable them to have full and active adult lives. Also, that all services will work collaboratively to ensure children and young people will have opportunities to succeed in their chosen career and live in households free from poverty.

Children and young people tell us:

- that education should be interesting and relevant.
- going to college and university is important to young people.
- that you should do well in school – “the best you can”.
- that being in control of your own future is important.
- having a good job is important to young people.
- that help should be provided to allow access to a wider range of job opportunities.
- that things which make your life better are important.
- having a driving licence is valued by young people, helping them become independent.
- that young people should be supported to manage issues relating to personal relationships.
- looked after children should be supported in accessing decent housing.

Parents / carers and our partners tell us:

- that we should recognise and value the work of our partners.
- help should be provided for young people when they enter post 16 education, training and employment.
- young people should be prepared for looking after a home.
- we should monitor the DfES target for the number of young people whose economic/learning outcome is unknown.
- help should be provided for Looked After Children to enable them to progress to higher education.
- young people with a disability should be supported in exploring work and training opportunities as part of the transition process.
- parents with disabled children should be supported to enable them to work.

The Government's National Priorities are:

1. Action is taken by partners to support families in maximising their economic well-being.
2. Young people 11-19 are helped to prepare for working life.
3. Action is taken to ensure that 14-19 education is planned and delivered in a coordinated way and to ensure that education and training (16-19) is of good quality.
4. Community regeneration initiatives address the needs of children and young people.
5. Action is taken to ensure that young people have decent homes.
6. Children and young people who are looked after are helped to achieve economic well-being.
7. Children and young people with learning difficulties and/or disabilities are helped to achieve economic well-being.

Our own assessment tells us:

- that the services that contribute and support children and young people to achieve economic well-being in Hartlepool can be judged to be good. Within the phase of 14-19 and for SEN provision, some services consistently deliver above minimum requirements. There is some innovative practice, which is cost-effective and makes a good contribution to the wider outcomes for the community. In relation to children and young people who are looked after, services are satisfactory with some good features.

In relation to engaging in further education, employment or training on leaving school our own assessment found that Hartlepool was making good progress and was above statistical neighbours :

- the proportion of 16–19 year-olds in education or training is good and the number of young people classified as not in education, employment or training (NEET) is below statistical neighbours.
- in Hartlepool there was a 31% reduction in NEET between 2002-2004 compared to 23% in the Tees Valley and 14% nationally. The number of young people classified as NEET has fallen from 14.3% in 2004 to 8.5% in 2005.
- of the 156 teenage mothers known to the Department of Health in Hartlepool during 2004-05, 73 are known to Connexions with 9% actively engaged in education or training.
- the proportion of young offenders in education or training in Hartlepool (April-September 2005) is 85%. This is well above the North East average of 75.3, the Youth Offending Service (YOS) Family Group average of 76.4%. and the National average of 75.2%, but below the government target of 90%.
- Tees Valley Local Learning and Skills Council (TVLLSC) data indicates improved retention rates for 16, 17 and 18 year olds on education and training programmes in Hartlepool between 2000-01 (81%) and 2003-04 (88%).
- the success rates of 16–19 year-olds in education or training In Hartlepool has improved from 61% in 2000-01 to 71% in 2003-04.
- performance of young people not included in the Forvus returns for 16-19 year olds shows continued improvement. The combined success data for short and long courses has improved from 71% in 2001/02 to 75% in 2003/04.

- the perception of 16–19 year olds of how well they are learning at Hartlepool Sixth Form College for 2004-05 indicates a high level of student satisfaction with 90% of students stating that they would recommend the college to a friend and 98% stated that they had a good relationship with tutors.
- 84% of students at Hartlepool College of Further Education agreed or strongly agreed that support given by teachers for assignments and examinations was helpful and 86% found teachers and support staff helpful and friendly.
- the number of young people applying to higher education has increased by 23% in the last four years. The number of young people attending Higher Education Institutions (HEI) has increased from 1,076 in 2001 to 1,332 in 2005, which is in line with increases nationally.

In relation to looked after children achieving economic well-being:

- the number of care leavers in education, employment and training is good and there are plans to further strengthen multi-agency support.
- a specialist team (Leaving Care Team) has been established which has impacted positively on the number of looked after young people entering further and higher education. All eligible, relevant and formerly relevant young people have pathway plans and are allocated a personal adviser.
- the number of young people in employment, education or training at age 19 has improved from 45.3% in 2001/02 to 67.3% in 2004/05. This is above the national average.
- strategies to engage young people in education are good. 82% of eligible pupils (16-17 year olds) are in education settings.
- strategies to support young people in further and higher education are good. 26% of former relevant young people were supported into further and higher education in 2004. 31% of eligible, relevant and former relevant young people are NEET. This is unsatisfactory and improvement plans are being implemented.

In relation to children and young people with learning difficulties and /or disabilities achieving economic well-being, children and young people in Hartlepool make good progress.

- all year 9 pupils with statements participate in a transition review involving Connexions, Health and Children's Services. 100% of pupils with statements have a transition plan.
- all mainstream secondary schools are developing accreditation for SEN pupils for whom GCSE is not appropriate/accessable.
- quality of education at Catcote School is good.
- there is a strong emphasis on work related learning in Catcote School, which has introduced facilities for hairdressing, horticulture, and office practice and retail/customer service. This allows all students access to in-house work experience.
- all pupils in mainstream schools classified as having SEN have access to work experience.
- we recognise the need to increase the number of children and their families accessing Direct Payments and to ensure that all children with disabilities aged 14+ have a transition plan to support their move to Adult Services.

In relation to being ready for employment, children and young people in Hartlepool make good progress:

- the quality of 14-19 year olds is good with average point scores for students entering GCSE, A/AS and vocational education well above statistical neighbours and in line with national averages.
- performance of schools, colleges and training providers is improving. OfSTED Section 10 inspections of all secondary schools found their provision to be at least satisfactory and often good. OfSTED and ALI reports indicate that partner organisations had good or very good leadership and management with good levels of achievement and teaching.
- The percentage of 16 year olds achieving 5A*-C has risen consistently above national rate of increase for the last four years. The attainment gap for Hartlepool compared to national averages, narrowed from 13% in 2000 to 4% in 2005.
- the percentage of 16 year olds achieving 5A*- G and 1A*- G is just below national averages.
- Forvus data shows at least satisfactory improvement during the period 2001-2004. The two major providers of A Level courses consistently perform higher than national averages for average points score per student.
- value added (16-19) performance is good. In 2003/04 Hartlepool College of Further Education recorded value added for 31 of the 43 students aged 16-19 who took A Levels. At Hartlepool Sixth Form College the overall Advanced Level Information System (ALIS) value added data for the college shows that students achieve a full grade above predicted performance based on GCSE outcomes.
- all partner organisations have robust and rigorous quality assurance mechanisms, e.g. school self-evaluation, business excellence models etc.
- the peer review of the Excellence in Cities programme graded the overall quality of the programme as grade 2 (very good).
- there has been an expansion of vocational education pre-16, e.g. 396 14-16 year olds were engaged in the Increased Flexibility Programme in 2004-05 compared to 309 in 2003. A Young Apprenticeships (pilot) Programme has been developed and the target for recruitment to the programme (20) has been achieved. Work-related learning and enterprise education is well established in schools and the quality is at least good.
- permanent exclusions of 14-16 year olds have fallen dramatically since 2002 and the number of days lost to fixed term exclusion for the same age group has fallen from 2,079 in 2002 to 1,756 in 2004/05.
- secondary school attendance improved from 90.5% in 2000/01 to 91.9% in 2003/04.
- the Local Learning and Skills Council and the Local Authority work collaboratively to ensure 14-19 education is planned and delivered in a co-ordinated way. The Assistant Director of Children's Services with responsibility for School Improvement chairs the Hartlepool 14-19 Strategic Board.
- all partners have agreed a 14-19 strategy. The strategy identifies six key challenges for developing education and training into the future; there is increasing coherence to the planning of the 14-19 curriculum as a result of an Area Wide Action Plan (2001-2005) and a 14-19 Operational Plan (2005 onwards) which takes forward the 14-19 Strategy. All schools, colleges and other partners have shared their strategic plans and to improve coherence and synergy the LA has mapped each partner's priorities to the 14-19 Strategy.

- the LA has audited and mapped all 14-19 provision in Hartlepool, which has led to improved knowledge and better co-ordination of the pre-16 offer to pupils by post-16 providers. For example, all colleges and work-based training providers have offered a joint menu and a shared pricing policy for 2005/06.
- actions are taken to ensure 14-19 provision is of good quality, including involving young people in evaluating the quality of provision and collaborative activity, e.g. Quality Data Processing (QDP) questionnaire to evaluate the Increased Flexibility Support Programme.
- a wide range of support to improve education and training has been provided, such as Level 2 Initiative Funding, focused on retention and achievement.
- Measures have been implemented which will ensure improvements in the quality of teaching and learning: a key priority in the 14-19 Operational Plan.
- rigorous monitoring of the performance of schools has taken place, leading to subsequent intervention and support action to improve pupil outcomes.

In relation to children and young people living in decent homes and sustainable communities, Hartlepool has taken positive action to improve housing and communities:

- Neighbourhood Renewal Fund (NRF) and New Deal for Communities (NDC) initiatives (£53.8. million over 10 years) are targeted at the most needy areas with £5.5 million allocated to address educational and employability themes. Two Community Learning Centres have been developed on school premises.
- residents, including children and young people, are involved at all stages in the identification of need and the planning, management and review of community regeneration initiatives e.g. Café 177.
- a Work Related Learning (WRL) co-ordinator promotes vocational curriculum at Key Stage 4 and has developed new programmes for students in NDC wards.
- action has been taken to maximise the proportion of children and young people living in homes that meet the Decent Homes Standard by planning new accommodation and the demolition of substandard stock.
- in the last two years only one incident was recorded of a family staying in bed and breakfast accommodation.
- in the last two years there were no incidents of a family being placed in hotel accommodation.
- teenage parents, unable to live with family or partner, are offered supervised, semi-independent housing with support at Anna Court in Hartlepool, subject to availability.
- a floating support service is available to assist clients of the teenage pregnancy unit.
- young people leaving care are assisted in finding suitable accommodation.

In relation to the number of children and young people having access to transport / material goods and those living in households free from low income, Hartlepool is below national and local averages:

- in Hartlepool 33.3% of children live in families who receive key benefits; this is above the Tees Valley average of 30.1% and 9.5% above the national average of 23.8%.
- in Hartlepool the proportion of children living in households where no one is working is

25.9%; this is above the Tees Valley average of 23.7% and 8.3% above national average of 17.6%.

- parents and carers are informed about the range of childcare facilities available.
- planned and affordable childcare is available to all Hartlepool residents including Sure Start provision.
- in 2004-05 all OfSTED Inspections found childcare to be at least satisfactory or above.

Things we do well:

- The quality of education for 14-19 year olds is good.
- Average point scores for students entering GCSE, A/AS and vocational education well above statistical neighbours.
- The number of care leavers in education, employment and training is good.
- 14-19 education is planned and delivered in a co-ordinated way.
- Significant increases in young people accessing higher education.
- Good progress made in reducing the number of young people classified as NEET.
- Quality of SEN provision including vocational education.
- Innovative practice in developing vocational education.
- Strategies to support teenage parents.
- Community improvement initiatives.
- The range of child care provision available.

To continue to improve we will:

- ensure that education and training is planned in a co-ordinated manner involving all partners.
- ensure that child care opportunities are available for all residents of Hartlepool.
- ensure that all Key Stage 4 pupils have opportunities for vocational studies and work experience.
- ensure that all young people aged 13-19 will have impartial careers advice and guidance.
- ensure that all young people are prepared for working life.
- continue to support regeneration initiatives which support the needs of children and young people.
- continue to take action to improve the quality of housing.
- continue to support looked after children to achieve economic well-being.
- continue to support children who have learning difficulties and or disabilities to achieve economic well-being.

Things we can do better are:

- Increase the number of children and their families accessing Direct Payments.
- Ensure that all children with disabilities aged 14+ have a transition plan to support their move to Adult Services.

In order to do our best for all children and young people we will deliver the national priorities and contribute to the delivery of the Hartlepool Community Strategy. In particular we will:

- Increase the number of children and their families accessing Direct Payments.
- Ensure that all children with disabilities aged 14+ have a transition plan to support their move to Adult Services.

In recognition of the additional needs of some children and young people we will:

- ensure provision is planned which is sensitive to race and equality.
- continue to plan education and training to ensure any underachieving groups receive targeted support.
- ensure all young people in care are encouraged and supported in engaging in education training and employment.
- ensure that personal and welfare support are available to all looked after children and care leavers.
- continue to provide financial support for looked after children and care leavers aged 16-19 and up to 24 if in higher education.
- ensure young people supervised by youth offending are engaged in education, training or employment.
- continue to ensure that care leavers are provided with suitable accommodation.
- ensure that a multi agency transition takes place for all year 9 pupils with special educational needs and /or disabilities and that a transition plan is produced.

PLAN				
Priority Reference	Actions	Timescale	Responsible Organisation	Linkages
AEWB 5.1	Action is taken by partners in Hartlepool to support families in maximising their economic well-being			
5.1.1	Parents and carers are informed about the range of childcare facilities available to them.	April 2006 - March 2009	Director of Children's Services Early Years Team Sure Start	EDP Sure Start Hartlepool Implementation Plan (SSHIP)
5.1.2	Parents and carers are encouraged to take up, in and out of work, benefit and tax credit entitlements.	April 2006 - March 2009	Director of Children's Services Early Years Team Sure Start	EDP Sure Start Hartlepool Implementation Plan (SSHIP)
5.1.3	Partners are aware of and minimise the financial stress of childhood activity on families, such as cost of school trips, transport, and entry to libraries and sports facilities.	April 2006 - March 2009	Director of Children's Services Early Years Team	Local Authority Strategic Plan EDP Sure Start Hartlepool Implementation Plan (SSHIP)
5.1.4	Planned and affordable childcare provision is available to all residents in Hartlepool.	April 2006 - March 2009	Director of Children's Services Early Years Team Sure Start	EDP Sure Start Hartlepool Implementation Plan (SSHIP)
5.1.5	Educational Maintenance Allowance (EMA) is widely publicised.	April 2006 - March 2009	Director of Children's Services EMA Team	EDP

Priority Reference	Actions	Timescale	Responsible Organisation	Linkages
AEWB 5.2	Young people 11-19 in Hartlepool are helped to prepare for working life.			
5.2.1	Young people are supported in developing self-confidence, team working skills and enterprise.	April 2006 - March 2009	Assistant Director of Children's Services Connexions Locality Manager Head Teachers, College Principals, Managers of Work Based Training Providers	EDP Priority 3 Institutional Work Related Learning (WRL) and Enterprise Plans BEST NHSP
5.2.2	Steps are taken to ensure that young people are financially literate.	April 2006 - March 2009	Assistant Director of Children's Services Connexions Locality Manager Head Teachers, College Principals, Managers Work Based Training Providers	EDP Priority 3 Institutional WRL and Enterprise Plans Credit Union Forum
5.2.3	Opportunities for vocational studies are available for all Key Stage 4 pupils.	April 2006 - March 2009	Assistant Director of Children's Services Head Teachers, College Principals, Managers of Work Based Training Providers	EDP Priority 3 14-19 Plan Institutional Operational Plans
5.2.4	All Key Stage 4 pupils undertake work related learning and useful work experience.	April 2006 - March 2009	Assistant Director of Children's Services Head Teachers Learn to Work Manager	EDP Priority 3 14-19 Plan Institutional WRL and Enterprise Plans learn2work Plan
5.2.5	Careers education and guidance is provided to all pupils in Key Stage 3 and 4.	April 2006 - March 2009	Assistant Director of Children's Services Connexions Locality Manager Head Teachers	EDP Priority 3 Connexions Local Delivery Plan School Development Plans

Priority Reference	Actions	Timescale	Responsible Organisation	Linkages
5.2.6	Impartial information, advice and guidance on education, training and employment opportunities is available to all 13-19 year olds.	April 2006 - March 2009	Assistant Director of Children's Services Connexions Locality Manager Head Teachers, College Principals, Managers of Work Based Training Providers	EDP Priority 3 Connexions Local Delivery Plan
5.2.7	Personal, financial, welfare and advocacy support is available to 16-19 year-olds to support their education or training.	April 2006 - March 2009	Connexions Locality Manager EMA Team College Principals, Managers Work Based Training Providers	Connexions Local Delivery Plan Institutional Development Plans
AEWB 5.3	Action is taken to ensure that 14-19 education and training in Hartlepool is planned and delivered in a coordinated way, and to ensure that education (16-19) is of good quality.			
5.3.1	14-19 Strategic Board works collaboratively in response to the needs of young people and supports the work of voluntary agencies.	April 2006 - March 2009	Strategic Board Members Assistant Director Children's Services Hartlepool Voluntary Development Agency	EDP Priority 3 14-19 Operational Plan Hartlepool Voluntary Development Agency Plan
5.3.2	Provision is planned which is sensitive to race and equality.	April 2006 - March 2009	Strategic Board Members Assistant Director Children's Services	EDP Priority 3 14-19 Operational Plan
5.3.3	Provision is planned to ensure underachieving groups of young people receive targeted support.	April 2006 - March 2009	Strategic Board Members Assistant Director Children's Services	EDP Priority 3 14-19 Operational Plan MALAP
5.3.4	Provision is planned to ensure the number of young people classified as Not in Education, Employment or Training (NEET) is reduced.	April 2006 - March 2007	Strategic Board Members Assistant Director Children's Services Connexions Locality Manager	EDP Priority 3 14-19 Operational Plan Connexions Local Delivery Plan DfES target

Priority Reference	Actions	Timescale	Responsible Organisation	Linkages
5.3.5	Progression routes are available for all Adult Learning Inspectorate (ALI) areas of learning.	April 2006 - March 2009	Strategic Board Members Tees Valley Local Learning and Skills Council (TVLLSC)	14-19 Operational Plan Tees Valley Local Learning and Skills Council (TVLLSC)
5.3.6	Provision is sufficiently flexible to enable young people to review and revise the choices they have made.	April 2006 - March 2009	Strategic Board Members	14-19 Operational Plan Tees Valley Local Learning and Skills Council
AEWB 5.4	Hartlepool community regeneration initiatives address the needs of children and young people.			
5.4.1	Initiatives are targeted at the most needy areas and address the broad range of family needs in an integrated way.	April 2006 - March 2009	Head of Children's Services New Deal for Communities Team Neighbourhood Regeneration Team Residents Associations /Community Organisations	Local Authority Strategic Plan New Deal for Communities Plan Neighbourhood Regeneration Plan
5.4.2	Residents, including children and young people, are involved at all stages in the identification of need and the planning, management and review of community regeneration initiatives.	April 2006 - March 2009	Head of Children's Services New Deal for Communities Team Neighbourhood Regeneration Team Residents Associations /Community Organisations	Local Authority Strategic Plan New Deal for Communities Plan Neighbourhood Regeneration Plan
AEWB 5.5	Action is taken in Hartlepool to ensure that young people have decent housing			
5.5.1	Action is taken to maximise the proportion of children and young people living in homes that meet the Decent Homes Standard.	April 2006 - March 2009	Director of Children's Services Strategic Housing Team	Local Authority Strategic Plan The Housing Strategy The Housing Renewal Strategy

Priority Reference	Actions	Timescale	Responsible Organisation	Linkages
5.5.2	Support is available for families and young people seeking to transfer within, or enter, the social housing market.	April 2006 - March 2009	Director of Children's Services Strategic Housing Team	Local Authority Strategic Plan The Housing Strategy The Housing Renewal Strategy
5.5.3	The use of temporary accommodation for families with children and young people is minimised (NSF 1).	April 2006 - March 2009	Director of Children's Services Strategic Housing Team	Local Authority Strategic Plan The Housing Strategy The Housing Renewal Strategy Homelessness Strategy
5.5.4	Teenage parents unable to live with family or partner are offered supervised, semi-independent housing with support.	April 2006 - March 2009	Director of Children's Services Strategic Housing Team	Local Authority Strategic Plan The Housing Strategy The Housing Renewal Strategy
AEWB 5.6	Children and young people in Hartlepool who are looked after are helped to achieve economic well-being			
5.6.1	All young people over the age of 16 to have completed pathway plans.	April 2006 - March 2009	Director of Children's Services Leaving Care Team	EDP Priority 3/4 Connexions Local Delivery Plan MALAP STRB Plan
5.6.2	All young people in care are encouraged and supported in engaging in education training and or employment.	April 2006 - March 2009	Director of Children's Services Leaving Care Team Young Persons Team Connexions Locality Manager	EDP Priority 3/4 Connexions Local Delivery Plan MALAP

Priority Reference	Actions	Timescale	Responsible Organisation	Linkages
5.6.3	Personal and welfare support are available to all looked after children and care-leavers, aged 16-19 to support their education, training or employment. Financial support extended up until 24 if in higher education (degree).	April 2006 - March 2009	Director of Children's Services Leaving Care Team Young Persons Team	EDP Priority 3/4 Connexions Local Delivery Plan MALAP STRB Plan
5.6.4	Provision is made to ensure young people supervised by Youth Offending Service are engaged in education, training or employment.	April 2006 - March 2009	Youth Offending Service Connexions Locality Manager	Youth Offending Service Plan Connexions Local Delivery Plan
5.6.5	Care leavers are provided with suitable accommodation, including residential or sheltered provision.	April 2006 - March 2009	Leaving Care Team Homelessness Strategy Manager	MALAP
AEWB 5.7	Children and young people in Hartlepool who have learning difficulties and/or disabilities are helped to achieve economic well-being.			
5.7.1	A multi-agency transition review takes place for all Year 9 pupils with special educational needs and /or disabilities and a transition plan is produced.	April 2006 - March 2009	Assistant Director Children's Services Head Teachers Connexions Locality Manager	EDP Priority 3 SEN/Disability Plan Connexions Local Delivery Plan
5.7.2	Children and young people receive the advice they need for education and training post-16, are properly prepared and given support they need.	April 2006 - March 2009	Assistant Director Children's Services Head Teachers College Principals Connexions Locality Manager	EDP Priority 3 SEN/Disability Plan Connexions Local Delivery Plan

Priority Reference	Actions	Timescale	Responsible Organisation	Linkages
5.7.3	Information and support is provided on welfare and benefit entitlement.	April 2006 - March 2009	Assistant Director Children's Services Head Teachers College Principals EMA Team Connexions Locality Manager	EDP Priority 3 SEN/Disability Plan Connexions Local Delivery Plan
5.7.4	Health, advice, guidance and support is provided for all Hartlepool children with disabilities as part of the transition process.	April 2006 - March 2009	Assistant Director Children's Services Head Teachers College Principals PCT Connexions Locality Manager	EDP Priority 3 SEN/Disability Plan Connexions Local Delivery Plan
5.7.5	Direct payments are available and promoted for families with disabled children and/or disabled 16 and 17 year olds.	April 2006 - March 2009	Assistant Director of Children's services	SEN/Disability plan

CHILDREN AND YOUNG PEOPLE'S PLAN

A Strategic Plan for the Provision of Services to the
Children and Young People of Hartlepool

April 2006 – March 2009

PART 7

SUPPLEMENTARY INFORMATION

DRAFT 2 JANUARY 2006

Resource Implications of Implementing the Plan

The Children and Young People's Strategic Partnership (CYPSP)

The Children and Young Peoples Strategic Partnership's was established in 2005 and its primary purpose is to provide a forum within which consideration will be given to the way in which children and young people's services could be developed and be improved and to make recommendations to the Executive Board. The remit of the CYPSP includes:

- the promotion of positive outcomes for all children and young people and to seek to prevent children and young people experiencing negative outcomes and social exclusion;
- contribute to a multi-agency, strategic approach to the commissioning of services;
- lead and promote effective consultation with service providers (statutory and non-statutory), users of services and carers.

The development of a Children's Trust

There is a statutory duty on agencies and bodies delivering children's services to cooperate in arrangements to improve the wellbeing of children and young people in their area. This duty will manifest itself in setting up children's trusts designed to improve outcomes for all children and young people through integration at all levels; frontline delivery; processes; strategies; and all supported by inter-agency governance arrangements.

A critical element of service integration will be the pooling of budgets and resources under the powers of either Section 31 of the Health Act 1999 or the Children Act 2004. Through the use of these powers partners will have the ability to be more flexible in targeting funding to where children and young people's needs can best be met. There is an expectation that all areas will have a children's trust in place by 2008.

The development of a children's trust in Hartlepool is a crucial element of the Children and Young People's Plan for Hartlepool. Whilst working within the current government timeframe for the establishment of children's trusts by April 2008, there are however, a number of issues that will have an effect upon the establishment of a trust locally, these include:

- The newly established Children's Services Department (August 2006), which is developing revised working practices and opportunities for the integration of service delivery, which include Children's Centres and Extended Schools;
- The impact of the proposed restructure of primary care trusts, which may have a negative impact on the pace of change in the short term and could hinder partnership arrangements;
- On the other hand, partnership working has been recognised as one of the many strengths of Hartlepool and this should be strengthened further with the implementation of the Local Area Agreement in April 2006.

Local Area Agreements

The Hartlepool Partnership has been successful in applying to join Round 2 of Local Area Agreement (LAA) development and the award of single pot status.

The Partnership has proposed that the LAA should be structured to reflect the Community Strategy. The LAA will therefore be structured with these seven themes:

- Jobs and the Economy
- Lifelong Learning and Skills
- Health and Care
- Community Safety
- Environment and Housing
- Culture and Leisure
- Strengthening Communities

The seven themes provide alignment with established priorities in the Community Strategy and provide the flexibility to accommodate cross cutting agendas including services for children and young people. These themes are, however, not intended to be rigid blocks, rather a convenient and locally appropriate structure to organise activity, accountability and performance management. Cross cutting issues will be emphasised and the outcomes and expenditure will be presented as a single entity single pot.

The Hartlepool Partnership has sought flexibility to allocate resources to priorities, providing opportunities for working across organisational boundaries enabling co-ordinated approaches to delivery of the Every Child Matters five outcome areas, as well as those sought by our community.

The establishment of the Children and Young People's Strategic Partnership and the requirement for the production of a Children and Young People's Plan have led to proposals for a review by the Hartlepool Partnership, to ensure that policy documents, partnership structures and governance arrangements are in place and fit for purpose. Detailed proposals will be brought before the partnership during 2006.

For the financial year 2006/07, financial resources will be distributed through the pre-existing routes e.g. local authority and health trusts. In 2007/08 funding will be channelled through the seven Community Strategy themes set out above. At the present it is anticipated that there will be no significant change in the allocation of resources; however, there may be some refocusing as a result of identified need and to contribute to the improvement of outcomes.

The Children and Young People's Strategic Partnership will work with the Hartlepool Partnership during 2006 and 2007 to develop appropriate commissioning and contracting strategies for providers from across all sectors.

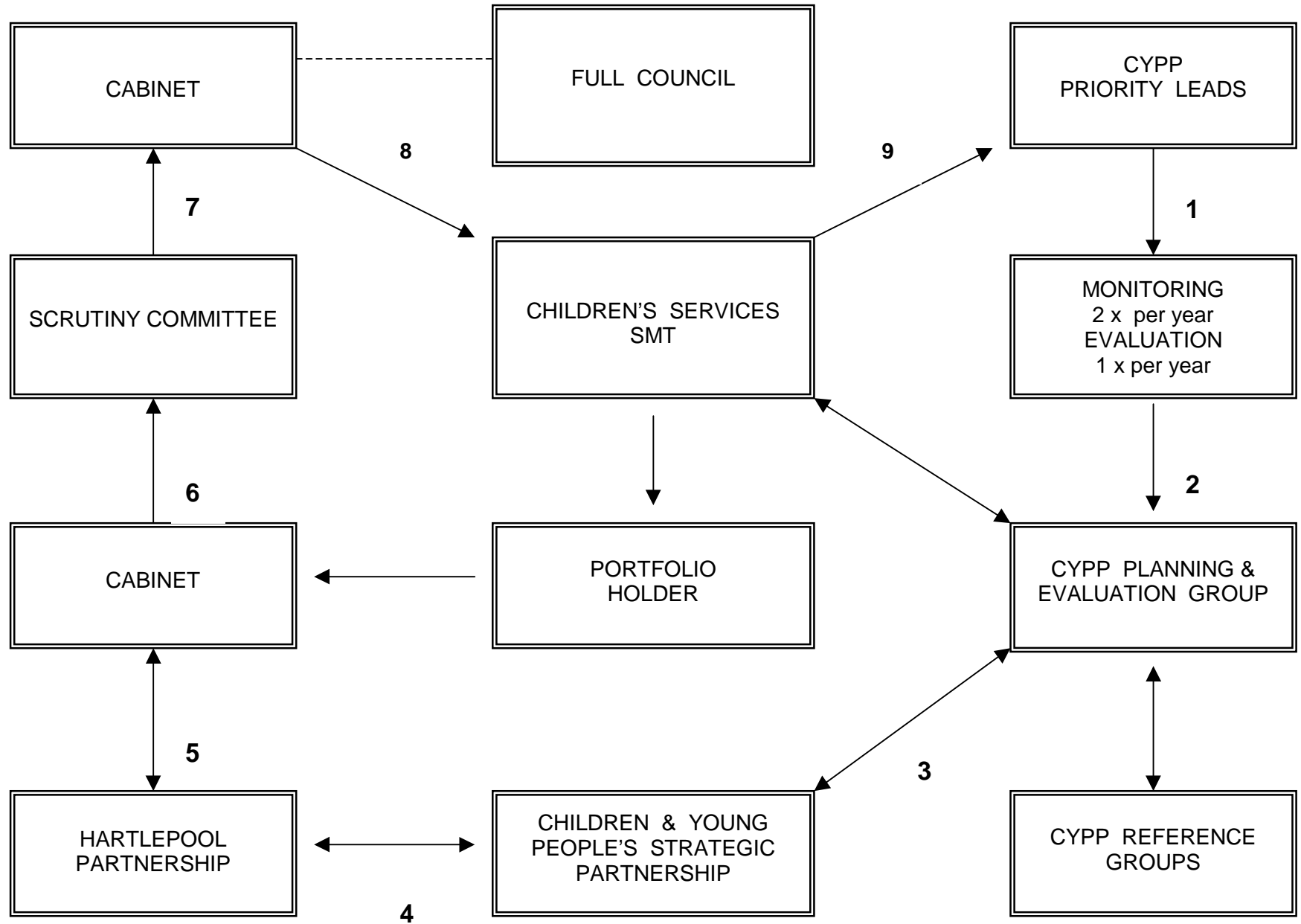
Children's Workforce Development

The impact of services for children and young people is largely dependent on the quality and skills of the people who provide these services. The workforce is therefore crucial, in delivering the Children and Young People's Plan and a workforce strategy that addresses local and national priorities will be prepared during 2006/07 to underpin the Plan.

Arrangements for Monitoring and Evaluating the Plan

Each of the outcome areas of the Children and Young People's Plan has a lead officer who is responsible for ensuring that appropriate action plans are developed to deliver the priorities. Each action has a responsible officer who is designated to ensure the programme is delivered. The actions are part of the service planning cycle and delivery is monitored via the individual organisation's performance management process, where the actions and priorities are key deliverables for individual officers.

Monitoring the progress of the Plan is undertaken twice a year with outcome lead officers presenting a report on progress to the Children's Services Planning and Evaluation Group. Evaluation is undertaken once a year with analysis based on the success criteria in the Plan. Monitoring reports are half yearly in October and March. Evaluation is designed to coincide with the review of the Plan, the annual self assessment cycle and the annual performance assessment. Evaluation reports are to be presented to the Planning and Evaluation Group in January to allow them to inform the Plan's review and to be considered by the agencies involved. The following diagram indicates the process involved.



Further Information

It is hoped that this Plan will be endorsed by all partners and partner organisations and formally published by Hartlepool Borough Council in April 2006.

Once the Plan has been approved, a number of different versions will be produced, to ensure that the Plan is accessible to as wide a range of children, young people and adults as possible.

The Plan will be available electronically at www.hartlepool.gov.uk/childrensservices and all early drafts of the Plan will also be posted here along with reports of the outcomes of consultation exercises and activities.

Any questions or queries can be sent to cypp@hartlepool.gov.uk , or in writing to:

Ian Merritt
Senior Children's Services Officer
Hartlepool Borough Council
Children's Services Department
Civic Centre
Victoria Road
Hartlepool
TS24 8AY

Telephone: 01429 523774 or Fax 01429 523750
E-Mail: ian.merritt@hartlepool.gov.uk

“The Bookcase”

Appendix 1

The table shown below details the different plans at work in Hartlepool that will affect children, young people, parents and carers.

Planning Level 3	Hartlepool Community Strategy			Corporate Performance Plan	
Planning Level 2	<u>Children and Young People’s Plan</u>				
Planning Level 1	Community Safety Strategy	Strategy for Children with Disabilities/ SEN Action Plan	Children’s Centres/Extended Schools Strategy	Primary Care Trust Local Delivery Plan	Education Development Plan
	Local Policing Plan	Transitions Policy	Play Strategy	Public Health Strategy	Lifelong Learning Partnership 14-19 Strategy
	Youth Justice Plan	Corporate Parent Forum Action Plan	Children’s Fund Plan	Children and Adolescent Mental Health Strategy	Connexions Local Delivery Plan
	Young Person’s Substance Misuse Plans	MALAP Action Plan	Hartlepool Housing Strategy	Healthy Schools Programme Plan	
	Probation Area Annual Plan	Carers Strategy	Local Transport Plan		
	Service Specific – Implementation and Action Plans (Business Plans)				

Glossary of acronyms used in this Plan

Appendix 2

A (Level)	Advanced (Level)	LAC	Looked After Children
A2L	Access to Learning	LPSA	Local Public Service Agreement
AEWB	Achieve Economic Well-Being	LSCB	Local Safeguarding Children Board
ALI	Adult Learning Inspectorate	MALAP	Multi Agency Looked After Partnership
ALIS	Advanced Level Information System	NDC	New Deal for Communities
APA	Annual Performance Assessment	NEET	Not in Education, Employment or Training
AS (Level)	Advanced Subsidiary (Level)	NHS	National Health Service
AVC	Advanced Vocational Certificate	NHSP	National Healthy Schools Programme
BEST	Behaviour and Education Support Team	NRF	Neighbourhood Renewal Fund
BH	Be Healthy	NSF	National Service Framework
BME	Black and Minority Ethnic (Community)	OFSTED	Office for Standards in Education
BVPI	Best Value Performance Indicator	PC	Make a Positive Contribution
CAF	Common Assessment Framework	PCT	Primary Care Trust
CAMHS	Children and Adolescent Mental Health Service	PE	Physical Education
CF	Children's Fund	PESSCL	Physical Education School Sports and Club Links Strategy
CRB	Criminal Records Bureau	PPO	Prolific and Priority Offenders
CYPSP	Children and Young People's Strategic Partnership	QCA	Qualifications and Curriculum Authority
DfES	Department for Education and Skills	QDP	Quality Data Processing
E & A	Enjoy and Achieve	SEAL	Social and Emotional Aspects of Learning
EAL	English as an Additional Language	SEN	Special Educational Needs
EDP	Education Development Plan	SENDIST	Special Educational Needs and Disability Tribunal
EMA	Educational Maintenance Allowance	SS	Stay Safe
FE	Further Education	SSHIP	Sure Start Hartlepool Implementation Plan
GCSE	General Certificate of Secondary Education (normally at 16)	STRB	School Teachers Review Body
HBC	Hartlepool Borough Council	TVLLSC	Tees Valley Local Learning and Skills Council
HEI	Higher Education Institution	WRL	Work Related Learning
ICT	Information and Communications Technology	YOS	Youth Offending Service
IMD	Index of Multiple Deprivation		
ISA	Information Sharing and Assessment		
KS1	Key Stage 1 (Ages 5-7)		
KS2	Key Stage 2 (Ages 7-11)		
KS3	Key Stage 3 (Ages 11-14)		
KS4	Key Stage 4 (Ages 14-16)		
LA	Local Authority		
LAA	Local Area Agreement		