

NEIGHBOURHOOD SERVICES SCRUTINY FORUM AGENDA



Monday 19 January 2009

at 4.00pm

**in the Council Chamber,
Civic Centre, Hartlepool**

MEMBERS: NEIGHBOURHOOD SERVICES SCRUTINY FORUM:

Councillors Akers-Belcher, Barker, R W Cook, Coward, Cranney, Fleming, McKenna, Worthy and Wright

Resident Representatives: John Cambridge and Brenda Loynes

1. APOLOGIES FOR ABSENCE

2. TO RECEIVE ANY DECLARATIONS OF INTEREST BY MEMBERS

3. MINUTES

No items.

4. RESPONSES FROM THE COUNCIL, THE EXECUTIVE OR COMMITTEES OF THE COUNCIL TO FINAL REPORTS OF THIS FORUM

No items.

5. CONSIDERATION OF REQUEST FOR SCRUTINY REVIEWS REFERRED VIA SCRUTINY CO-ORDINATING COMMITTEE

No items.

6. CONSIDERATION OF PROGRESS REPORTS/BUDGET AND POLICY FRAMEWORK DOCUMENTS

No items.

7. ITEMS FOR DISCUSSION

- 7.1 Six Monthly Monitoring of Agreed Neighbourhood Services Scrutiny Forum's Recommendations – *Scrutiny Support Officer*

Scrutiny Investigation into Coastal Defences and Shoreline Management in Hartlepool:

- 7.2 Scoping Report - *Scrutiny Support Officer*
- 7.3 Setting the Scene Presentation:
- (a) Covering Report – *Scrutiny Support Officer*
 - (b) Setting the Scene Presentation – *Director of Neighbourhood Services*
- 7.4 Evidence from the Council's Portfolio Holder for Neighbourhoods and Communities:
- (a) Covering Report – *Scrutiny Support Officer*
 - (b) Verbal evidence from the Portfolio Holder for Neighbourhoods and Communities (*subject to availability*)

8. ISSUES IDENTIFIED FROM FORWARD PLAN

No items

9. ANY OTHER ITEMS WHICH THE CHAIRMAN CONSIDERS ARE URGENT

ITEMS FOR INFORMATION

Date of next meeting Monday 2 March 2009 at 4.00 pm in the Council Chamber

NEIGHBOURHOOD SERVICES SCRUTINY FORUM

MINUTES

24 November 2008

The meeting commenced at 4.00 pm in the Civic Centre, Hartlepool

Present:

Councillor: Stephen Akers-Belcher (In the Chair)

Councillors: Caroline Barker, Rob Cook, Christopher McKenna, Gladys Worthy and Edna Wright.

Resident Representatives:

John Cambridge and Brenda Loynes

Officers:

Dave Stubbs, Director of Neighbourhood Services

Alastair Smith, Head of Technical Services

Paul Mitchinson, Highways Services Manager

Charlotte Burnham, Scrutiny Manager

Laura Starrs, Scrutiny Support Officer

Angela Hunter, Principal Democratic Services Officer

60. Apologies for Absence

Apologies for absence were received from resident representative Mary Green.

61. Declarations of interest by Members

None.

62. Minutes of the meeting held on 10 November 2008

Confirmed.

63. Responses from the Council, the Executive or Committees of the Council to Final Reports of this Forum

None.

64. Consideration of request for scrutiny reviews referred via Scrutiny Co-ordinating Committee

None.

65. Consideration of progress reports/budget and policy framework documents

None.

66. The Condition of the Highways in Hartlepool – Draft Final Report (*Neighbourhood Services Scrutiny Forum*)

The Chair presented the draft final report following the Forum's investigation into the Condition of the Highways in Hartlepool, the overall aim of which was to review the Council's approach to highway inspection and maintenance and to suggest areas of improvement to ensure the town's roads were maintained to an acceptable standard. During the course of the investigation, Members considered evidence from a wide variety of witnesses including:

- (i) Member of Parliament for Hartlepool
- (ii) Portfolio Holder for Neighbourhoods and Communities
- (iii) Highways Section
- (iv) Members of the public.

In addition to this Members undertook a visit to Barnsley Metropolitan Borough Council as they were awarded Beacon Status in recognition of excellence for their approach to highways maintenance.

Based on the evidence considered during the investigation, Members discussed the following recommendations as detailed in the report:

- (a) That the Council develops a strategy to achieve a planned approach to highways maintenance as opposed to a reactive approach;
- (b) That the Council strengthens existing working relations with the Utility Companies and continues to facilitate regular meetings to focus on common objectives aimed at improving standards;
- (c) That the Council develops a formal working arrangement with contactors to involve them at an earlier stage in the design, planning and preparation processes for future highway maintenance and scheme works;
- (d) That the Council explores the possibility of using re-cycled materials in schemes to reduce tender prices and to minimise the environmental impact;

- (e) That the Council explores opportunities to further promote / publicise the future maintenance works of both the Council and the Utility Companies to raise public awareness including the distribution of the Planned Maintenance Programme to Public Libraries / Buildings;
- (f) That Ward Councillors are provided with advance notification of any future maintenance and utility works due to be carried out in their respective Wards;
- (g) That the Council consults with local support groups and the public at set times of the year to improve the positioning of drop kerbs / tactile pavements;
- (h) That the income generated from the charges imposed on the Utility Companies be redirected into the highways maintenance budget;
- (i) That the Council reviews the 2009 / 2010 financial contribution from the Highways Service to the Insurance Fund and any reduction in such contribution be redirected to the highways maintenance budget; and
- (j) That the Council integrates the highways software system, 'Confirm' with the Customer Relationship Management System in order to improve the accuracy and efficiency of the monitoring and feed back arrangements for customer enquiries relating to highways maintenance.

The Chair thanked everyone involved in the investigation including the valued contribution made by all the members of the public who had participated in the investigation.

The Scrutiny Support Officer informed Members that the final report would be submitted to Scrutiny Co-ordinating Committee and submitted to Cabinet, mid-March 2009 once the department had formulated the action plan.

Decision

That the recommendations contained in the Draft Final Report on the investigation into the Condition of Highways be agreed in their entirety for submission to Scrutiny Co-ordinating Committee.

67. Issues identified from Forward Plan

None.

68. Any other items which the Chairman considers are urgent

None.

69. Items for Information

The next meeting of the Forum was to take place on 12 January 2008 to consider the budget as part of the budget consultation proposals with the meeting on 19 January 2009 considering the scoping of the Forum's investigation into the Coastal Defences.

The meeting concluded at 4.10 pm

CHAIRMAN

NEIGHBOURHOOD SERVICES SCRUTINY FORUM

MINUTES

12 January 2009

The meeting commenced at 4.00 pm in the Civic Centre, Hartlepool

Present:

Councillor: Stephen Akers-Belcher (In the Chair)

Councillors: Rob Cook and Gladys Worthy

Resident Representatives:
John Cambridge

Officers: Dave Stubbs, Director of Neighbourhood Services
Joan Wilkins, Scrutiny Support Officer
Angela Hunter, Principal Democratic Services Officer

70. Inquorate Meeting

In the absence of a quorum the Scrutiny Support Officer would prepare a report incorporating the comments made by the Members present on the Budget and Policy Framework Consultation Proposals 2009/10 for submission to the Scrutiny Co-ordinating Committee on 23 January 2009.

71. Apologies for Absence

Apologies for absence were received from Councillors Caroline Barker, Kevin Cranney and Tim Fleming.

72. Declarations of interest by Members

None.

73. Minutes of the meeting held on 24 November 2008

Due to the meeting being inquorate, confirmation of the minutes were deferred to the next meeting of the Forum.

74. Responses from the Council, the Executive or Committees of the Council to Final Reports of this Forum

None.

75. Consideration of request for scrutiny reviews referred via Scrutiny Co-ordinating Committee

None.

76. Consideration of progress reports/budget and policy framework documents – Neighbourhood Services Department: Budget and Policy Framework Consultation Proposals 2009/10 *(Scrutiny Support Officer)*

The Director of Neighbourhood Services introduced the report which included the Executive's finalised budget proposals for 2009/10. The Forum's views were requested to be fed back to Scrutiny Co-ordinating Committee to enable a response to be formulated and presented to Cabinet on 9 February 2009. Attached to the report were Appendices A to F, which included the departmental pressures, contingencies, terminating grants, priorities and efficiencies. The Director of Neighbourhood Services highlighted that there was an additional pressure in relation to concessionary fares of £500k and that the 3% savings would result in compulsory redundancies for several members of staff. Within the proposed efficiencies an increase in 10% through additional income by increasing burial and cremation charges was reported. The Director of Neighbourhood Services added that an additional 10% was required to enable the purchase of new cremators over the next 12 months.

A discussion ensued which covered the following areas:

Redundancies – A Member sought clarification on the number of redundancies that may be required as part of the proposed budget. The Director of Neighbourhood Services indicated that if 3% savings were to be implemented, 11 members of staff would be affected, however, should the additional 1% saving be required, this would increase to 17. The Director of Neighbourhood Services added that the Council's policy of redeployment would be utilised wherever possible.

Dial-a-Ride – Members were disappointed to note that the proposed additional 1% savings would involve the discontinuation of the Dial-a-Ride service. The Director of Neighbourhood Services echoed this disappointment confirming that the service was very well used with over 1,000 people using the Dial-a-Ride service, including disabled and vulnerable adults. It was also noted that

there were a limited number of disabled friendly taxi-cabs in the town, which resulted in a high proportion of people with disabilities using the service. The Director of Neighbourhood Services informed Members that there were a number of areas within the Dial-a-Ride service that could be examined to produce efficiencies, including an e-booking system should this service continue.

New Deal for Communities (NDC) Environmental Task Force – A Member sought clarification on whether this initiative would be rolled out across the town once NDC ended. The Director of Neighbourhood Services responded that at the appropriate time, the Council would decide where this initiative was deployed.

The Chair summarised the discussions reiterating that the Forum did not support the proposal to discontinue the Dial-a-Ride service as this would cause isolation to many people with disabilities and vulnerable people who rely on that service provision. In addition to this, Members were concerned at the distress to employees that would be caused by the proposed redundancies and asked that any possible additional detail in relation to these proposals be made available at the Scrutiny Co-ordinating Committee on the 23 January 2009.

Decision

- (i) That the Neighbourhood Services departmental pressures, contingencies, terminating grants and efficiencies as part of the Budget and Policy Framework consultation proposals for 2009/10 be noted.
- (ii) That the summary of the terminating grants, area based grants, working neighbourhood fund allocations and additional 1% proposed budget reduction be noted.
- (iii) That the comments made by the Forum as detailed above, be forwarded to the Scrutiny Coordinating Committee on 23 January 2009, including that the Forum did not support the proposed discontinuation of the Dial-a-Ride Service.

The meeting concluded at 4.30 pm.

CHAIRMAN

NEIGHBOURHOOD SERVICES SCRUTINY FORUM

19 January 2009



Report of: Scrutiny Support Officer

Subject: SIX MONTHLY MONITORING OF AGREED
NEIGHBOURHOOD SERVICES SCRUTINY
FORUM'S RECOMMENDATIONS

1. PURPOSE OF REPORT

- 1.1 To provide Members with the six monthly progress made on the delivery of the agreed scrutiny recommendations of this Forum since the 2005/06 Municipal Year.

2. BACKGROUND INFORMATION

- 2.1 In accordance with the agreed procedure, this report provides information of the progress made against investigations undertaken by the Forum since the 2005/06 Municipal Year.
- 2.2 In doing so, attached as **Appendix A** is a Summary Report that breaks down progress made by investigation and **Appendix B**, provides a detailed explanation of each recommendation that is either 'expected to achieve target' or 'not expected to achieve target'.
- 2.3 In summary, Members may wish to note that since the 2005/06 Municipal Year 93.3 % of this Forum's recommendations have been achieved, 4 % are expected to be achieved, 1.3 % are not expected to be achieved and 1.3 % which have either been rejected by the Executive or are no longer deliverable to due circumstances beyond the Authority's control.

3. RECOMMENDATION

- 3.1 That progress against the Neighbourhood Services Scrutiny Forum's agreed recommendations, since the 2005/06 Municipal Year, be noted and explored further where appropriate.

Contact Officer:- Laura Starrs – Scrutiny Support Officer
Chief Executive's Department - Corporate Strategy
Hartlepool Borough Council
Tel: 01429 523647
Email: laura.starrs@hartlepool.gov.uk

BACKGROUND PAPERS

No background papers were used in the preparation of this report.

Neighbourhood Services Scrutiny Forum**20mph Speed Limit Zones Outside of Schools**

G Target achieved 15

Hartlepool's Local Bus Service Provision

G Target achieved 15

A Expect to achieve target 1

Public Convenience Provision in Hartlepool

R Not expected to achieve target 1

N No longer deliverable 1

G Target achieved 27

School Meals

G Target achieved 4

A Expect to achieve target 1

Transportation Links to Hospital Services & Neighbourhood Services Dept.

G Target achieved 9

A Expect to achieve target 1

Scrutiny Recommendations (Not Completed) Monitoring Report

Appendix B

January 2009

Department: *

Scrutiny: Neighbourhood Services Scrutiny Forum

Division: *

Scrutiny Enquiry: *

N	No longer deliverable	1	1.3%
	Neighbourhood Services Scrutiny Forum	1	
R	Not expected to achieve target	1	1.3%
	Neighbourhood Services Scrutiny Forum	1	
A	Expect to achieve target	3	4.0%
	Neighbourhood Services Scrutiny Forum	3	
G	Target achieved	70	93.3%
	Neighbourhood Services Scrutiny Forum	70	
Total No. of Actions		75	

Scrutiny Recommendations (Not Completed) Monitoring Report

January 2009

Progress	Rec. No.	Recommendation	By When / Milestone	Update on progress	Lead Officer
----------	----------	----------------	---------------------	--------------------	--------------

SCRUTINY INVESTIGATION INTO:

NS/05-6/2 HARTLEPOOL'S LOCAL BUS SERVICE PROVISION

Recommendation:

NS/05-6/2a(ii) That work be undertaken by the Authority to improve the infrastructure of the bus network in Hartlepool, with particular reference to new and innovative means of providing up to date timetable information and ensuring that such information is co-ordinated in a timely manner (with a consideration of the provision of information for blind individuals).

A	NS/05-6/2a(ii)	Continue to review issues relating to timetable information. Improve clarity and presentation of at stop timetable information. Provide Real Time information at selected stops and through the internet, WAP and SMS.	December 2011	New style of timetable displays introduced at bus stops to improve clarity and presentation. Real Time Passenger Information delayed as a result of problems with the Tees Valley system.	Geoff Knowlson
----------	----------------	--	---------------	---	----------------

Scrutiny Recommendations (Not Completed) Monitoring Report

January 2009

Progress	Rec. No.	Recommendation	By When / Milestone	Update on progress	Lead Officer
----------	----------	----------------	---------------------	--------------------	--------------

SCRUTINY INVESTIGATION INTO:

NS/06-7/3 PUBLIC CONVENIENCE PROVISION IN HARTLEPOOL

Recommendation:

NS/06-7/3(1a)(vii) That in relation to each of the options and proposals put forward as part of the Cabinet Referral the Forum supports the proposals for the demolition and making good of the site at the Ward Jackson Park facilities. The toilets at the café to be made available to all public during the opening hours of the park.

N	NS/06-7/3(1a)(vii)	Demolition and making good of the site at the Ward Jackson Park facilities. The toilets at the café to be made available to all public during the opening hours of the park.	December 2007	With contractual/operational difficulties/ltd opening hours of the café, it was impractical to adopt proposals. It was more appropriate to refurbish existing facilities and provide disabled facilities. New facilities opened in the summer	Denise Ogden
----------	--------------------	--	---------------	---	--------------

Recommendation:

NS/06-7/3(1b) That in relation to each of the options and proposals put forward as part of the Cabinet Referral the Forum disagrees with the proposed course of action for the former Seaton Baths site and recommends that the facility be improved in terms of its general condition and more specifically its disabled access externally and disabled facilities.

R	NS/06-7/3(1b)	Improve facilities at the former Seaton Baths site in terms of its general condition and more specifically its disabled access externally and disabled facilities.	December 2008	A planning application for a new facility near the car park adjacent to Newburn Bridge has been submitted. Once built batchs site will be demolished.	Denise Ogden
----------	---------------	--	---------------	---	--------------

Scrutiny Recommendations (Not Completed) Monitoring Report

January 2009

Progress	Rec. No.	Recommendation	By When / Milestone	Update on progress	Lead Officer
----------	----------	----------------	---------------------	--------------------	--------------

SCRUTINY INVESTIGATION INTO: NS/07-8/5 SCHOOL MEALS					
--	--	--	--	--	--

Recommendation:

NS/07-8/5c	That the Catering Manager is involved in the planning and design of any new dining facilities in schools resulting from the Building Schools for the Future programme.				
------------	--	--	--	--	--

A	NS/07-8/5c	Head of Neighbourhood Management is a member of the extended project team. Consultation mechanisms are in place to ensure the Catering Manager is fully included in the planning and design of any new facility.		Planning process will begin formally summer 2009	Paul Briggs
---	------------	--	--	--	-------------

Scrutiny Recommendations (Not Completed) Monitoring Report

January 2009

Progress	Rec. No.	Recommendation	By When / Milestone	Update on progress	Lead Officer
----------	----------	----------------	---------------------	--------------------	--------------

SCRUTINY INVESTIGATION INTO:

NS/07-8/6	TRANSPORTATION LINKS TO HOSPITAL SERVICES & NEIGHBOURHOOD SERVICES DEPT.
-----------	--

Recommendation:

NS/07-8/6e	That the Council explores opportunities of developing a social enterprise scheme with the third sector to improve access to healthcare services.
------------	--

A	NS/07-8/6e	All opportunities will be explored via the newly Integrated Transport Unit (ITU).	December 2009	The Integrated Transport Unit has made approach to the DCSF in relation to a Yellow Bus proposal. Further information should be available late March 09	Alastair Smith
---	------------	---	---------------	---	----------------

NEIGHBOURHOOD SERVICES SCRUTINY FORUM

19 January 2009



Report of: Scrutiny Support Officer

Subject: SCRUTINY INVESTIGATION INTO COASTAL DEFENCES AND SHORELINE MANAGEMENT IN HARTLEPOOL – SCOPING REPORT

1. PURPOSE OF REPORT

- 1.1 To make proposals to Members of the Neighbourhood Services Scrutiny Forum for their forthcoming investigation into 'Coastal Defences and Shoreline Management in Hartlepool'.

2. BACKGROUND INFORMATION

- 2.1 At the meeting of this Forum on 18 June 2008 Members determined their Work Programme for the 2008/09 Municipal Year. During discussions Members agreed that their first work programme item would be into the 'Condition of the Highways in Hartlepool' and that the second work programme item would be into 'Coastal Defences and Shoreline Management in Hartlepool'.
- 2.2 The basic structure of the coast determines the use of the coast, the interest in the coast and the associated risks and therefore this all influences the management of the shoreline. The geology of the coastline provides the opportunity for education, awareness and scientific research as to how the environment has changed. This awareness underpins the understanding of how the coast works and how it may develop in the future.
- 2.3 The Coast Protection Act 1949, established the regulatory framework for England's coastline and the Coast Protection Authorities all around the coast. Hartlepool Borough Council is the designated Coast Protection Authority which "shall have such powers and perform such duties in connection with the protection of land" to ensure the adequate 'coast protection' of this Borough.

- 2.4 The grant aid for major capital schemes comes from the Department for Environment, Food and Rural Affairs (DEFRA) and delivery of this programme is administered by the Environment Agency. In order to qualify for grant aid, there is a hierarchy of complex plans that have to be put together and adopted by the local authority.
- 2.5 These start with a Shoreline Management Plan (SMP) that covers a long length of coast line. In Hartlepool Borough Council's case this covers the coastline from Tynemouth to the Humber. The current SMP II was adopted by the Council in April 2007 and will be reviewed five years from that date.
- 2.6 Shoreline Management is a broad term used for the subject areas of coastal processes and sea defences. Shoreline management is an essential element of coastal protection and development as seen by reference to the Shoreline Management Plan above. The Shoreline Management Plan is a 'living' document which is used by all operating authorities and other organisations, for example, the Environment Agency, Natural England, North York Moors National Park, Durham Heritage Coast and others. The document considers the planning and implementation of coast protection / sea defences and other maritime works.
- 2.7 Usually an SMP has a series of outputs and this will include the recommendation for a Strategy Study covering a much smaller length of coastline. The Headland Strategy Study was completed and adopted by the Council in February 2006. This had been an output of the first SMP. The current SMP has recommended a Strategy Study covering Seaton Carew and this is currently being carried out by consulting engineers, Scott Wilson at a cost of £720k. This study will take 15 months and commenced in August 2008.
- 2.5 As mentioned above, Hartlepool Borough Council is currently working with a firm of multi-disciplinary experts called Scott Wilson to produce the Seaton Carew Coastal Strategy Study. The study is being undertaken as a case of planning for the future to try to ensure that the most suitable coast protection / sea defences are in place to protect Hartlepool's coastline over a long period of time up to 100 years. As part of the study, a consultation exercise has been carried out and the results of this will be incorporated within the initial report which is called a Stage A report. This report will form the basis for the first round of public meetings.
- 2.6 It should be noted that Scott Wilson were awarded both commissions as a result of a complex selection procedure based upon a quality / price submission in competition with other national consultants.
- 2.7 A Strategy Study indicates the current condition of the structures and identifies which ones will meet the cost / benefit criteria to be developed to the next stage together with a series of recommendations for the remainder.

- 2.8 Following the outputs of the Headland Strategy Study, the only length of coastline that met this cost / benefit criteria on the Headland was the Town Wall. This is now subject to Scheme Appraisal by consulting engineers, Scott Wilson and if successful, it will be submitted to the Environment Agency for grant aid to construct a protection structure. This study will cost £470k and commenced in October 2008 and should take 24 months to complete.
- 2.9 It can be seen that there is a very lengthy and prescribed process for even being in a position to apply for grant aid, either for monies for one of the three types of study or for monies to actually construct a new structure.
- 2.10 In order to bid for funds at each of these three stages, officers must put together a formal application document and go to the Environment Agency's regional headquarters in Leeds. They must make a presentation to a Project Appraisal Board and then be subjected to vigorous questioning by the assembled regional experts. Following this, they are advised if their submission has been successful. It should be noted that Hartlepool Borough Council was the first local authority in the country to go through this process and be successful in the award of monies for the Town Wall Project.
- 2.11 In order to gain approval to all Strategy Studies and Project Appraisals for schemes over £2m in value, it is necessary to send the submissions to the Environment Agency's national headquarters' in London. Officers will then have to give a presentation in London to the National Review Group and then as above, be subjected to vigorous questioning by the assembled national experts.
- 2.12 A coast protection structure is a structure that protects the land from eroding due to the action of the sea. This happens where the natural land form is higher than high tide levels and if left unprotected would erode and wash away over a period of time. The statutory duty for coast protection rests with the Local Authority.
- 2.13 A sea defence can be defined as a barrier between the sea and the land, which acts as a defence from flooding of land where the natural land form is below the high tide levels and would flood from the sea if left undefended. For example, rock armour or a sea wall. Natural formations can also act as sea defences, for example, sand dunes and salt marshes, which have now become more widely recognised. The statutory duty for sea defence rests with the Environment Agency, not the local authority.
- 2.14 A coast defence structure provides protection against both flooding and erosion. Most of the structures that Hartlepool Borough Council are responsible for are of this type. Historically, where there is this dual role in Hartlepool, the local authority has led on project / maintenance issues to ensure that the requirements and priorities of Hartlepool are best met because we are in a position to pursue these issues and to a large extent control our own destiny.

3. OVERALL AIM OF THE SCRUTINY INVESTIGATION/ENQUIRY

- 3.1 To investigate the problems caused by coastal erosion to Hartlepool's coastline and assess the long term viability of the existing sea defences evaluating how shoreline management and strategy studies can help prevent future coastal erosion.

4. PROPOSED TERMS OF REFERENCE FOR THE SCRUTINY INVESTIGATION/ENQUIRY

- 4.1 The following Terms of Reference for the investigation are proposed:-

- (a) To identify areas of coastal erosion along Hartlepool's coastline;
- (b) To identify the problems and risks associated with coastal erosion along Hartlepool's coastline;
- (c) To examine the existing coastal defences to assess their effectiveness and long term viability;
- (d) To examine the financial implications to Hartlepool Borough Council of maintaining its coast protection / defence structures;
- (e) To examine local plans / strategies of relevance to evaluate the Council's approach to shoreline management and how these, along with risk management can prevent future coastal erosion;
- (f) To compare Hartlepool's approach to shoreline management with other local authorities / organisations by consulting to seek good practice; and
- (g) To consult with key stakeholders on the Council's approach to shoreline management.

5. POTENTIAL AREAS OF ENQUIRY / SOURCES OF EVIDENCE

- 5.1 Members of the Forum can request a range of evidential and comparative information throughout the Scrutiny review.
- 5.2 The Forum can invite a variety of people to attend to assist in the forming of a balanced and focused range of recommendations as follows:-
- (a) Member of Parliament for Hartlepool;
 - (b) Elected Mayor;
 - (c) Cabinet Member with Portfolio Holder for Neighbourhoods and Communities;

- (d) Neighbourhood Services Department Officers;
- (e) Environment Agency;
- (f) Natural England
- (g) North York Moors National Park;
- (h) The Department for Environment, Food and Rural Affairs (DEFRA);
- (i) Countryside Agency;
- (j) National Trust;
- (k) Marine Conservation Society;
- (l) Scott Wilson - Consultancy Firm;
- (m) Neighbouring Local Authorities;
- (n) Local residents;
- (o) Representatives of minority communities of interest or heritage; and
- (p) Ward Councillors.
- (q) P D Ports

5.3 The Forum may also wish to refer to a variety of documentary / internet sources, key suggestions are as highlighted below:-

- (a) The Department for Environment, Food and Rural Affairs – www.defra.gov.uk/
- (b) North East Shoreline Management Plan – www.northeastsmmp2.org.uk

6. COMMUNITY ENGAGEMENT

6.1 Community engagement plays a crucial role in the Scrutiny process and paragraph 5.2, details who the Forum could involve. However, thought will need to be given as to how the Forum wishes to encourage those views.

6.2 In addition, diversity issues have been considered in the background research for this enquiry under the Equality Standards for Local Government. As such the views of local diversity groups will be sought throughout the inquiry where felt appropriate and time allows. Consequently, consideration has been given as to how the views of people from minority communities of interest or

heritage (for example, people with disabilities, people with learning disabilities, people with mental health problems, black and minority ethnic people, and Lesbian, Gay, Bisexual and Transgender people), which may not be gathered through the usual community engagement routes, can be included over the course of the inquiry.

7. REQUEST FOR FUNDING FROM THE DEDICATED OVERVIEW AND SCRUTINY BUDGET

Option 1

- 7.1 Consideration has been given, through the background research for this scoping report, to the need to request funding from the dedicated Overview and Scrutiny budget to aid Members in their enquiry. At this stage no additional funding has been identified as being necessary to support Members in their investigation. Members, however, may wish to seek additional funding over the course of the investigation and the pro forma attached at **Appendix A** outlines the criteria on which a request to Scrutiny Co-ordinating Committee will be judged.
- 7.2 In addition, it is possible that over the course of this investigation some specialist research / advice may strengthen the Forum's findings and recommendations. The Scrutiny Support Officer will explore this in greater depth once the Forum has defined its terms of reference for the investigation and would bring a report to the Forum should a request for funding be deemed advantageous. Members' comments would be welcomed at this stage in relation to requests for additional funding from the dedicated Overview and Scrutiny Budget.

8. PROPOSED TIMETABLE OF THE SCRUTINY INVESTIGATION

- 8.1 Detailed below is the proposed timetable for the review to be undertaken, which may be changed at any stage:-

19 January 2009 – To formalise the process for the Forum's investigation, scoping report.

To receive a 'Setting the Scene' presentation from the Neighbourhood Services Department and to receive evidence from the Portfolio Holder for Neighbourhood and Communities (To be confirmed).

February 2009 (To Be Confirmed) - Site visit to coastal sites in Hartlepool – (Date and sites to be identified)

02 March 2009 – Formal meeting of the Forum to receive:-

- (i) Evidence from relevant organisations (e.g. Environment Agency);

- (ii) Evidence from Scott Wilson Consultancy Firm on outcomes of consultation on the Seaton Carew Coastal Strategy Study;
- (iii) Further evidence from the Neighbourhood Services Department;
- (iv) Feedback from the Chair of the Forum on the outcome of the site visits;

14 April 2009 – Consideration of Draft Final Report.

May / June 2009 – Consideration of Final Report by the Scrutiny Co-ordinating Committee.

TBC - Consideration of Final Report by the Cabinet.

9. RECOMMENDATION

- 9.1 Members are recommended to agree the Terms of Reference for the Scrutiny Forum's remit of the Scrutiny investigation as outlined in paragraph 4.1.

Contact Officer: - Laura Starrs – Scrutiny Support Officer
Chief Executives Department – Corporate Strategy
Hartlepool Borough Council
Tel: - 01429 523647
Email:-laura.starrs@hartlepool.gov.uk

BACKGROUND PAPERS

The following background paper(s) was/were used in the preparation of this report:-

- (i) North East Shoreline Management Plan – www.northeastsm2.org.uk

APPENDIX A

**PRO-FORMA TO REQUEST FUNDING TO SUPPORT
CURRENT SCRUTINY INVESTIGATION**

Title of the Overview and Scrutiny Committee:
Title of the current scrutiny investigation for which funding is requested:
To clearly identify the purpose for which additional support is required:
To outline indicative costs to be incurred as a result of the additional support:
To outline any associated timescale implications:
To outline the 'added value' that may be achieved by utilising the additional support as part of the undertaking of the Scrutiny Investigation:

To outline any requirements / processes to be adhered to in accordance with the Council's Financial Procedure Rules / Standing Orders:

To outline the possible disadvantages of not utilising the additional support during the undertaking of the Scrutiny Investigation:

To outline any possible alternative means of additional support outside of this proposal:

NEIGHBOURHOOD SERVICES SCRUTINY FORUM

19 January 2009



Report of: Scrutiny Support Officer

Subject: COASTAL DEFENCES AND SHORELINE
MANAGEMENT IN HARTLEPOOL – SETTING THE
SCENE PRESENTATION: COVERING REPORT

1. PURPOSE OF THE REPORT

- 1.1 To provide Members with an introduction to the 'Setting the Scene' Presentation, appended to this report, which will be delivered at today's meeting by the Director of Neighbourhood Services, as part of this Forum's investigation into 'Coastal Defences and Shoreline Management in Hartlepool'.

2. BACKGROUND INFORMATION

- 2.1 The Director of Neighbourhood Services will be in attendance at today's meeting to deliver a presentation, as part of this Forum's investigation into 'Coastal Defences and Shoreline Management in Hartlepool' in relation to the following issues:-
- (a) A brief overview of the roles and responsibilities of Hartlepool Borough Council in relation to coastal protection and shoreline management;
 - (b) A brief overview / description of local plans / strategies relating to shoreline management;
 - (c) Examples of coastal erosion and coastal defences along Hartlepool's coastline;
 - (d) Funding Issues associated with coastal defence; and
 - (e) Future issues and challenges.

3. RECOMMENDATION

- 3.1 That Members note the content of both the report and presentation, seeking clarification on any relevant issues from the Director of Neighbourhood Services, where felt appropriate.

Contact Officer:- Laura Starrs – Scrutiny Support Officer
Chief Executive's Department - Corporate Strategy
Hartlepool Borough Council
Tel: 01429 523 647
Email: laura.starrs@hartlepool.gov.uk

BACKGROUND PAPERS

There were no background papers referred to in the preparation of this report.

**Coastal Defence and Shoreline
Management in Hartlepool –
Setting the Scene**

Neighbourhood Services Scrutiny
Forum
19th January 2009

**Coastal Defence and Shoreline Management in
Hartlepool – Setting the Scene**

> Contents

- Roles and Responsibilities of Hartlepool Borough Council
- Shoreline Management Plan and Strategies
- Examples of Existing Conditions of Structures
- Funding Issues
- Future Issues and Challenges

**Coastal Defence and Shoreline Management in
Hartlepool – Setting the Scene**

- Roles and Responsibilities of Hartlepool Borough Council
 - Hartlepool Borough Council is a Coast Protection Authority as defined in the 1949 Coast Protection Act
 - Coast Protection
 - Sea Defence
 - Coast Defence

Coastal Defence and Shoreline Management in
Hartlepool – Setting the Scene

> Coast Protection

- Is the protection of land from erosion / wave action and usually occurs when the land is higher than the sea.
- HBC is responsible for the maintenance / repair of all coast protection structures that it owns.
- HBC also has permissive powers to deal with privately owned structures.

Coastal Defence and Shoreline Management in
Hartlepool – Setting the Scene

> Sea Defence

- Is the protection of land from flooding and usually occurs when the land is lower than the sea.
- This is the responsibility of the Environment Agency
- There are not many sea defence structures in Hartlepool and those few are either on or near the Tees estuary.

Coastal Defence and Shoreline Management in
Hartlepool – Setting the Scene

> Coast Defence

- Is a combination of coast protection and sea defence and a coast defence structure provides protection against flooding and erosion / wave action.
- In Hartlepool, where these exist, the major element tends to be erosion / wave action so HBC takes the lead on their maintenance and repair.

Coastal Defence and Shoreline Management in Hartlepool – Setting the Scene

> Some Key Facts

- Hartlepool has 9.6km of coast line which is made up of both HBC owned land and privately owned land.
- The current revenue budget for maintenance is £320k and this has to also clean and maintain becks and watercourses and fulfil the Council's obligations under the Land Drainage Act.
- This budget also pays for promenade and fencing repairs.
- One length of coast protection structure is in shared ownership with PD Ports and they make a contribution to the maintenance and repairs to this structure.

Coastal Defence and Shoreline Management in Hartlepool – Setting the Scene

> Some Key Facts Continued

- HBC has to carry out statutory inspections in line with the Environment Agency's High Level Targets
- Large elements of structures on the Headland have been identified as life expired.
- The cost of repairing a typical breach is in the order of £90k
- The North Pier is the most at risk structure and the highest priority for repairs, this needs another £400k - £500k worth of repairs just to stop it disintegrating and placing the Marina infrastructure at risk.

Coastal Defence and Shoreline Management in Hartlepool – Setting the Scene

> Shoreline Management Plan and Strategies

> Defra / Environment Agency Hierarchy

- Shoreline Management Plan
- Strategy Studies
- Scheme Appraisal (PAR)
- Scheme Construction

Coastal Defence and Shoreline Management in Hartlepool – Setting the Scene

> Shoreline Management Plan

- This covers a long length of coastline, in our case, from Tynemouth southwards to the Humber.
- An SMP investigates the overall coastal processes and assesses the impacts of these for up to a hundred years.
- It also focuses on other significant influences such as environmental processes, and on the Nature Conservation designated coastal areas, these are:
 - Special Protection Area and Ramsar Sites
 - Sites of Special Scientific Interest
 - Sites of Nature Conservation Interest
 - Regionally Important Geological Sites



Coastal Defence and Shoreline Management in Hartlepool – Setting the Scene

> Shoreline Management Plan Continued

- These designations severely limit the options that are available for replacement coast protection works.
- The SMP splits up the coastline into smaller lengths called management units.
- The SMP outputs a series of recommendations for each management unit.

Coastal Defence and Shoreline Management in
Hartlepool – Setting the Scene

> Strategy Studies

- For most management units, the SMP output is the recommendation that a Strategy Study be carried out.
- This study investigates a much smaller length of coastline, typically one or two management units in length.
- It looks in detail at the coast line, it can include intrusive testing of existing structures.
- It builds up a complete condition survey and translates this into a life expectancy of all existing structures.

Coastal Defence and Shoreline Management in
Hartlepool – Setting the Scene

> Strategy Studies

- It formulates potential solutions in line with the Environment Agency's criteria for grant aid.
- It provides costs over the hundred year period for renewing / repairing existing structures.
- It prioritises the highest risk structures.
- Where a potential scheme meets the Environment Agency's funding criteria, it can recommend seeking funding for a specific scheme appraisal.

Coastal Defence and Shoreline Management in
Hartlepool – Setting the Scene

> Scheme Appraisal

- This takes the output of a Strategy Study and progresses the outline solution into a full cost effective engineering design that can be constructed.
- Sometimes this type of appraisal will need a hydraulic model.
- This needs a great deal of consultation / agreement with statutory bodies.
- The design information is formatted in line with the Environment Agency's requirement so that it can be submitted for grant aid.

Coastal Defence and Shoreline Management in
Hartlepool – Setting the Scene

> Scheme Construction

- The output of a scheme appraisal would be a submission to the Environment Agency for grant aid.
- If grant aid is approved in principle – Then await funding stream provision and wait until finance is made available.
- Design and construction details go out to tender.
- Tenders received and appraised and then the preferred tenderer's details forwarded to the Environment Agency.
- Grant aid confirmed and contractor appointed

Coastal Defence and Shoreline Management in
Hartlepool – Setting the Scene

> Current position in Hartlepool

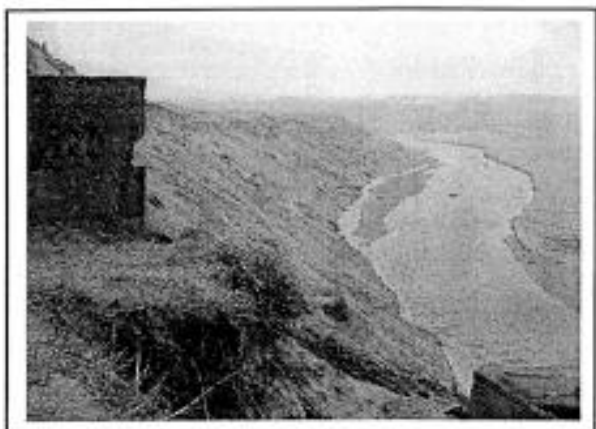
- SMP approved 1999
- Headland Strategy Study approved February 2006
- SMP II approved April 2007
- Seaton Carrow Strategy Study commenced August 2008
- Town Wall Scheme Appraisal Study commenced October 2008

Coastal Defence and Shoreline Management in
Hartlepool – Setting the Scene

> Examples of existing condition of structures

- Most of the Headland structures have been identified as being life expired and in need of replacement.
- Apart from the Town Wall area, the remaining Headland structures do not meet the Environment Agency's criteria for grant aided funding.
- The North Pier is in danger of suffering a serious collapse.
- See following photographs for whole coastline, north to south.

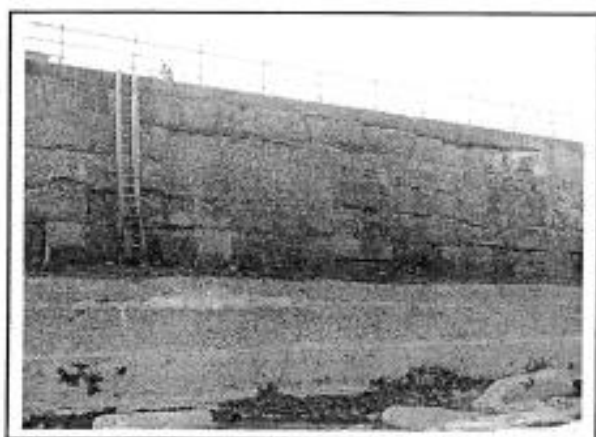


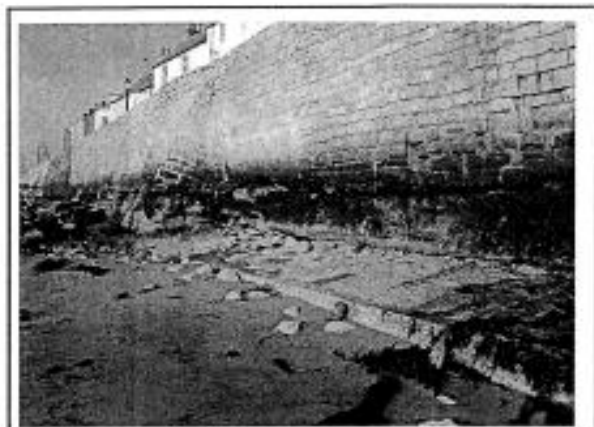


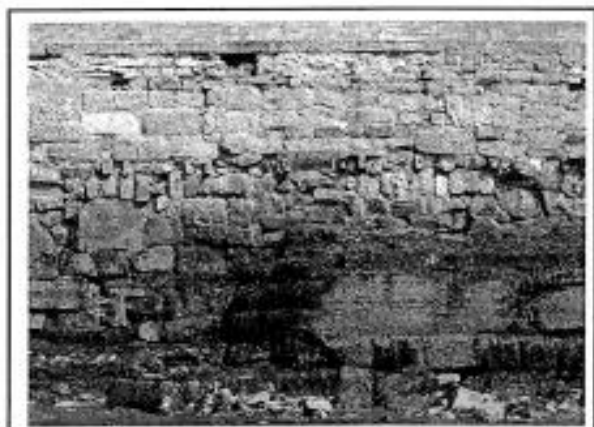












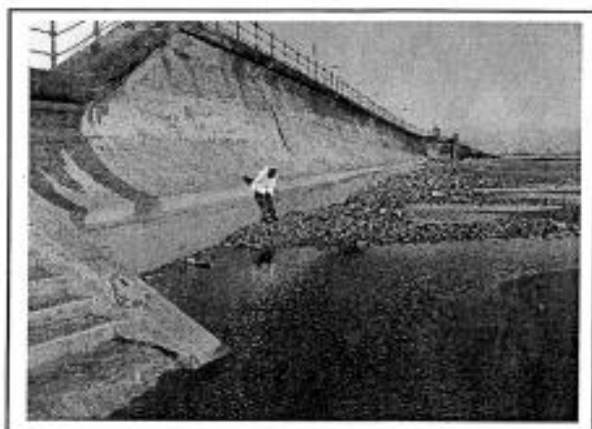
























**Coastal Defence and Shoreline Management in
Hartlepool – Setting the Scene**

> Funding Issues

- Revenue Budget = £320k per annum and covers other work areas
- Grant aid from the Environment Agency on a project by project basis
- Current Grant aid: Seaton Carew Strategy Study = £720k
Town Wall Scheme Appraisal = £470k
- The process for being awarded grant aid is complex and has a very long timescale attached to it.

Coastal Defence and Shoreline Management in
Hartlepool – Setting the Scene

> Funding Issues

- The starting point for grant aid is the SMP – output = Strategy Study
- Submission for Strategy Study including procuring a specialist consultant culminates in a officer presentation at the Environment Agency regional headquarters at Leeds.
- Approval from Environment Agency – Timescale from starting submission is 6 months.
- Undertake the Strategy Study – Timescale is typically 15 months

Coastal Defence and Shoreline Management in
Hartlepool – Setting the Scene

> Funding Issues

- The Strategy Study needs to be approved by the Environment Agency and this is done by an officer presentation at their London Headquarters.
- Approval from the Environment Agency – timescale from submission is 3 months.
- Submission for a Scheme appraisal report including procuring a specialist consultant culminates in a further officer presentation at the Environment Agency regional headquarters at Leeds.

Coastal Defence and Shoreline Management in
Hartlepool – Setting the Scene

> Funding Issues

- Approval from Environment Agency – Timescale from starting submission is 6 months.
- Undertake the Scheme appraisal – Timescale typically 24 months.
- Submission to the Environment Agency :
 - If proposed costs of scheme are less than £2m – officer presentation at Leeds.
 - If proposed costs are greater than £2m – officer presentation at London

Coastal Defence and Shoreline Management in
Hartlepool – Setting the Scene

> Funding Issues

- Approval in principal from the Environment Agency.
- Send scheme details out to tender and forward details of the preferred contractor to the Environment Agency.
- Formal approval to the tender price from the Environment Agency – Timescale from submission is not less than 6 months.
- Construction starts typically up to 5 years after the project was identified and this is based upon a positive response at each stage of the process.

Coastal Defence and Shoreline Management in
Hartlepool – Setting the Scene

> Funding Issues

> Existing condition - Costs and Risk Assessments

- North Pier
- Do Nothing – Risk of collapse, damage to Marina
- £900k Repair – Stabilise fabric of the structure
- £2,500k Repair – Stabilise plus prevent wave overtopping
- £17,000k repair – Complete repair and open to the public

Coastal Defence and Shoreline Management in
Hartlepool – Setting the Scene

> Funding Issues

> Existing condition - Costs and Risk Assessments

- Cemetery Area
- Do nothing – Erosion of coastline up to and including cemetery, this will take between 50 and 100 years.
- £120k – Appoint a specialist consultant to consider innovative solutions

Coastal Defence and Shoreline Management in
Hartlepool – Setting the Scene

- > Funding Issues
- > Existing condition - Costs and Risk Assessments
 - Town Moor Area
 - Do nothing – Continuous erosion, eventual loss of Town Moor
 - £2,500k – Short term repairs, stabilise for 5 to 10 years
 - £21,000k – Reconstruction of structures, protection for 100 years

Coastal Defence and Shoreline Management in
Hartlepool – Setting the Scene

- Funding Issues
- Existing condition – Costs and Risk assessments
- Promenade / Ramps / Steps
 - Do nothing – quick closure of assets, unsightly fencing, loss of access to beaches
 - £1,100k – piecemeal repairs, lifespan of assets increased to circa 8 – 10 years
 - £2,800k – reconstruction and repair, lifespan of assets increased by circa 25 years

Coastal Defence and Shoreline Management in
Hartlepool – Setting the Scene

- > Future Issues and Challenge s
 - Increasingly difficult to obtain grant aid for capital projects.
 - Maintaining coast protection assets and public access to them without grant aid.
 - Proposed Floods and Water Bill – out to consultation.
 - Proposed Marine Bill – out to consultation.

NEIGHBOURHOOD SERVICES SCRUTINY FORUM REPORT

19 January 2009



Report of: Scrutiny Support Officer

Subject: COASTAL DEFENCES AND SHORELINE
MANAGEMENT IN HARTLEPOOL – EVIDENCE
FROM THE AUTHORITY'S PORTFOLIO HOLDER
FOR NEIGHBOURHOODS AND COMMUNITIES –
COVERING REPORT

1. PURPOSE OF REPORT

- 1.1 To inform Members of the Forum that the Portfolio Holder for Neighbourhoods and Communities has been invited to attend this meeting (subject to availability), to provide evidence in relation to the ongoing investigation into 'Coastal Defences and Shoreline Management in Hartlepool'.

2. BACKGROUND INFORMATION

- 2.1 The Authority's Portfolio Holder for Neighbourhoods and Communities has been invited to this meeting (subject to availability), to provide evidence to the Forum in relation to his responsibilities, and views on, coastal defences and shoreline management.
- 2.3 During this evidence gathering session with the Authority's Neighbourhoods and Communities Portfolio Holder, it is suggested that responses should be sought to the following key questions:-
- (a) What are your roles and responsibilities in relation to the protection of Hartlepool's coastline?
 - (b) What are your views on the current approach to coastal protection and shoreline management in Hartlepool?
 - (c) What areas of improvement if any, would you suggest to help prevent the future erosion of Hartlepool's coastline?

3. RECOMMENDATION

- 3.1 That Members of the Forum consider the views of the Portfolio Holder for Neighbourhoods and Communities in relation to the questions outlined in section 2.3.

CONTACT OFFICER

Laura Starrs – Scrutiny Support Officer
Chief Executive's Department - Corporate Strategy
Hartlepool Borough Council
Tel: 01429 523 647
Email: laura.starrs@hartlepool.gov.uk

BACKGROUND PAPERS

No background papers were used in preparation of this report.