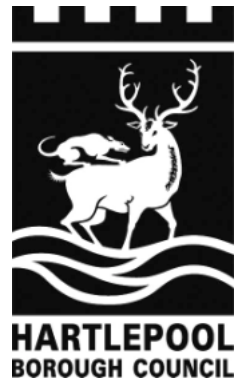


# **SAFER HARTLEPOOL PARTNERSHIP AGENDA**



**5 July 2013**

**at 2.00 pm**

**in Committee Room B, Civic Centre, Hartlepool**

## **MEMBERS: SAFER HARTLEPOOL PARTNERSHIP**

Councillors Christopher Akers-Belcher and Angie Wilcox, Elected Members, Hartlepool Borough Council

Dave Stubbs, Chief Executive, Hartlepool Borough Council

Denise Ogden, Director of Regeneration and Neighbourhoods, Hartlepool Borough Council

Clare Clark, Neighbourhood Manager, Community Safety, Hartlepool Borough Council

Louise Wallace, Director of Public Health, Hartlepool Borough Council

Steve Jermy, Acting Hartlepool District Commander, Cleveland Police

Barry Coppinger, Office of Police and Crime Commissioner for Cleveland

Paul Haytack, Chief Inspector, Chair of Youth Offending Board

Luicia Sager-Burns, Director of Offender Management, Tees Valley Probation Trust

Councillor Carl Richardson, Cleveland Fire and Rescue Authority Nominated Member

Ian McHugh, Hartlepool District Manager, Cleveland Fire and Rescue Authority

John Bentley, Voluntary and Community Sector Representative, Chief Executive, Safe in Tees Valley

Andy Powell, Director of Housing Services, Housing Hartlepool

Hartlepool Magistrates Court, Chair of Bench (vacant)

## **ALSO INVITED:**

Karen Hawkins, Representative of Hartlepool and Stockton on Tees Clinical Commissioning Group

Mark Smith, Head of Youth Services, Hartlepool Borough Council

## **1. APPOINTMENT OF VICE CHAIR**

## **2. APOLOGIES FOR ABSENCE**

**3. TO RECEIVE ANY DECLARATIONS OF INTEREST BY MEMBERS**

**4. MINUTES**

- 4.1 Minutes of the meeting held on 24 April 2013
- 4.2 Minutes of the meeting held on 21 June 2013

**5. ITEMS FOR DECISION**

- 5.1 Community Safety Strategy 2014-17 – *Director of Regeneration and Neighbourhoods*
- 5.2 Safer Hartlepool Partnership Development Day Feedback – *Director of Regeneration and Neighbourhoods*

**6. ITEMS FOR DISCUSSION / INFORMATION**

- 6.1 Safer Hartlepool Partnership Performance – *Neighbourhood Manager (Community Safety)*

**7. ANY OTHER BUSINESS WHICH THE CHAIR CONSIDERS URGENT**

**Date of Next meeting – 16 August 2013 at 9.30am in Committee Room B, Civic Centre, Hartlepool**

## SAFER HARTLEPOOL PARTNERSHIP EXECUTIVE

### Minutes of meeting held on 24<sup>th</sup> April 2013



#### **Present**

Stuart Drummond (Chair)	Mayor, HBC
Sheila Atkinson (Minutes)	Support Officer, HBC
Sarah Wilson	Officer for Police and Crime Commissioner for Cleveland.
John Bentley	Safe in Tees Valley
Richard Starrs	Strategy and Performance Officer, HBC
Andy Powell	Director of Housing Services, Housing Hartlepool
Denise Ogden	Director of Regeneration and Neighbourhoods, HBC
Dave Stubbs	Chief Executive, HBC
Lucia Saiger-Burns	DTV Probation Trust
Christopher Akers – Belcher	Ward Councillor, HBC
Louise Wallace	Director of Public Health, HBC
Supt Steve Jermy	Police
Ian McHugh	Fire Authority
Clare Clark	Neighbourhood Manager (Community Safety) HBC
Paul Pagni	Clinical Commissioning Group
Joan Stevens	Scrutiny Manager, HBC

#### **1. Apologies**

Barry Coppinger	Police & Crime Commissioner
Sally Robinson	Director of Childrens Service

#### **OPEN SESSION**

#### **Action**

#### **2 Minutes of meeting held on 13<sup>th</sup> March 2013 & Matters arising**

Minutes were accepted as a true record.

- Template of Forward Plan had been populated and was circulated.
- Minimum pricing for alcohol -response to be circulated.

#### **3 Items for Decision**

- 3.1 **Terms of Reference** – had been reviewed to reflect recent changes such as the introduction of Clinical Commissioning Groups, and Office of Police and Crime Commissioner. Members of the group were invited to consider the revised TOR and contact DO should they feel there had been any omissions. It was agreed that Magistrates should be contacted again with a view to attendance at future meetings. It was also agreed that named deputies should be included and an email sent to SHP Executive Members to obtain details. In view of the new Constitution it was confirmed that the Partnership is and has always been a public meeting but would where necessary in the interests of confidentiality would operate 'closed' sessions.

**DO**  
**DO**

#### **3.2 Team Around the Household (TAH)– Subject to Closed Session**

- 3.3 **Offending/Reoffending Action Plan** – LSB presented progress made on the Reducing Re-offending Action Plan 2012- 2013 explaining that as agreed previously by the Executive, the Reducing Reoffending Group would cease to meet in its current form with smaller

**OPEN SESSION****Action**

groups meeting to discuss specific actions. Main points of discussion in relation to progress on the action plan were :

- Accommodation – it was accepted that there were gaps in provision and barriers existed which needed to be challenged by practitioners. AP reported that he understood there had been a recent commission through the Drugs Intervention Programme to recruit a worker who would provide support for individuals with substance misuse issues around housing. It was agreed that further work needed to be done to provide clarity in this area.
- Alcohol continues to be a big issue, however targets had been exceeded for ATRs and ASRs. This work is managed in Probation's general team, however it is felt that better outcomes could be achieved by including this in the CJIT teams. This is therefore being considered in the Integrated Offender Management Team. Links to TA H have been established and restorative justice training has yet to be tested.
- Shoplifting - Police have their own comprehensive action plan which includes efforts to obtain consistency of sentencing for repeat offenders. The FCC is arranging a forum on 1<sup>st</sup> July in respect of shoplifting as part of a Business Forum, acknowledging the significant impact this offence has on the business community.
- Short sentences (under 12 months) – CJIT are working with this group however this needs to be extended to provide a more consistent approach across agencies.
- Police Tasking & Co-ordination process is now offender based rather than area based - this will be reviewed after three months.
- Prison releases – more work is to be done on the process following release, however Police are receiving information on this.
- A meeting is to take place tomorrow to identify targeted actions for the future.
- LW advised the group that existing contracts for alcohol treatment will continue despite funding no longer being part of the Pooled Treatment Budget and its transferral to the Local Authority Public Health budget to provide this discretionary function.

There was a lengthy discussion on reoffending rates and how these are calculated. SJ felt that in reality core reoffenders were being challenged daily, and CC added that Hartlepool's high detection rates also influence the final figures. It was suggested that positive publicity needs to be undertaken in relation to the actual figures behind the reoffending rates but it was also accepted that the re-offending rate for the town could have a negative impact on attracting inward investment. SD suggested that involvement of the Magistrates was desirable to promote a better understanding of the implications of reoffending on the community particularly in regard to shoplifting. AP suggested that other community sanctions should be considered in order to influence the perceived 'acceptability' of shoplifting.

LSB felt that further debate needed to take place on the most important issues for the Partnership and also cited domestic violence as worthy of further discussion. It was noted that the July meeting of this group will discuss domestic violence in more detail.

- 3.3 **Development Day** - DO explained the briefing that had been circulated. The format of the day would include a SWOT analysis following which an action plan would be produced incorporating actions to strengthen the Partnerships ability to deliver on their agreed strategic priorities contained within the Community Safety Plan. SD suggested that Reoffending, Team Around the Household, and Domestic Violence should feature in the analysis following earlier discussions. DO also added that forthcoming changes to the Probation Service and the work of the PCC would also be considered.

Due to the unavailability of some members it was agreed that the development day would be held on the 24<sup>th</sup> May – the next scheduled meeting of the SHP Executive Group

**DO**

**OPEN SESSION****Action**

with the possibility of meeting earlier. DO will confirm new arrangements.

- 3.5 **Restorative Justice Training** – CC informed that Restorative Justice within the context of Criminal Justice is intended to give victims a greater voice in the Criminal Justice System and increase satisfaction with the way victims are treated by Criminal Justice Agencies. At the same time by bringing the offender face to face with the impact of their offending behaviour evidence suggests that reoffending is reduced longer term.

Restorative Practice Training is currently being delivered locally in respect of TAH and Troubled Families, and there are also examples of Restorative Justice ie face to face conferencing between the victim and offender, being delivered through the Probation and Youth Offending Services in relation to high level offending.

A training offer from Restorative Solutions, a community interest company, would extend this approach to adults involved in anti-social behaviour. The training would be delivered on a number of levels - from a community event involving upto 120 individuals to raise awareness and understanding of restorative justice, to the training of mediators to undertake restorative conferencing. The project would be managed by the Community Safety Team who would co-ordinate referrals and submit quarterly returns to Restorative Solutions.

It was noted that Middlesbrough and Stockton have already accepted this offer and discussions have been held locally with Police, ASBU, YOS and Housing Hartlepool which have provided a favourable response to this approach on a pilot basis. CC also added that the ability to deliver restorative conferencing would link into the ASB Bill and proposed Community Remedy which is likely to feature in the Queens Speech in May.

Members of the group agreed the proposal. JB added that once training is completed there are significant challenges in co-ordinating quality restorative justice and thoughts on how this is resourced in the future need to be considered.

- 3.6 **Early Intervention Grant** – the report had been circulated. CC explained that this funding related to the Community Safety Home Office element of the EIG which had historically come to the Partnership via the Youth Crime Action Plan but merged with the EIG from 2011/12.

The outcomes from last year's work had been evaluated and discussed by the SHP Executive Group in February alongside the strategic assessment.

Proposals for this year's spend included Assertive Outreach, Community Alcohol Partnership, Restorative Practice, Reparation & Triage, Healthy Relationships in Schools, Teen to Parent Abuse, and Mediation.

CC confirmed the total proposed spend as £137,800 with £32,114 remaining.

Following a request from CAB, CC agreed to provide details relating to the numbers of children involved in the 'Healthy Relationships' programme delivered by Harbour.

**CC**

The group agreed the recommendations made in the report and it was suggested that the residual funding remained unallocated until after the Development Day.

SD highlighted medical evidence on early intervention with 0-2 year olds and suggested that this should be considered for the future.

**OPEN SESSION****Action****Items for Discussion**

- 4.1 **PCC Update** – Copies of the Police & Crime Plan were circulated by SW who explained that the PCC is currently carrying out visits to businesses in the area which will be followed by a series of business summits, the first of which will be focus on retail crime. An initial meeting on hate crime will take place this week, and nominations for Cleveland Community Safety Awards are being requested to recognise the good work going on in communities delivered by partners.

Visits to communities in the area have provided positive responses and feedback from Hartlepool has indicated that they are happy with local arrangements. Following difficulties in getting young people to engage with a Cleveland wide Youth Forum these are to be reshaped with a local focus and community projects.

- 4.2 **CSP Funds 13/14** – DO confirmed that the £78,000 held by the PCC will be passed back to Hartlepool this year and funding profile discussed at last meeting had been agreed. This would mean that there would be some funding for communication, raising awareness and improving perception. Funding will also be available to Joint Action Groups to improve neighbourhood safety; and an independent domestic violence advisor. It was noted however that this funding may not be available next year, and there was therefore a need to ensure evidence is available from current projects.

- 4.3 **Crime & Disorder Statutory Scrutiny** – Joan Stevens explained that since 2006 there has been a statutory requirement for local authorities to have a Crime & Disorder Committee to undertake functions to scrutinise the Partnership. This function has now been delegated to the Audit & Governance Committee which will carry out statutory scrutiny including health and crime and disorder. The Committee will be looking to have some input in policy, and strategy development. Performance and monitoring reports will be submitted by the Partnership. Actions scrutinised by the Committee will not be those of partners but of the Partnership as a whole. There is an additional function in 'Councillor Call for Action' which could occur should a member of the public raise an issue in relation to crime and disorder with a Ward Councillor. Clear criteria would be applied should this happen. It was noted that this has not previously happened in relation to crime and disorder.

JS emphasised that this process is primarily about partnership working and in identifying a work programme or future issues considering whether statutory scrutiny could assist in any way.

5. **Items for Information**

- 5.1 **Clinical Commissioning Group** – It was noted that Paul Pagni would attend future meetings as a representative of the Clinical Commissioning Group.
- 5.2 **Police & Crime Panel Scrutiny Programme** – Section 5 of this report relates to the possibility of two or more of the CSPs merging and DO did not feel that this fell within the role of the Police & Crime Panel. SW agreed with this point in that the remit of the Police & Crime Panel is only to scrutinise the PCC on the delivery of the Police & Crime Plan. DO is to speak with the lead officers at Stockton.

**DO**

6. **Any Other Business**

Dave Stubbs thanked Stuart Drummond for his contribution to the Partnership over the years. In response SD replied that he believed over the last 11 years SHP had been

**OPEN SESSION**

**Action**

successful in re-inventing itself and adapting to local and national conditions. He thanked partners for their commitment to the Partnership and wished everyone well for the future.

**Date of Next Meeting – now Development Day**

24<sup>th</sup> May at Civic Centre, Committee Room, Committee Room – Amended time to be confirmed.

**DO**

# **SAFER HARTLEPOOL PARTNERSHIP DECISION RECORD**

21 June 2013

The meeting commenced at 2.00 pm in the Civic Centre, Hartlepool

**Present:**

Councillor: Christopher Akers-Belcher (In the Chair)

Denise Ogden, Director of Regeneration and Neighbourhoods  
Clare Clark, Neighbourhood Manager, Community Safety  
Louise Wallace, Director of Public Health  
Lucia Saiger-Burns, Tees Valley Probation Trust  
John Bentley, Safe in Tees Valley

Detective Chief Inspector John Chapman was in attendance as a substitute for Steve Jermy, Acting Superintendent, Cleveland Police and Ian Wolstenholme was in attendance as a substitute for Barry Coppinger, Police and Crime Commissioner

Also present: Mike Batty, Independent Chair of the Review Panel, Stockton on Tees Borough Council  
Karen Hawkins, Hartlepool and Stockton on Tees Clinical Commissioning Group

Officers: Angela Armstrong, Principal Democratic Services Officer

## **1. Apologies for Absence**

Apologies for absence were received from Dave Stubbs, Chief Executive; Sally Robinson, Assistant Director, Children's Services; Barry Coppinger, Police and Crime Commissioner; and Ian McHugh, Cleveland Fire and Rescue Authority.

## **2. Declarations of Interest**

None.



### 3. **Local Government (Access to Information) (Variation Order) 2006**

Under Section 100(A)(4) of the Local Government Act 1972, the press and public were excluded from the meeting for the following items of business on the grounds that they involved the likely disclosure of exempt information as defined in the paragraphs referred to below of Part 1 of Schedule 12A of the Local Government Act 1972 as amended by the Local Government (Access to Information) (Variation) Order 2006.

**Minute 4 – Domestic Homicide Review – Overview Report** – This item contains exempt information under Schedule 12A Local Government Act 1972 as amended by the Local Government (Access to Information) (Variation) Order 2006 namely information relating to any individual (para1).

### 4. **Domestic Homicide Review – Overview Report**

*(Independent Chair of the Review Panel)* This item contains exempt information under Schedule 12A Local Government Act 1972 as amended by the Local Government (Access to Information) (Variation) Order 2006 namely information relating to any individual (para1)

#### **Purpose of report**

To examine agency responses and support given to a former resident of Hartlepool, prior to the point of the victim's death in 2012. The review considered agencies' contact and involvement with the victim and perpetrator.

#### **Issue(s) for consideration**

The Independent Chair of the Review Panel presented the detailed and comprehensive report that had been compiled by the Panel as a consequence of a Review undertaken from August 2012 to January 2013.

In conclusion, the Review Panel did not find any serious deficiencies in any of the agency responses and to the contrary, found that the process of referral from the court service to the Independent Domestic Violence Advisor at Harbour had worked very well and stood up to scrutiny entirely.

It was noted that the author of the independent review had been very thorough and highlighted only minor defects in paperwork which had no bearing on the outcome of the case. In relation to this issue, the recommendations contained within the action plan included fairly minor points of police procedure. In addition to this, a key action included within the Review was awareness training for General Practitioners (GPs) and included proposals for additional training to be undertaken.

The Panel had recognised the extremely sad nature of this case and forwarded their condolences to the family and friends of the victim.

The Partnership were informed that once the Review was approved it would be submitted to the Home Office for a quality assurance process to be undertaken and subsequent publication of the report.

The Independent Chair of the Review Panel wished to express his thanks for all the hard work and commitment shown by everyone involved in the review process to ensure that a comprehensive review was undertaken.

It was noted that NHS England, as commissioners of GP services, would be responsible for undertaking the action to provide additional training for GPs. It was confirmed that in relation to the actions to be undertaken, the Chief Executive's of all appropriate organisations/agencies would be contacted and the action plan would be reviewed by the Safer Hartlepool Partnership six months from the acceptance of the Review by the Home Office.

The Independent Chair of the Review Panel was thanked for chairing the Panel and for presenting the report as part of the Stockton-Hartlepool reciprocal arrangements.

### **Decision**

- (i) The Overview report of the Domestic Homicide Review was accepted.
- (ii) The report be submitted to the Home Office for quality assurance process to be undertaken and subsequent publication.
- (iii) That the action plan be monitored and submitted to a meeting of the Safer Hartlepool Partnership six months after the acceptance of the Review by the Home Office.

## **5. Any Other Items which the Chairman Considers are Urgent**

None.

The meeting concluded at 2.30 pm

CHAIR



## SAFER HARTLEPOOL PARTNERSHIP

5<sup>th</sup> JULY 2013



**Report of:** Director of Regeneration and Neighbourhoods

**Subject:** COMMUNITY SAFETY STRATEGY 2014-17

---

### 1. PURPOSE OF REPORT

- 1.1 To agree a process for developing the Community Safety Strategy 2014-17.

### 2. BACKGROUND

- 2.1 In accordance with the Crime and Disorder Act 1998 and the Crime and Disorder Regulations 2007 the Safer Hartlepool Partnership is required to produce a three year Community Safety Strategy to set out how it intends to tackle crime and disorder, substance misuse, and re-offending in Hartlepool.
- 2.2 The current Hartlepool Community Safety Strategy which was developed during 2010/11 will come to an end in March 2014.
- 2.3 This report sets out a proposed process and timeline for developing a Community Safety Strategy to cover the period of 2014 -17.

### 3. DEVELOPMENT OF DRAFT COMMUNITY SAFETY STRATEGY

- 3.1 Work will begin on developing the Community Safety Strategy in September 2013. In line with the Partnerships statutory responsibilities this will include an analysis of local crime and disorder, substance misuse, offending and re-offending data drawn from a range of data sources.
- 3.2 Public consultation in developing the draft strategy will be assisted this year by the production of a Household Survey which is currently being undertaken by the Local Authority and due to report in September 2013. This survey aims to gather information on public perceptions about their local area and includes a section on community safety.
- 3.3 The annual 'Face the Pubic Event' to be held in September 2013 will provide the opportunity for the Safer Hartlepool Partnership to feedback to the public on performance during 2012/13, and activities undertaken to address local

priorities identified at the 'Face the Public Event' in 2012. The opportunity for the public to provide an input into the development of key priorities for the future will also be provided at this event.

- 3.4 The Strategic Assessment (including data analysis and public priorities) will be presented to the Safer Hartlepool Partnership in December, with a draft strategy being ready to go out for consultation on 23 December 2013.
- 3.5 The draft Community Safety Strategy will be subject to a nine week consultation period with the consultation exercise comprising the following:
  - An online consultation survey – with links published on the Safer Hartlepool Partnership website, Hartlepool Borough Council Website, Hartlepool Borough Council Facebook Page and Hartlepool Borough Council Twitter Page.
  - The use of local media mechanisms including but not limited to Hartlepool Mail and Hartlepool FM.
  - Targeted emails will be sent to a wide range of public, private, community and voluntary sector representatives and groups containing a link to the online consultation survey.
  - Officers will link into community and resident groups.
  - The draft strategy will be presented to the Health & Wellbeing Board, the Councils Audit & Governance Committee, Neighbourhood Services Committee.
- 3.6 It is anticipated that the finalised strategy will be presented to the Partnership in March 2014 ready for publication at the beginning of April 2014.

#### **4. LEGAL CONSIDERATIONS**

- 4.1 In accordance with the Crime and Disorder Act 1998 and the Crime and Disorder Regulations 2007 the Safer Hartlepool Partnership is required to produce a three year Community Safety Strategy to set out how it intends to tackle crime and disorder, substance misuse, and re-offending in Hartlepool.

#### **5. EQUALITY AND DIVERSITY**

- 5.1 The strategic assessment and consultation process with an annual refresh will ensure that the needs of all sections of the community are considered when formulating and implementing the Community Safety Strategy 2014-17.

## **6. SECTION 17 OF THE CRIME AND DISORDER ACT 1998 CONSIDERATIONS**

- 6.1 Failure to develop a Community Safety Strategy would undermine the Safer Hartlepool Partnerships ability to fulfil its statutory responsibilities around reducing crime and disorder, substance misuse, and re-offending.

## **7. RECOMMENDATIONS**

- 7.1 That the Safer Hartlepool Partnership consider, discuss and agree any amendments to the proposed process and schedule for developing and consulting on the Community Safety Strategy 2014-17.

## **8. REASONS FOR RECOMMENDATIONS**

- 8.1 The Safer Hartlepool Partnership has a statutory duty to develop a three year strategy aimed at reducing crime and disorder, substance misuse, and re-offending behaviour.
- 8.2 The above proposals outline how the draft Community Safety Strategy 2014-17 will be developed and how consultation will take place within the requisite timescale.

## **9. BACKGROUND PAPERS**

- 9.1 There are no background papers.

## **10. CONTACT OFFICER**

Denise Ogden  
Director of Regeneration and Neighbourhoods  
Hartlepool Borough Council  
Regeneration and Neighbourhoods  
Civic Centre  
Level 3  
Email: [Denise.Ogden@Hartlepool.gov.uk](mailto:Denise.Ogden@Hartlepool.gov.uk)  
Tel: 01429 523300

Clare Clark  
Neighbourhood Manager (South and Central)  
Hartlepool Borough Council  
Regeneration and Neighbourhoods  
173 York Road  
Email: [Clare.Clark@hartlepool.gov.uk](mailto:Clare.Clark@hartlepool.gov.uk)  
Tel: 01429 855560



## SAFER HARTLEPOOL PARTNERSHIP

5<sup>th</sup> JULY 2013



**Report of:** Director of Regeneration and Neighbourhoods

**Subject:** SAFER HARTLEPOOL PARTNERSHIP  
DEVELOPMENT DAY FEEDBACK

---

### 1. PURPOSE OF REPORT

- 1.1 To provide members of the Safer Hartlepool Partnership with feedback from the SHP Development Day Event held on 24 May 2013, and to identify from the discussions held on that day a small number of key priorities to be further developed by the Partnership.

### 2. BACKGROUND

- 2.1 Following discussion at their March meeting around the huge challenges facing the Safer Hartlepool Partnership, and the ever changing environment in which the Partnership works, a Safer Hartlepool Partnership Development Day was held on Friday 24 May.
- 2.2 The aim of the Development Day was to provide a developmental and reflective challenge for the Partnership through considering the strengths and weaknesses of the Partnership and the identification of opportunities and threats through a SWOT workshop exercise. (Discussion notes in relation to the SWOT exercise are attached at **Appendix A**).

### 3. PROPOSED SHP KEY AREAS FOR FURTHER DEVELOPMENT

- 3.1 Whilst there were many key strengths identified by those in attendance at the development session, there were also a number of weaknesses identified along with potential threats to partnership performance that it was felt needed to be addressed as we move forward.
- 3.2 It was also felt that it was important to concentrate on 'doing a few things well'.

As such a number of key areas for improvement have been identified for further discussion/development by the Partnership. These have been grouped under the following headings:

- Reducing re-offending
- Public confidence and reassurance
- Partnership Support and Collaboration

3.3 Table A below identifies the three priority areas and proposes a number of key actions to take forward from the discussions held on the development day.

**Table A - SHP DEVELOPMENT PLAN**

<b>Priority</b>	<b>Action</b>	<b>Responsibility</b>	<b>Timescale</b>	<b>RAG</b>
<b>1.</b> Reducing Re-offending – outsourcing of offender management	1. Collective bid for services - SHP to discuss how it can support a collective bid.  2. SHP to discuss and agree preferred process in relation to how they will liaise with new offender/management provider.			
<b>2.</b> Public confidence and cohesion – widening polarization; impact of welfare reform; EDL/BNP activity, community tensions and threat to cohesion; failing to get the message across in relation to the work of the partnership; the need to address the fear of crime; and managing community expectations with decreasing resources.	1. Better utilise SHP Face the Public Event and consider Community Safety Summit  2. Improve use of technology when communicating with the public.  3. Improve understanding of the Impact of Welfare Reform using local partnership intelligence and data			
<b>3.</b> Partnership Support and Collaboration – reduction in funding and impact on services such as drug and alcohol services; organisations making decisions in isolation and the need to improve and strengthen collective planning aligning organizational priorities; the need rethink presentation of strategic assessment; the need to safeguard money coming in from PCC.	1. Produce memorandum of understanding/working protocol/ agreement/SHP pledge around strategic objectives  2. Improve SHP induction process  3. Reinvigorate Strategic Assessment and how it is presented  4. Performance monitor local projects/services funded by the PCC  5. SHP links to CCG drugs and alcohol agenda – ie co-ordinate what is commissioned and develop stronger links			



#### **4. SECTION 17 OF THE CRIME AND DISORDER ACT 1988 CONSIDERATIONS**

- 4.1 The proposed actions will assist the Safer Hartlepool to dispense of its statutory obligations in ensuring a co-ordinated approach to tackling crime and disorder, substance misuse and reoffending.

#### **5. EQUALITY AND DIVERSITY**

- 5.1 The proposed actions will enhance the Partnerships ability to address equality and diversity issues including the adverse impact of welfare reform.

#### **6. RECOMMENDATIONS**

- 6.1.1 The Safer Hartlepool Executive are asked to consider, discuss, and agree those priorities for action that it considers necessary to ensure the Partnership continues to perform successfully in the future.

#### **7. REASONS FOR RECOMMENDATIONS**

- 7.1 The Safer Hartlepool Partnership Development Day provided the opportunity for members to reflect on its key strengths and weaknesses, and to identify and discuss any key threats and opportunities in the face of a changing environment.
- 7.2 Positive action taken around the three key priority areas will assist the Partnership to continue the successes of previous years in relation to reducing crime and disorder, tackling substance misuse, and reducing reoffending.

#### **8. CONTACT OFFICER**

Denise Ogden  
Director of Regeneration and Neighbourhoods  
Hartlepool Borough Council  
Regeneration and Neighbourhoods  
Civic Centre  
Level 3  
Email: [Denise.Ogden@Hartlepool.gov.uk](mailto:Denise.Ogden@Hartlepool.gov.uk)  
Tel: 01429 523300

Clare Clark  
Neighbourhood Manager (South and Central)  
Hartlepool Borough Council  
Regeneration and Neighbourhoods  
173 York Road  
Email: [Clare.Clark@hartlepool.gov.uk](mailto:Clare.Clark@hartlepool.gov.uk)  
Tel: 01429 855560

## **SHP Development Day - Note of SWOT discussion**

### **STRENGTHS**

Good Relationships between agencies which allows robust difficult conversations to take place

Hartlepool is a small compact area which assists with relationship building across agencies

The Officers around the table are aware of issues across the wider community safety spectrum – not just their specialist areas

There is improving alignment between Partnership objectives and the objectives that sit within individual organisations plans

Strong links with political leadership

Strong engagement at a local level via Neighbourhood Management / Neighbourhood Policing

Broad range of local intelligence available – including upcoming Household Survey.

Face the Public Event – very successful, can build on this

The Sub Groups of the Partnership have delivered and are successful.

Willingness to innovate, can evidence many initiatives that partnership have developed.

The Partnership does prevent crime and makes a difference

Through the new governance arrangements it is now recognised that the SHP is part of the core business of the LA.

Success of joint commissioning.

### **WEAKNESSES**

High turnover of members from some organisations

Could still be more effective in aligning priorities across partners

Not getting messages across in relation to reduced crime and various initiatives – hence perception levels of crime higher than Tees Valley.

The way in which the Strategic Assessment is presented. Collective planning could be improved. (need to reinvigorate SA process)

The process for developing the SA isn't conducive for partner buy in.

Some complacency around priority setting (they're always the same)

Do we spend enough time reviewing priorities

We don't necessarily link into commissioning opportunities from other areas (and vice versa)

Collective planning could be better

There is a lack of interrogation from SHP to sub groups. Needs to be more challenge

Less resources spread to thinly.

The broader impact on partners isn't always considered when individual organisations make changes.

Lack of integration with other Boards (although improving)

Induction of new members could improve

Lack of public understanding of what we do.

Coordination of impact of Welfare Reform

## **THREATS**

Changes in Probation Services – outsourcing of offender management.

Engaging with potential new provider – still very unclear how new arrangements will work

Impact of continuing funding reductions.

Pace of change is rapid – very difficult to deal with

Impact of Welfare Reform – partner income streams reduced. Sustainability of housing stock in some areas uncertain.

Widening social polarisation

Increase of EDL and BNP activity

Increased community tensions

Organisations making decisions in isolation without considering impact on partners.

Change to DLA – people moving into work who maybe shouldn't be. Need to consider safety implications and develop policies to address.

Fear of crime will increase

PCC – potential changes to how we deliver services

Reduction of Public Health funding 2015/16. Potential impact on drug and alcohol services

Managing levels of expectation with limited resources

## **OPPORTUNITIES**

Need to seriously consider collective bid for probation services contract. Needs progressing quickly

Develop protocols / formalise relationships to strengthen how agencies work together.

Link in to HBC Advice and Guidance evaluation

Utilisation of resources / knowledge / intelligence of front line staff.

Better utilise Face the Public in getting messages across. SHP Summit? (Develop you said we did)

Undertake mapping exercise utilising Household Survey and what we know of those impacted by Welfare Reform

Access to PCC funding – need to develop good practice and evidence base to safeguard the money coming into Hartlepool via PCC

Develop a memorandum of understanding between organisations based around strategic objectives. (Working agreement / SHP Plege)

Links into CCG and Drugs and Alcohol agenda – coordinate what is commissioned and develop stronger links

Have a focus on one 'big issue' and do it really well

Utilise technology when communicating with public – Social media, dedicated generic SHP email)



## SAFER HARTLEPOOL PARTNERSHIP

5<sup>th</sup> JULY 2013



**Report of:** Neighbourhood Manager (Community Safety)

**Subject:** SAFER HARTLEPOOL PARTNERSHIP  
PERFORMANCE

---

### 1. PURPOSE OF REPORT

- 1.1 To provide an overview of Safer Hartlepool Partnership performance for 2012/13.

### 2. BACKGROUND INFORMATION

- 2.1 The refreshed Community Safety Plan 2011-14 published in 2012 outlined the Safer Hartlepool Partnership strategic objectives, annual priorities and key performance indicators 2012/13.
- 2.2 The report attached (**Appendix A**) provides an overview of Safer Hartlepool Partnership performance during 2012/13, comparing end of year performance to the previous reporting year 2011/12, where appropriate.

### 3. RECOMMENDATIONS

- 3.1 The Safer Hartlepool Partnership note and comment on partnership performance in 2012/13.

### 4. REASONS FOR RECOMMENDATIONS

- 4.1 The Safer Hartlepool Partnership is responsible for overseeing the successful delivery of the Community Safety Plan 2011-14.

### 5. EQUALITY AND DIVERSITY CONSIDERATIONS

- 5.1 There are no equality or diversity implications.

**6. SECTION 17 OF THE CRIME AND DISORDER ACT 1998  
CONSIDERATIONS**

6.1 There are no Section 17 implications.

**7. BACKGROUND PAPERS**

7.1 The following background papers were used in the preparation of this report:-

Safer Hartlepool Partnership – Community Safety Plan 2011-14  
([http://www.saferhartlepool.co.uk/downloads/file/38/safer\\_hartlepool\\_partnership\\_plan-year\\_2-2011-2014](http://www.saferhartlepool.co.uk/downloads/file/38/safer_hartlepool_partnership_plan-year_2-2011-2014))

**8. CONTACT OFFICER**

Clare Clark, Neighbourhood Manager (Community Safety)  
Hartlepool Borough Council  
(01429) 855560  
[clare.clark@hartlepool.gov.uk](mailto:clare.clark@hartlepool.gov.uk)



**Safer Hartlepool Partnership**  
**Performance Report**  
**2012-2013**

The contents of this document is for the sole use of reducing crime and disorder in the borough of Hartlepool, no part of this document may be copied or amended without prior consultation with the Safer Hartlepool Partnership Co-ordinator .

## SAFER HARTLEPOOL PARTNERSHIP PERFORMANCE INDICATORS 2012-2013

### Reduce crime and repeat victimisation

Indicator Name	Baseline (2011/12)	Local Directional Target (2012/13)	End of Year Performance (2012/13)	Actual Difference	% Difference	Target Status
All recorded crime	7,189	Reduce	6,492	- 697	- 9.7%	✓
Domestic Burglaries	363	Reduce	297	- 66	- 18.2%	✓
Vehicle Crime	454	Reduce	375	- 79	- 17.4%	✓
Shoplifting	766	Reduce	774	8	1.0%	⚠
Valuable Metal Theft	526	Reduce	207	- 319	- 60.6%	✓
Local Violence	1,157	Reduce	1,111	- 46	- 3.9%	✓
Repeat Incidents of Domestic Violence - MARAC	26%	Reduce	22%	- 7	24.1%	✓

### Create confident, cohesive and safe communities

Indicator Name	Baseline (2011/12)	Local Directional Target (2012/13)	End of Year Performance (2012/13)	Actual Difference	% Difference	Target Status
Perceptions of Anti-social Behaviour	Viewpoint 32 May '10 25%	Reduce in comparison to baseline year	Local Household Survey planned 2013	-	-	-
Perceptions of drunk or rowdy behaviour as a problem	Viewpoint 32 May '10 25%	Maintain baseline year perception levels	Local Household Survey planned 2013	-	-	-
Anti-social Behaviour Incidents reported to the Police	8779	Reduce	6913	- 1966	- 22.4%	✓
Deliberate fires	379	Reduce	212	- 166	- 43.5%	✓
Criminal damage to dwellings	568	Reduce	491	77	13.5%	✓
Hate Incidents	98	Increase	101	3	3%	✓

### Reduce the harm caused by drugs and alcohol

Indicator Name	Baseline (2011/12)	Local Directional Target (2012/13)	End of Year Performance (2012/13)	Actual Difference	% Difference	Target Status
Number of drug users recorded as being in effective treatment.	813	Increase	801* (Provisional Data)	-12	1.4%	⚠
Perceptions of people using or dealing drugs in the community.	Viewpoint 32 May '10 33%	Reduce	Local Household Survey planned 2013	-	-	-
Reduction in the rate of alcohol related harm hospital admissions <sup>1</sup>	2, 995	Reduce	2, 213 (Apr - Dec 12)	Awaiting data from Public Health England		✓
Number of young people found in possession of alcohol	395	Reduce	222	174	43.5%	✓

### Reduce offending and re-offending

Indicator Name	Baseline (2011/12)	Local Directional Target (2012/13)	End of Year Performance (2012/13)	Actual Difference	% Difference	Target Status
Re-offending rate of young offenders	1.21 (62 offences)	Reduce	1.13 (46 offences)	- 48 offences	- 52.1% offences	✓
First time entrants to the Youth Justice System	68	Reduce	60	- 8	- 11.7%	✓
Re-offending rate of Prolific and Priority Offenders (PPO's) <sup>2</sup>	3.2 (141 Convictions)	Reduce	1.8 (17 Convictions)	- 68 convictions	- 48.2% convictions	✓



## Recorded crime in Hartlepool 2012-13

### Publicly Reported Crime (Victim Based Crime)

Crime Category/Type	2012-13	2011-12	Change	% Change
<b>Violence against the person</b>	<b>1256</b>	<b>1314</b>	<b>-58</b>	<b>-4.4%</b>
Violence with injury	738	820	-82	-10.0%
Violence without injury	518	494	24	4.9%
<b>Sexual Offences</b>	<b>76</b>	<b>98</b>	<b>-22</b>	<b>-22.4%</b>
Rape	39	35	4	11.4%
Other Sexual Offences	37	63	-26	-41.3%
<b>Acquisitive Crime</b>	<b>2948</b>	<b>3299</b>	<b>-351</b>	<b>-10.6%</b>
Domestic Burglary	297	363	-66	-18.2%
Other Burglary	381	320	61	19.1%
Robbery - Personal	26	30	-4	-13.3%
Robbery - Business	10	3	7	233.3%
Vehicle Crime (Inc Inter.)	410	495	-85	-17.2%
Shoplifting	774	766	8	1.0%
Other Acquisitive	1050	1322	-272	-20.6%
<b>Criminal Damage &amp; Arson</b>	<b>1381</b>	<b>1575</b>	<b>-194</b>	<b>-12.3%</b>
<b>Total</b>	<b>5661</b>	<b>6286</b>	<b>-625</b>	<b>-9.9%</b>

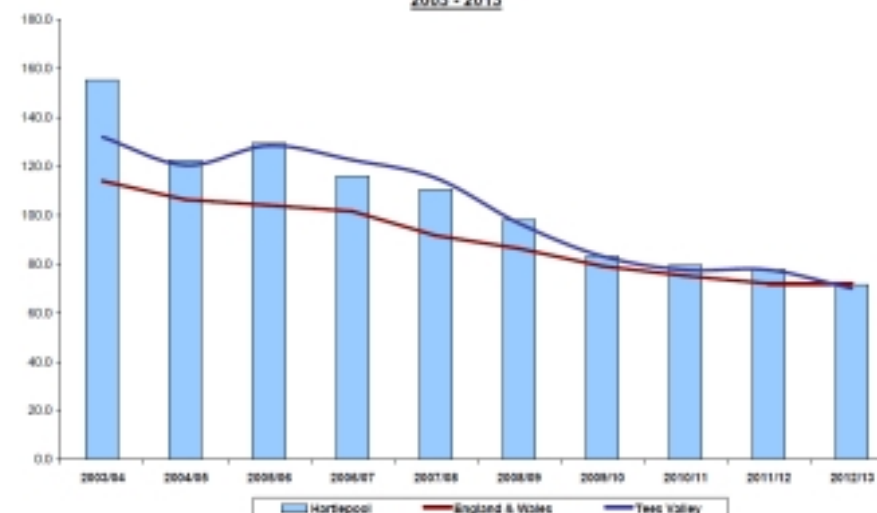
### Police Generated Offences (Non -Victim Based Crime)

Crime Category/Type	2012-13	2011-12	Change	% Change
<b>Public Disorder</b>	<b>212</b>	<b>230</b>	<b>-18</b>	<b>-7.8%</b>
<b>Drug Offences</b>	<b>425</b>	<b>454</b>	<b>-29</b>	<b>-6.4%</b>
Trafficking of drugs	89	108	-19	-17.6%
Possession/Use of drugs	336	346	-10	-2.9%
<b>Crime Prevented/Disrupted</b>	<b>102</b>	<b>143</b>	<b>-41</b>	<b>-28.7%</b>
<b>Other State based/Non Victim</b>	<b>33</b>	<b>21</b>	<b>12</b>	<b>57.1%</b>
<b>Total Police Generated Offences</b>	<b>772</b>	<b>848</b>	<b>-76</b>	<b>-9.0%</b>

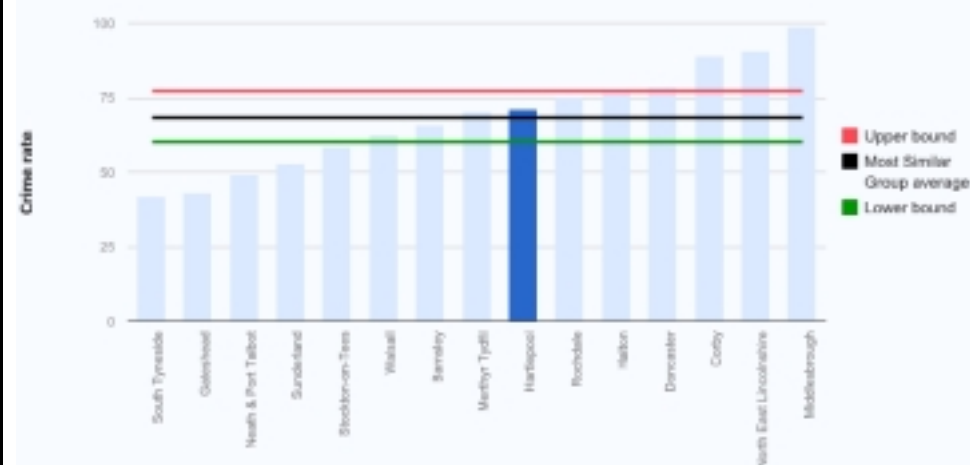
<b>Fraud &amp; Forgery</b>	<b>59</b>	<b>55</b>	<b>4</b>	<b>7.3%</b>
----------------------------	-----------	-----------	----------	-------------

<b>TOTAL RECORDED CRIME IN HARTLEPOOL</b>	<b>6492</b>	<b>7189</b>	<b>-697</b>	<b>-9.7%</b>
---	-------------	-------------	-------------	--------------

Crime Rates per 1,000 population  
2003 - 2013



Hartlepool - Crimes per 1,000 residents - All crime



# Performance in comparison to Local Peers 2012-13

## Publicly Reported Crime (Victim Based Crime) 2012-13

Crime Category/Type	HARTLEPOOL		REDCAR		MIDDLESBROUGH		STOCKTON		CLEVELAND	
	Crime	Per 1,000 pop	Crime	Per 1,000 pop	Crime	Per 1,000 pop	Crime	Per 1,000 pop	Crime	Per 1,000 pop
<b>Violence against the person</b>	<b>1256</b>	<b>13.8</b>	<b>1151</b>	<b>8.6</b>	<b>2367</b>	<b>17.4</b>	<b>1828</b>	<b>9.7</b>	<b>6602</b>	<b>12.0</b>
Violence with injury	738	8.1	726	5.4	1378	10.1	1079	5.7	3921	7.1
Violence without injury	518	5.7	425	3.2	989	7.3	749	4.0	2681	4.9
<b>Sexual Offences</b>	<b>76</b>	<b>0.8</b>	<b>92</b>	<b>0.7</b>	<b>175</b>	<b>1.3</b>	<b>213</b>	<b>1.1</b>	<b>556</b>	<b>1.0</b>
Rape	39	0.4	27	0.2	51	0.4	58	0.3	175	0.3
Other Sexual Offences	37	0.4	65	0.5	124	0.9	155	0.8	381	0.7
<b>Acquisitive Crime</b>	<b>2948</b>	<b>32.4</b>	<b>3946</b>	<b>29.5</b>	<b>7381</b>	<b>54.2</b>	<b>5812</b>	<b>30.9</b>	<b>20087</b>	<b>36.6</b>
Domestic Burglary	297	7.3	361	6.1	950	16.6	529	6.7	2137	9.0
Other Burglary	381	4.2	625	4.7	724	5.3	744	4.0	2474	4.5
Robbery – Personal	26	0.3	25	0.2	130	1.0	64	0.3	245	0.4
Robbery - Business	10	0.1	7	0.1	10	0.1	9	0.0	36	0.1
Vehicle Crime (Inc Inter.)	410	4.5	663	5.0	1370	10.1	805	4.3	3248	5.9
Shoplifting	774	8.5	876	6.5	1910	14.0	1441	7.7	5001	9.1
Other Acquisitive	1050	11.5	1389	10.4	2287	16.8	2220	11.8	6946	12.6
<b>Criminal Damage &amp; Arson</b>	<b>1381</b>	<b>15.2</b>	<b>1955</b>	<b>14.6</b>	<b>2318</b>	<b>17.0</b>	<b>2245</b>	<b>11.9</b>	<b>7899</b>	<b>14.4</b>
<b>Total</b>	<b>5661</b>	<b>62.1</b>	<b>7144</b>	<b>53.3</b>	<b>12241</b>	<b>89.9</b>	<b>10098</b>	<b>53.7</b>	<b>35144</b>	<b>64.0</b>

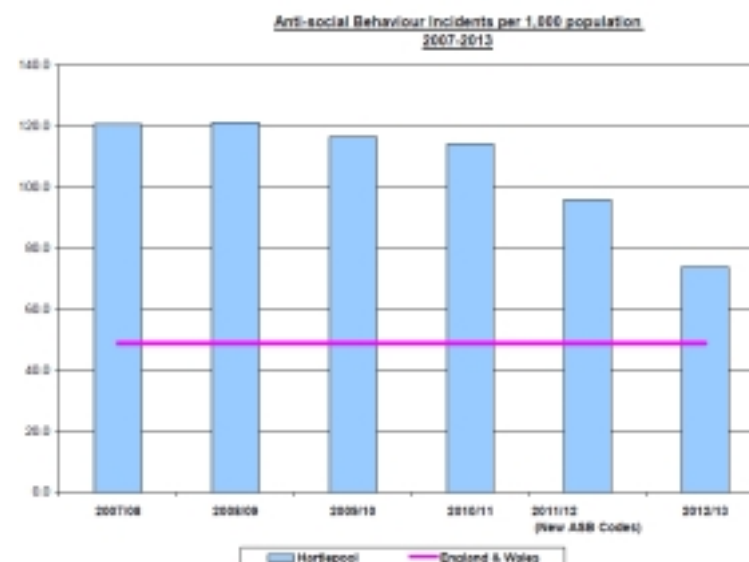
## Police Generated Offences (Non -Victim Based Crime)

Crime Category/Type	HARTLEPOOL		REDCAR		MIDDLESBROUGH		STOCKTON		CLEVELAND	
	Crime	Per 1,000 pop	Crime	Per 1,000 pop	Crime	Per 1,000 pop	Crime	Per 1,000 pop	Crime	Per 1,000 pop
<b>Public Disorder</b>	<b>212</b>	<b>2.3</b>	<b>233</b>	<b>1.7</b>	<b>531</b>	<b>3.9</b>	<b>343</b>	<b>1.8</b>	<b>1319</b>	<b>2.4</b>
<b>Drug Offences</b>	<b>425</b>	<b>4.7</b>	<b>347</b>	<b>2.6</b>	<b>825</b>	<b>6.1</b>	<b>508</b>	<b>2.7</b>	<b>2105</b>	<b>3.8</b>
Trafficking of drugs	89	1.0	69	0.5	116	0.9	92	0.5	366	0.7
Possession/Use of drugs	336	3.7	278	2.1	709	5.2	416	2.2	1739	3.2
<b>Crime Prevented/Disrupted</b>	<b>102</b>	<b>1.1</b>	<b>98</b>	<b>0.7</b>	<b>171</b>	<b>1.3</b>	<b>119</b>	<b>0.6</b>	<b>490</b>	<b>0.9</b>
<b>Other State based/Non Victim</b>	<b>33</b>	<b>0.4</b>	<b>26</b>	<b>0.2</b>	<b>62</b>	<b>0.5</b>	<b>47</b>	<b>0.3</b>	<b>168</b>	<b>0.3</b>
<b>Total Police Generated Offences</b>	<b>772</b>	<b>8.5</b>	<b>704</b>	<b>5.3</b>	<b>1589</b>	<b>11.7</b>	<b>1017</b>	<b>5.4</b>	<b>4082</b>	<b>7.4</b>
<b>Fraud &amp; Forgery</b>	<b>59</b>	<b>0.6</b>	<b>53</b>	<b>0.4</b>	<b>85</b>	<b>0.6</b>	<b>100</b>	<b>0.5</b>	<b>297</b>	<b>0.5</b>
<b>TOTAL RECORDED CRIME</b>	<b>6492</b>	<b>71.3</b>	<b>7901</b>	<b>59.0</b>	<b>13915</b>	<b>102.2</b>	<b>11215</b>	<b>59.7</b>	<b>39523</b>	<b>72.0</b>

## Anti-Social Behaviour in Hartlepool 2012-13

### Anti-social Behaviour in Hartlepool

Incident Category	2012-13	2011-12	Change	% Change
AS21 - Personal	2258	2901	-643	-22.2%
AS22 - Nuisance	4340	5505	-1165	-21.2%
AS23 - Environmental	215	373	-158	-42.4%
<b>Total</b>	<b>6813</b>	<b>8779</b>	<b>-1966</b>	<b>-22.4%</b>



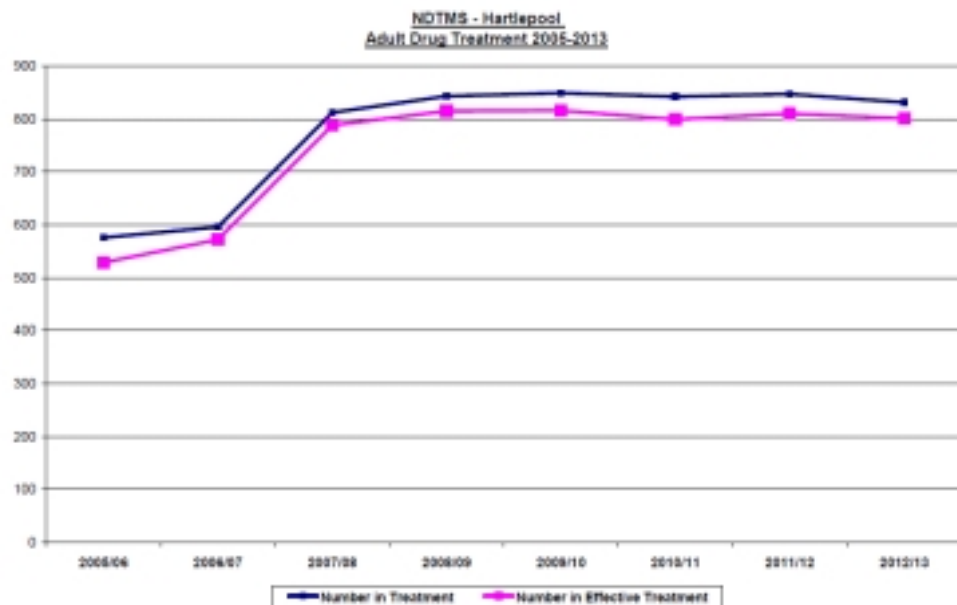
## Performance in comparison to Local Peers 2012-13

Incident Category	HARTLEPOOL		REDCAR		MIDDLESBROUGH		STOCKTON		CLEVELAND	
	ASB	Per 1,000 pop	ASB	Per 1,000 pop	ASB	Per 1,000 pop	ASB	Per 1,000 pop	ASB	Per 1,000 pop
AS21 - Personal	2258	24.8	2876	21.5	3839	28.1	4017	21.4	13086	23.8
AS22 - Nuisance	4340	47.6	5720	42.7	7435	54.4	7776	41.4	25457	46.4
AS23 - Environmental	215	2.4	324	2.4	366	2.7	329	1.8	1243	2.3
<b>Total</b>	<b>6813</b>	<b>74.8</b>	<b>8920</b>	<b>66.6</b>	<b>11640</b>	<b>85.1</b>	<b>12122</b>	<b>64.5</b>	<b>39786</b>	<b>72.5</b>

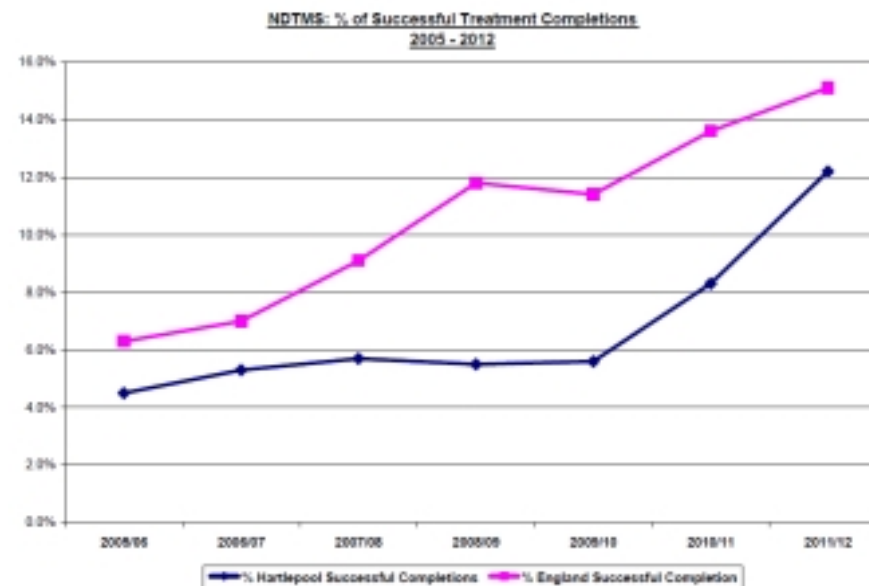
## Local Public Confidence & Perceptions 2012-13

Local Confidence & Perceptions 2012/13	Hartlepool	Redcar	Middlesbrough	Stockton	Cleveland
% of people who agree that the Police and council are dealing with the crime and anti-social behaviour issues that matter in their area	78.7%	76.2%	75.3%	74.3%	75.8%
% of people who's quality of life is affected by fear of crime and anti-social behaviour	15.0%	14.8%	17.2%	10.2%	13.8%
% of people who perceive high levels of anti-social behaviour in their local area	3.2%	3.0%	5.2%	3.5%	3.7%
% of people who perceive high levels of drunk or rowdy behaviour in public places in their local area	12.0%	9.5%	15.2%	8.2%	10.8%
% of people who perceive high levels of drug use or dealing in their local area	12.8%	11.1%	15.3%	9.3%	11.8%

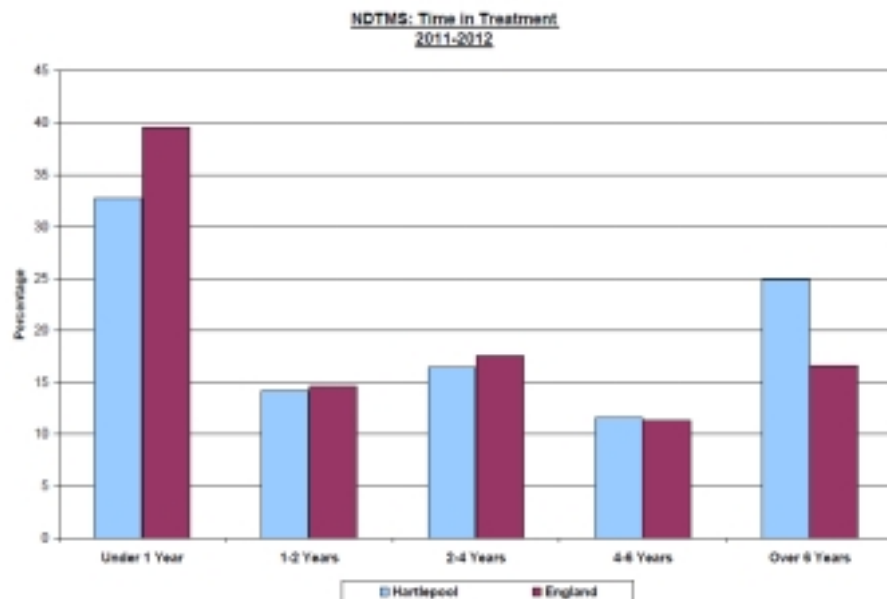
### Adult Drug Treatment 2005 – 2013\* (Provisional Data 2012/13)



### % of Successful Drug Treatment Completions 2005-2012



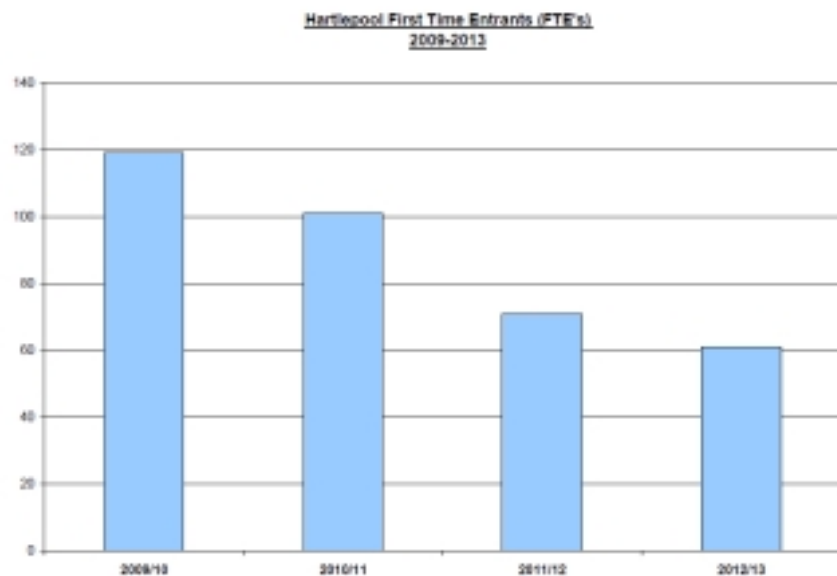
### Time in Drug Treatment 2011-12



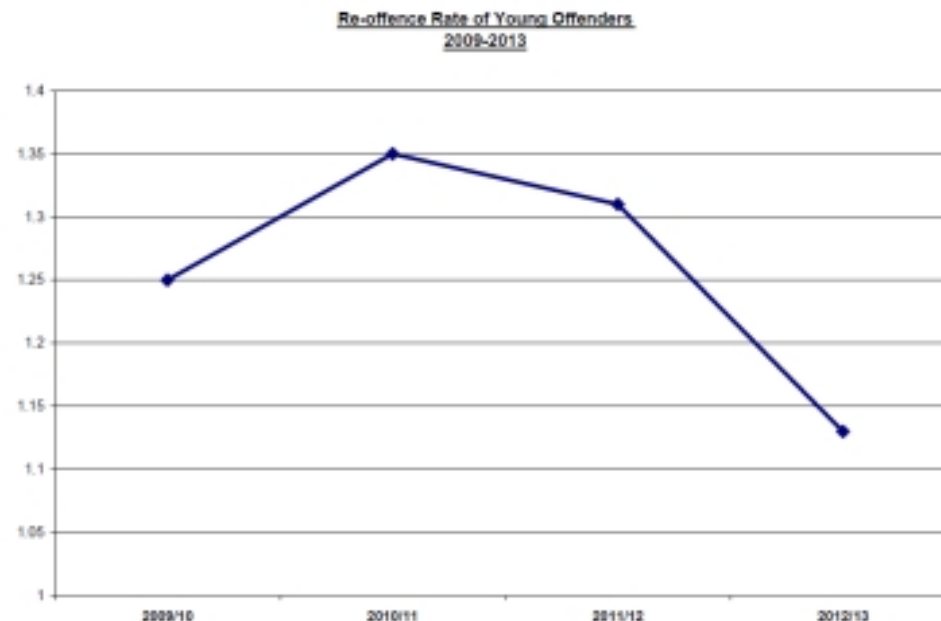
### Alcohol Related Hospital Admissions 2008-2013 (Quarter 3)



## First-Time Entrants to the Criminal Justice System



## Re-offence Rate of Young Offenders 2009-2013



## Re-offending Rate of PPO's & HCC's

Accumulative	Baselines	Apr 12 - Jun 12	Jul 12 - Sept 12	Oct 12 - Dec 12	Jan 13 - Mar 13	Outcome
Prolific & Priority Offenders (44 Offenders)	141 convictions 3.2	19 convictions 0.4	33 convictions 0.8	55 convictions 1.3	77 convictions 1.8	Offending has reduced by 40% in comparison to the baseline
High Crime Causers (33 Offenders)	256 convictions 7.8	69 convictions 2.1	110 convictions 3.3	152 convictions 4.6	191 convictions 5.8	Offending has reduced by 21% in comparison to the baseline

## Local Adult Re-offending Rate 2012

